

30,000/SF

# OFFICE/WAREHOUSE FOR LEASE

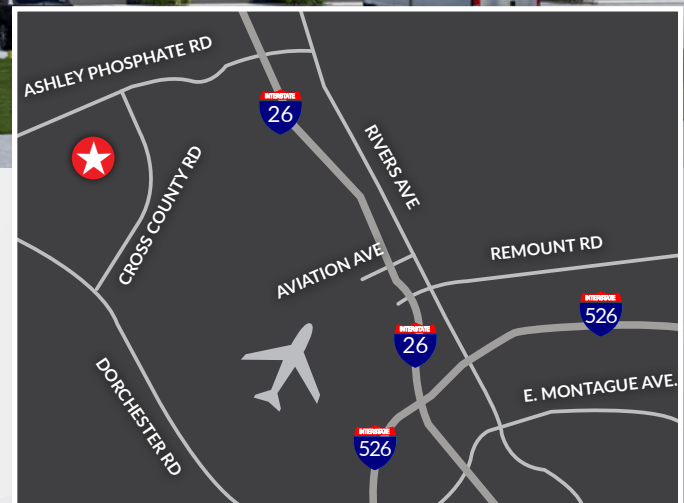
7216 Cross Park Drive - N. Charleston SC



## CROSS COUNTY COMMERCE PARK

**Conveniently located in the geographic center of the Charleston region.**

Cross County Commerce Park is a master planned Industrial Park located in the center of North Charleston South Carolina. The new 30,000 SF Office/Warehouse will be state of the art with Dock High doors, Drive In doors and an ample outside storage laydown yard. With a central location to the entire Charleston market this building will service a variety of companies.



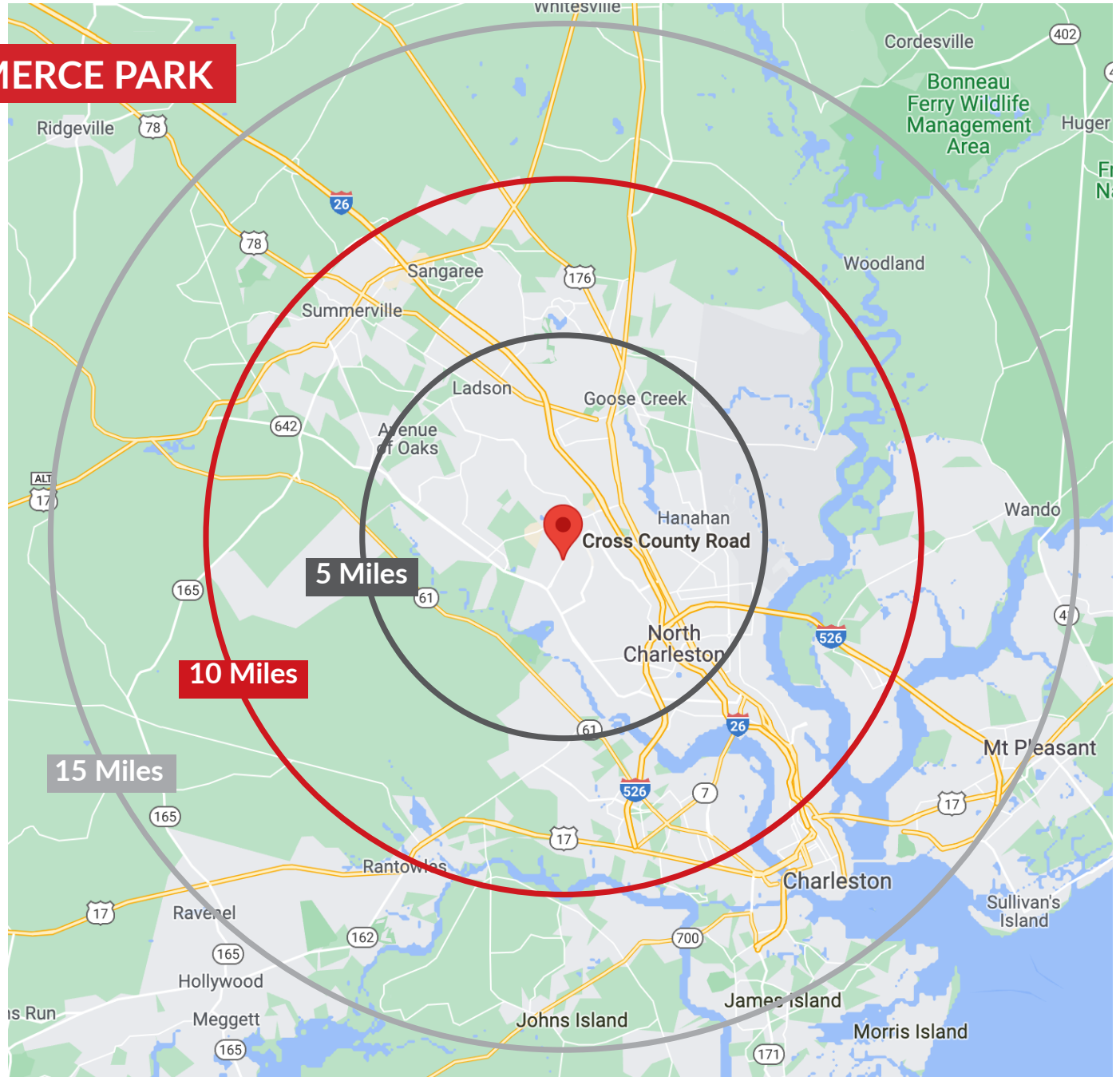
# CROSS COUNTY COMMERCE PARK

## 30,000/SF OFFICE/WAREHOUSE FOR LEASE

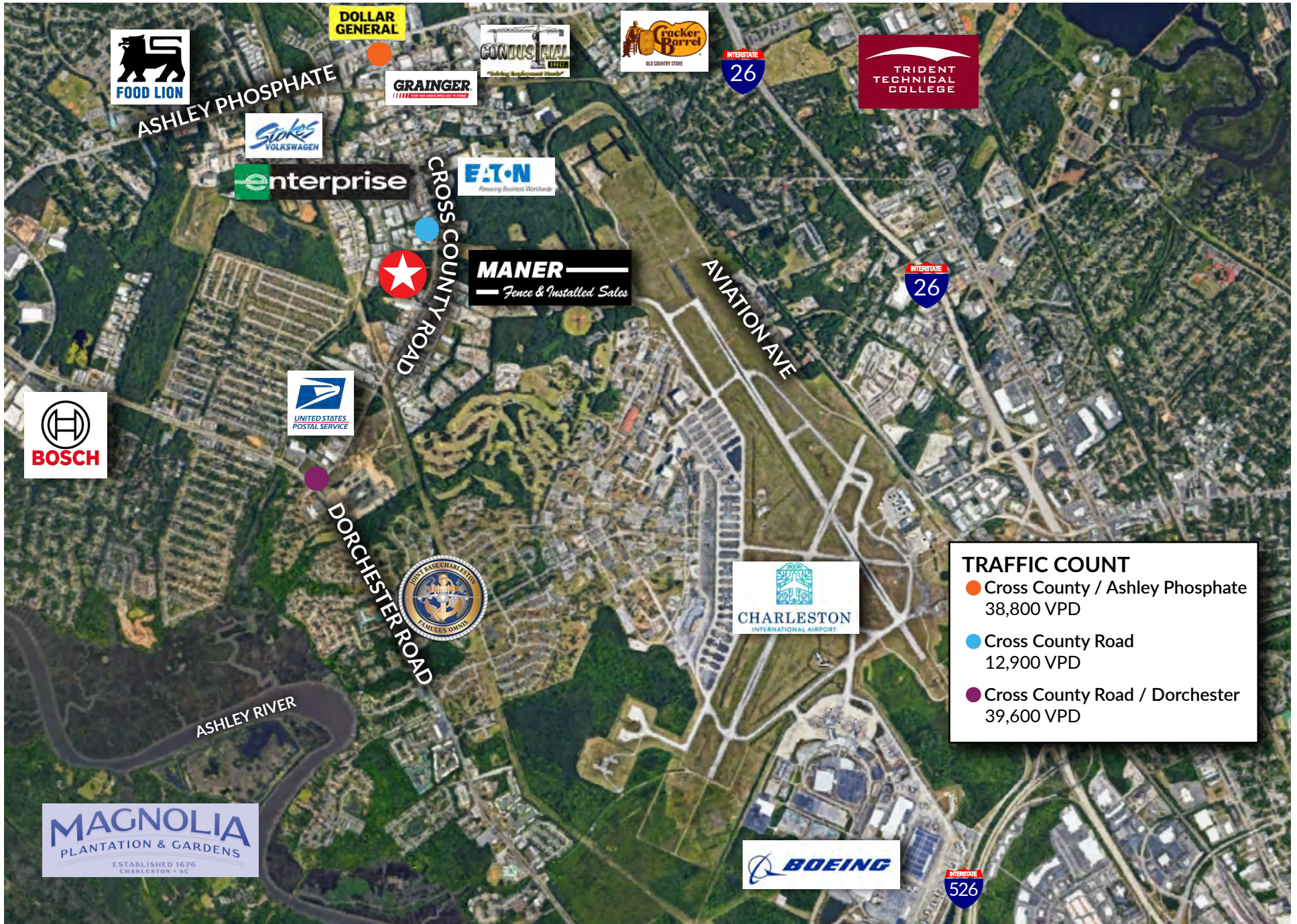
- SIZE: 30,000 SF  
ACREAGE: 2.8 Acres  
DOORS: Dock High Doors and Drive-In Doors  
PARKING: 10 + Spaces  
OUTSIDE STORAGE: Ample room for a fenced yard, .68 Acre  
OFFICE: To suit

### LOCATION

Direct access from Cross Park Drive and conveniently located in the center of the greater Charleston MSA, in between Ashley Phosphate Road and Dorchester Road with close proximity to I-26.







TRAFFIC COUNT	
●	Cross County / Ashley Phosphate 38,800 VPD
●	Cross County Road 12,900 VPD
●	Cross County Road / Dorchester 39,600 VPD



7216 CROSS PARK DRIVE  
NORTH CHARLESTON SC  
[www.landmark-enterprises.com](http://www.landmark-enterprises.com)



**30,000/SF**  
**OFFICE/WAREHOUSE**  
**FOR LEASE**

7216 Cross Park Drive - N. Charleston SC

**CROSS COUNTY COMMERCE PARK**

[www.landmark-enterprises.com](http://www.landmark-enterprises.com)



**Bart J. Langlois, CCIM**  
Broker  
843.884.8166 ext. 109



**Glenn Goodwin**  
Broker  
843.884.8166 ext. 103



**LANDMARK**  
ENTERPRISES  
COMMERCIAL REAL ESTATE

\*We obtained the information above from sources we believe to be reliable. However, we have not verified its accuracy and make no guarantee, warranty or representation about it. It is submitted subject to the possibility of errors, omissions, change of price, rental or other conditions, prior sale, lease or financing, or withdrawal without notice. We include projections, opinions, assumptions or estimates for example only, and they may not represent current or future performance of the property. You and your tax and legal advisors should conduct your own investigation of the property and transaction.