



## STRATHERN BUSINESS CENTER

15904-15922 STRATHERN STREET, 7933 GLORA AVENUE

15901-15923 BLYTHE STREET, VAN NUYS CA 91406

### Building Highlights

- Fenced business park with newly remodeled small units For Lease.
- Automated security fencing with punch code access.
- Exterior security lighting.
- Tenant monument signage.
- Fully insulated and air conditioned units.
- 12 ft Warehouse Clear Height.
- 8' x 8' Roll-up Door Per Unit.
- Single Phase & 3 Phase Power Available.
- LA-M2 Zoning.

### INDUSTRIAL UNIT SIZES

### OFFICE SUITE SIZES

± 775 SF

± 400 SF

± 825 SF

± 500 SF

± 1,200 SF

± 600 SF

± 1,650 SF

-

#### Eric Seidenglanz

Associate

818. 815. 2426

eseidenglanz@naicapital.com

Cal DRE Lic # 01975684

#### Chad D. Gahr, SIOR

Executive Vice President

818. 383. 5581

cgahr@naicapital.com

Cal DRE Lic # 01230414

#### David Young

Executive Vice President

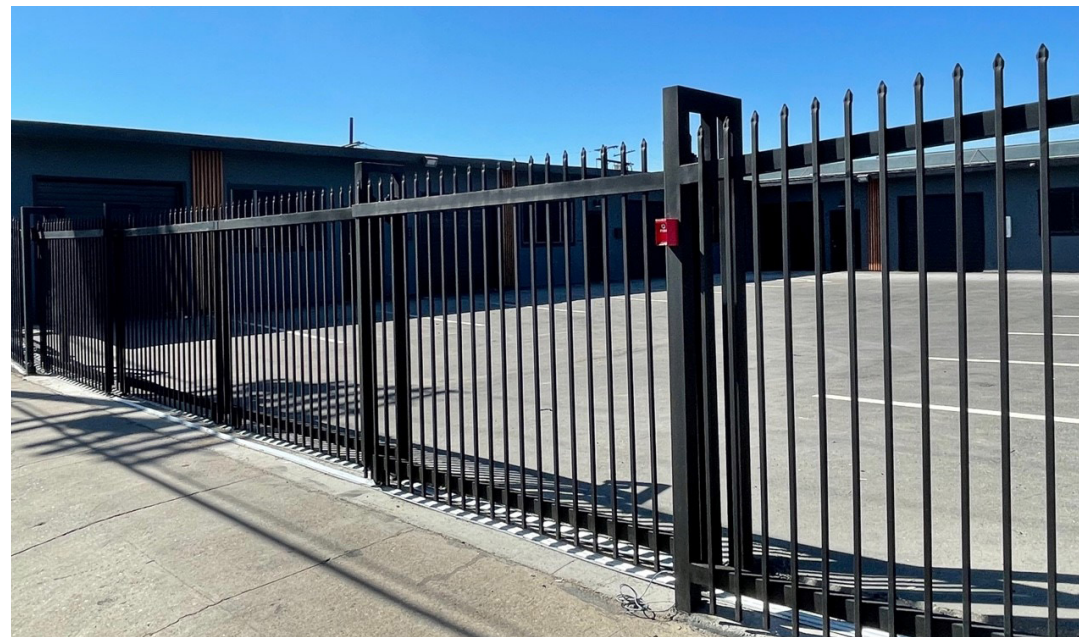
818. 422. 8658

dyoung@naicapital.com

Cal DRE Lic # 00914504

## 15922 STRATHERN STREET

- ± 750 SF      \$1,613.00 Industrial Gross
- ± 825 SF      \$1,774.00 Industrial Gross
- ± 875 SF      \$1,881.00 Industrial Gross
- ± 1,600 SF    \$3,440.00 Industrial Gross
- ± 2,375 SF    \$5,110.00 Industrial Gross



## 7933 GLORIA AVENUE

± 825 SF      \$1,774.00 Industrial Gross

± 850 SF      \$1,828.00 Industrial Gross

± 1,250 SF      \$2,688.00 Industrial Gross



**15901-15923 BLYTHE STREET**

± 775 SF      \$1,667.00 Industrial Gross

± 825 SF      \$1,774.00 Industrial Gross

± 1,650 SF      \$3,548.00 Industrial Gross



## 15904 STRATHERN STREET

± 400 SF      \$1,000.00 Industrial Gross

± 500 SF      \$1,250.00 Industrial Gross

± 600 SF      \$1,500.00 Industrial Gross





# SMALL INDUSTRIAL & OFFICE UNITS FOR LEASE





**Eric Seidenglanz**

Associate

818. 815. 2426

eseidenglanz@naicapital.com

Cal DRE Lic # 01975684

**Chad D. Gahr, SIOR**

Executive Vice President

818. 383. 5581

cgahr@naicapital.com

Cal DRE Lic # 01230414

**David Young**

Executive Vice President

818. 422. 8658

dyoung@naicapital.com

Cal DRE Lic # 00914504



**Eric Seidenglanz**

Associate

818. 815. 2426

[eseidenglanz@naicapital.com](mailto:eseidenglanz@naicapital.com)

Cal DRE Lic # 01975684

**Chad D. Gahr, SIOR**

Executive Vice President

818. 383. 5581

[cgahr@naicapital.com](mailto:cgahr@naicapital.com)

Cal DRE Lic # 01230414

**David Young**

Executive Vice President

818. 422. 8658

[dyoung@naicapital.com](mailto:dyoung@naicapital.com)

Cal DRE Lic # 00914504



**Eric Seidenglanz**

Associate

818. 815. 2426

[eseidenglanz@naicapital.com](mailto:eseidenglanz@naicapital.com)

Cal DRE Lic # 01975684

**Chad D. Gahr, SIOR**

Executive Vice President

818. 383. 5581

[cgahr@naicapital.com](mailto:cgahr@naicapital.com)

Cal DRE Lic # 01230414

**David Young**

Executive Vice President

818. 422. 8658

[dyoung@naicapital.com](mailto:dyoung@naicapital.com)

Cal DRE Lic # 00914504