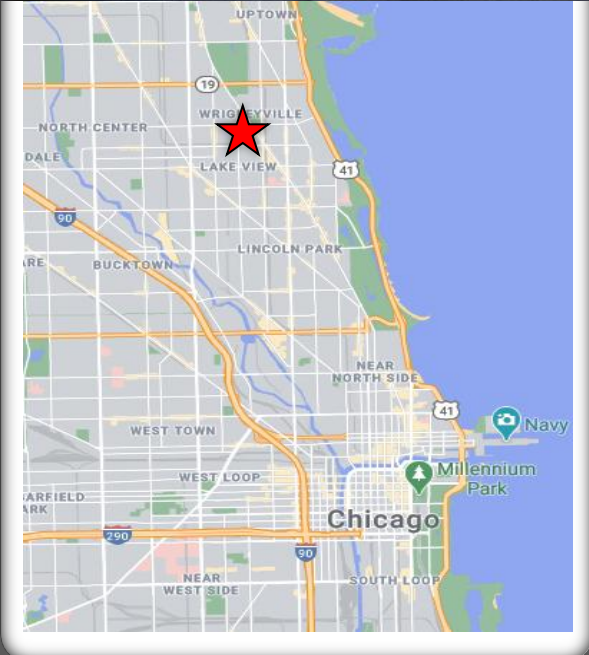
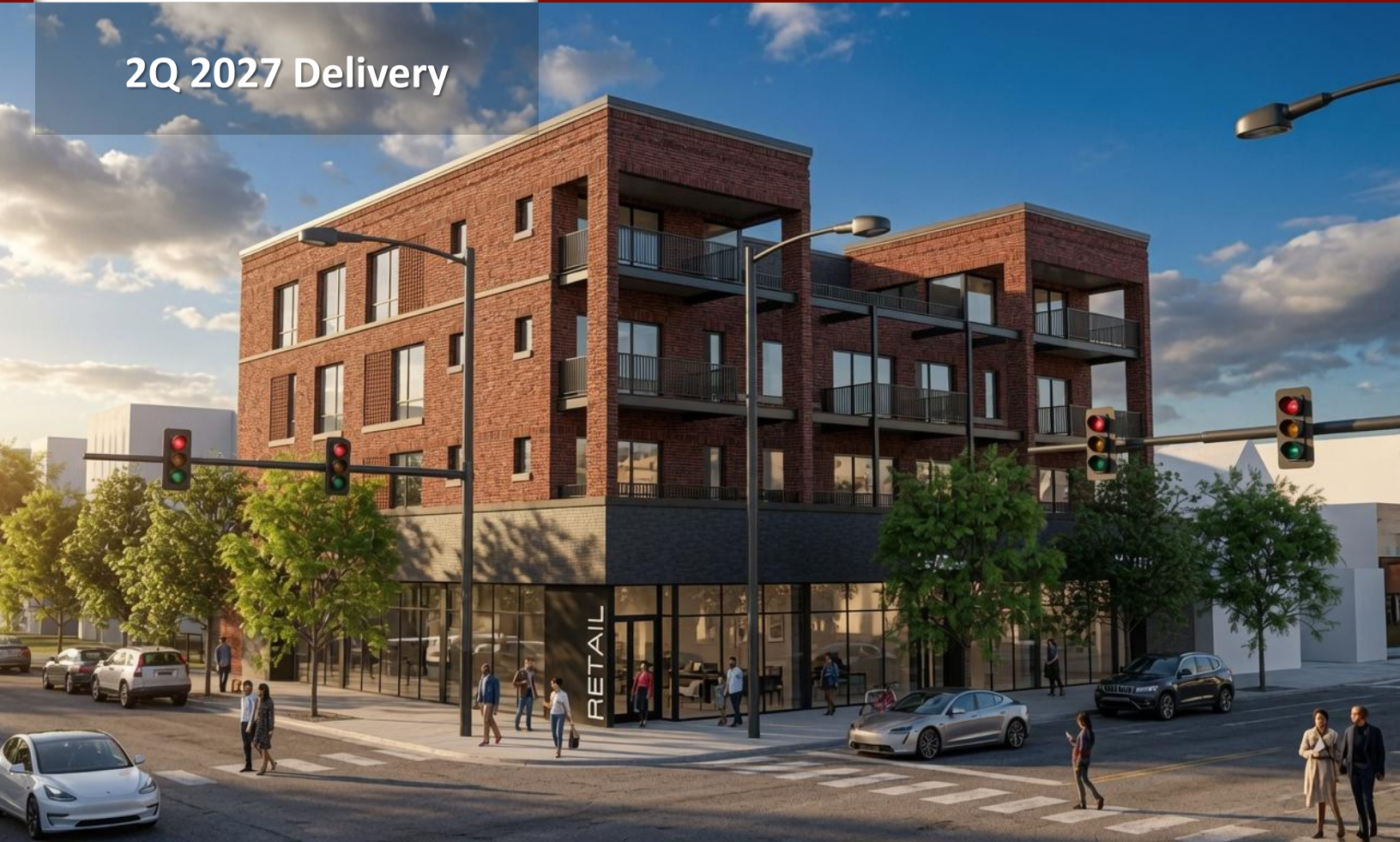


**3600 N. Southport
(NWC Southport & Addison)
Chicago, Illinois**

FOR LEASE

6,250 SF RETAIL SPACE ON SOUTHPORT

2Q 2027 Delivery



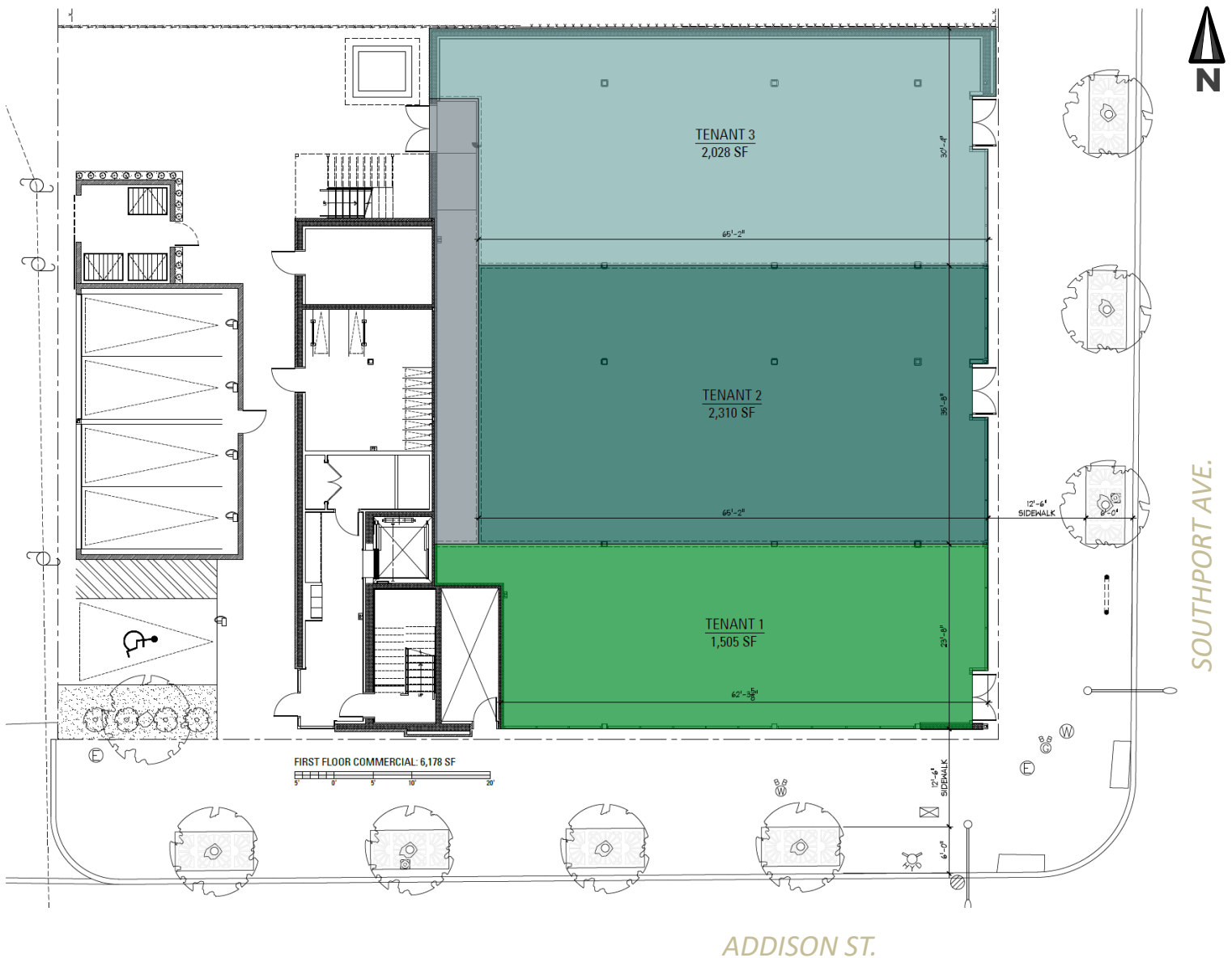
- New construction on Southport, one of Chicago’s best retail corridors.
- 6,250 sf commercial/retail space at NW corner of Southport & Addison
- Outstanding area co-tenancy including Anthropologie, Abercrombie, Gap, JCrew, Athleta, Starbucks, Vuori, Arc Teryx, Evereve, Kendra Scott, Free People, Hotel Chocolat, Sephora and many more boutiques, restaurants and bars line this great retail street
- Three blocks west of Wrigley Field and Brown Line CTA station

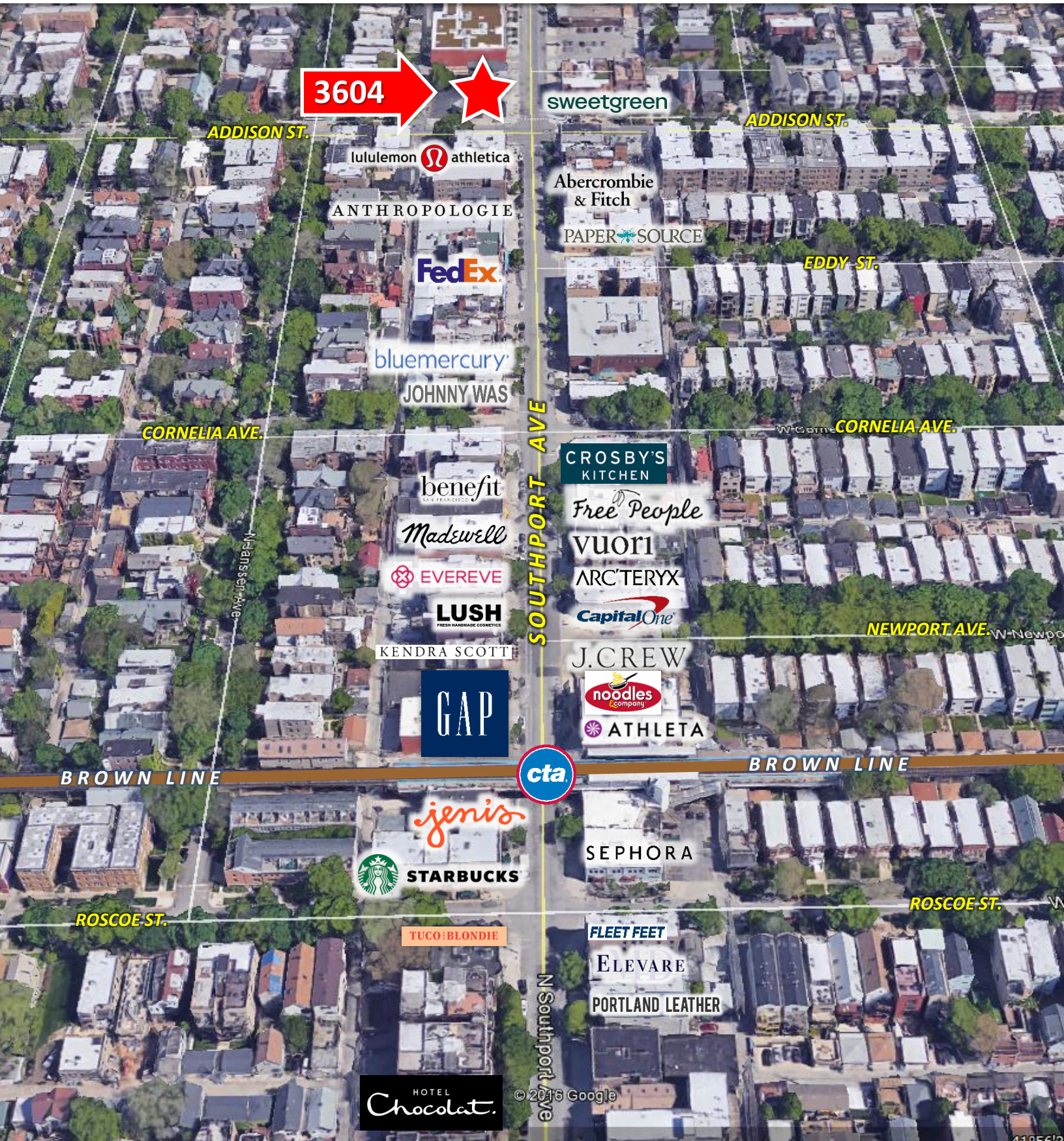
DEMOGRAPHICS	1 MILE	2 MILE	3 MILE
TOTAL POPULATION	81,334	266,109	477,774
TOTAL HOUSEHOLDS	40,244	138,316	237,567
AVERAGE HH INCOME	\$145,010	\$127,430	\$125,199



3604 N Southport, Chicago, Illinois

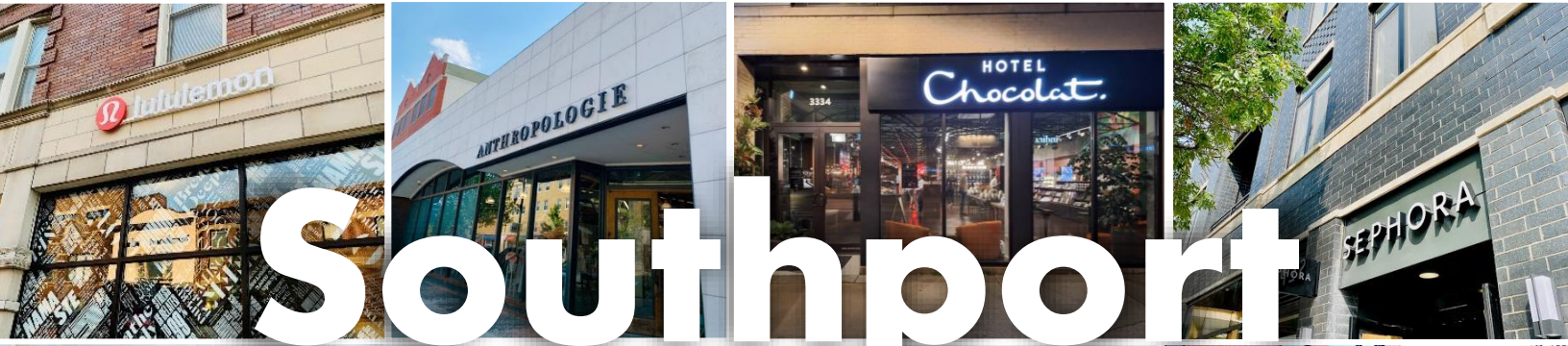
Up to 6,250 SF of new Retail Space







3604 N Southport, Chicago, Illinois



JOE PADORR 312.316.2300 jpadorr@seneca-re.com

SENECA
REAL ESTATE GROUP