

PARKWAY CENTER



NOW AVAILABLE FOR LEASE

4897

**West Lake Park Boulevard
West Valley City, UT**

Property Features

- Class A Building and Finishes
- 7 / 1,000 Parking Ratio
- Efficient Layout

Lease Rate: \$12.00 NNN

- Easy Access to Bangerter Highway and Highway 201

Space Available for Lease

- 9,518 RSF Available
- Divisible to 3,000 SF
- Prime 1st floor space



Parkway Center



First Floor Lobby

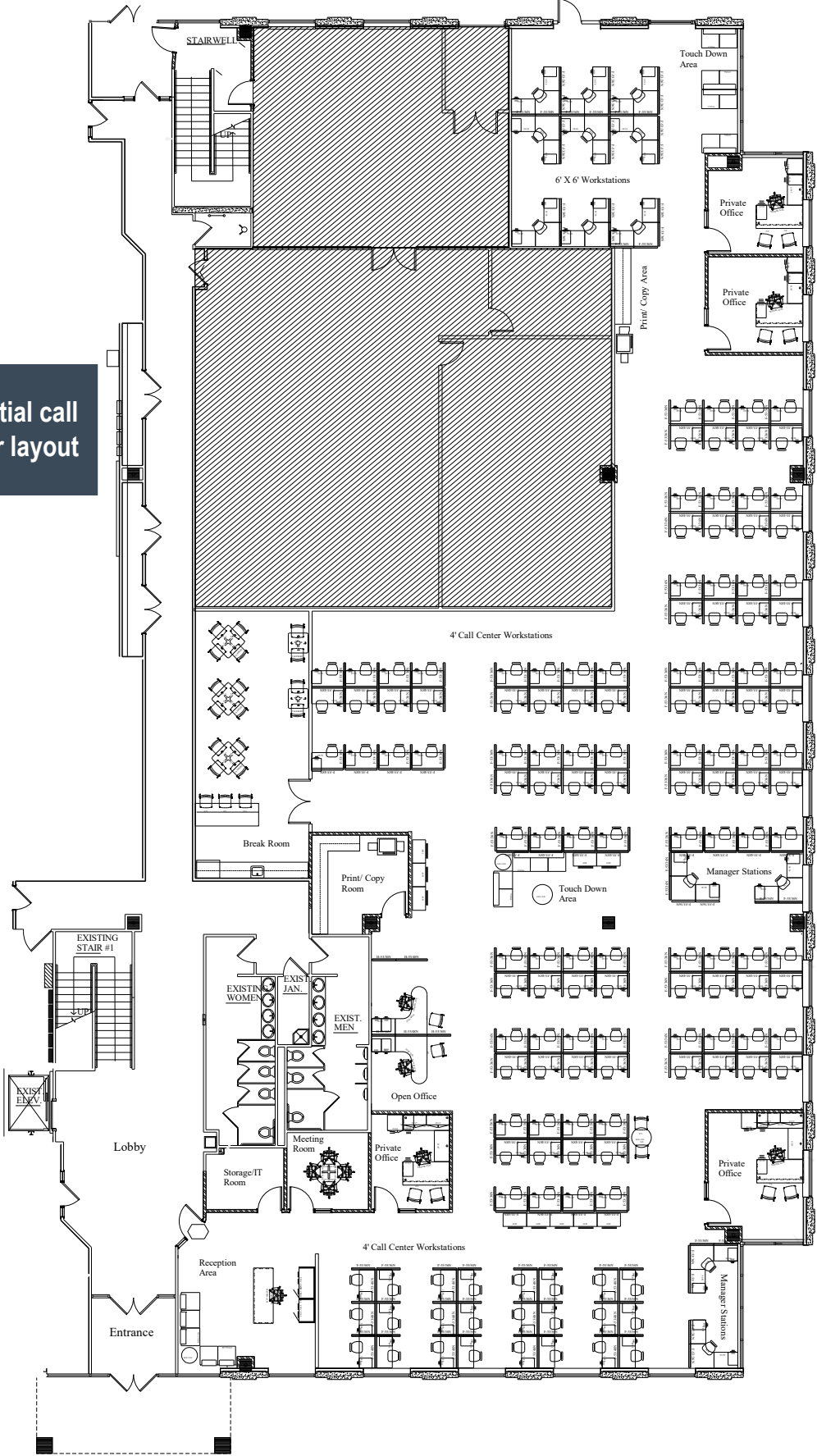


Class A Building with abundant parking

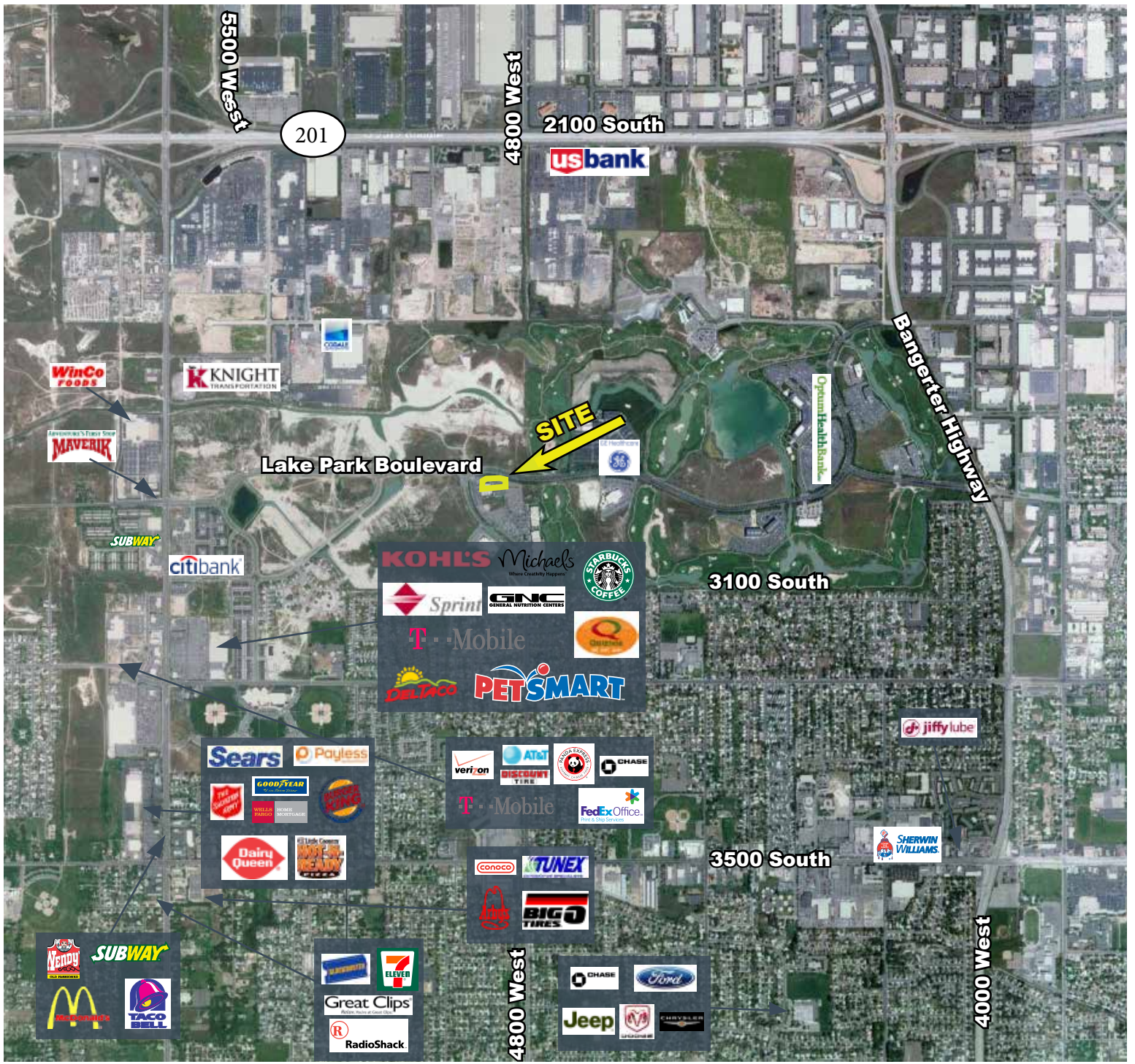


Floor Plan
9,581 sf
Available

Potential call center layout



Amenities Map



Marketed by:



Jim Balderson
 jim.balderson@am.jll.com
 +1 801 456 9510