

# SOUTH SOUND



MEDICAL PORTFOLIO

## Bridgeport Medical Center

**FOR LEASE**

HIGH QUALITY OUTPATIENT MEDICAL SPACE



7308 Bridgeport Way W, Lakewood, WA 98499

**HIGH QUALITY SPACE AVAILABLE**

Healthpeak

DOC  
LISTED  
NYSE

**CBRE**

# PROPERTY HIGHLIGHTS

1,173 RSF AVAILABLE

---

- Built-Out Existing Clinic Space
- High-Quality Medical Space with Excellent Exposure
- Synergetic Tenant Mix with Existing surgery, Imaging and Orthopedic Services
- Abundant On-Site Free Parking
- Professional Property Management



## AVAILABILITIES

---

- Suite 204: 1,173 RSF

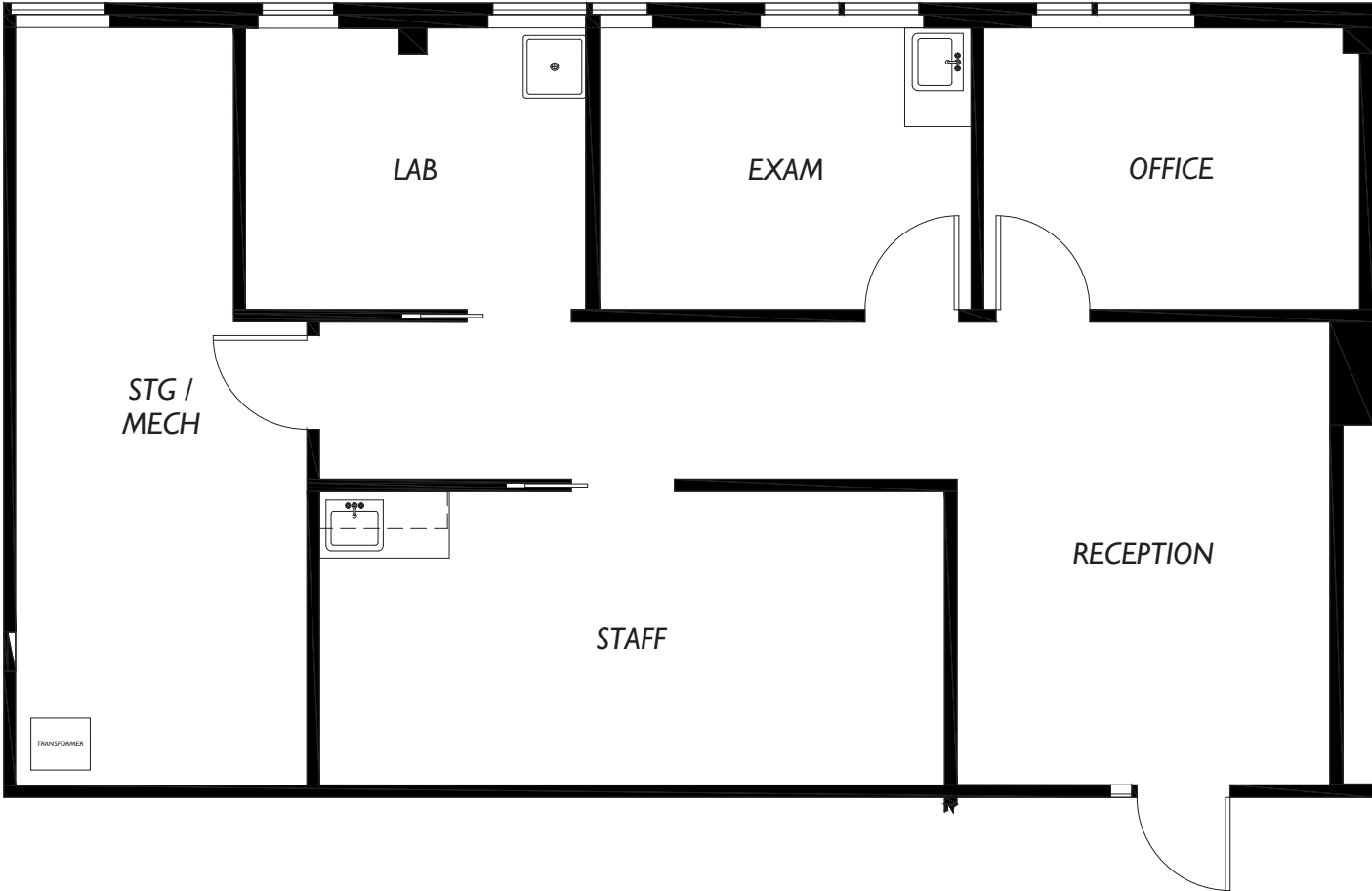


# SUITE 204

1,173 RSF



7308 Bridgeport Way W, Lakewood, WA 98499



7308 Bridgeport Way W, Lakewood, WA 98499

# SOUTH SOUND



MEDICAL PORTFOLIO

Bridgeport Medical Center



**Marcus Yamamoto**

Senior Vice President

+1 206 292 6062

[marcus.yamamoto@cbre.com](mailto:marcus.yamamoto@cbre.com)

**Katie Smith**

Senior Associate

+1 206 292 6012

[katie.m.smith@cbre.com](mailto:katie.m.smith@cbre.com)

**Diane di Furia**

Senior Transaction Manager

+1 206 386 3063

[diane.difuria@cbre.com](mailto:diane.difuria@cbre.com)

Healthpeak

DOC  
LISTED  
NYSE

**CBRE**

© 2024 CBRE, Inc. All rights reserved. This information has been obtained from sources believed reliable, but has not been verified for accuracy or completeness. You should conduct a careful, independent investigation of the property and verify all information. Any reliance on this information is solely at your own risk. CBRE and the CBRE logo are service marks of CBRE, Inc. All other marks displayed on this document are the property of their respective owners, and the use of such logos does not imply any affiliation with or endorsement of CBRE. Photos herein are the property of their respective owners. Use of these images without the express written consent of the owner is prohibited. PMStudio\_March2025