

# 177

## PRINCE STREET SOHO, NYC

Between Thompson & Sullivan Streets

RESTAURANT FOR LEASE

### APPROXIMATE SIZE

Ground Floor: 2,000 SF  
Lower Level: 2,000 SF

### ASKING RENT

~~\$45,000/Month~~ Reduced  
\$40,000/Month

### POSSESSION

Arranged

### TERM

10-15 Years

### FRONTAGE

20 FT

### COMMENTS

- All uses considered
- Turn-key restaurant in the heart of SoHo
- Fully vented with an immaculate kitchen in place
- Open layout with no column intrusions
- No key-money
- Heavy foot traffic and strong co-tenancy in Prime Soho

### NEIGHBORS

- Blue Ribbon Sushi • Raoul's • The Dutch • Little Prince • Olive's • Milady's • Revelie • Sushi Ikumi • Fellini • Café Yaya • Omen Azen • Mori Sushi • Lola Taverna • Sugarfish • Altesi Downtown • Bandone

### TRANSPORTATION



### JAMES FAMULARO

President  
646.658.7373  
jfamularo@meridiancapital.com

### JORDAN LANGER

Senior Associate  
212.468.5977  
jlanger@meridiancapital.com



**MERIDIAN**  
RETAIL LEASING

All information supplied is from sources deemed reliable and is furnished subject to errors, omissions, modifications, removal of the listing from sale or lease, and to any listing conditions, including the rates and manner of payment of commissions for particular offerings imposed by Meridian Capital Group. This information may include estimates and projections prepared by Meridian Capital Group with respect to future events, and these future events may or may not actually occur. Such estimates and projections reflect various assumptions concerning anticipated results. While Meridian Capital Group believes these assumptions are reasonable, there can be no assurance that any of these estimates and projections will be correct. Therefore, actual results may vary materially from these estimates and projections. Any square footage dimensions set forth are approximate.

# 177 PRINCE STREET

SOHO, NYC | Between Thompson and Sullivan Streets

## RESTAURANT FOR LEASE



INTERIOR

### JAMES FAMULARO

President  
646.658.7373  
jfamularo@meridiancapital.com

### JORDAN LANGER

Senior Associate  
212.468.5977  
jlanger@meridiancapital.com



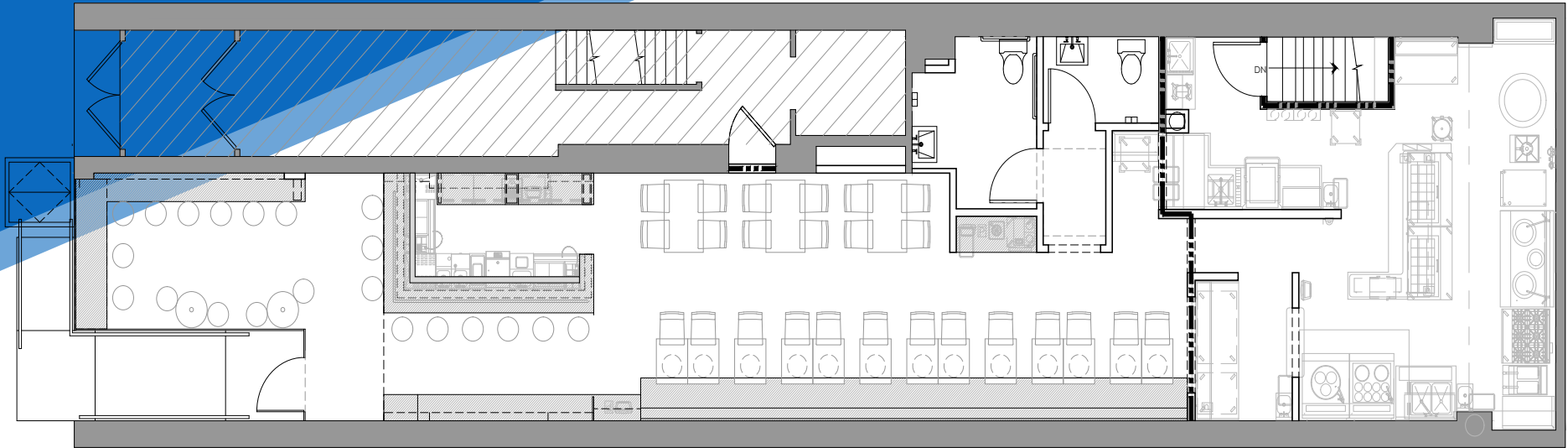
**MERIDIAN**  
RETAIL LEASING

All information supplied is from sources deemed reliable and is furnished subject to errors, omissions, modifications, removal of the listing from sale or lease, and to any listing conditions, including the rates and manner of payment of commissions for particular offerings imposed by Meridian Capital Group. This information may include estimates and projections prepared by Meridian Capital Group with respect to future events, and these future events may or may not actually occur. Such estimates and projections reflect various assumptions concerning anticipated results. While Meridian Capital Group believes these assumptions are reasonable, there can be no assurance that any of these estimates and projections will be correct. Therefore, actual results may vary materially from these estimates and projections. Any square footage dimensions set forth are approximate.

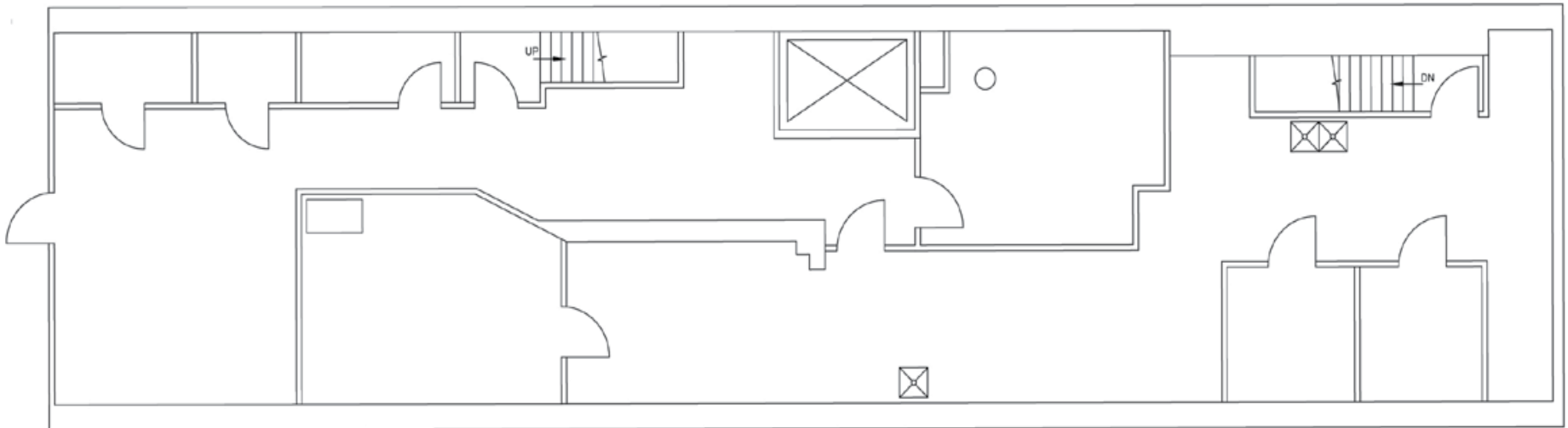
# 177 PRINCE STREET

SOHO, NYC | Between Thompson and Sullivan Streets

RESTAURANT FOR LEASE



GROUND FLOOR



LOWER LEVEL

FLOOR PLANS

### JAMES FAMULARO

President  
646.658.7373  
jfamularo@meridiancapital.com

### JORDAN LANGER

Senior Associate  
212.468.5977  
jlanger@meridiancapital.com



**MERIDIAN**  
RETAIL LEASING

All information supplied is from sources deemed reliable and is furnished subject to errors, omissions, modifications, removal of the listing from sale or lease, and to any listing conditions, including the rates and manner of payment of commissions for particular offerings imposed by Meridian Capital Group. This information may include estimates and projections prepared by Meridian Capital Group with respect to future events, and these future events may or may not actually occur. Such estimates and projections reflect various assumptions concerning anticipated results. While Meridian Capital Group believes these assumptions are reasonable, there can be no assurance that any of these estimates and projections will be correct. Therefore, actual results may vary materially from these estimates and projections. Any square footage dimensions set forth are approximate.

