



11574 GONDOLA ST.
SHARONVILLE, OHIO 45241

AVAILABLE FOR LEASE

Rod MacEachen
(513) 675-5764
Rod@SqFtCommercial.com

Roddy MacEachen, SIOR
(513) 739-3985
Roddy@SqFtCommercial.com

Jared Wagoner, SIOR
(812) 890-1768
Jared@SqFtCommercial.com

Amy Castaneda
(503) 310-9768
Amy@SqFtCommercial.com

Sarah Kern
(513) 426-4864
Sarah@SqFtCommercial.com

© 2026 SqFt Commercial LLC. All rights reserved. No warranty or representation, express or implied, is made to the accuracy or completeness of the information contained herein, and same is submitted subject to errors, omissions, change of price, rental or other conditions, withdrawal without notice, and to any special listing conditions imposed by the property owner(s). As applicable, we make no representation as to the condition of the property (or properties) in question. This information has been obtained from sources believed reliable, but has not been verified for accuracy or completeness. You should conduct a careful, independent investigation of the property and verify all information. Any reliance on this information is solely at your own risk. SqFt Commercial and the SqFt Commercial logo are service marks of SqFt Commercial, Inc. All other marks displayed on this document are the property of their respective owners. Photos herein are the property of their respective owners. Use of these images without the express written consent of the owner is prohibited.

11574 GONDOLA ST.

SHARONVILLE, OHIO 45241

INFO@SQFTCOMMERCIAL.COM
(513) 843-1600
SQFTCOMMERCIAL.COM



PROPERTY HIGHLIGHTS

8,000 SqFt (50'x160')

- Located in Sharonville at the intersection of I-75/I-275
- Fully air-conditioned facility
- Two (2) pylon signs available with I-75 and E. Kemper frontage
- Building has both dock and drive-in loading
- Building is clearspan
- Lease Rate: \$11.95/SqFt NNN + \$2.34/SF OpEx/CAM
- Building available for immediate occupancy

 [CLICK HERE FOR AERIAL VIDEO](#)

 [CLICK HERE FOR THE 360° TOUR](#)

PROPERTY DETAILS

Total SqFt:	8,000 (50'x160')
Warehouse SqFt:	6,364
Office SqFt:	1,636
Acreage:	0.503
Clear Height:	13'
Year Built/Renovated:	1970/2026
Type Construction:	Concrete Block
Lighting:	LED throughout
Column Spacing:	Clear span
Dock door:	One (1): 10' x 12' with edge of dock leveler
Drive-in door:	One (1): 10' x 12'
Sprinkler:	None
Electrical Service:	120/208V/3phase/~300 amps
HVAC:	100% HVAC throughout
Roof:	Rubber membrane
Truck court:	Concrete/asphalt
Parking Lot:	Asphalt - 25 spaces
Restrooms:	Two (2)

11574 GONDOLA ST.

SHARONVILLE, OHIO 45241

INFO@SQFTCOMMERCIAL.COM
(513) 843-1600
SQFTCOMMERCIAL.COM



FLOOR PLAN



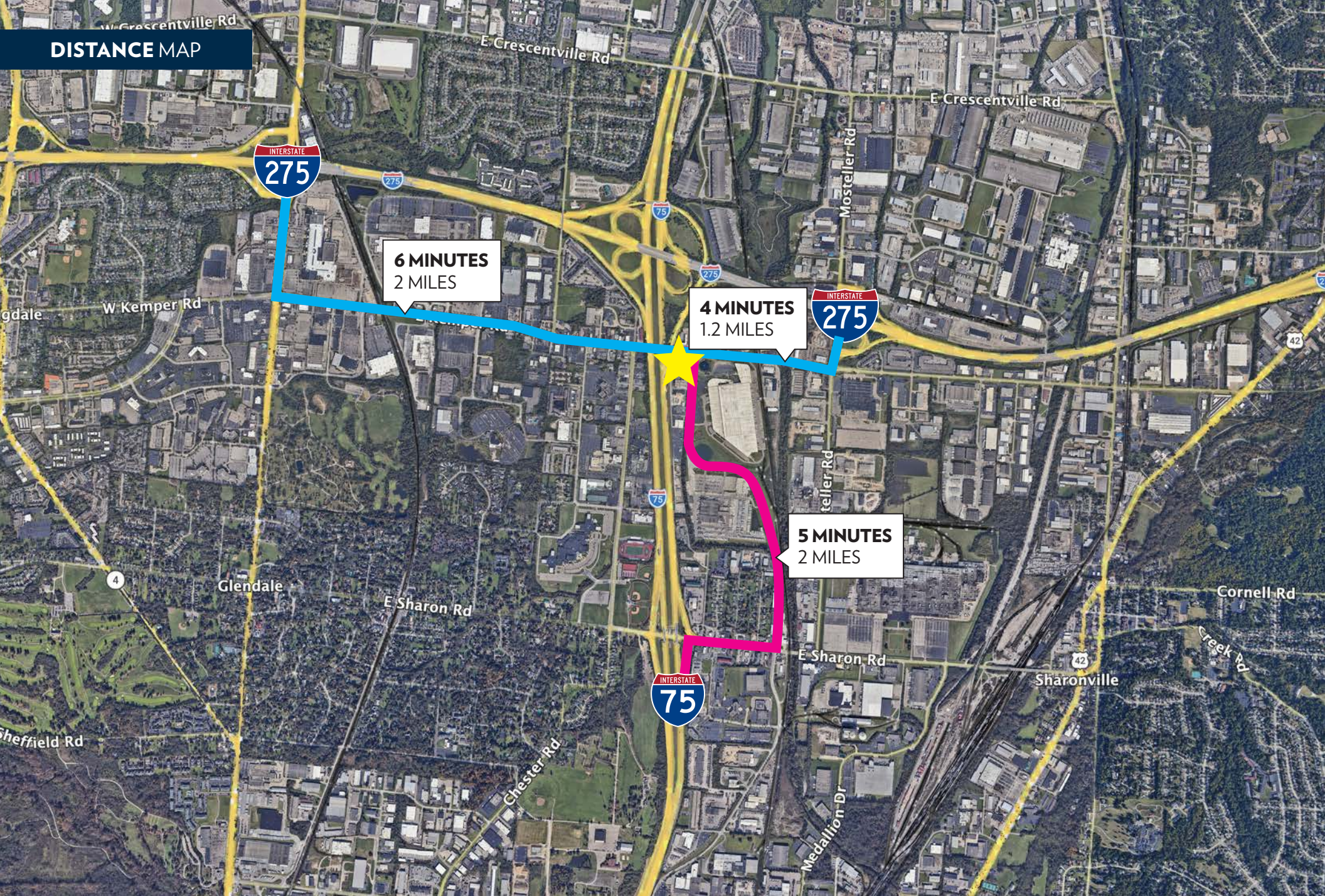
11574 GONDOLA ST.

SHARONVILLE, OHIO 45241

INFO@SQFTCOMMERCIAL.COM
(513) 843-1600
SQFTCOMMERCIAL.COM



DISTANCE MAP



11574 GONDOLA ST.

SHARONVILLE, OHIO 45241

INFO@SQFTCOMMERCIAL.COM
(513) 843-1600
SQFTCOMMERCIAL.COM



PARCEL OUTLINE



11574 GONDOLA ST.

SHARONVILLE, OHIO 45241

INFO@SQFTCOMMERCIAL.COM
(513) 843-1600
SQFTCOMMERCIAL.COM



11574 GONDOLA ST.

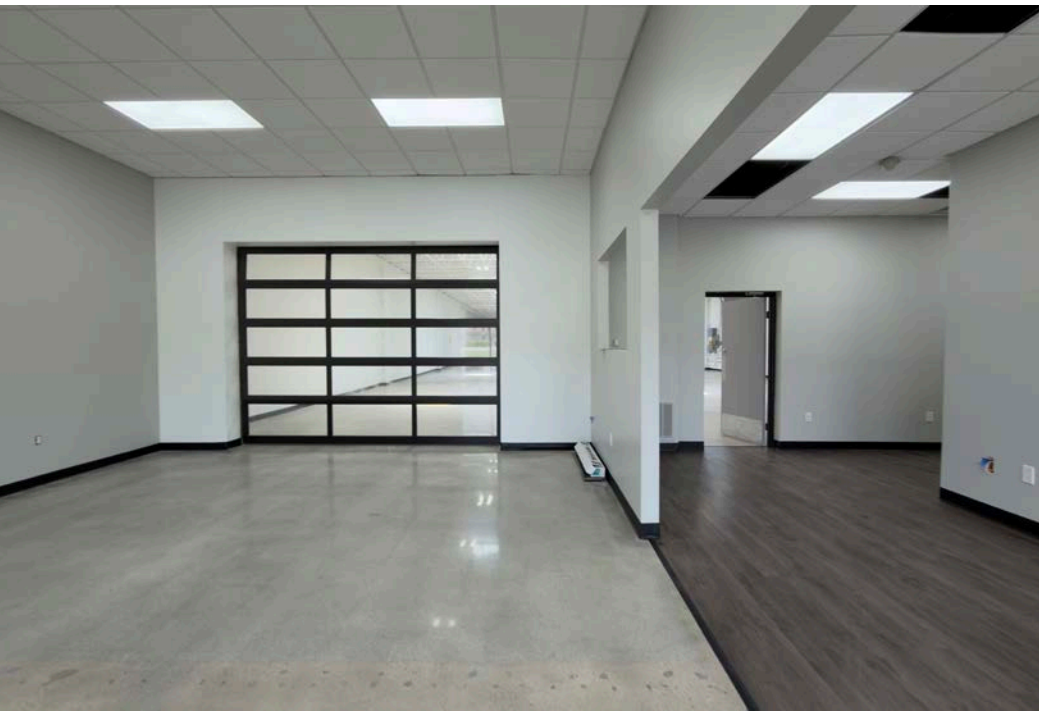
SHARONVILLE, OHIO 45241

INFO@SQFTCOMMERCIAL.COM
(513) 843-1600
SQFTCOMMERCIAL.COM



11574 GONDOLA ST.
SHARONVILLE, OHIO 45241

INFO@SQFTCOMMERCIAL.COM
(513) 843-1600
SQFTCOMMERCIAL.COM



11574 GONDOLA ST.
SHARONVILLE, OHIO 45241

INFO@SQFTCOMMERCIAL.COM
(513) 843-1600
SQFTCOMMERCIAL.COM

