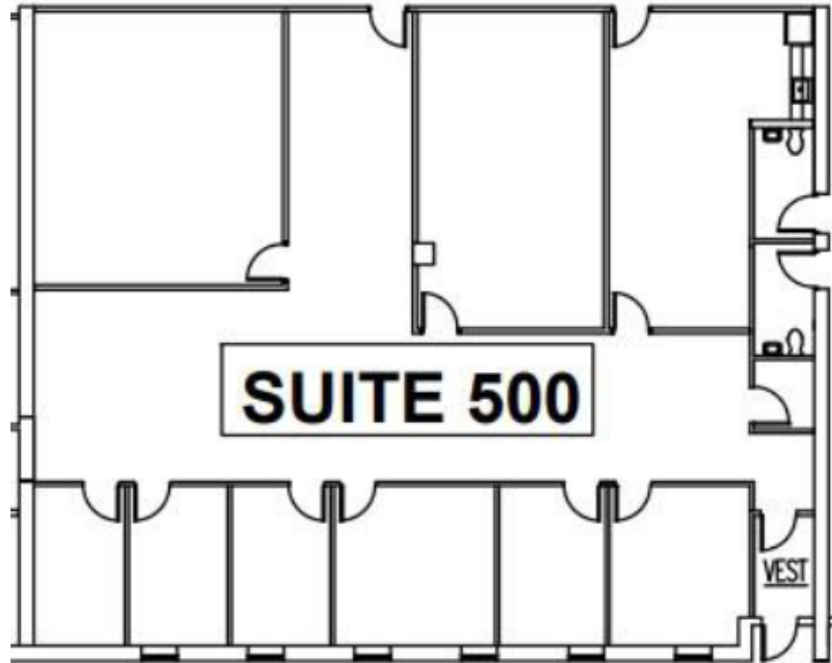


SUITE 500 | 3,839 SF

4951 Indiana Ave | Lisle, IL



SPACE NOTES

- 6 Private Offices
- 1 Conference Room
- Kitchen Area
- Access to Common Area Restrooms



John Millner, CCIM
630.480.6342
JMillner@VersaRES.com

Ryan Moen, SIOR
630.480.6346
RMoen@VersaRES.com

1 MID AMERICA PLAZA, 3RD FLOOR
OAKBROOK TERRACE, IL 60181
630.480.6413

EXCLUSIVELY LISTED BY

VERSA
REAL ESTATE SERVICES