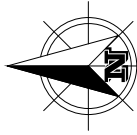
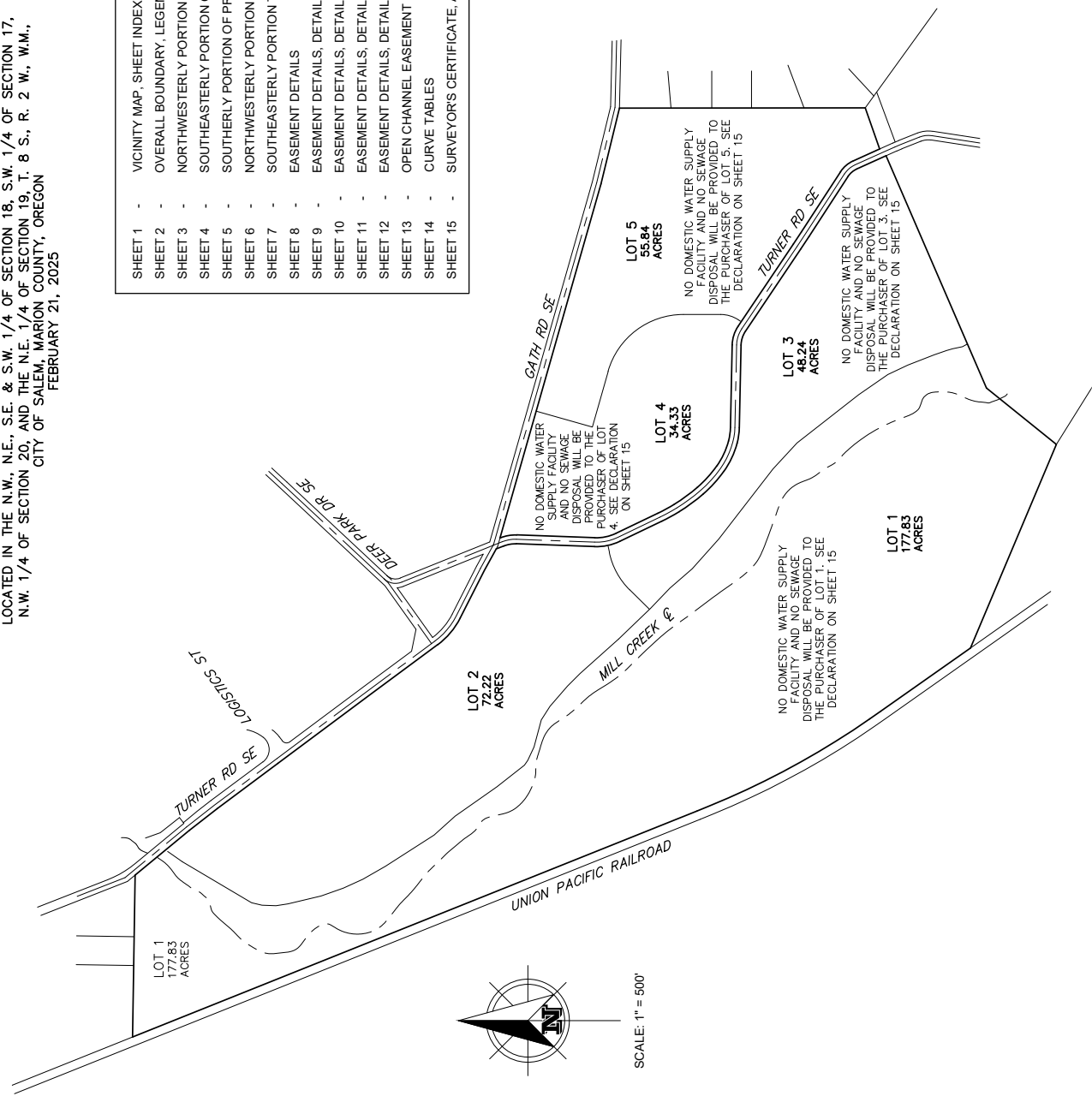


HERRON CROSSING

LOCATED IN THE N.W., N.E., S.E. & S.W. 1/4 OF SECTION 18, S.W. 1/4 OF SECTION 17,
N.W. 1/4 OF SECTION 20, AND THE N.E. 1/4 OF SECTION 19, T. 8 S., R. 2 W., W.M.,
CITY OF SALEM, MARION COUNTY, OREGON
FEBRUARY 21, 2025

SHEET INDEX

SHEET 1	- VICINITY MAP, SHEET INDEX, SURVEY AND DEED REFERENCES
SHEET 2	- OVERALL BOUNDARY, LEGEND, NARRATIVE, CURVE TABLE FOR CURVES 1-4
SHEET 3	- NORTHWESTERLY PORTION OF PROPERTY DETAIL, DETAIL "A"
SHEET 4	- SOUTHEASTERLY PORTION OF PROPERTY DETAIL, DETAIL "B"
SHEET 5	- SOUTHERLY PORTION OF PROPERTY DETAIL, FOUND MONUMENTS LIST
SHEET 6	- NORTHWESTERLY PORTION TURNER RD SE RIGHT OF WAY DETAIL
SHEET 7	- SOUTHEASTERLY PORTION TURNER RD SE RIGHT OF WAY DETAIL, PGE DETAIL
SHEET 8	- EASEMENT DETAILS
SHEET 9	- EASEMENT DETAILS, DETAIL "C"
SHEET 10	- EASEMENT DETAILS, DETAIL "D"
SHEET 11	- EASEMENT DETAILS, DETAIL "E"
SHEET 12	- EASEMENT DETAILS, DETAIL "F"
SHEET 13	- OPEN CHANNEL EASEMENT DETAIL, PUMP STATION PIPELINE EASEMENT DETAILS "G" & "H"
SHEET 14	- CURVE TABLES
SHEET 15	- SURVEYOR'S CERTIFICATE, APPROVALS, DECLARATION, ACKNOWLEDGEMENTS, PLAT NOTES



SCALE: 1" = 500'

SURVEY REFERENCES:

- [1] MCSR 2643
- [2] HAZELWOOD SUBDIVISION-V. 37, P. 15, BOTP
- [3] MCSO Reimon 65-80 Book Page 72
- [4] MCSR 30939
- [5] MCSR 32582
- [6] MCSR 34666
- [7] MCSR 34670
- [8] MCSR 35280
- [9] MCSR 36689
- [10] MILL CREEK CORPORATE CENTER-V, H47, P. 49, BOTP PARTITION PLAT 2016-04
- [11] MCSR 25810
- [12] MCSR 1949
- [13] WALN - V, H49, P. 28, BOTP
- [14] SCANNELL CORPORATE CENTER - V, H49, P. 5, BOTP
- [15] MCSR 6925
- [16] MCSR 8560
- [17] MCSR 8560
- [18] MCSR 14518

DEED REFERENCES:

- R1 INST # 2025-25516, MCDR
- R2 VOLUME 230, PAGE 337, MCDR
- R3 REEL 2943, PAGE 402, MCDR



BARKER SURVEYING

3657 KASHMIR WAY, SE
SALEM, OREGON 97317
PHONE (503) 588-8800
FAX (503) 363-2469
EMAIL: GREG@BARKERWILSON.COM

REGISTERED
PROFESSIONAL
LAND SURVEYOR

GREGORY L. WILSON
O R E G O N
JULY 19, 1994
2697

EXPIRES: 6/30/2026