

480 CENTER STREET

480 CENTER STREET, GRAYSLAKE, IL 60030

OFFICE SPACE FOR LEASE



OFFERING SUMMARY

Available SF: 2,525 SF

Year Built: 2005

Parking Ratio: 6.30/1,000 SF

Access: 24/7 Access

Lease Rate: \$14.00 PSF (MG)

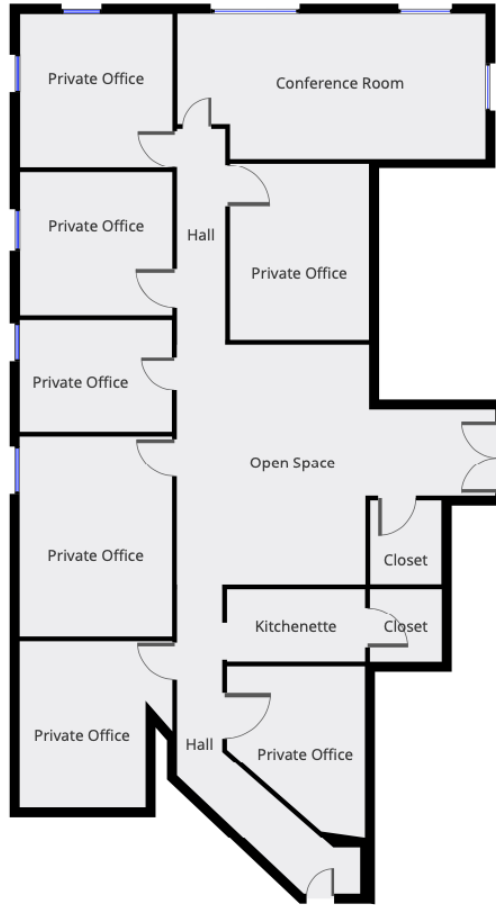
PROPERTY HIGHLIGHTS

- Bank on-site
- Centrally located in center of commercial district
- Ready for immediate occupancy
- Located adjacent to building elevator offering immediate suite identity

480 CENTER STREET

480 CENTER STREET, GRAYSLAKE, IL 60030

AVAILABLE SPACE



SPACE	LEASE RATE	LEASE TYPE	SIZE (SF)	TERM	COMMENTS
Suite 100	\$14.00 PSF	Modified Gross	2,525 SF	3-5+ Years	Plug & Play Solution

480 CENTER STREET

480 CENTER STREET, GRAYSLAKE, IL 60030

ADDITIONAL PHOTOS



480 CENTER STREET

480 CENTER STREET, GRAYSLAKE, IL 60030

LOCATION MAPS

