



▶ Suite 400

▶ Suite 950

▶ Suite 1100

**Contact**

**Stephanie Lui\***

Associate Vice President

613 323 7883

Stephanie.Lui@jll.com

**For Lease**

**220 Laurier Ave W**

Ottawa, ON



**127,000**  
Total SF



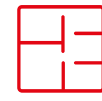
**\$18.40**  
Additional Rent  
(2024)



**15**  
Floors



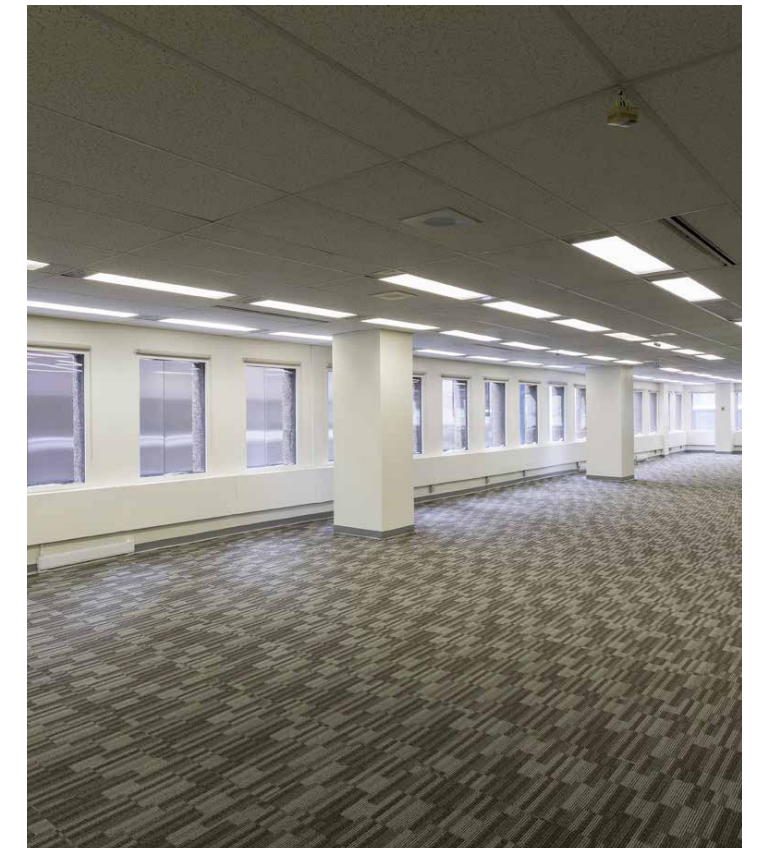
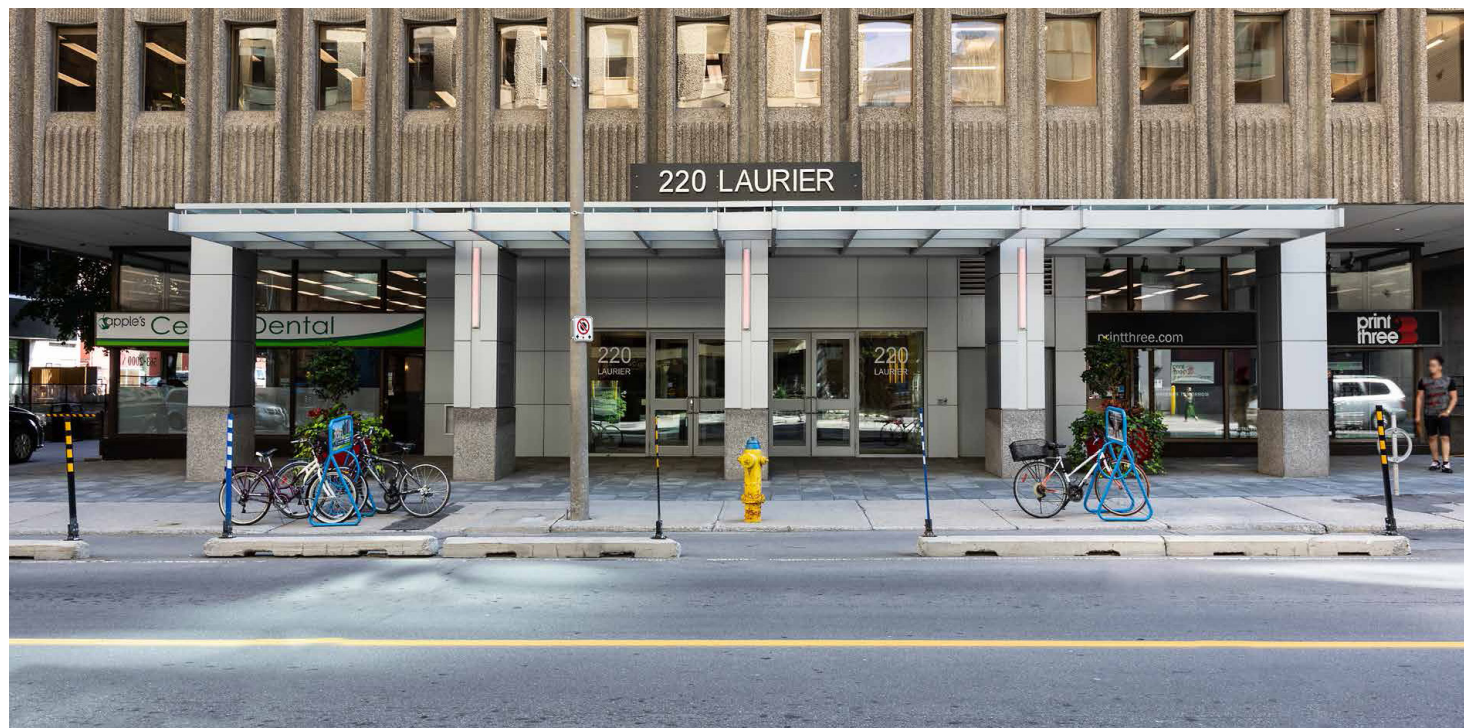
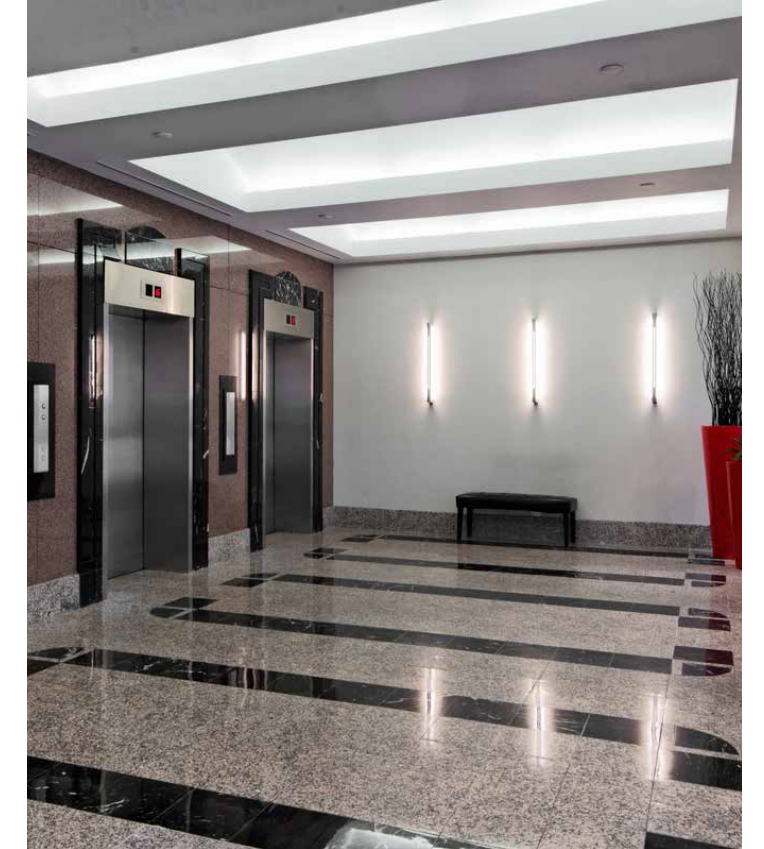
Certified  
BOMA BEST



Open, efficient  
and flexible  
floor plates

## Features

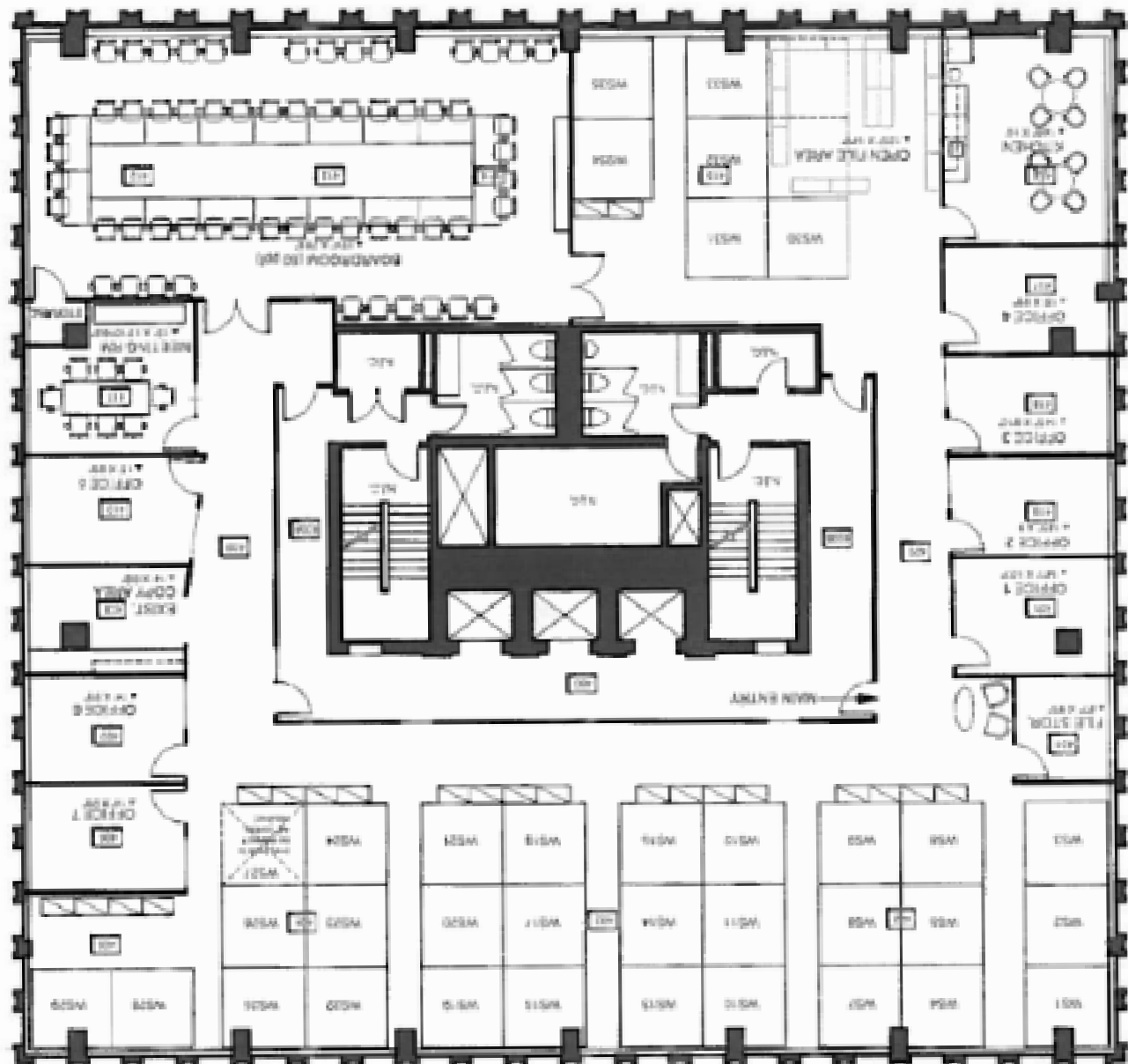
- Recently renovated lobby and elevator system
- Washroom upgrades (completed in 2019)
- 24-hour access card system
- On-site tenant exclusive conference centre
- Three levels of tenant exclusive underground parking with 1 EV charging station
- Secured bicycle racks in underground parking garage
- Private on-site shower facilities



**Suite 400: 8,690 SF**

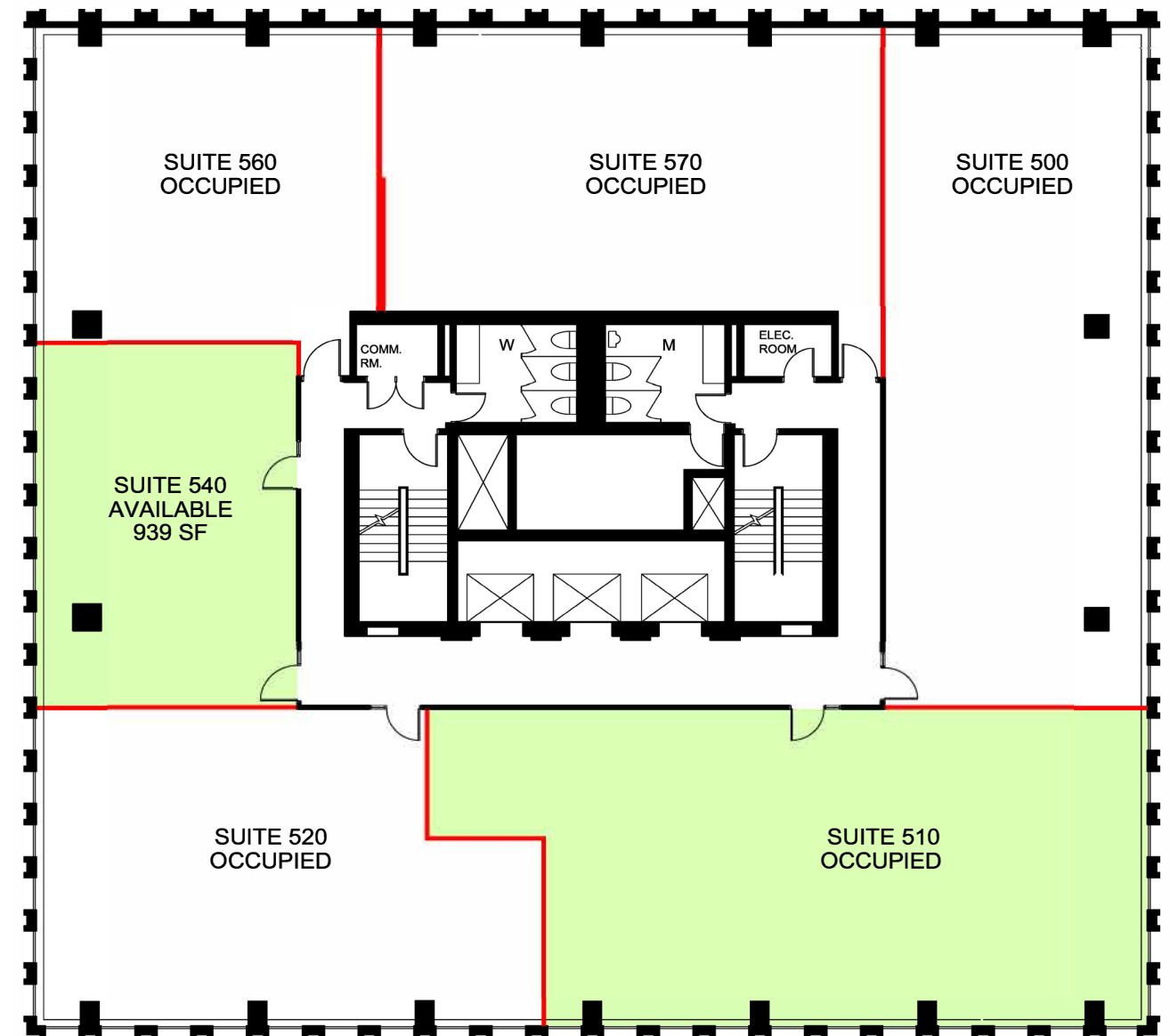
- Full floor opportunity, can be demised to 3,500 SF
- Mix of open and closed offices

▶ Suite 400



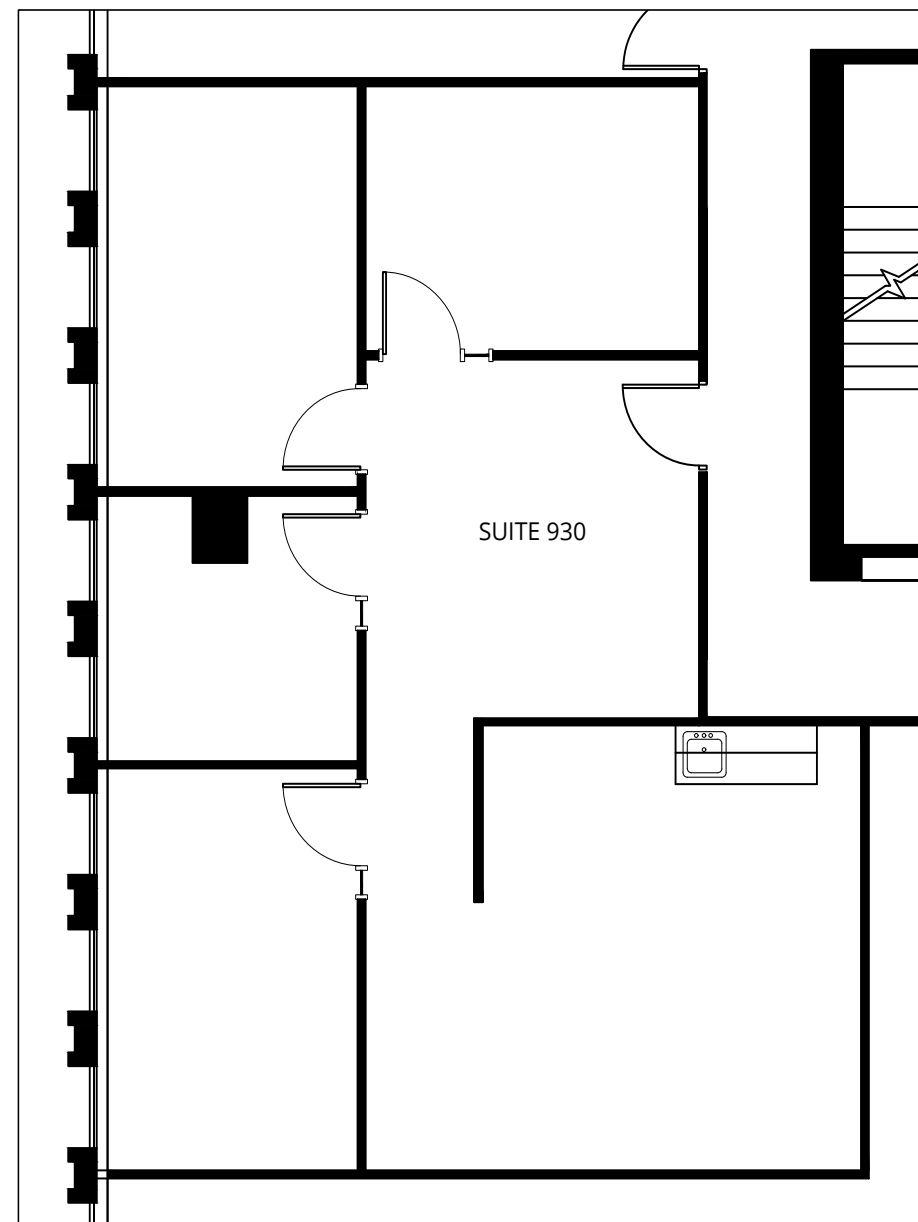
**Suite 540: 939 SF**

- Open concept space with kitchenette



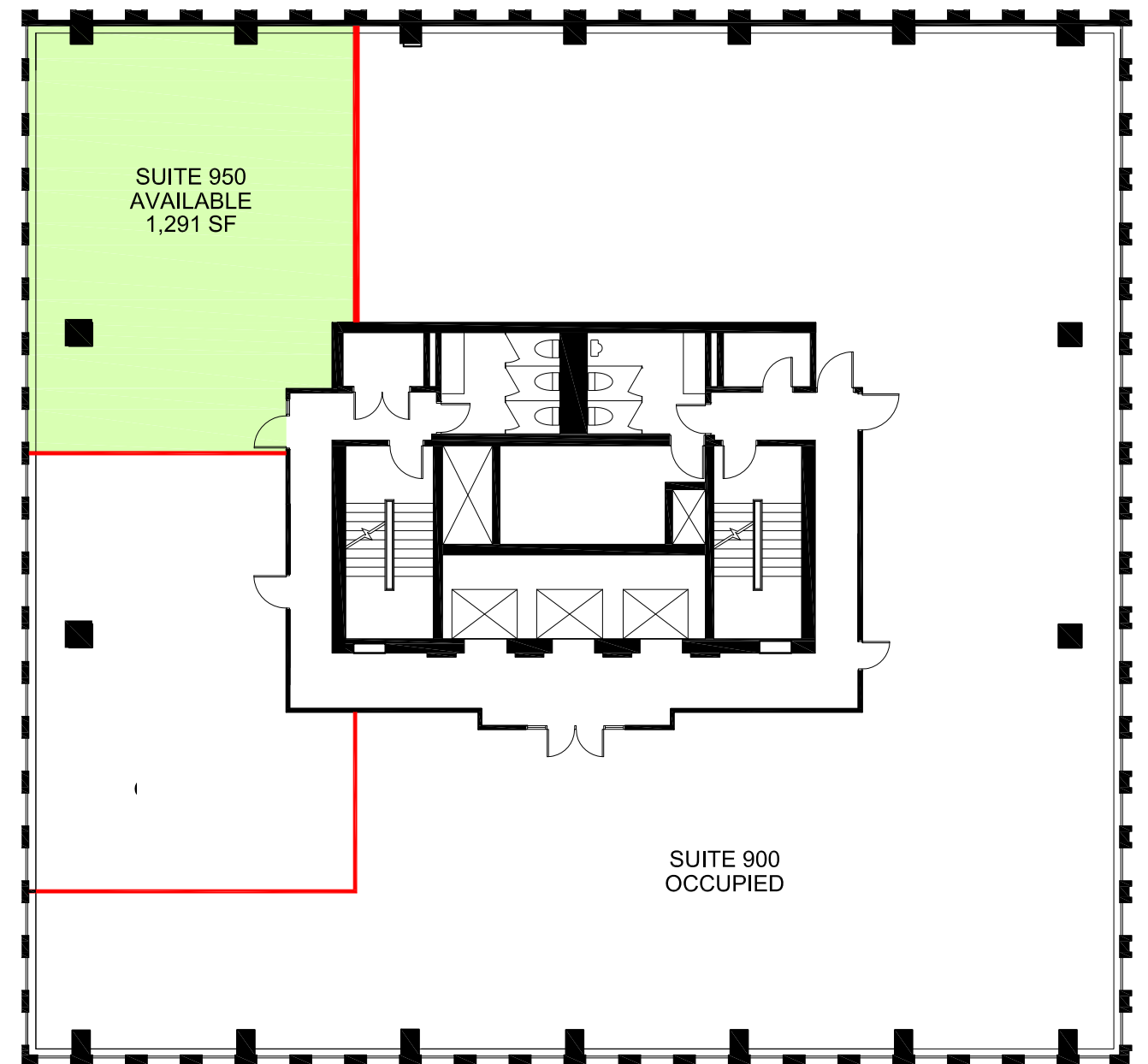
### Suite 930: 1,207 SF

- Fully built space with 4 offices, 1 meeting room, reception and kitchenette
- Contiguous with Suite 950 (2,498 SF)



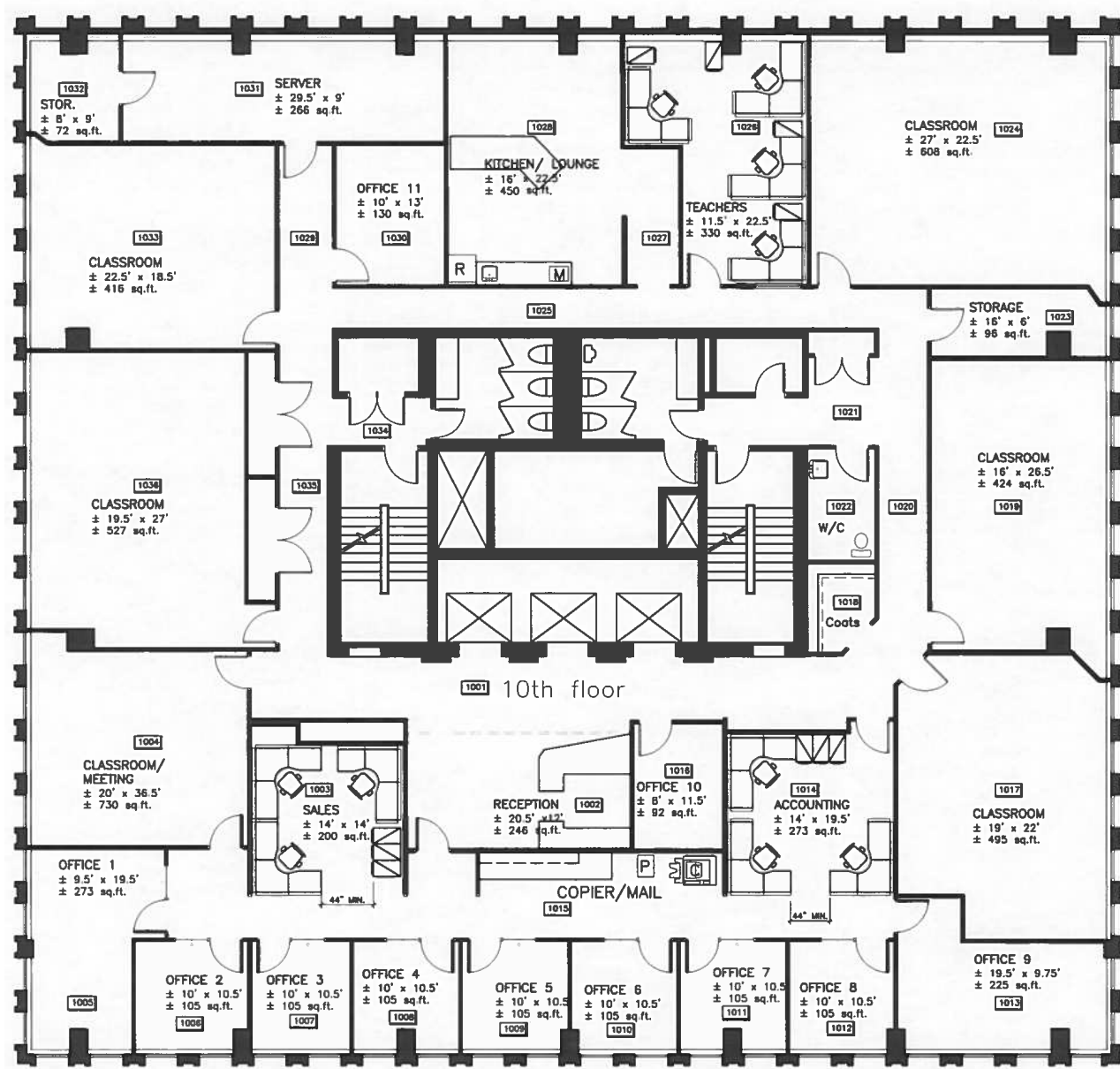
### Suite 950: 1,291 SF

- Base building condition
- Contiguous with Suite 930 (2,498 SF)



**Suite 1000: 8,690 SF**

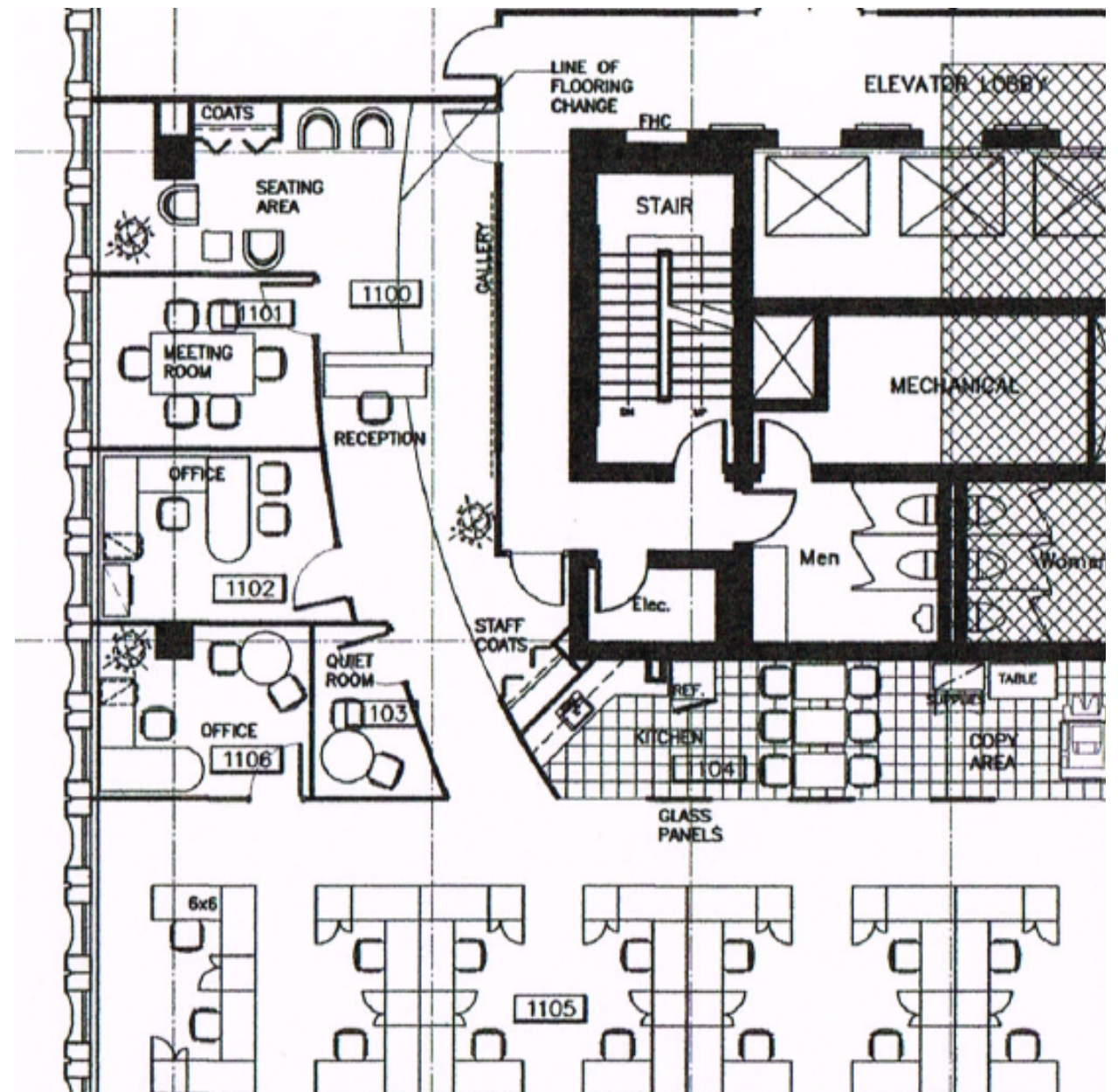
- Full floor opportunity with no common corridor - mix of enclosed offices and meetings rooms, large kitchen and reception area



**Suite 1100: 2,795 SF**

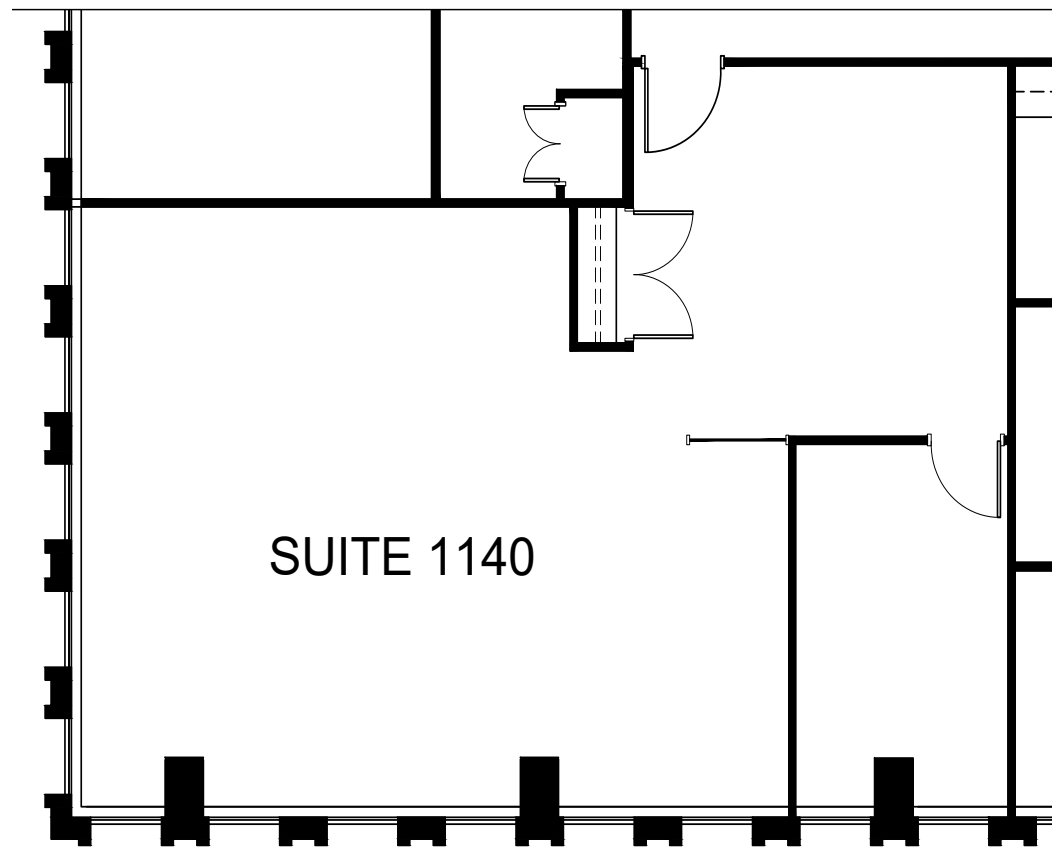
- Fully built space; 3 offices, 1 meeting room, kitchen and open work stations

**Suite 1100**



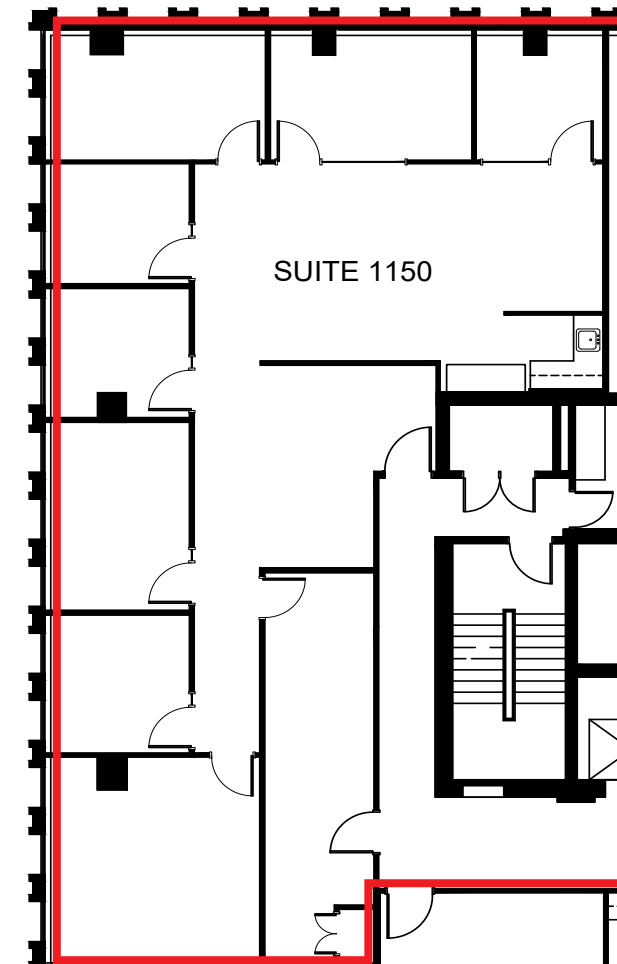
**Suite 1140: 1,224 SF**

- Fully improved space – new carpet, 1 enclosed office/meeting room and reception area
- Suite 1140 and Suite 1150 can be contiguous for 3,679 SF



**Suite 1150: 2,455 SF**

- Fully built space with 6 offices, 1 boardroom, kitchen and storage room.
- Suite 1140 and Suite 1150 can be contiguous for 3,679 SF



## Food

- |                           |                             |
|---------------------------|-----------------------------|
| 1. Parliament Pub         | 12. Tim Hortons             |
| 2. Bridgehead             | 13. Sushi Kan 3             |
| 3. Milestones             | 14. Eggspectation           |
| 4. Metropolitan Brasserie | 15. Tosca                   |
| 5. Courtyard              | 16. Rangoon                 |
| 6. Sidedoor               | 17. Grounded Kitchen        |
| 7. Restaurant 18          | 18. Clocktower              |
| 8. Chez Lucien            | 19. Johnny Farina           |
| 9. Bier Markt             | 20. Beckta                  |
| 10. McDonald's            | 21. Royal Oak               |
| 11. Starbucks             | 22. Mamma Teresa Ristorante |




## Retail

- |                       |                      |
|-----------------------|----------------------|
| 1. Rideau Centre      | 5. Chapters          |
| 2. The Bay            | 6. Apple Store       |
| 3. LCBO               | 7. Marcello's Market |
| 4. Shoppers Drug Mart |                      |

## Services

1. RBC
2. CIBC
3. Scotiabank
4. TD Bank
5. BMO
6. Bank of Canada

## Other

-  Light Rail Station
-  Bus Stop
-  Parking

## Driving Times

Ottawa International Airport	20 mins
Parliament Hill	4 mins



# 220 Laurier Ave W

Ottawa, ON

---

## Contact

**Stephanie Lui\***

Associate Vice President

613 323 7883

Stephanie.Lui@jll.com



*Although information has been obtained from sources deemed reliable, JLL does not make any guarantees, warranties or representations, express or implied, as to the completeness or accuracy as to the information contained herein. Any projections, opinions, assumptions or estimates used are for example only. There may be differences between projected and actual results, and those differences may be material. JLL does not accept any liability for any loss or damage suffered by any party resulting from reliance on this information. If the recipient of this information has signed a confidentiality agreement with JLL regarding this matter, this information is subject to the terms of that agreement. ©2024. Jones Lang LaSalle IP, Inc. All rights reserved. \*Sales Representative \*\*Broker*