

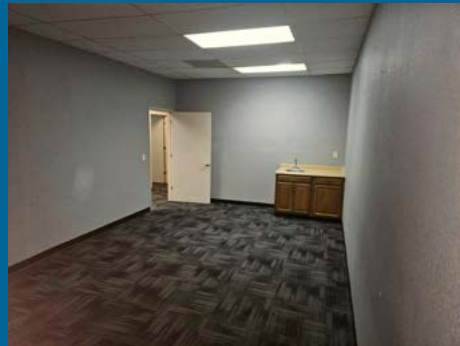
FOR LEASE

4,340 SF Space Available
At \$16.00 SF/YR
+ NNN - Space Divisible

16027—16029 SE McLoughlin Blvd.
Milwaukie, OR 97267

Large open space offer multiple uses

4 private offices & large break room,
3 restrooms/2 of which are ADA compliant.



Windermere Community Commercial Realty

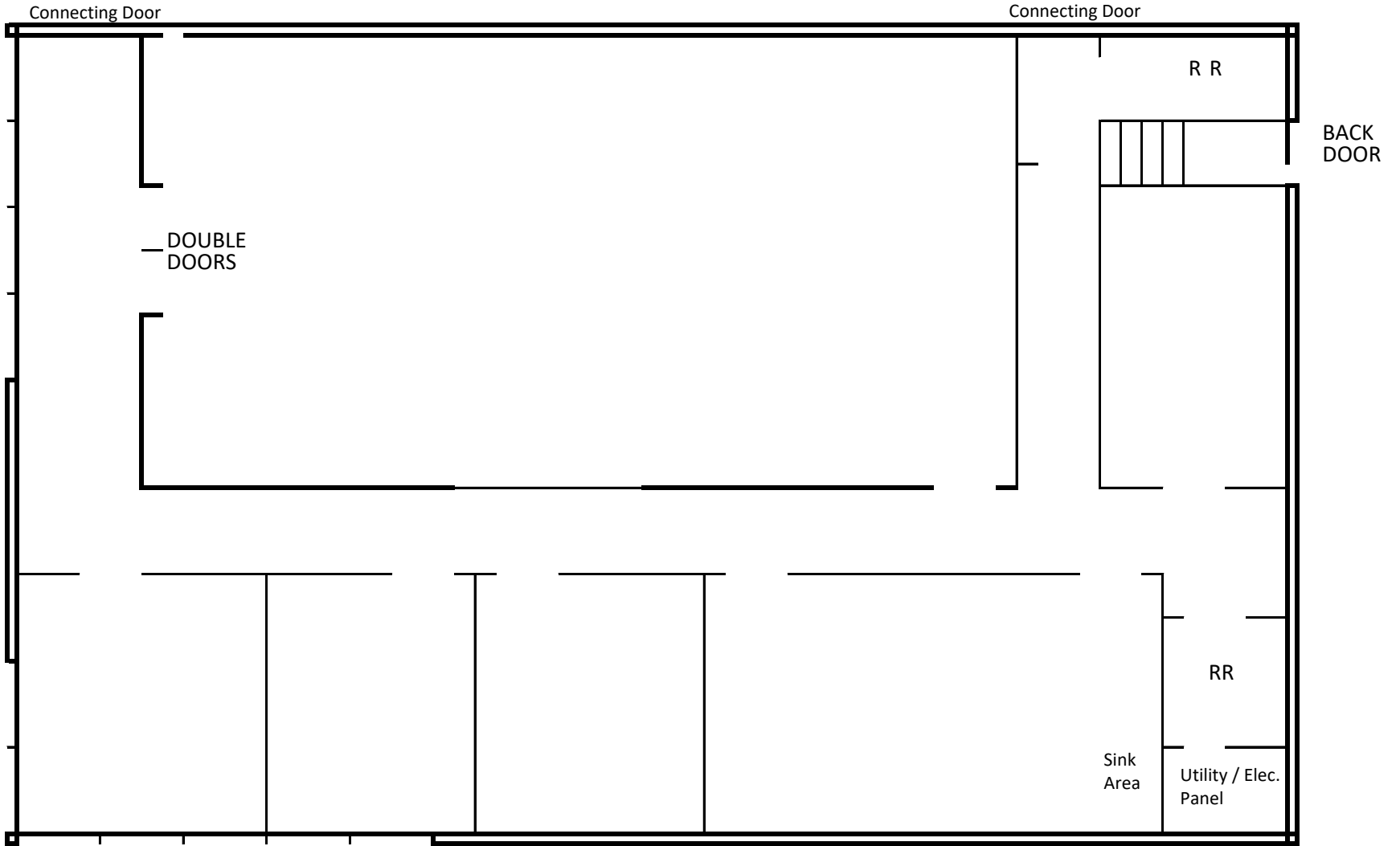
2105 NE Cesar Chavez Blvd. Suite 200, Portland, OR 97212



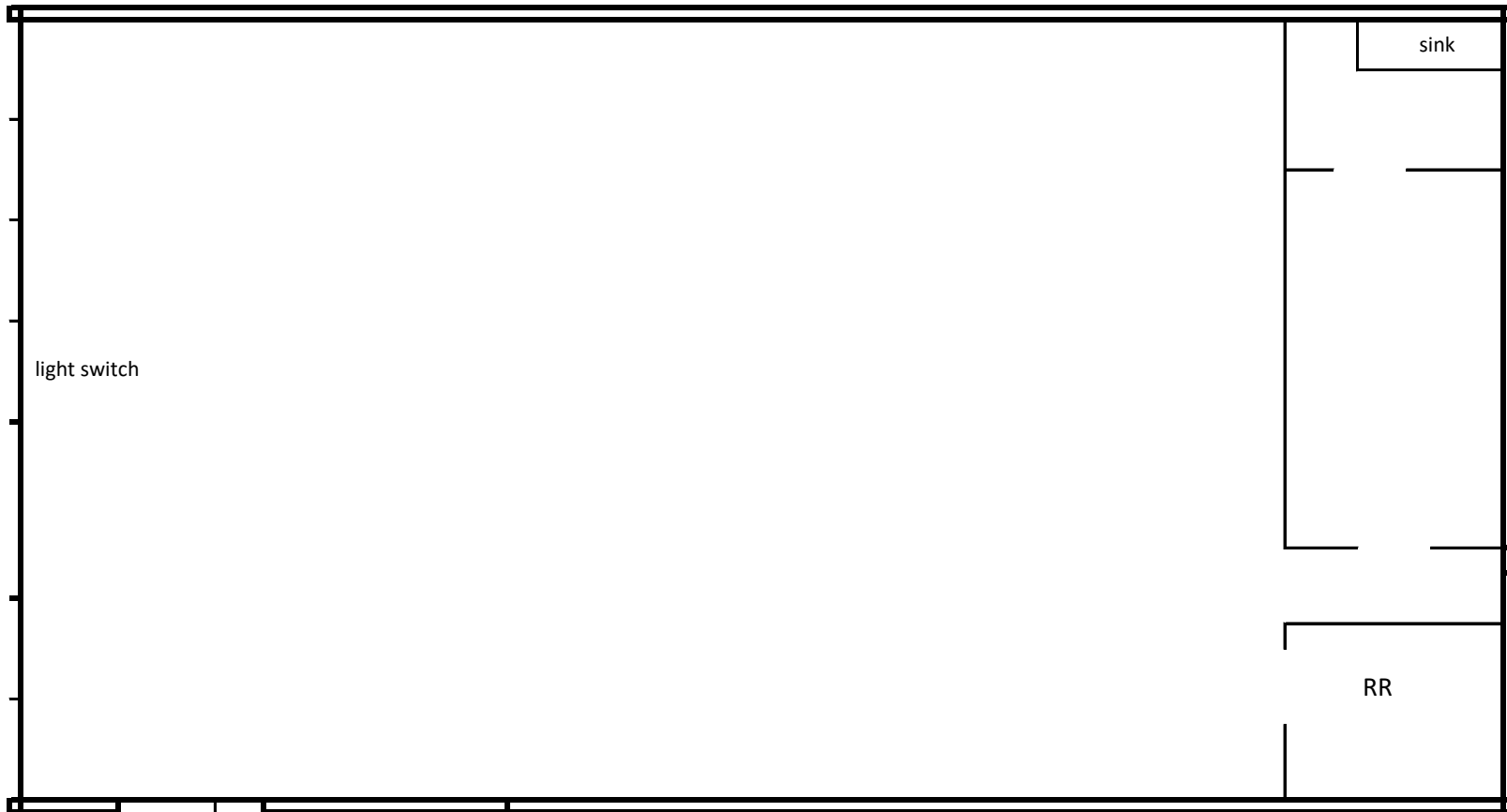
Contact below for viewing appointments and more information:

Craig Gilbert by email: cgilbert@windermere.com or by mobile: 503-313-8282

Rose Ojeda by email: roseojeda@windermere.com, or by mobile: 503-998-6450



16027 SE McLoughlin Blvd. - 2294 SF Approximately



16029 SE McLoughlin Blvd. - 2046 SF Approximately