

COMMERCIAL DEVELOPMENT OPPORTUNITY

6.077 ACRES



SALE



RIC WILLIAMSON & AZLE HWY

WEATHERFORD, TEXAS



EXCLUSIVELY MARKETED BY

GRANT HUFF

Vice President

ghuff@formationtx.com

M: 817.475.2343

2906 SE Loop 820 | Suite G

Fort Worth, Texas 76140



PROPERTY SUMMARY & FEATURES



Features

- 6.077 acres
- Weatherford ETJ, Parker County, Texas.
- Zoning: No current zoning; however, Weatherford's future use plan calls for a mix of commercial and single-family residential
- Utilities: City Water and Electricity to the site
- Weatherford ISD
- Access and Visibility on the new Ric Williamson Memorial Hwy Loop

6 AC Commercial Site on Busy Corridor

Located at the NWC of Ric Williamson Memorial Highway and Azle Hwy (FM 730), this ±6-acre commercial land site in Weatherford's ETJ combines prime access with utilities in place.

With future land-use plans encouraging a blend of residential and commercial development, it's perfectly positioned to support the area's booming population and economic growth.

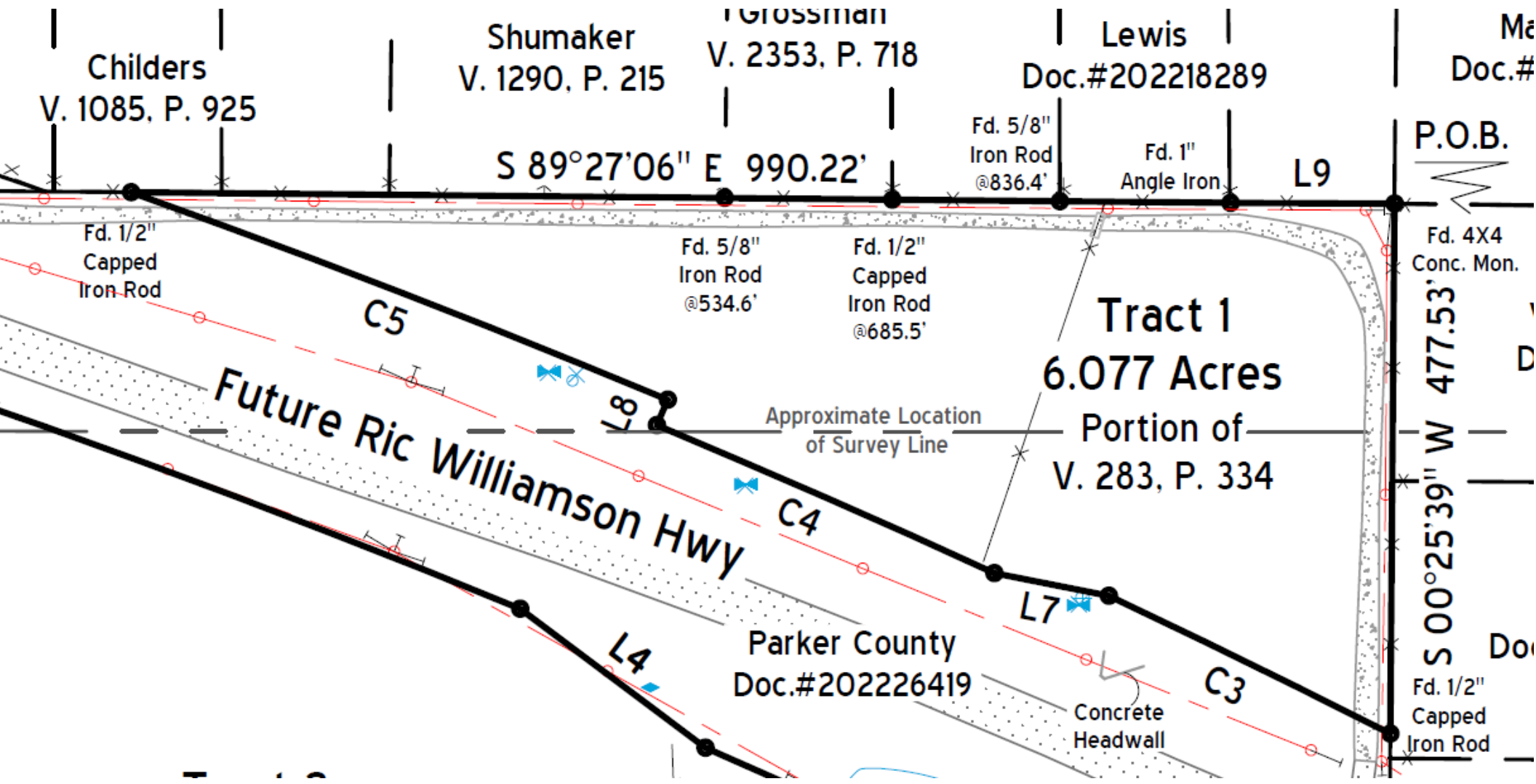
\$5.00/PSF

PROPERTY AERIAL



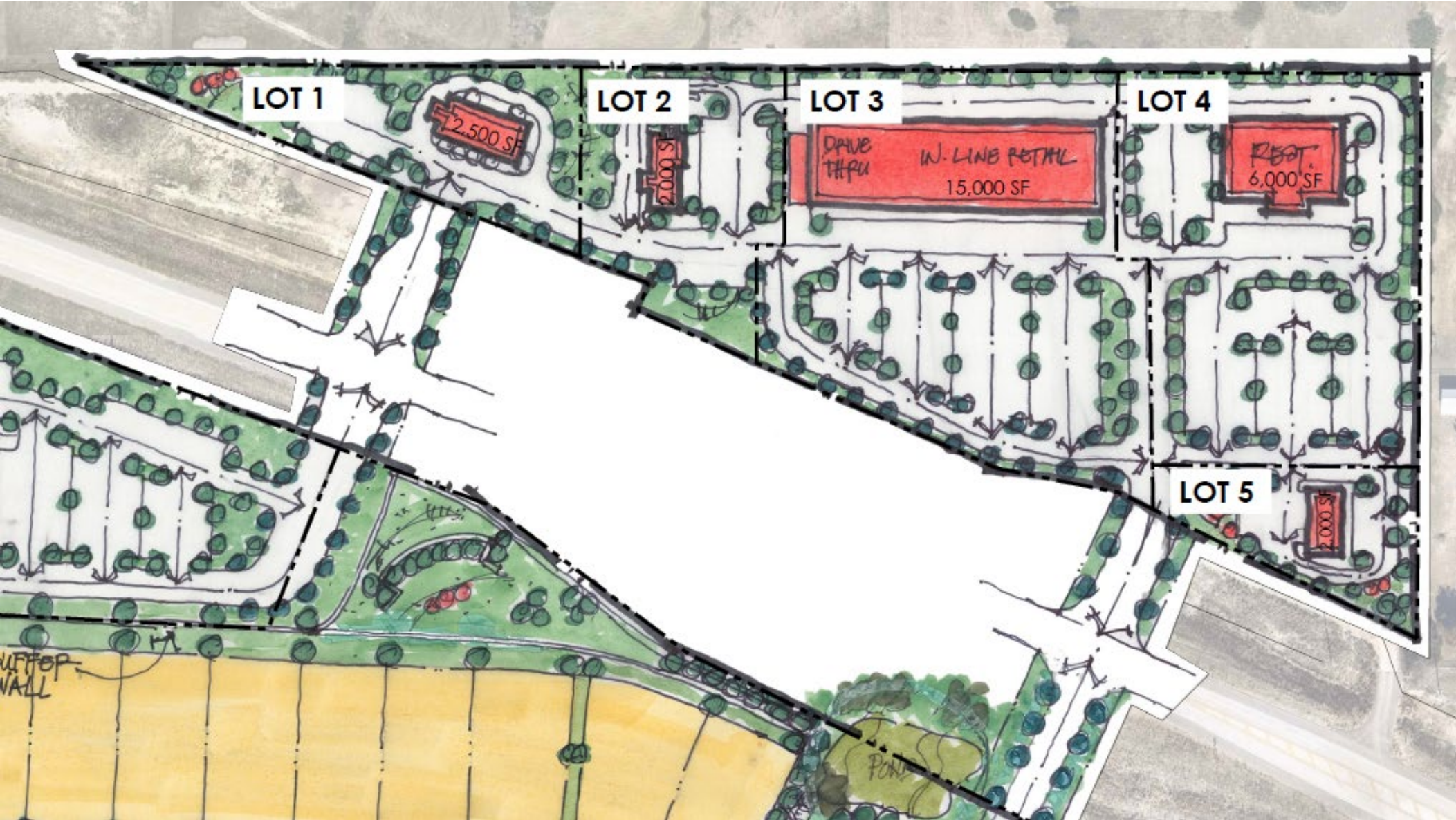
Information contained herein has been obtained from sources deemed reliable. While we believe this information to be true, Formation Real Estate, LLC makes no guarantees, warranties, or representations as to the completeness or accuracy thereof. All information is submitted subject to errors and/or omissions.

PROPERTY SURVEY



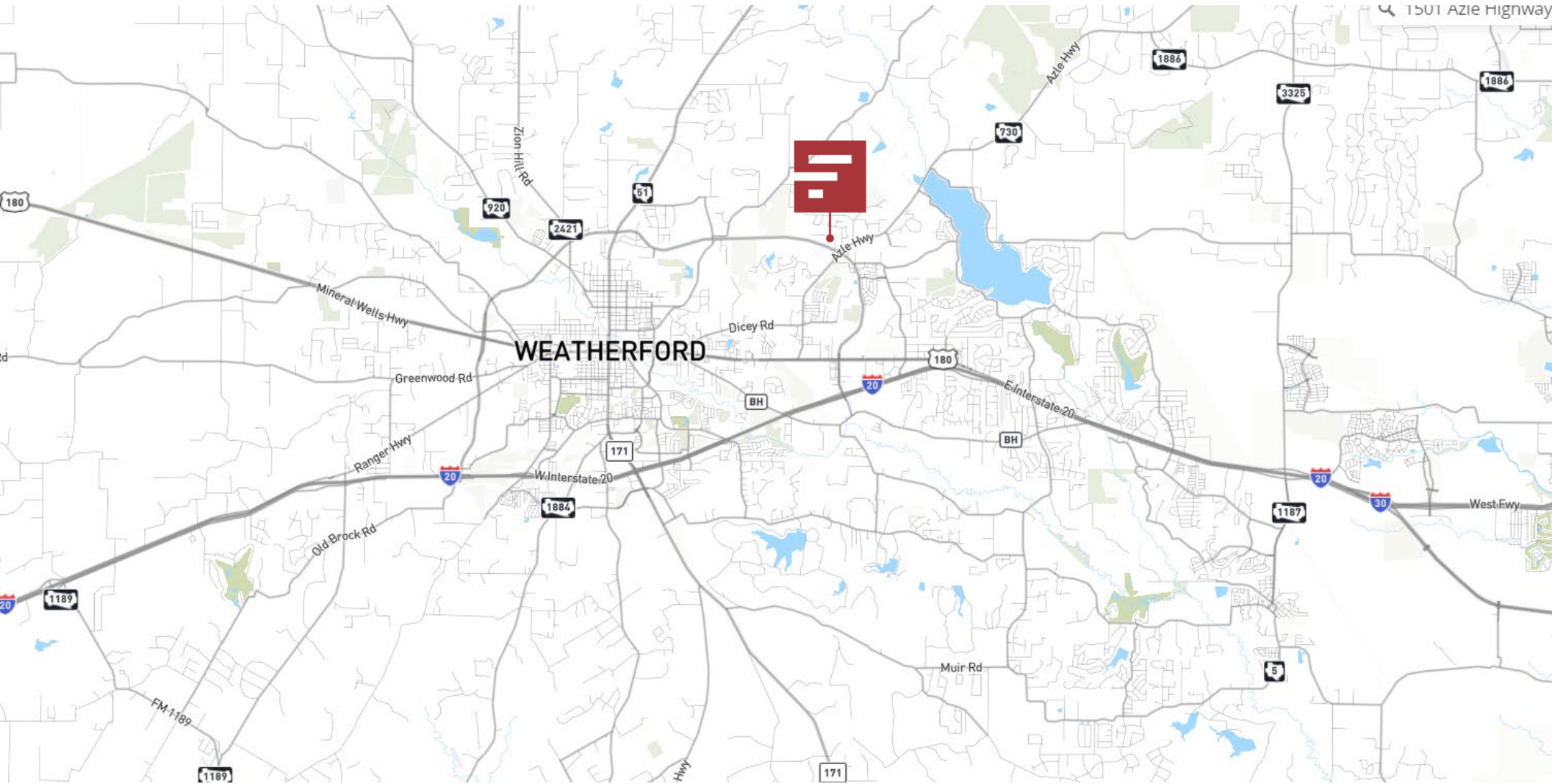
Information contained herein has been obtained from sources deemed reliable. While we believe this information to be true, Formation Real Estate, LLC makes no guarantees, warranties, or representations as to the completeness or accuracy thereof. All information is submitted subject to errors and/or omissions.

CONCEPT PLAN



Information contained herein has been obtained from sources deemed reliable. While we believe this information to be true, Formation Real Estate, LLC makes no guarantees, warranties, or representations as to the completeness or accuracy thereof. All information is submitted subject to errors and/or omissions.

PROPERTY MAP



Information contained herein has been obtained from sources deemed reliable. While we believe this information to be true, Formation Real Estate, LLC makes no guarantees, warranties, or representations as to the completeness or accuracy thereof. All information is submitted subject to errors and/or omissions.



FORMATION
REAL ESTATE

CONTACT BROKERS

GRANT HUFF

Vice President

ghuff@formationtx.com

M: 817.475.2343

FORMATION REAL ESTATE, LLC

2906 SE Loop 820 | Suite G

Fort Worth, Texas 76140



All information furnished regarding property for sale, rental or financing is from sources believed to be reliable, but no warranty or representation is made to the accuracy thereof and same is submitted to errors, omissions, change of price, rental or other conditions prior to sale, lease or financing or withdrawal without notice. The information contained herein is not a substitute for a thorough due diligence investigation. No liability of any kind based on the information is to be imposed on the broker herein.

FORMATIONTX.COM