



FOR SUBLEASE

Fairfield Commerce Park III

110 MERCANTILE DRIVE
FAIRFIELD, OH 45014

Available Space

±399,964 SF

Office Space

±17,485 SF

Lease Rate

\$5.75/SF NNN

Operating Expenses

\$1.18/SF

Property Highlights

- 40' Clear height
- ESFR Sprinkler
- 42 Docks (cross docked)
- 2 Drive-ins
- 54' x 50' Column spacing
- Master sublease expires on 9/30/2029
- Minutes to I-275 & I-75

For information, please contact:

Si Pitstick, SIOR, CCIM
Executive Managing Director
t 513-508-5014
si.pitstick@nmrk.com

Josh Young, SIOR
Senior Managing Director
t 513-509-0404
josh.young@nmrk.com

312 Walnut Street, Suite 1510
Cincinnati, OH 45202



nmrk.com

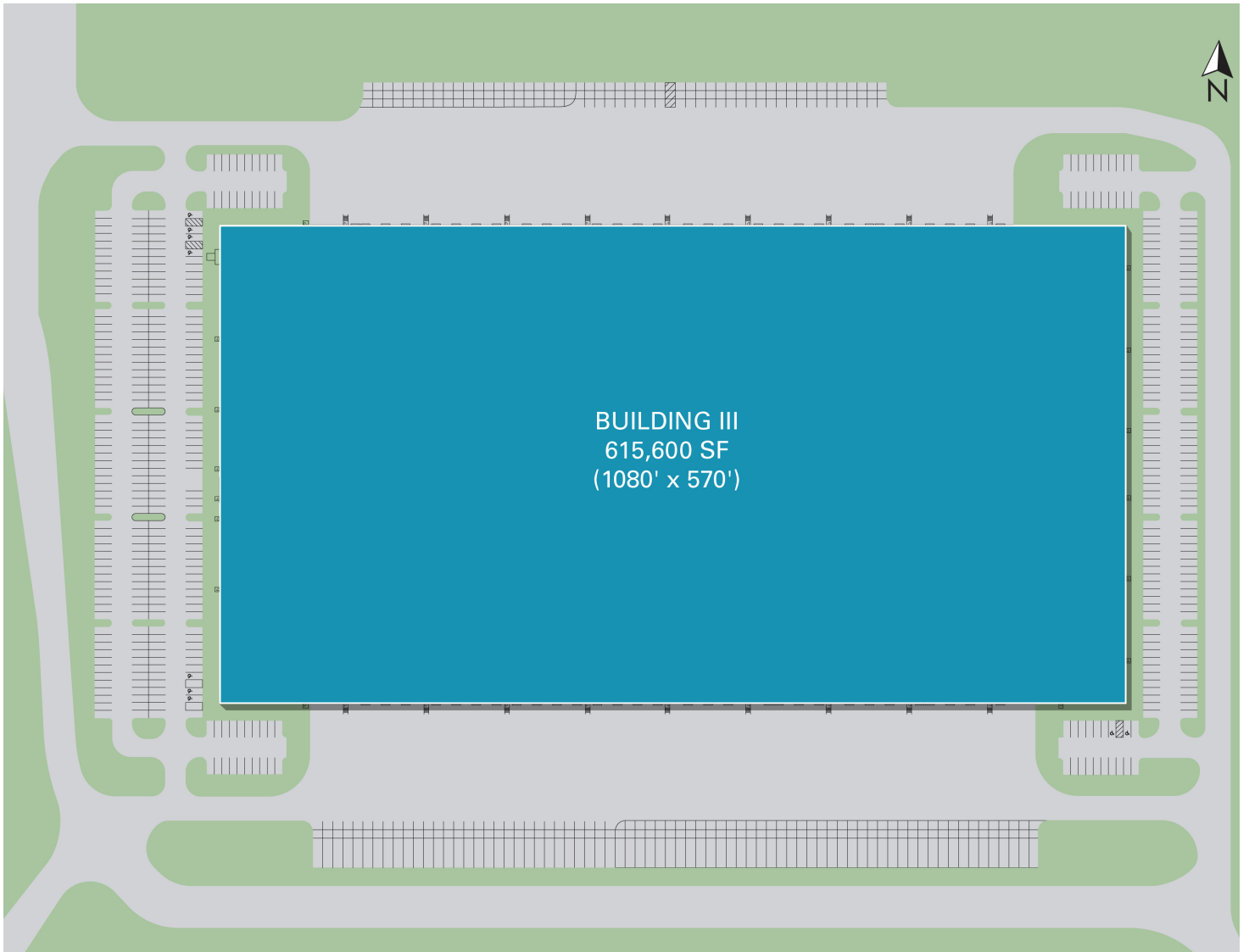
NEWMARK

The information contained herein has been obtained from sources deemed reliable but has not been verified and no guarantee, warranty or representation, either express or implied, is made with respect to such information. Terms of sale or lease and availability are subject to change or withdrawal without notice.

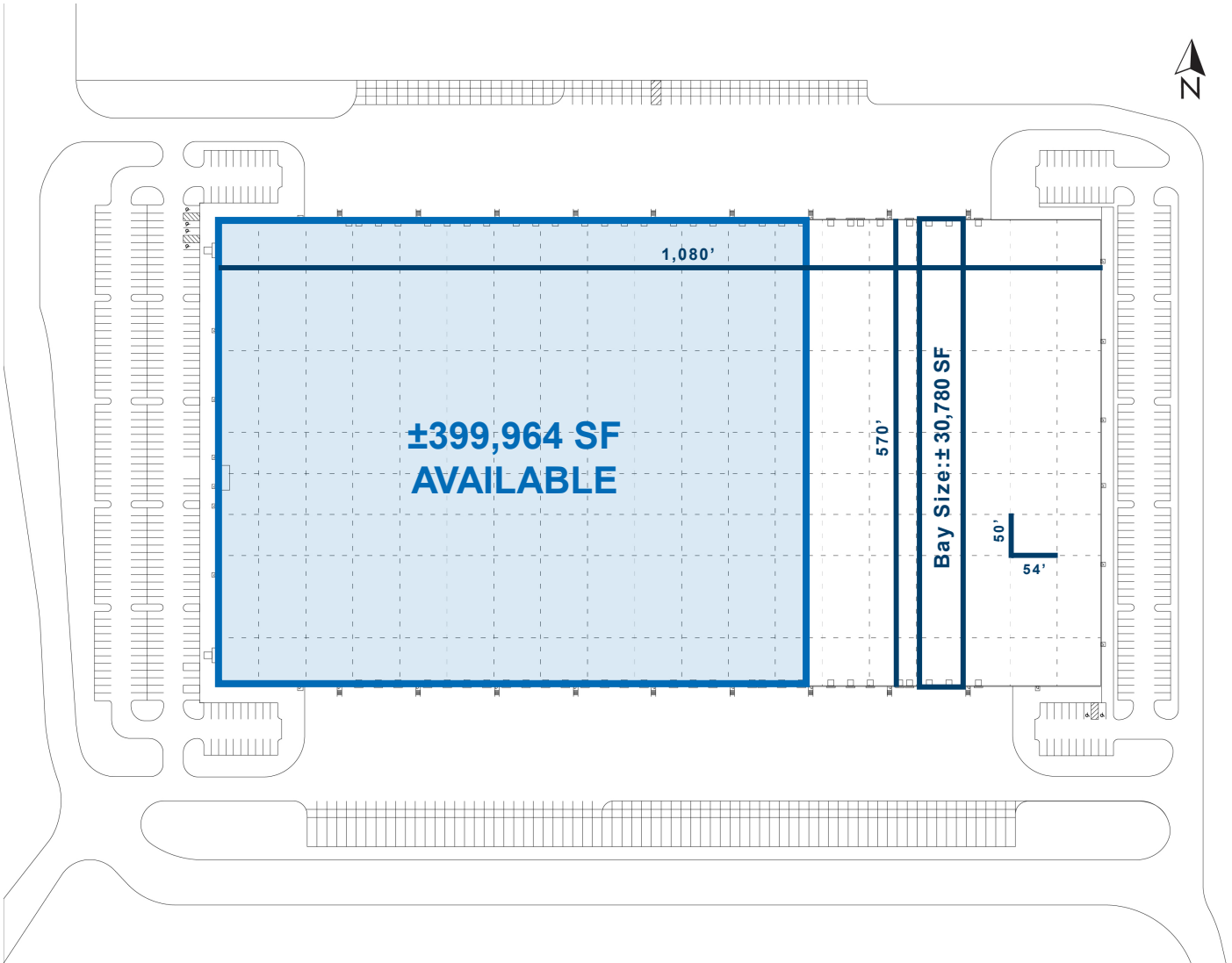
BUILDING SPECIFICATIONS

Location	City of Fairfield Butler County	Sprinkler	ESFR
Available Space	±399,964 SF	Heating	80/20 Units
Office Size	±17,485 SF	Air Conditioning	Several large conditioned spaces for processing including a 12,638 +-SF humidity/air-conditioned space at 40' clear.
Warehouse Size	±399,964 SF	Ventilation Fans	No
Divisible	No	Compressed Air Lines	No
Total Building Size	±615,600 SF	Outside Security Lighting	Yes
Land	27 AC	Lighting	LED
Zoning	M-2	Electrical Service	2,800 amps, 480-volt, 3 phase
Year Built	2022	Gas	Duke Energy
Construction	Concrete	Sewer	Butler County
Building Dimensions	1,080' x 570'	Water	Butler County
Column Spacing	54' x 50'	Available	Q3/Q4 2026
Bay Size	30,780 SF (54' x 570')	Sublease Term	Master lease expires on 9/30/2029
Roof Type	White TPO	Lease Rate	\$5.75/SF NNN
Clear Height	40'	Operating Expenses	Taxes: \$0.55/SF Insurance: \$0.07/SF CAM: \$0.56/SF Total: \$1.18/SF
Loading Facilities	42 Docks (cross docked) 2 Drive-in's (12' x 14')		
Parking	224 Auto spaces 71 Trailer spaces		
Restrooms	4 Sets		

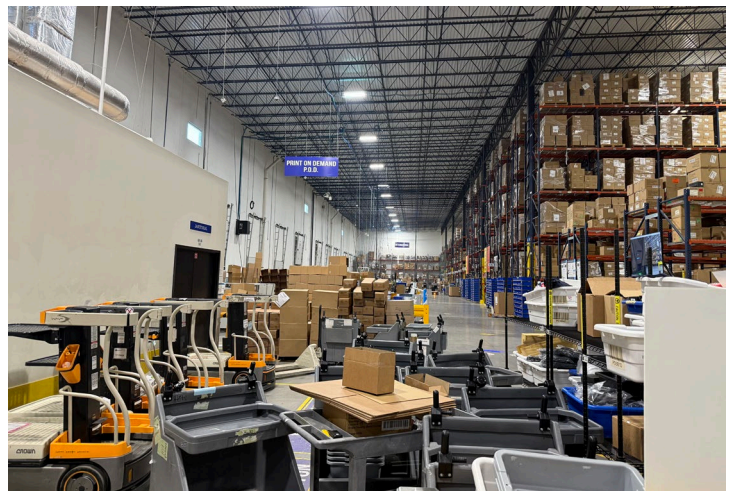
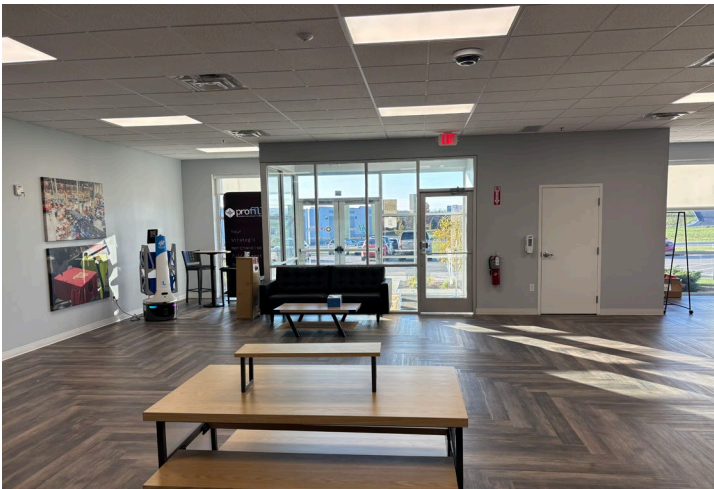
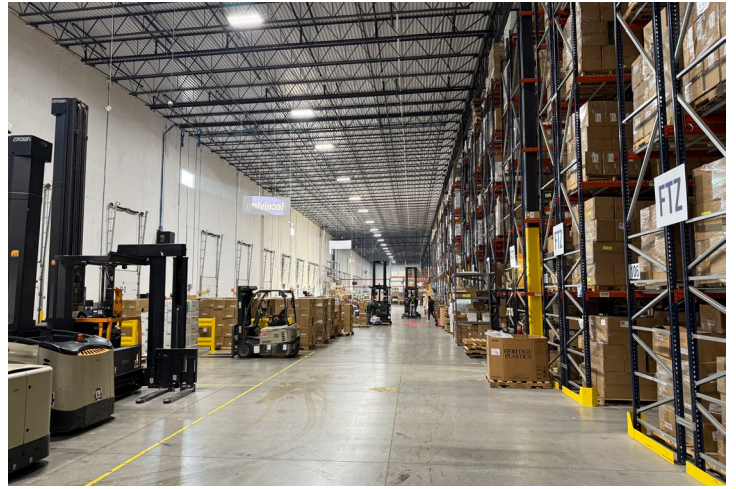
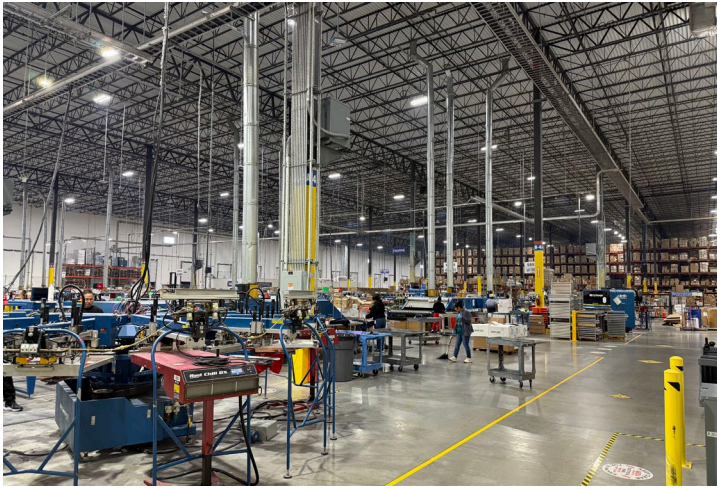
SITE PLAN



FLOOR PLAN



PROPERTY PHOTOS



AERIAL MAP



LOCATOR MAP



For information, please contact:

Si Pitstick, SIOR, CCIM
Executive Managing Director
t 513-508-5014
si.pitstick@nrmk.com

Josh Young, SIOR
Senior Managing Director
t 513-509-0404
josh.young@nrmk.com

312 Walnut Street, Suite 1510
Cincinnati, OH 45202

