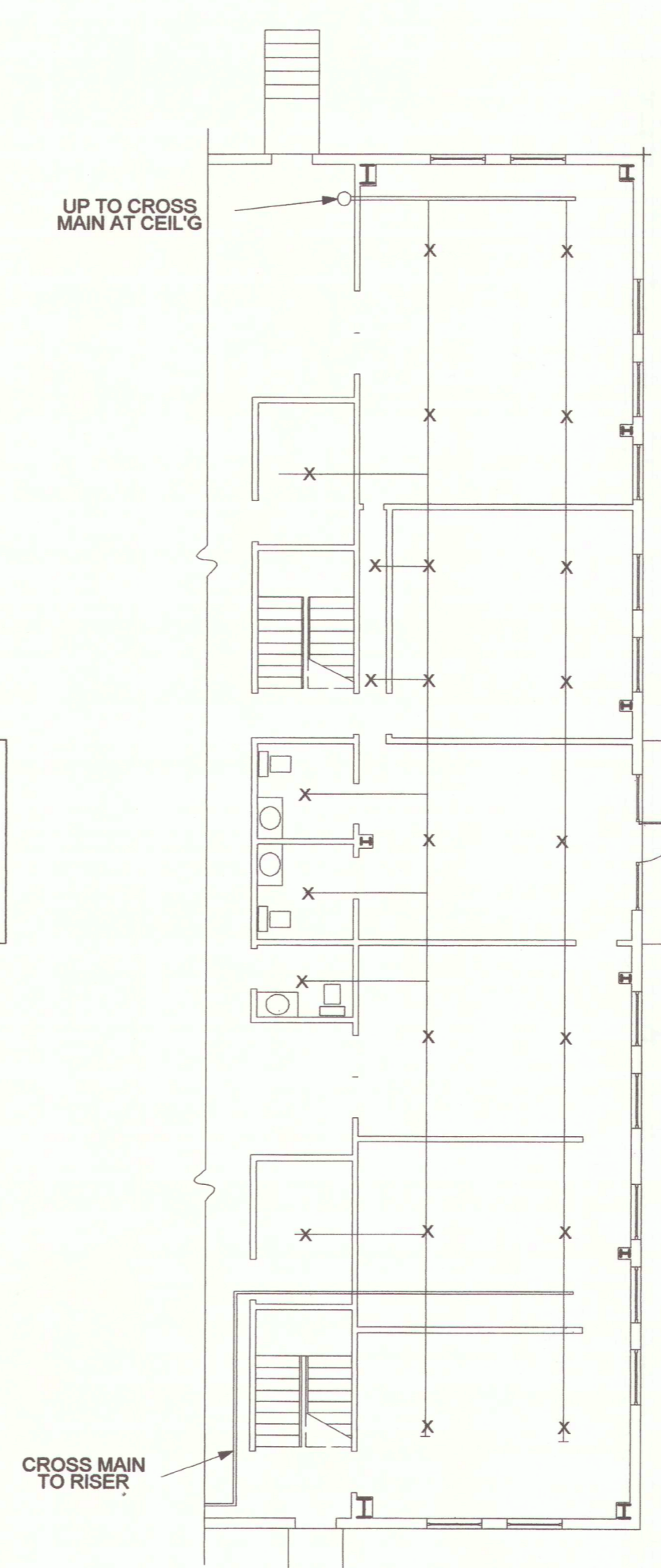
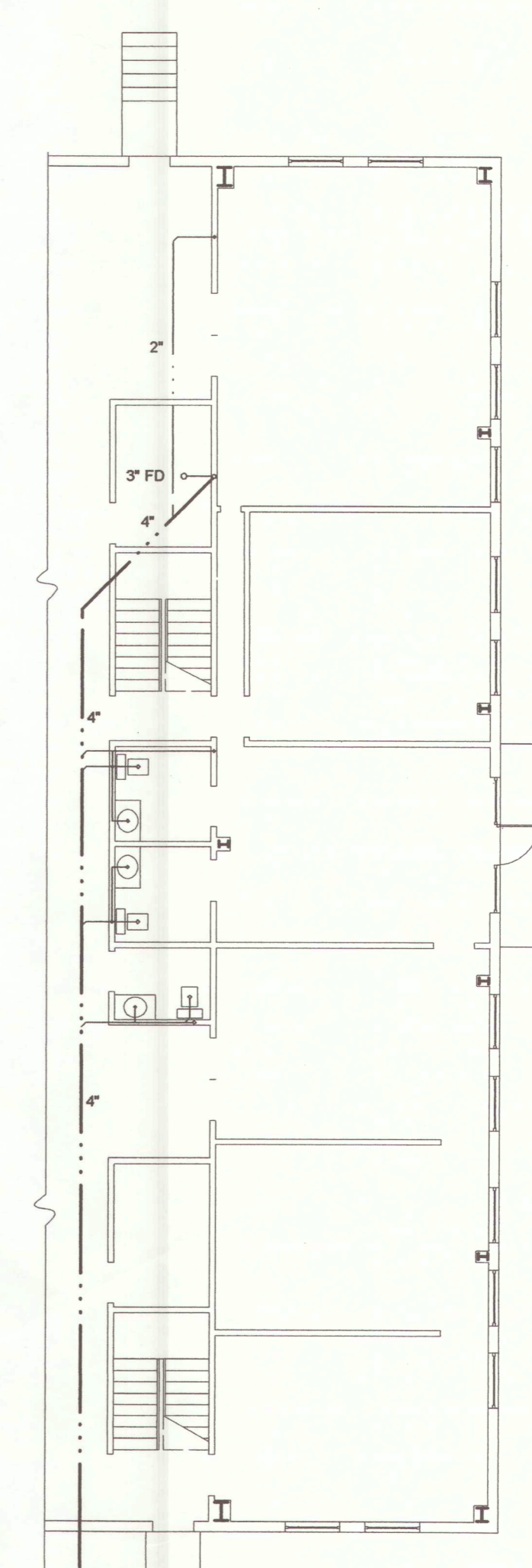


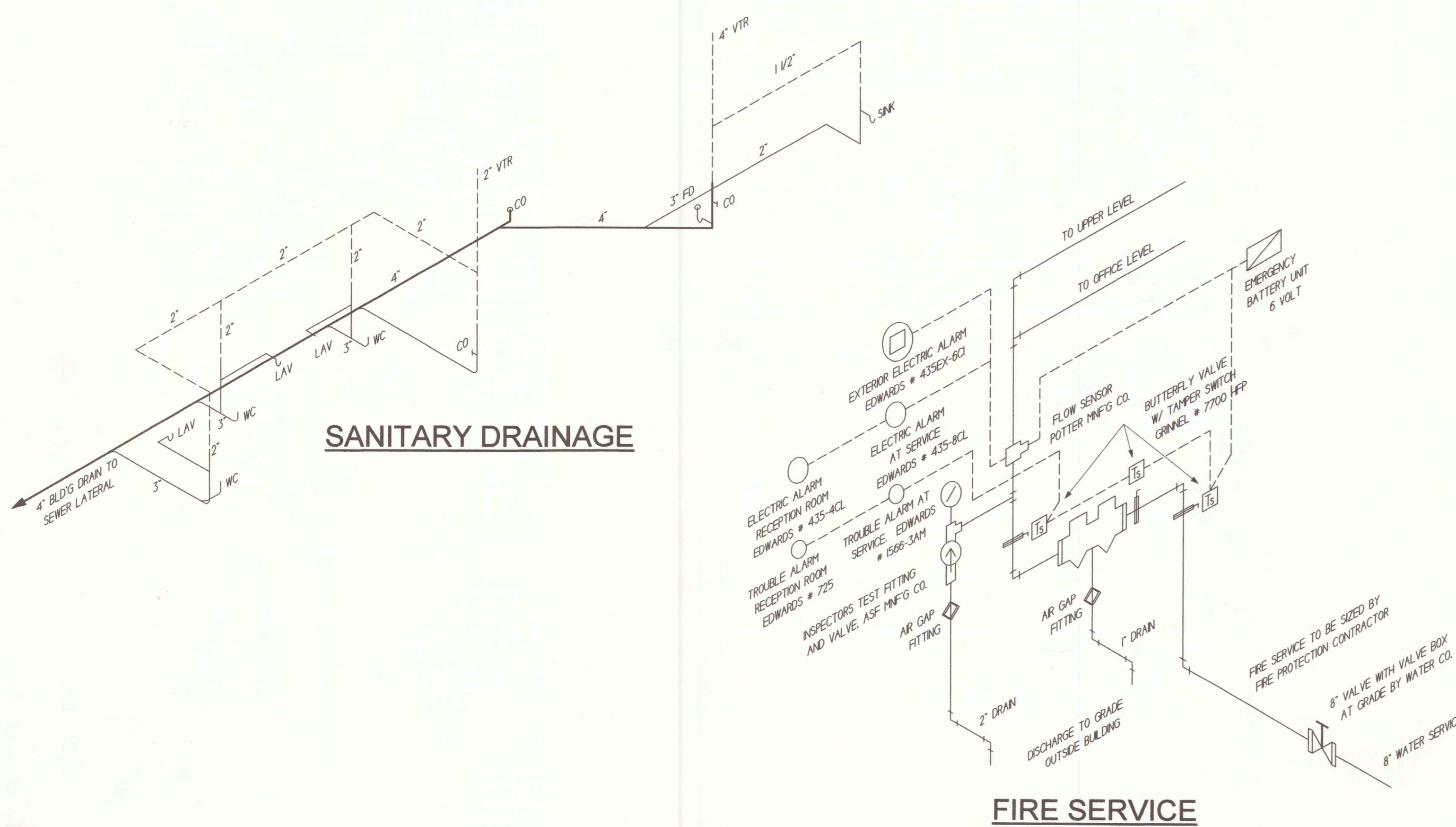
**WAREHOUSE AND MEZZANINE
SPRINKLER SYSTEM**
SCALE: 3/32" = 1' - 0"



**OFFICE LEVEL
SPRINKLER SYSTEM**
SCALE: 3/32" = 1' - 0"

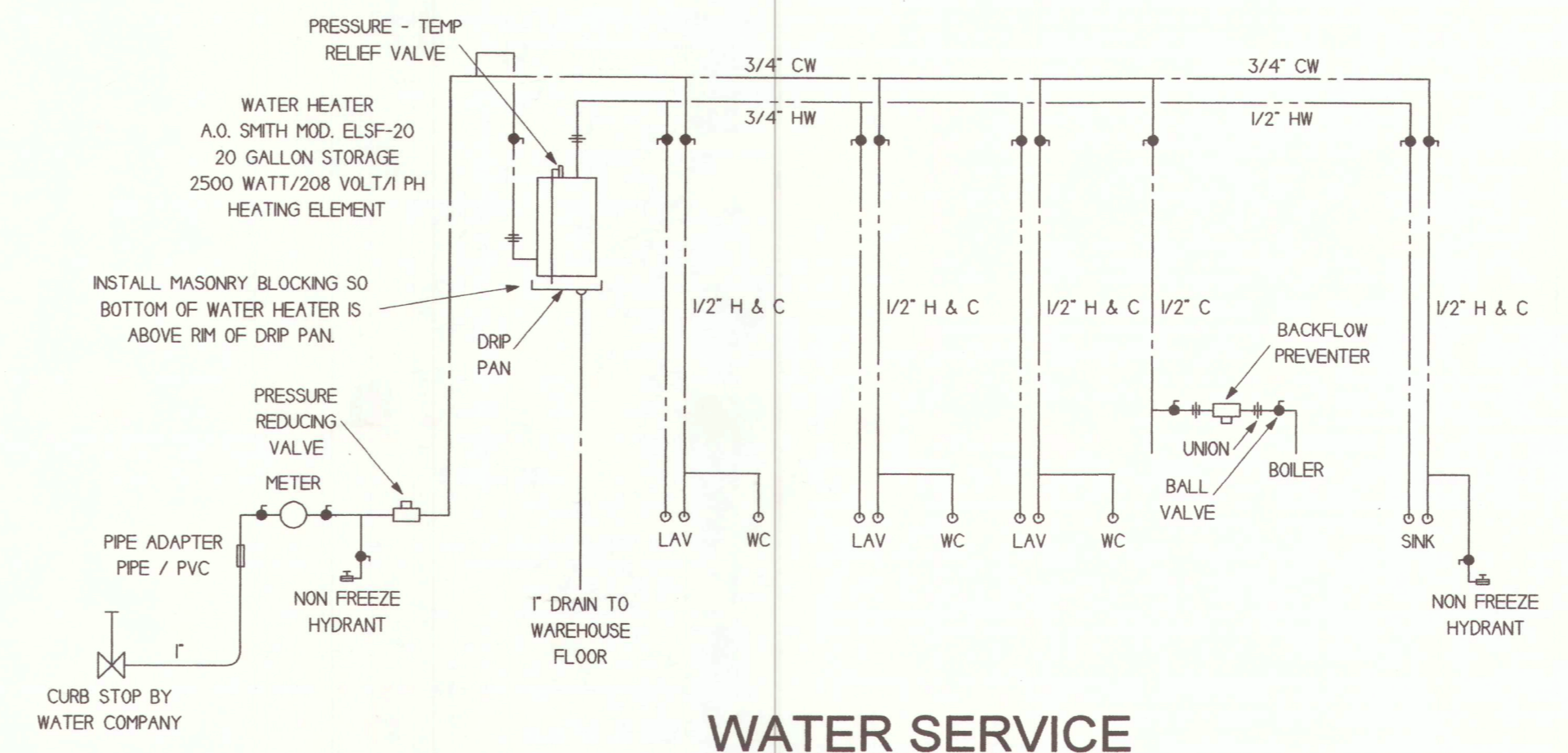


PLUMBING PLAN
SCALE: 3/32" = 1' - 0"



SANITARY DRAINAGE

FIRE SERVICE

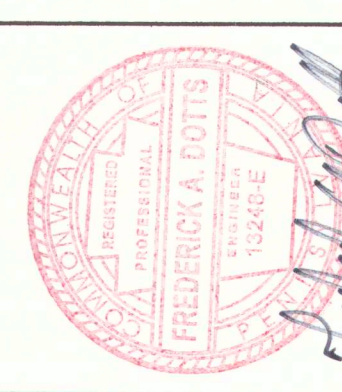


WATER SERVICE

- GENERAL NOTES:**
1. THE FIRE SYSTEM DEPICTED IS A SUGGESTED ARRANGEMENT OF MAINS, RISERS, SPRINKLERS, FIRE VALVE CABINETS, EXTINGUISHERS, AND PIPING AND HAVE BEEN COORDINATED WITH OTHER TRADES. THE FIRE PROTECTION CONTRACTOR MAY AND SHALL ALTER THE LOCATION OF ANY ELEMENT NECESSARY TO MEET THE DESIGN AND CODE REQUIREMENTS.
 2. ALL SPRINKLER HEADS AND PIPING SHALL BE LOCATED ABOVE THE LIGHT FIXTURES.
 3. COORDINATE INSTALLATION OF SPRINKLER SYSTEM W/ ALL OTHER TRADES.
 4. FIRE SPRINKLER HEADS IN WAREHOUSE AND MEZZANINE SHALL BE PENDENT TYPE.
 5. FIRE SPRINKLER HEADS LOCATED IN SUSPENDED OR GWB CEILINGS SHALL BE FLUSH PENDENT TYPE.

REVISIONS:
12/28/01
02/04/02
02/28/02

CHESHIRE GROUP
CONTRACTORS & ENGINEERS
1084 EAST LANCASTER AVE., ROSEMONT, PA
PHONE 610-525-6475 + FAX 610-525-6477



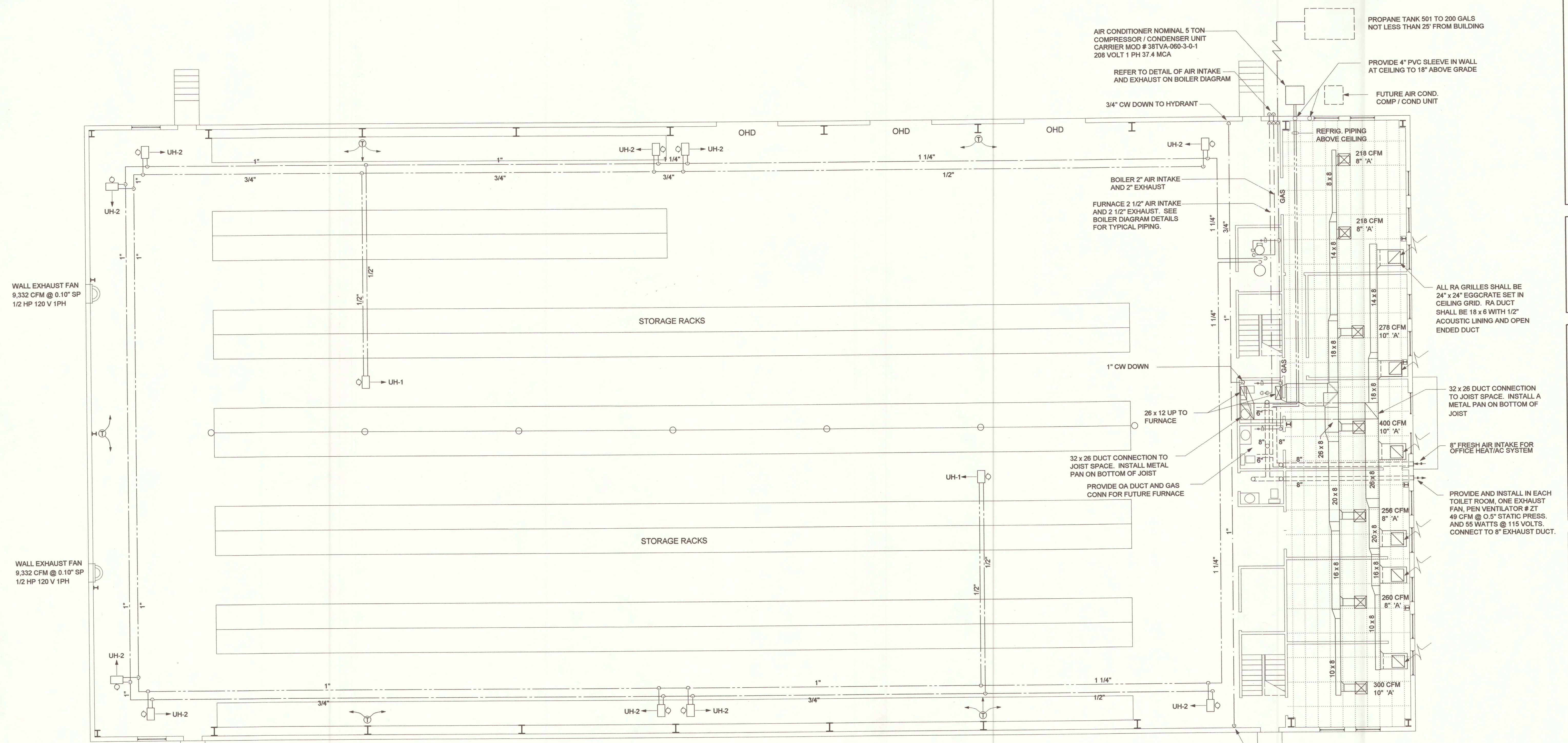
**CONSOLIDATED ENGINEERS
AND CONSULTANTS, INC.**
1543 SAINT MATTHEWS ROAD
CHESTER SPRINGS, PA
TELEPHONE 610-827-9311

**PENNCORA PRODUCTIONS
NEW OFFICE & WAREHOUSE**
PROVIDENCE BUSINESS PARK
AT OAKS - BUILDING "F"
UPPER PROVIDENCE TWP., PA

**OFFICE & WAREHOUSE
FIRE PROTECTION**

DATE: 12/14/01
DWN / CK: WB / LA
SCALE: AS NOTED

ME4



**FLOOR PLAN OF WAREHOUSE & OFFICES
 HEATING, VENTILATION & AIR CONDITIONING**

SCALE: 1/8" = 1' - 0"

REVISIONS:
 12/28/01
 02/04/02
 02/28/02

CHESHIRE GROUP
CONTRACTORS & ENGINEERS
 1084 EAST LANCASTER AVE., ROSEMONT, PA
 PHONE 610-525-6475 + FAX 610-525-6477



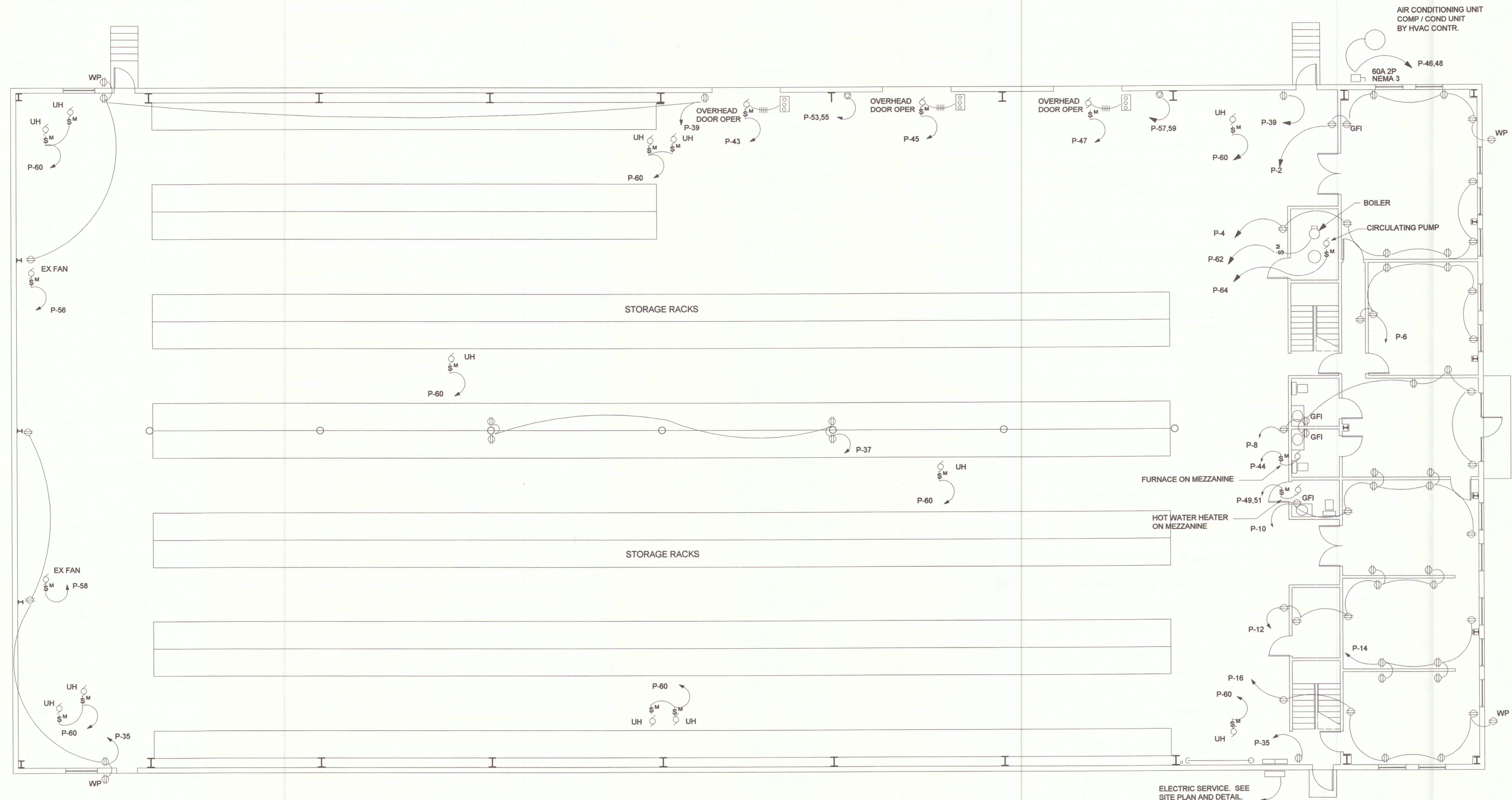
**CONSOLIDATED ENGINEERS
 AND CONSULTANTS, INC.**
 1543 SAINT MATTHEWS ROAD
 CHESTER SPRINGS, PA
 TELEPHONE 610-827-9311

**PENNCORA PRODUCTIONS
 NEW OFFICE & WAREHOUSE**
 PROVIDENCE BUSINESS PARK
 AT OAKS - BUILDING "F"
 UPPER PROVIDENCE TWP., PA

**OFFICE & WAREHOUSE
 ELECTRIC POWER
 SYSTEM**

DATE: 12/14/01
 DWN / CK: WB / LA
 SCALE: AS NOTED

ME3



PANEL "P" SECTION 1
 400 AMPS 120 / 208 VOLT 3 PHASE 60 HZ 4 WIRE

WATTS	DESCRIPTION	WIRE	CB	WIRE	DESCRIPTION	WATTS
1660	LTG WAREHSE NITE N	2#10	20	1	RM 108	1692
1660	LTG WAREHSE NITE S	2#10	20	3	RM 108	1692
1660	LTG WAREHSE ROW 1	2#10	20	5	RM 106, 110, 111	1692
1660	LTG WAREHSE ROW 2	2#10	20	7	RM 106, 105	1692
1660	LTG WAREHSE ROW 3	2#10	20	9	RM 105, 104	1692
1660	LTG WAREHSE ROW 4	2#10	20	11	RM 104, 103	1692
1660	LTG WAREHSE ROW 5	2#10	20	13	RM 103	1692
1660	LTG WAREHSE ROW 6	2#10	20	15	RM 103	1692
1750	LTG 101,103,104,105,111,110,109	2#10	20	17	SPACE	
992	LTG 106,107,108,CORR BOILER RM	2#10	20	19	SPACE	
1500	LTG 106,107	2#10	20	21	SPACE	
1350	LTG 206,205 (FUTURE)	2#10	20	23	SPACE	
756	LTG 200,204 (FUTURE)	2#10	20	25	SPACE	
1500	LTG 200,204 (FUTURE)	2#10	20	27	SPACE	
	SPACE			29	SPACE	
	SPACE			31	SPACE	
	SPACE			33	SPACE	
	SPACE			35	SPACE	
900	WRHSE WEST	2#10	20	37	SPACE	
720	WRHSE CENTER COL	2#10	20	39	SPACE	
900	WRHSE WEST	2#10	20	41	SPACE	
1290	EXTERIOR LTG (SN-1)	2#10	20	43	EMRG LIGHTING UNITS	1692

500 MCM
 500 MCM
 500 MCM
 500 MCM

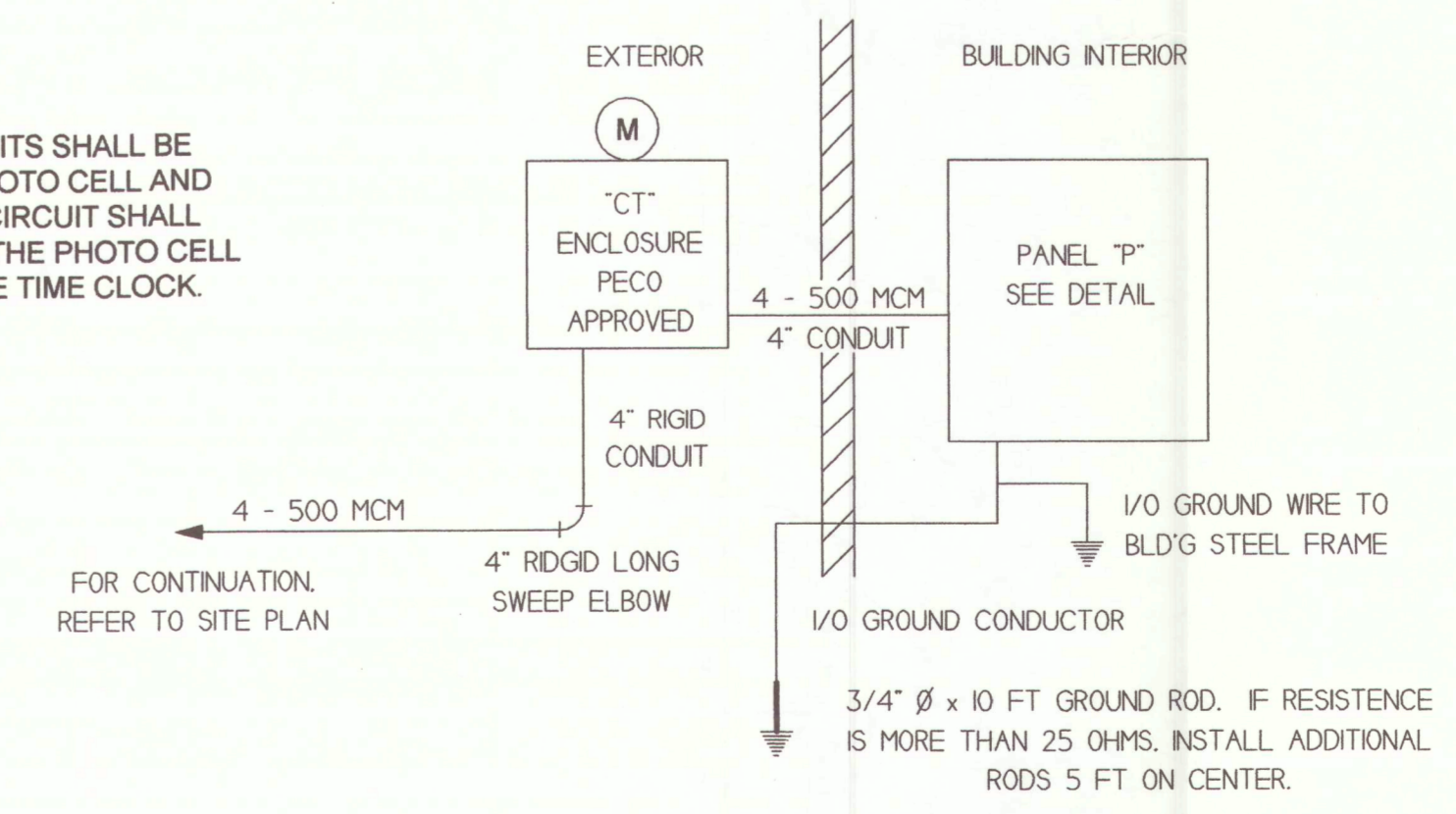
PANEL "60" SECTION 2
 400 AMPS 120 / 208 VOLT 3 PHASE 60 HZ 4 WIRE

WATTS	DESCRIPTION	WIRE	CB	WIRE	DESCRIPTION	WATTS
1127	OH DOOR OPER	2#10	20	45	FURNACE	1692
1127	OH DOOR OPER	2#10	20	47	FURNACE	1692
1127	OH DOOR OPER	2#10	20	49	FURNACE	1692
2500	WATER HEATER	2#10	20	51	EXH FAN	1127
9350	WELD OUTLET	2#6	50	53	UNIT HEATERS	126
9350	WELD OUTLET	2#6	50	55	BOILER	1440
	SPACE			57	CIRC PUMP	1127
	SPACE			59	SPACE	
	SPACE			61	SPACE	
	SPACE			63	SPACE	
	SPACE			65	SPACE	
	SPACE			67	SPACE	
	SPACE			69	SPACE	
	SPACE			71	SPACE	
	SPACE			73	SPACE	
	SPACE			75	SPACE	
	SPACE			77	SPACE	
	SPACE			79	SPACE	
	SPACE			81	SPACE	
	SPACE			83	SPACE	

400 AMP MAIN LUGS ONLY

**WAREHOUSE AND OFFICE
 POWER SYSTEM**
 SCALE: 1/8" = 1' - 0"

SHEET NOTES:
 SN-1 EXTERIOR LIGHTING CIRCUITS SHALL BE CIRCUITED THROUGH A PHOTO CELL AND SEVEN DAY TIME CLOCK. CIRCUIT SHALL BE ENERGIZED THROUGH THE PHOTO CELL AND DE-ENERGIZED BY THE TIME CLOCK.



ELECTRIC SERVICE

REVISIONS:
 12/28/01
 02/04/02
 02/28/02