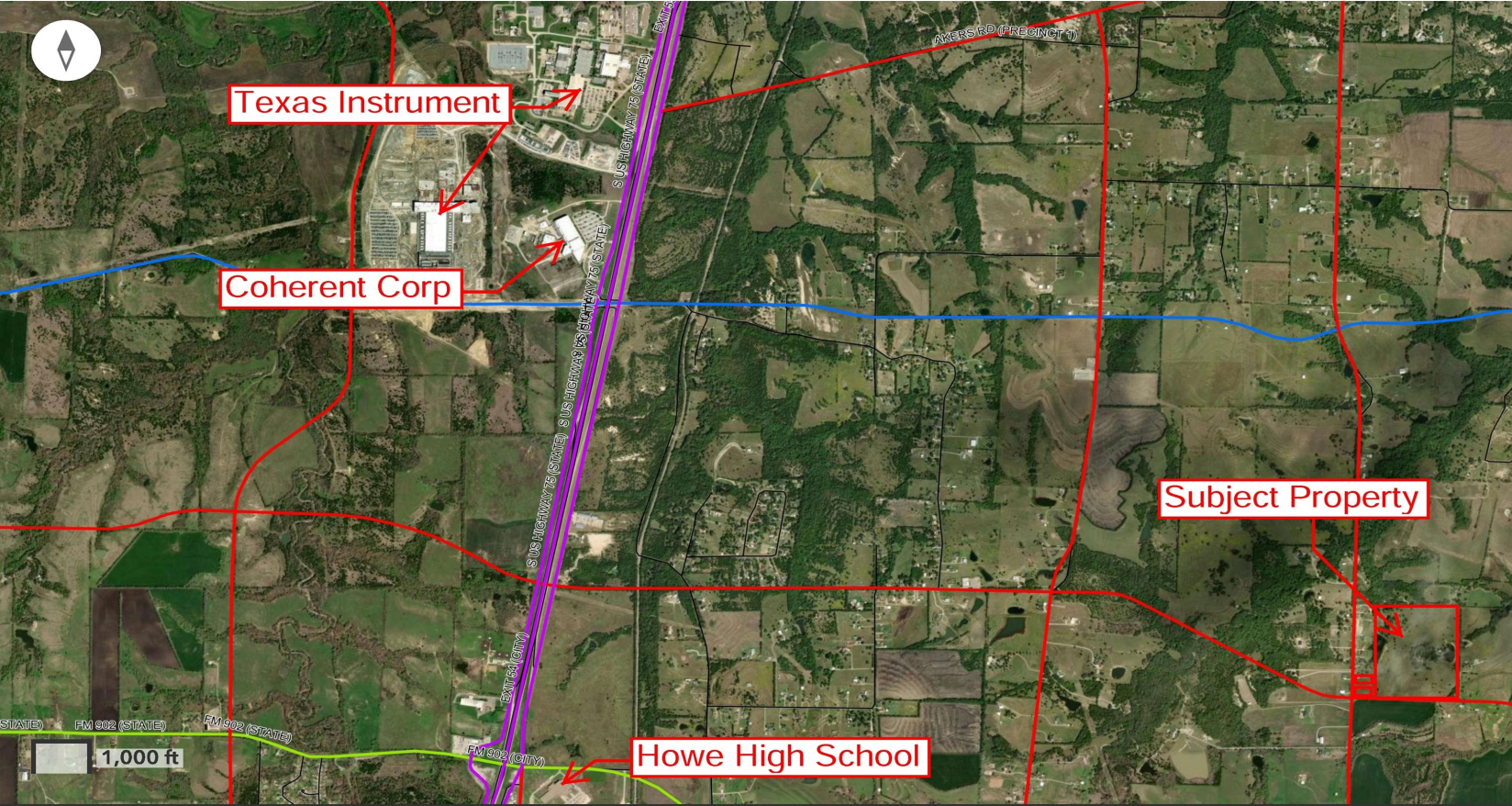


# 55.22 Acres on Harrell Rd, Howe



Grayson County Public Interactive Map



Maxar

## Grayson County MPO Thoroughfare Plan

Freeway Major Arterial Minor Arterial Principal Arterial Tollway

999 Harrell Road  
Howe, TX 75459

**Ari Besefki**  
Opportune Commercial, LLC  
Managing Partner  
(214) 662-1941  
ari@opportunecre.com



# 55.22 Acres on Harrell Rd, Howe

## CONTENTS

- 01 **Executive Summary**  
Investment Summary
- 02 **Location**  
Location Summary
- 03 **Demographics**  
Demographics

*Exclusively Marketed by:*

**Ari Besefki**  
Opportune Commercial, LLC  
Managing Partner  
(214) 662-1941  
ari@opportunecre.com



Brokerage License No.: 9007753  
<https://www.opportunecre.com/>

# 55.22 ACRES ON HARRELL RD, HOWE

01

Executive Summary

Investment Summary

---

## OFFERING SUMMARY

---

ADDRESS	999 Harrell Road Howe TX 75459
COUNTY	Grayson
MARKET	Sherman
SUBMARKET	Howe
PRICE	\$2,225,000
LAND ACRES	55.22
OWNERSHIP TYPE	Fee Simple
ZONING TYPE	Agri, Residential

---

DEMOGRAPHICS	1 MILE	3 MILE	5 MILE
2025 Population	182	3,057	10,184
2025 Median HH Income	\$130,337	\$99,695	\$100,576
2025 Average HH Income	\$150,961	\$126,929	\$126,117

---

-

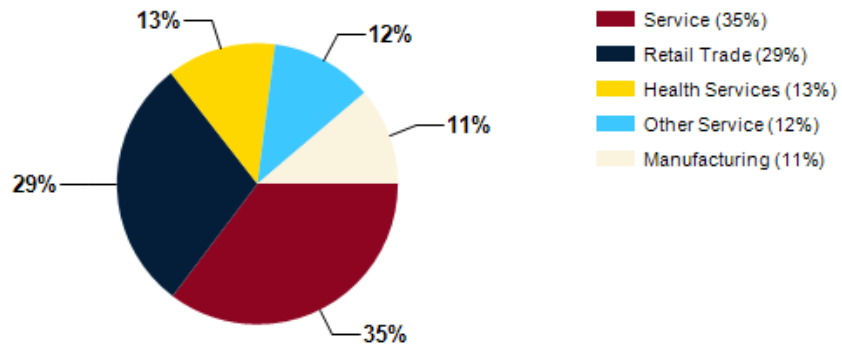
# 55.22 ACRES ON HARRELL RD, HOWE

02

Location

Location Summary

## Major Industries by Employee Count



# 55.22 ACRES ON HARRELL RD, HOWE

03

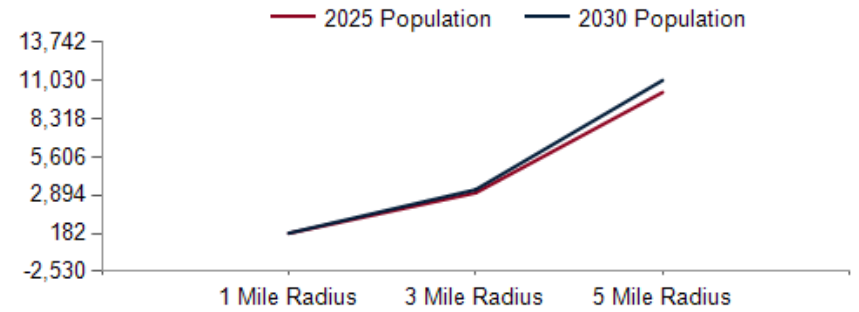
Demographics

Demographics

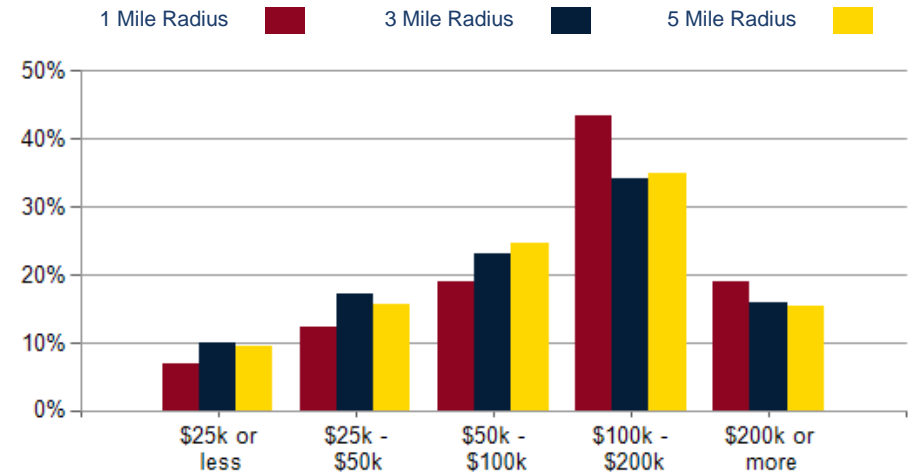
POPULATION	1 MILE	3 MILE	5 MILE
2000 Population	143	2,249	7,080
2010 Population	167	2,471	7,915
2025 Population	182	3,057	10,184
2030 Population	196	3,284	11,030
2025-2030: Population: Growth Rate	7.45%	7.20%	8.05%

2025 HOUSEHOLD INCOME	1 MILE	3 MILE	5 MILE
less than \$15,000	2	49	168
\$15,000-\$24,999	3	67	194
\$25,000-\$34,999	4	98	298
\$35,000-\$49,999	5	105	297
\$50,000-\$74,999	9	170	575
\$75,000-\$99,999	5	102	367
\$100,000-\$149,999	15	195	725
\$150,000-\$199,999	17	207	610
\$200,000 or greater	14	186	585
Median HH Income	\$130,337	\$99,695	\$100,576
Average HH Income	\$150,961	\$126,929	\$126,117

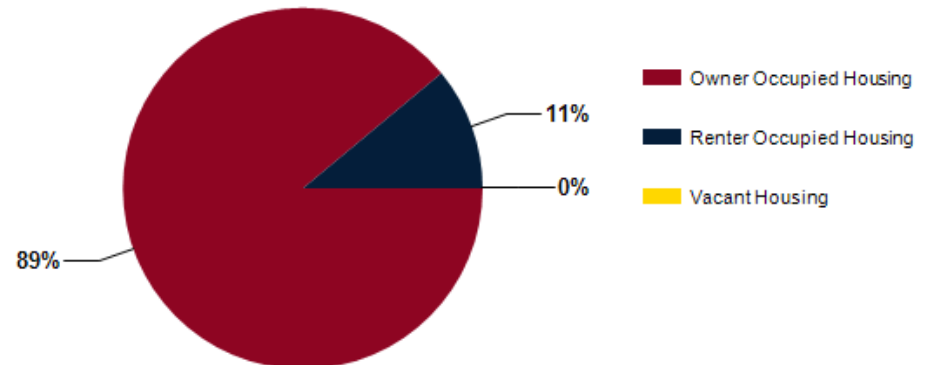
HOUSEHOLDS	1 MILE	3 MILE	5 MILE
2000 Total Housing	51	856	2,744
2010 Total Households	62	884	2,851
2025 Total Households	72	1,179	3,819
2030 Total Households	79	1,284	4,191
2025 Average Household Size	2.51	2.59	2.66
2025-2030: Households: Growth Rate	9.35%	8.60%	9.40%



2025 Household Income



2025 Own vs. Rent - 1 Mile Radius



Source: esri

2025 POPULATION BY AGE	1 MILE	3 MILE	5 MILE
2025 Population Age 30-34	9	182	637
2025 Population Age 35-39	9	187	658
2025 Population Age 40-44	12	213	715
2025 Population Age 45-49	10	163	559
2025 Population Age 50-54	12	194	633
2025 Population Age 55-59	14	199	632
2025 Population Age 60-64	14	202	647
2025 Population Age 65-69	15	212	626
2025 Population Age 70-74	9	129	451
2025 Population Age 75-79	9	119	348
2025 Population Age 80-84	6	81	251
2025 Population Age 85+	3	46	145
2025 Population Age 18+	148	2,354	7,771
2025 Median Age	46	41	39
2030 Median Age	46	41	40

2025 INCOME BY AGE	1 MILE	3 MILE	5 MILE
Median Household Income 25-34	\$150,000	\$93,866	\$99,753
Average Household Income 25-34	\$152,398	\$119,594	\$119,402
Median Household Income 35-44	\$161,791	\$96,336	\$102,594
Average Household Income 35-44	\$168,925	\$129,985	\$131,609
Median Household Income 45-54	\$158,060	\$132,967	\$125,640
Average Household Income 45-54	\$188,457	\$151,128	\$150,209
Median Household Income 55-64	\$163,988	\$134,626	\$121,632
Average Household Income 55-64	\$184,110	\$152,485	\$151,569
Median Household Income 65-74	\$118,930	\$101,866	\$92,275
Average Household Income 65-74	\$142,432	\$123,748	\$116,566
Average Household Income 75+	\$99,735	\$88,494	\$84,096

