



# Sublease Opportunity

9468 N Macrum Ave  
Portland, OR 97203

## Features:

- Fenced and secured yard
- Minutes from I5 freeway
- Clear span structure
- 3 drive-ins at grade
- 24' building height
- Off street parking – 6 lined spaces
- +/- 1 AC of fenced and secured yard
- Located in St. Johns neighborhood

## Space Profile:

<b>Total AC</b>	1.28	<b>Availability</b>	Immediate
<b>Building SF</b>	13,200 (~2,400 Office)	<b>Lease Term</b>	Thru March 2027
<b>Office SF</b>	TBD	<b>Submarket</b>	Northeast
<b>Lease Rate</b>	Call for Rate	<b>Built</b>	1957

## Contact:



**Summer Blasquez**  
503.334.0746  
sblasquez@cresa.com

Yard



Office



# Sublease Opportunity

9468 N Macrum Ave

Gated Entrance

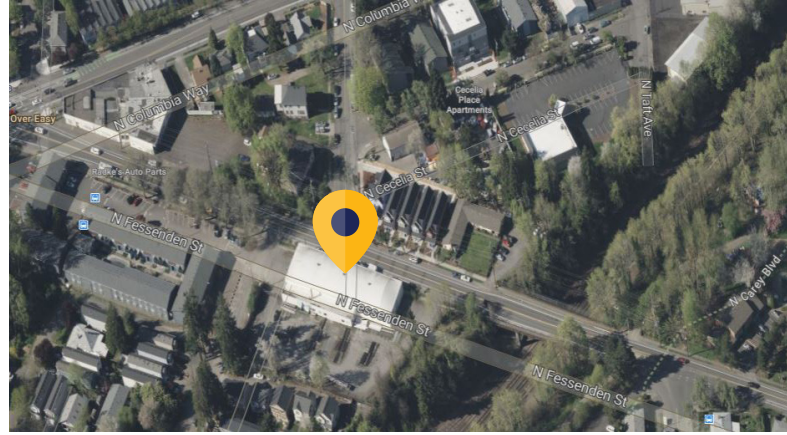
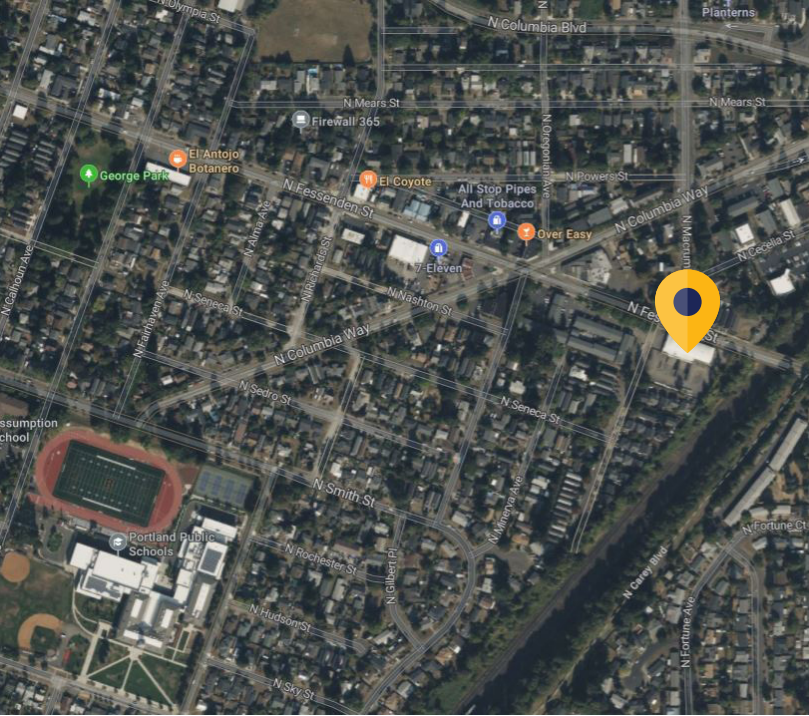


Shop



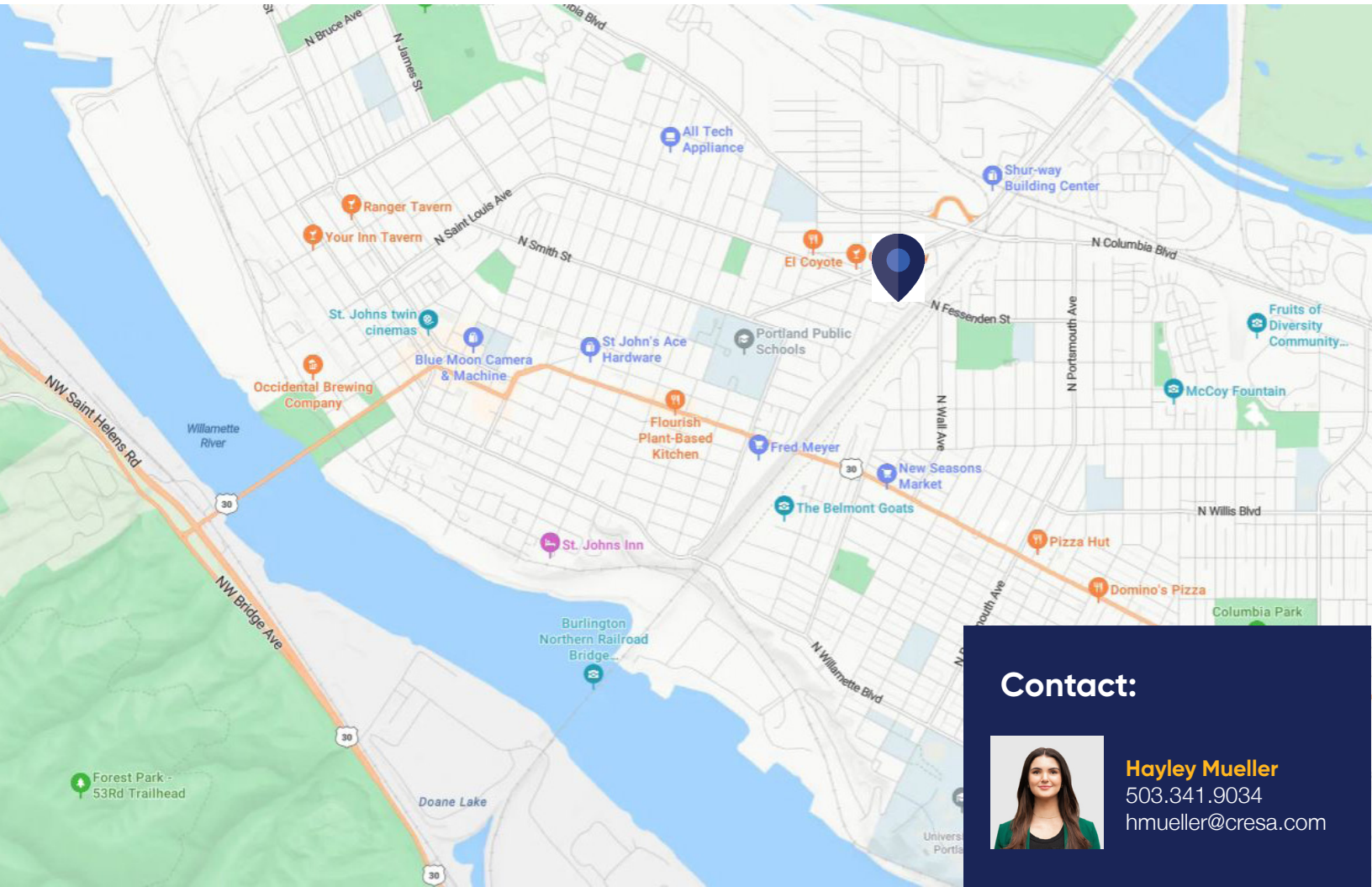
Warehouse





## Sublease Opportunity

9468 N Macrum Ave



### Contact:



**Hayley Mueller**  
503.341.9034  
hmueller@cresa.com