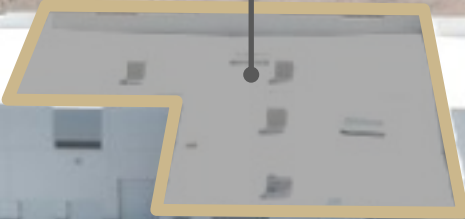




AVAILABLE

BRAND NEW CONSTRUCTION IN WEST HENDERSON

±15,609
TOTAL SF



Diamond Bermuda

LAST BUILDING AVAILABLE - READY FOR OCCUPANCY!

3780 E. DALE AVENUE

HENDERSON, NV 89044



MIKE DE LEW, SIR

(702) 469-6496

MDelew@rcadvs.com

NV-RE License: S.0025952

PAUL HOYT, SIR

(702) 782-3306

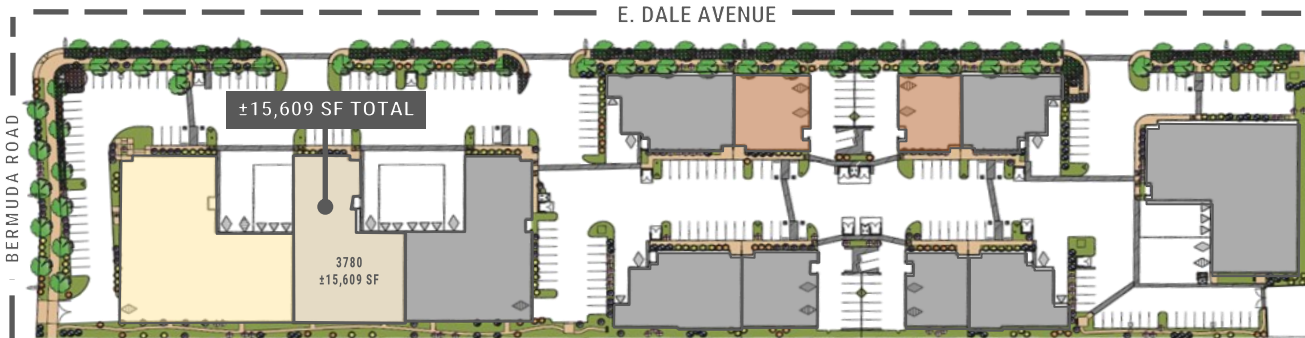
PHoyt@rcadvs.com

NV-RE License: BS.0144760

3780 E. DALE AVENUE | HENDERSON, NV 89044

Diamond Bermuda

AVAILABLE



- ±15,609 SF Total
- ±1,620 SF Office
- ±13,989 SF Warehouse w/ LED Lighting
- One (1) - 14' x 16' Grade Level Loading Door
- Two (2) - 9' x 10' Dock High Doors
- 800 Amps, 277/480 Volt, 3-Phase Power
- ±29' - ±32' Clear Height
- ESFR Fire Sprinkler System
- R-38 Roof Insulation w/ Black Scrim
- Twenty (20) - Parking Spaces
- ±33' x ±48' Typical Column Spacing
- 70' Concrete Truck Apron
- Situated on ±0.90 Acres (APN: 191-10-311-017)
- I-P Zoning: Industrial Park - City of Henderson



PRICING INFORMATION:

FOR LEASE (NNN):

Base Rent = \$1.50/SF + NNN Fee = \$0.23/SF

FOR SALE (\$348/SF):

\$5,431,932

MIKE DE LEW, SIOR®

(702) 469-6496

MDelew@rcadv.com

NV-RE License: S.0025952

PAUL HOYT, SIOR®

(702) 782-3306

PHoyt@rcadv.com

NV-RE License: BS.0144760

REALCOMM ADVISORS

770 E. Warm Springs Road
Suite 120

Las Vegas, NV 89119

(702) 515-1010

www.rcadv.com



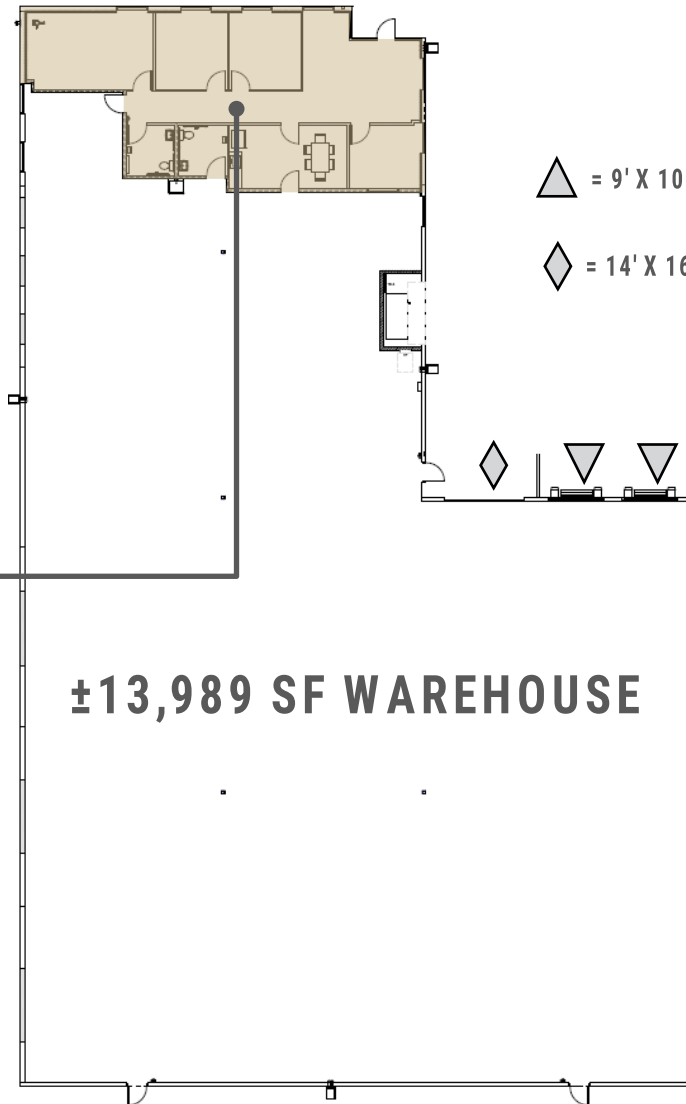
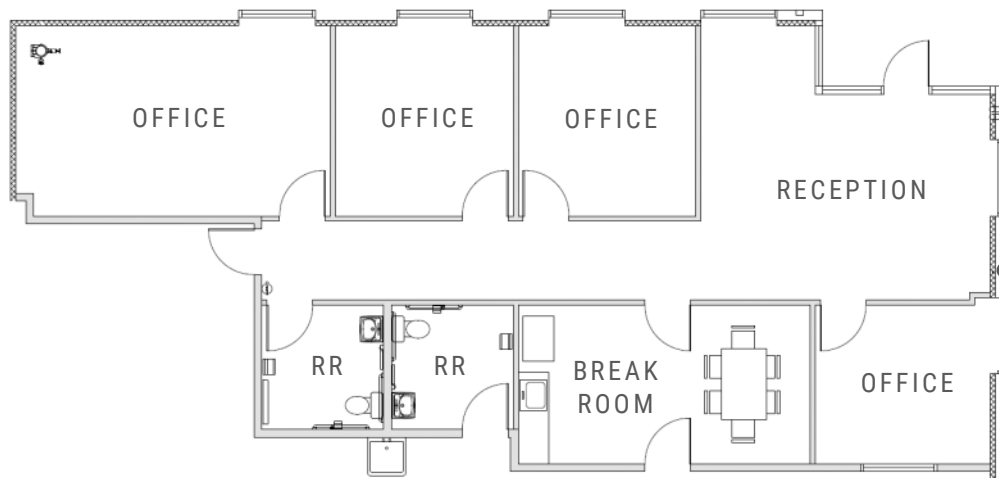
3780 E. DALE AVENUE | HENDERSON, NV 89044

Diamond Bermuda

AVAILABLE

±15,609 SF TOTAL

±1,620 SF OFFICE



▲ = 9' X 10' DOCK HIGH DOOR
◆ = 14' X 16' GRADE LEVEL DOOR

±13,989 SF WAREHOUSE

- RECEPTION
- FOUR (4) PRIVATE OFFICES
- BREAK ROOM
- TWO (2) RESTROOMS



MIKE DE LEW, SIOR®

(702) 469-6496

MDelew@rcadv.com

NV-RE License: S.0025952

PAUL HOYT, SIOR®

(702) 782-3306

PHoyt@rcadv.com

NV-RE License: BS.0144760

REALCOMM ADVISORS
770 E. Warm Springs Road
Suite 120
Las Vegas, NV 89119
(702) 515-1010
www.rcadv.com



3780 E. DALE AVENUE | HENDERSON, NV 89044

 Diamond Bermuda

AVAILABLE

DIAMOND BERMUDA INDUSTRIAL CENTER

Is a Twelve (12) Building Institutional Quality, Concrete Tilt-Up Industrial Project Totaling ±128,680 Square Feet. Situated in the Heart of West Henderson, Diamond Bermuda Industrial Center is Located at the Southeast Corner of Dale Avenue & Bermuda Road, just North of Volunteer Boulevard & West of Raiders Way.

The St. Rose & I-15 Freeway Interchange is Located within 1.6 Miles, and the Location Offers Close Proximity to an Abundance of Amenities & Services.



MIKE DE LEW,  SIOR®

(702) 469-6496

MDelew@rcadvs.com

NV-RE License: S.0025952

PAUL HOYT,  SIOR®

(702) 782-3306

PHoyt@rcadvs.com

NV-RE License: BS.0144760

REALCOMM ADVISORS
770 E. Warm Springs Road
Suite 120
Las Vegas, NV 89119
(702) 515-1010
www.rcadvs.com



3780 E. DALE AVENUE | HENDERSON, NV 89044

Diamond Bermuda

AVAILABLE



Information is subject to change at any time. The information provided has been obtained from sources believed reliable. While we do not doubt its accuracy, we have not verified it and make no guarantee, warranty or representation about it. It is your responsibility to independently confirm its accuracy & completeness. You and your advisors should conduct a careful, independent investigation of the property to determine to your satisfaction the suitability of the property for your needs.

MIKE DE LEW, SIOR®

(702) 469-6496

MDelew@rcadv.com

NV-RE License: S.0025952

PAUL HOYT, SIOR®

(702) 782-3306

PHoyt@rcadv.com

NV-RE License: BS.0144760

REALCOMM ADVISORS

770 E. Warm Springs Road
Suite 120

Las Vegas, NV 89119

(702) 515-1010

www.rcadv.com

