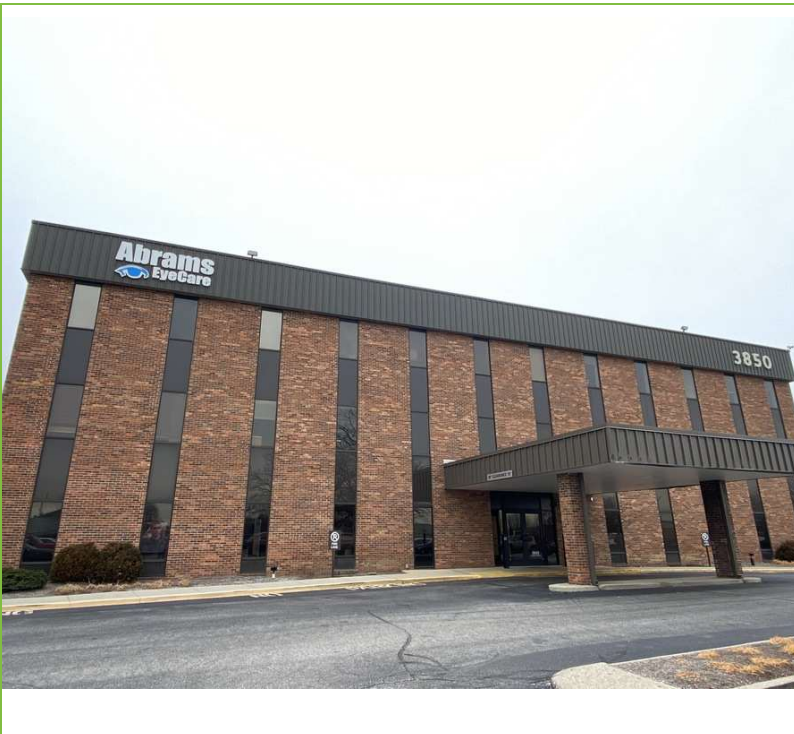


3850 Shore Drive

Indianapolis, IN 46254

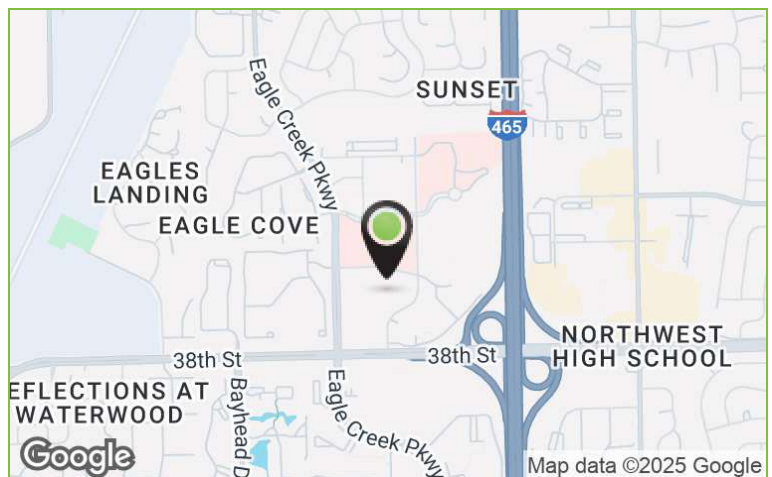


Medical Office

1,332 - 2,099 SF

PROPERTY HIGHLIGHTS

- Recently renovated common areas
- Easy access to I-465
- Owner occupied
- Ample Parking
- Exterior signage available



LOCATION DESCRIPTION

Office and Medical Office Space well situated on the west side of Indianapolis, outside the I-465 loop. Located in the well maintained Eagle Highlands Professional Center.

Mike Short
Vice President
Mike@alopg.com
C: 317.800.4664

ALO Property Group
9075 N. Meridian St., Ste. 175
Indianapolis, IN 46260
O: 317.853.7500
www.alopg.com



3850 Shore Drive

Indianapolis, IN 46254

Suite 300 - 1,332 SF



Mike Short
Vice President
Mike@alopg.com
C: 317.800.4664

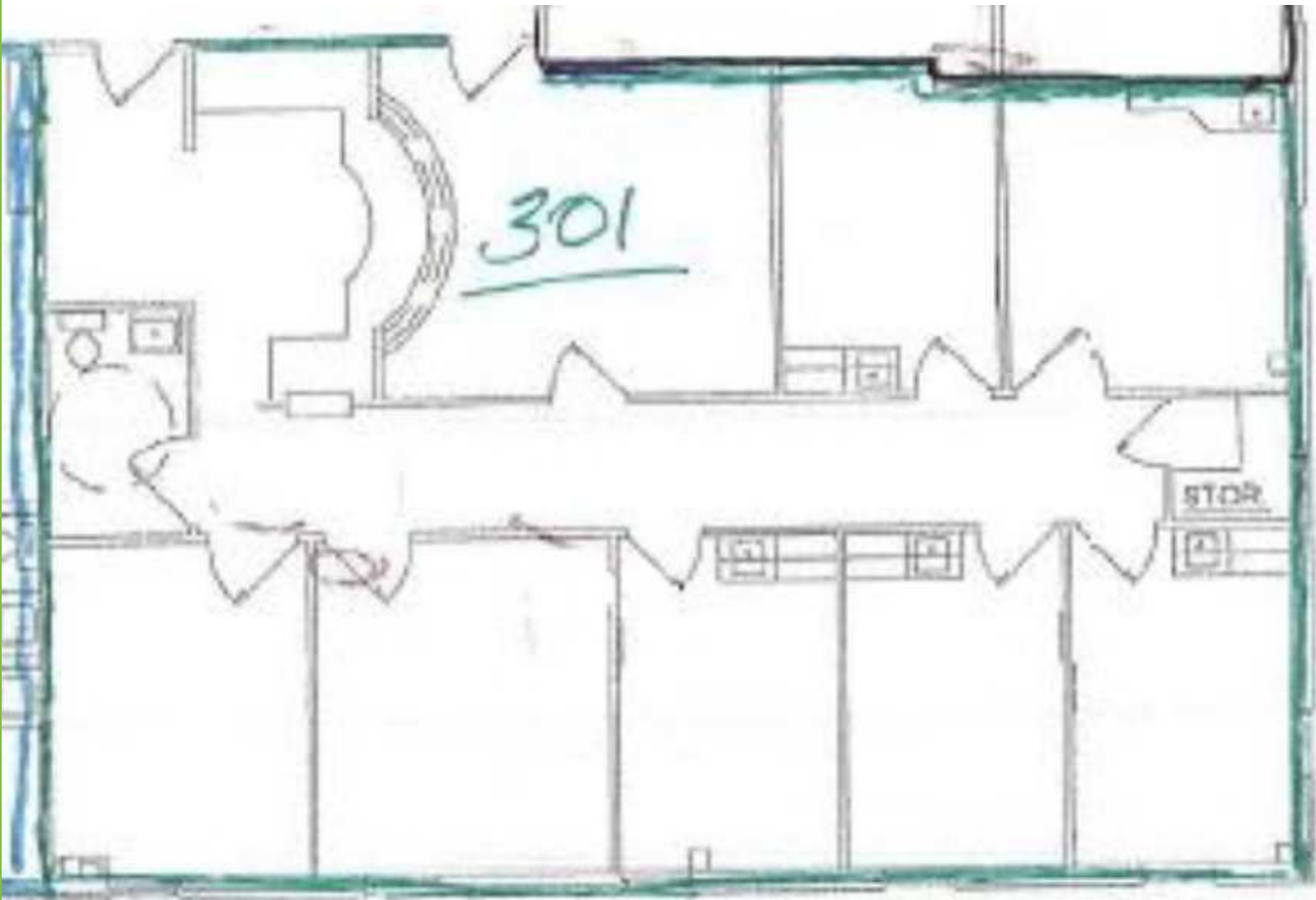
ALO Property Group
9075 N. Meridian St., Ste. 175
Indianapolis, IN 46260
O: 317.853.7500
www.alopg.com



3850 Shore Drive

Indianapolis, IN 46254

Suite 301 - 1,835 SF



Mike Short
Vice President
Mike@alopg.com
C: 317.800.4664

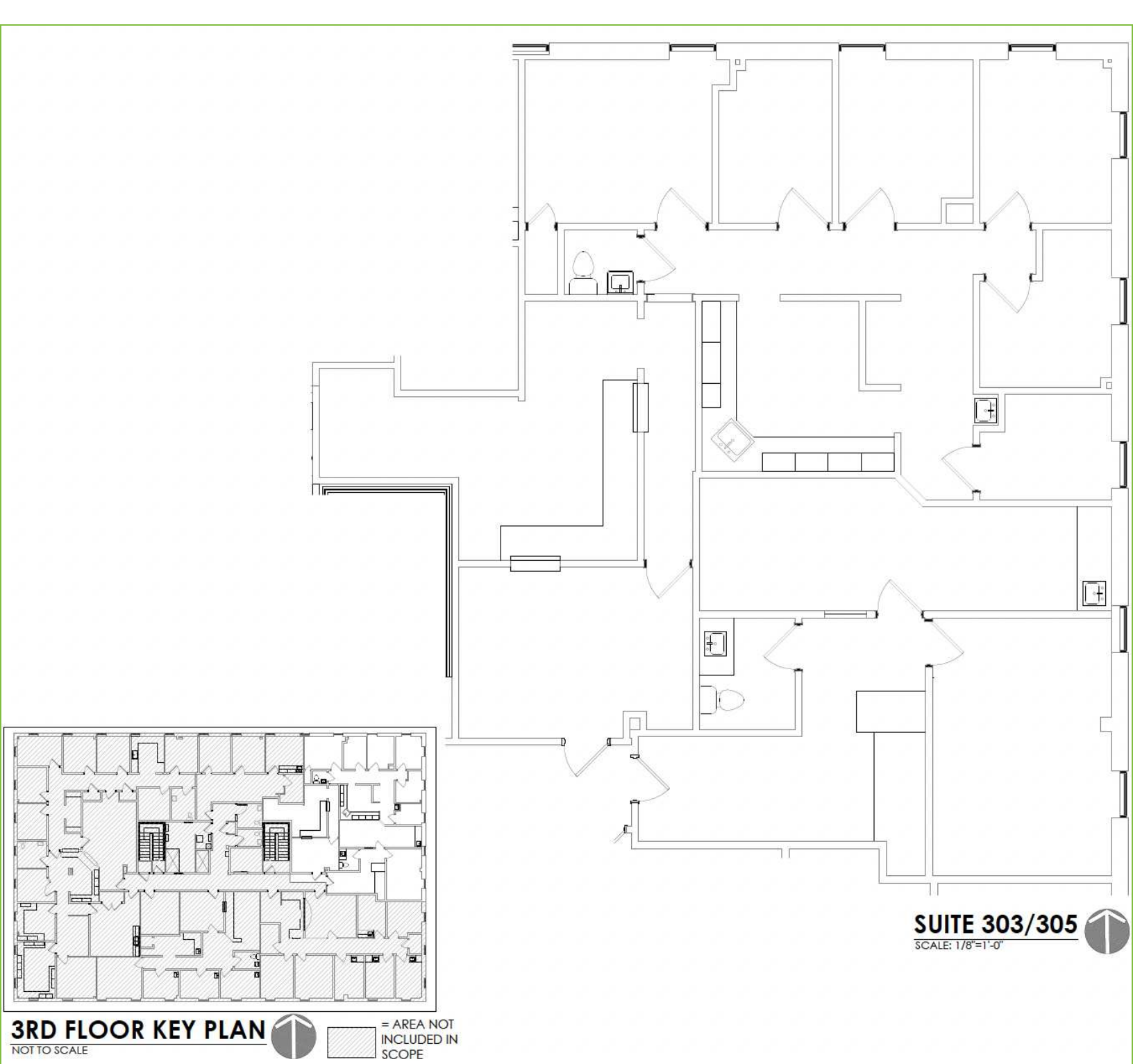
ALO Property Group
9075 N. Meridian St., Ste. 175
Indianapolis, IN 46260
O: 317.853.7500
www.alopg.com



3850 Shore Drive

Indianapolis, IN 46254

Suite 305 - 2,099 SF



SUITE 303/305

SCALE: 1/8"=1'-0"



3RD FLOOR KEY PLAN

NOT TO SCALE



▨ = AREA NOT INCLUDED IN SCOPE

Mike Short
Vice President
Mike@alopg.com
C: 317.800.4664

ALO Property Group
9075 N. Meridian St., Ste. 175
Indianapolis, IN 46260
O: 317.853.7500
www.alopg.com



3850 Shore Drive

Indianapolis, IN 46254

Photos



Mike Short
Vice President
Mike@alopg.com
C: 317.800.4664

ALO Property Group
9075 N. Meridian St., Ste. 175
Indianapolis, IN 46260
O: 317.853.7500
www.alopg.com

