



SODO OFFICE CONDO FOR SALE

2878 S Osceola Avenue, Unit 5E, Orlando, FL 32806

BROOKE GRAHL-QUTTAINEH, CCIM

Principal
407.678.7505 x1
brooke@thecommercialblueprint.com



PROPERTY DESCRIPTION

This well-maintained +/- 958 SF professional office condominium is located in Orlando's thriving SODO district and features recent renovations throughout. The property offers two separate office areas, a dedicated printer area, a completely renovated break room, and a beautiful bathroom with shower included. Modern upgrades include new tile flooring, recessed lighting, and a recently replaced roof. The property benefits from convenient accessibility, ample parking, and well-maintained landscaping. Zoned O-2/SP, the space accommodates a variety of professional office and medical uses,.

LOCATION DESCRIPTION

This professional office condominium is ideally situated in Orlando's dynamic SODO district. The property provides easy access to Orange Avenue and Michigan Street, two of the area's primary thoroughfares. Its proximity to the Orlando Health Campus makes it particularly attractive for medical and healthcare-related professionals. The location provides easy access to downtown Orlando without the hassle of downtown parking challenges and frequent road closures. This strategic positioning in the SODO district places tenants in one of Orlando's most accessible and rapidly growing commercial corridors.

OFFERING SUMMARY

Sale Price:	\$345,000
Number of Units:	1
Building Size:	+/- 958 SF
Year Built:	1973
Year Renovated:	2025
Zoning:	O-2/SP

DEMOGRAPHICS	1 MILE	3 MILES	5 MILES
Total Households	4,205	49,529	121,889
Total Population	9,725	112,967	303,376
Average HH Income	\$117,198	\$99,566	\$95,816

BROOKE GRAHL-QUTTAINIH, CCIM

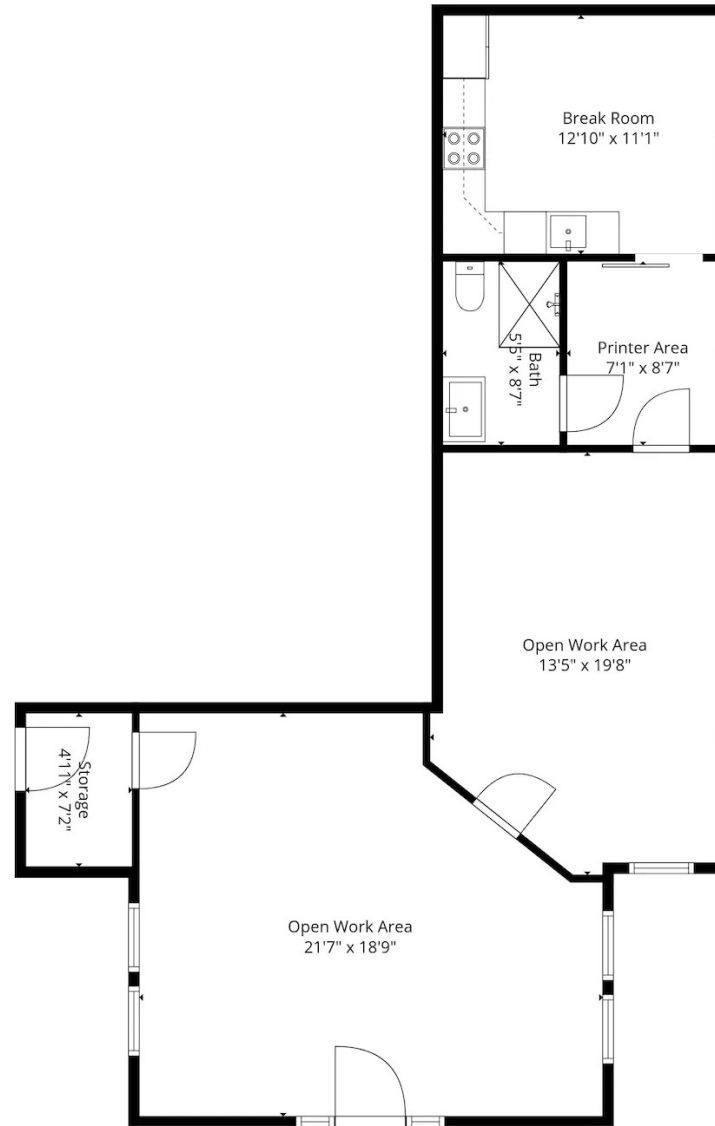
Principal
 407.678.7505 x1
 brooke@thecommercialblueprint.com





BROOKE GRAHL-QUTTAINAH, CCIM
Principal
407.678.7505 x1
brooke@thecommercialblueprint.com

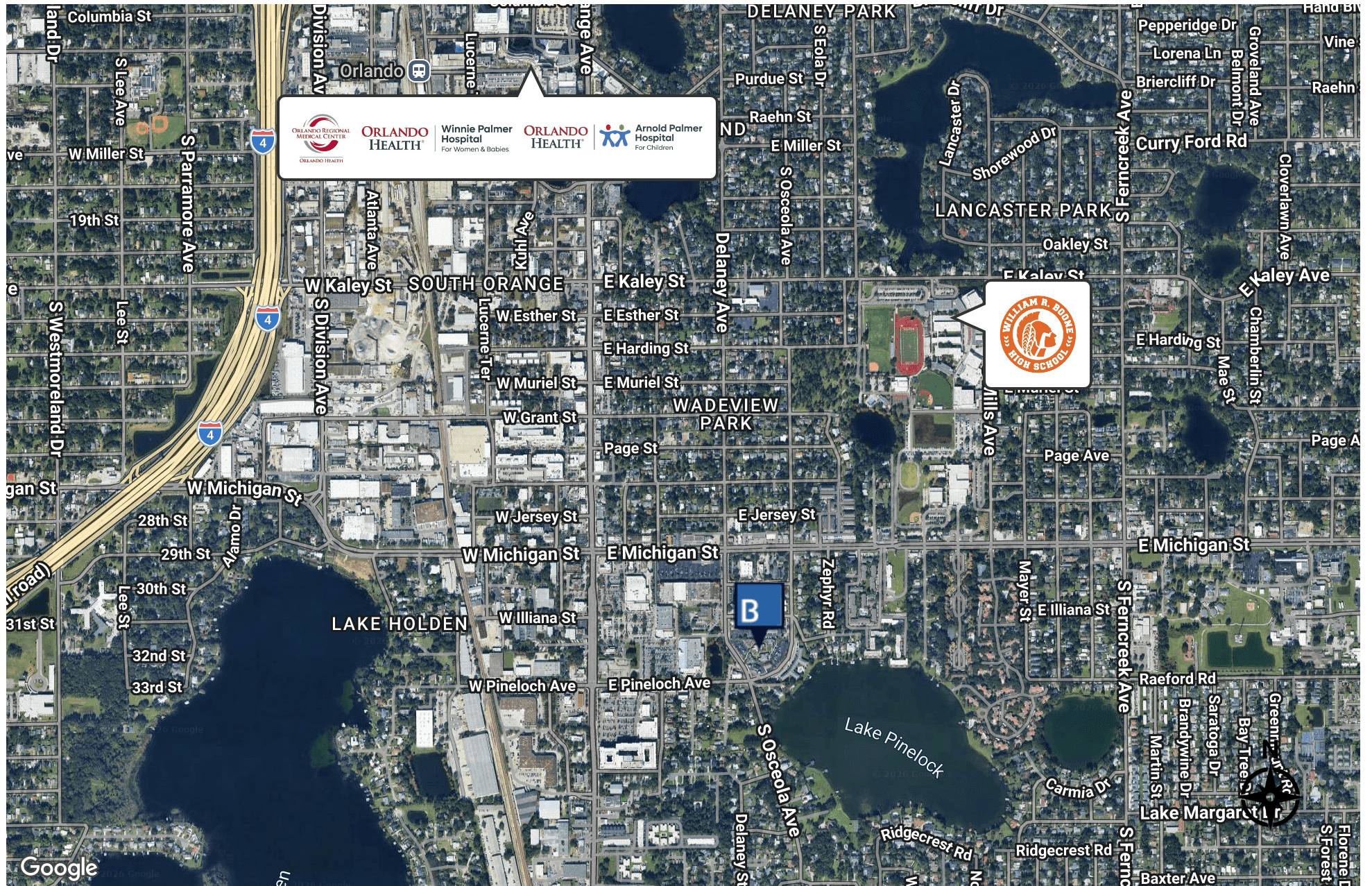




BROOKE GRAHL-QUTTAINEH, CCIM

Principal
407.678.7505 x1
brooke@thecommercialblueprint.com





BROOKE GRAHL-QUTTAINH, CCIM

Principal
407.678.7505 x1
brooke@thecommercialblueprint.com

