

294 John Martin Road

Spartanburg, SC

Key Facts

Property type Industrial space

Building size 101,459 SF

Space available 101,459 SF



Contact Us

Learn more about this property or schedule a tour by reaching out to our local investment and leasing officer.

Thomas Nielsen

+1 (251) 230-0250

thomas.nielsen@eqtpartners.com

294 John Martin Road

Spartanburg, SC

BUILDING SPECIFICATIONS

Building Size: 101,459 SF

Building Space Available: 101,459 SF

Main Office: 6,963 SF w/ restrooms

Warehouse Office: 830 SF w/ restrooms

Building Dimensions: 400' x 250'

Clear Height: 30'

Column Spacing: 50' x 50'

Dock-High Doors: 7 (9' x 10')

Dock Levelers: 4

Drive-In Doors: 1 (12' x 14')

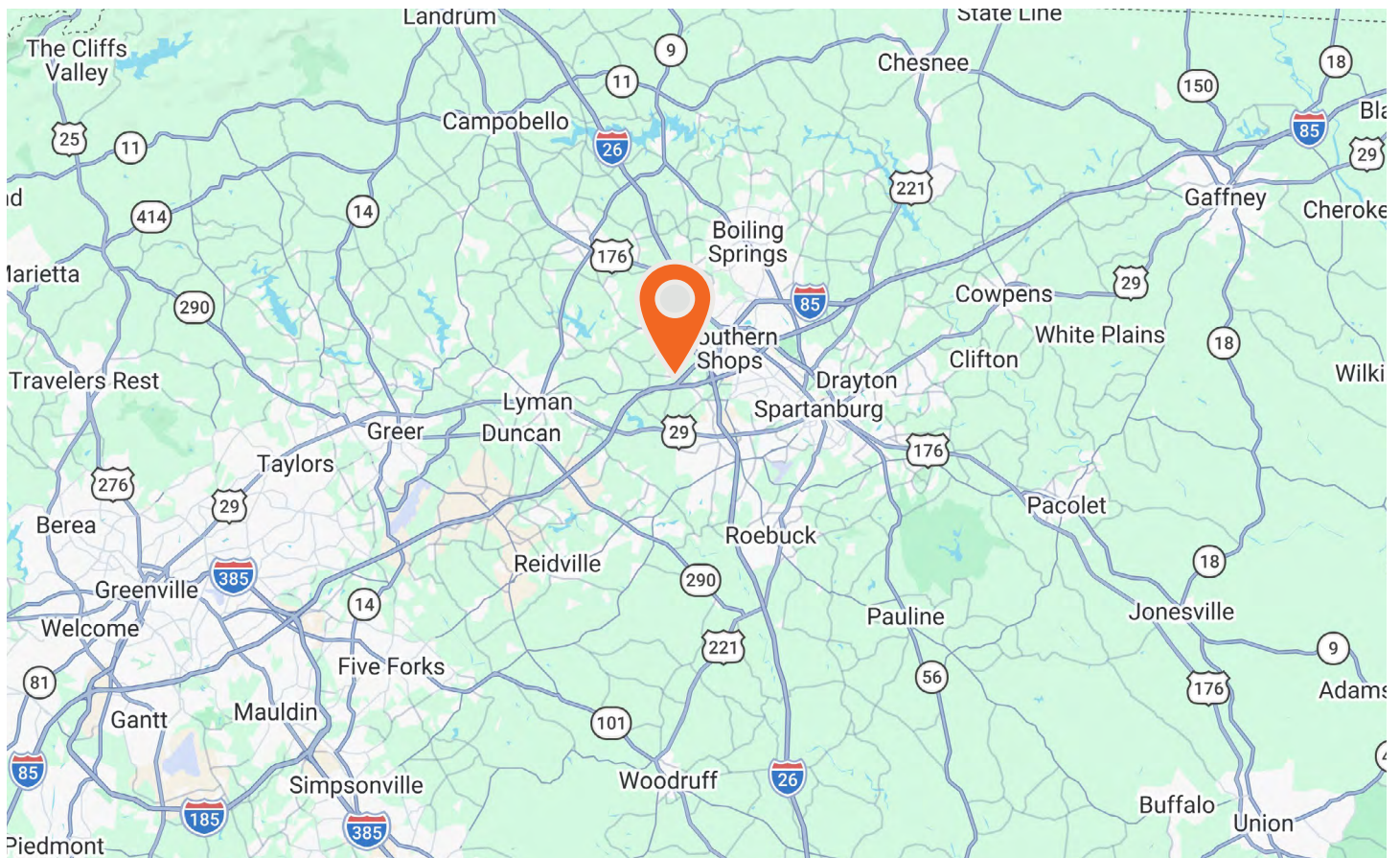
Concrete Apron: 75'

Truck Court Depth: 168'

Auto Parking: 118 spaces

Sprinkler System: ESFR (K-14 heads)

Power: 1,600 amps (480 volt)



Contact Us

Learn more about this property or schedule a tour by reaching out to our local investment and leasing officer.

Thomas Nielsen

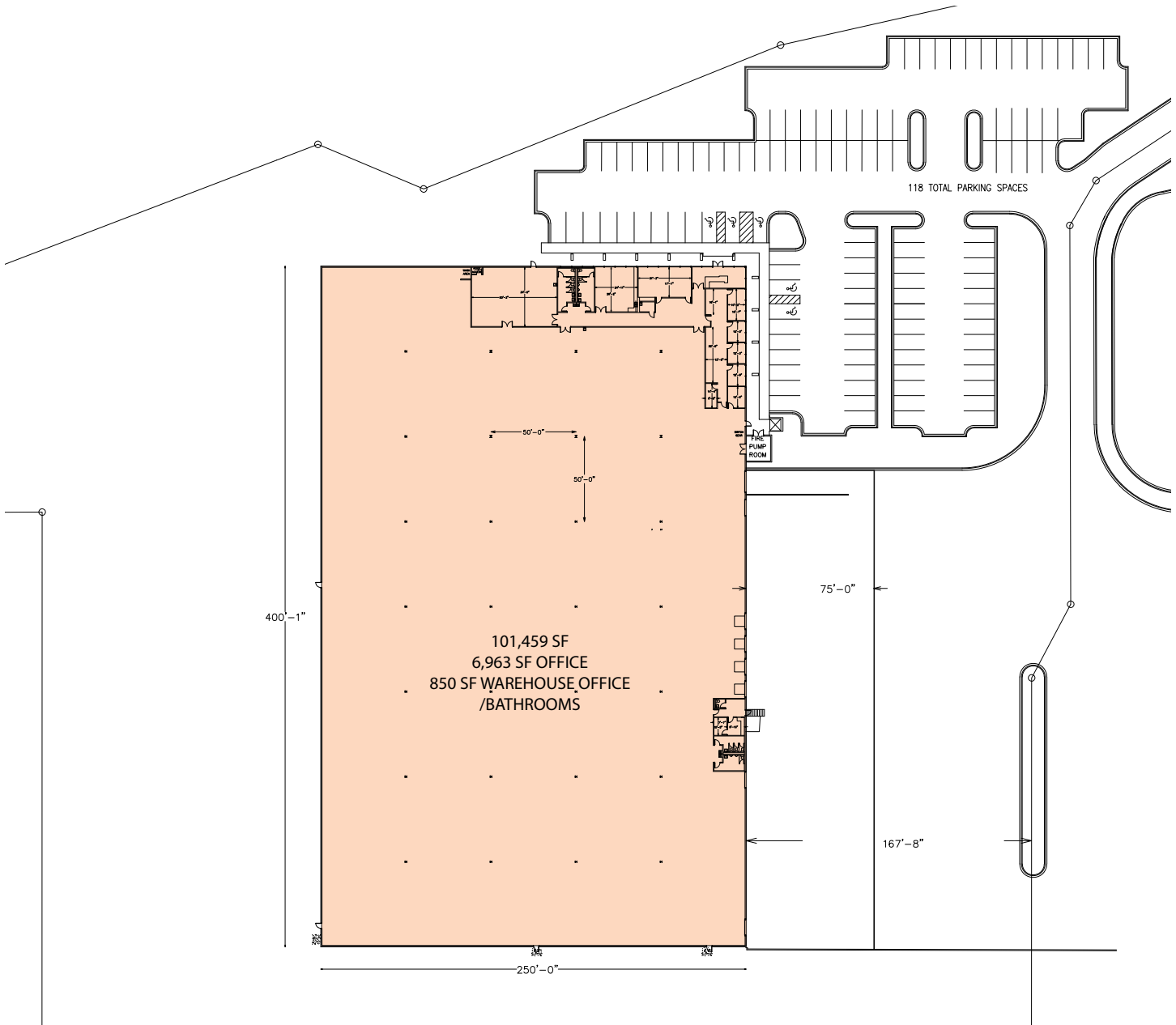
+1 (251) 230-0250

thomas.nielsen@eqtpartners.com

294 John Martin Road

Spartanburg, SC

SITE PLAN - 101,459 SF



Contact Us

Learn more about this property or schedule a tour by reaching out to our local investment and leasing officer.

Thomas Nielsen

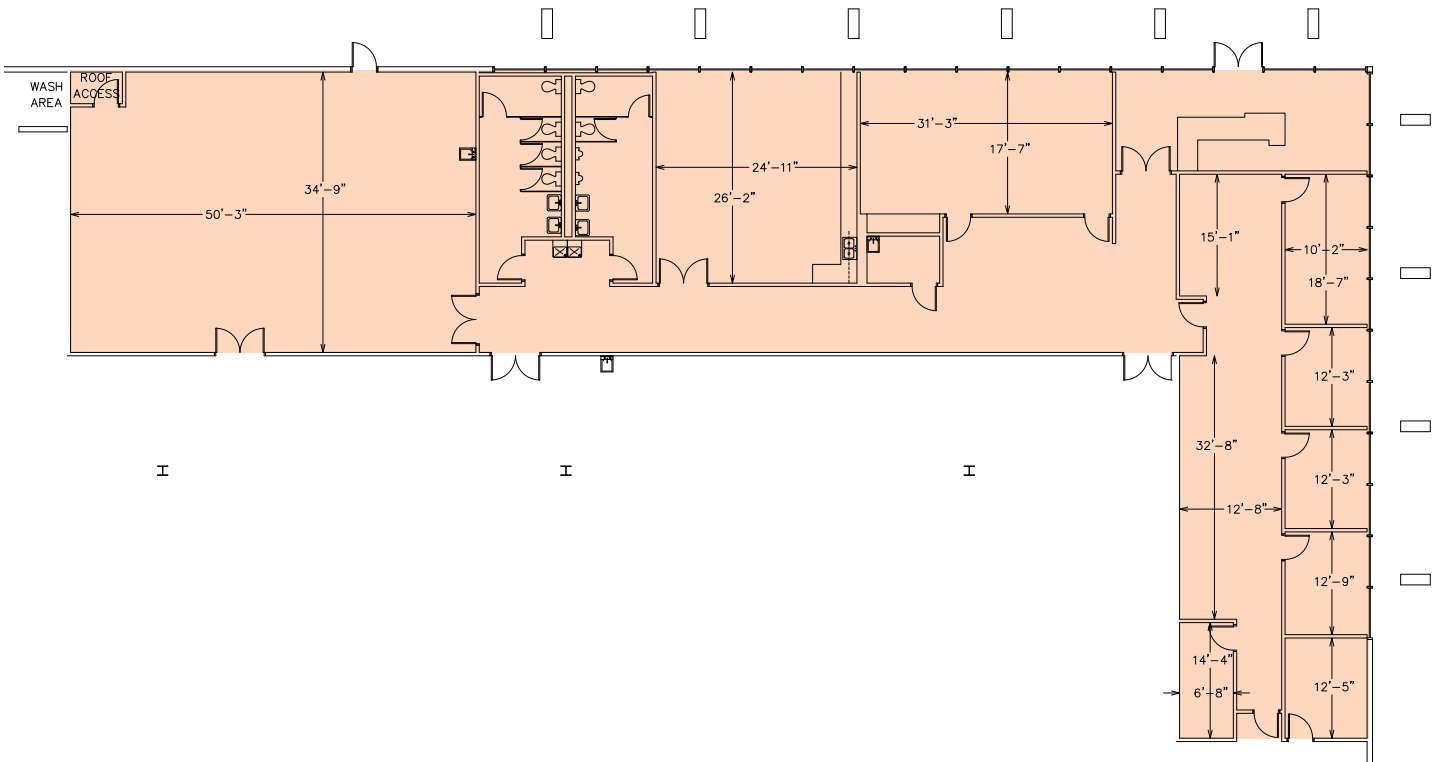
+1 (251) 230-0250

thomas.nielsen@eqtpartners.com

294 John Martin Road

Spartanburg, SC

MAIN OFFICE PLAN - 6,963 SF



Contact Us

Learn more about this property or schedule a tour by reaching out to our local investment and leasing officer.

Thomas Nielsen

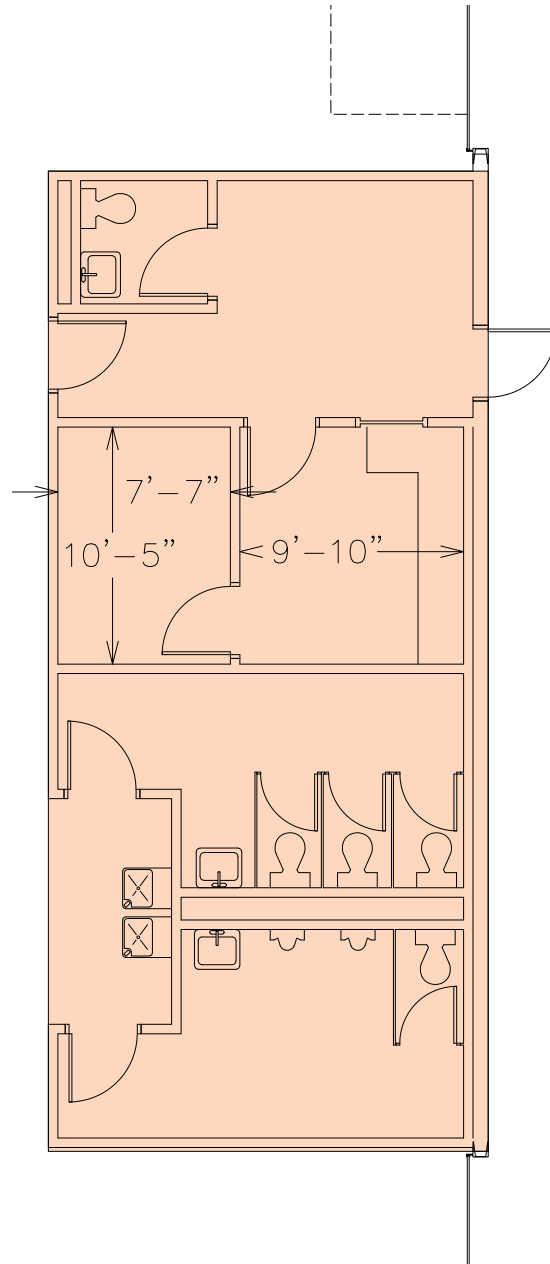
+1 (251) 230-0250

thomas.nielsen@eqtpartners.com

294 John Martin Road

Spartanburg, SC

WAREHOUSE OFFICE PLAN - 850 SF



Contact Us

Learn more about this property or schedule a tour by reaching out to our local investment and leasing officer.

Thomas Nielsen

+1 (251) 230-0250

thomas.nielsen@eqtpartners.com