

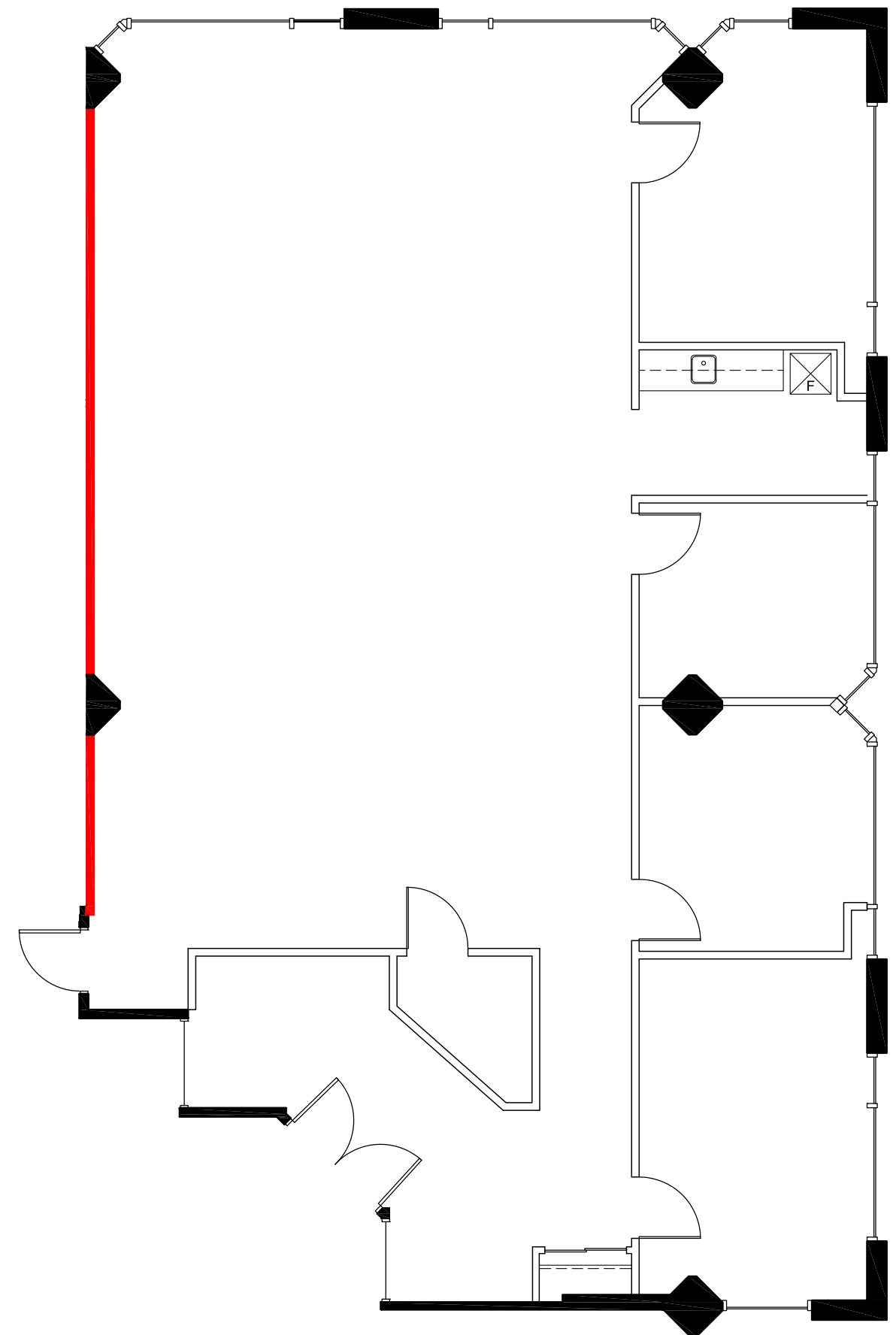
Manulife Corporate Park
6711 Mississauga Rd

Suite 100

2,469 sq. ft.

- ◇ High ceilings
- ◇ Mostly open concept
- ◇ 2 meeting rooms
- ◇ 2 offices
- ◇ Small kitchenette

Available Immediately



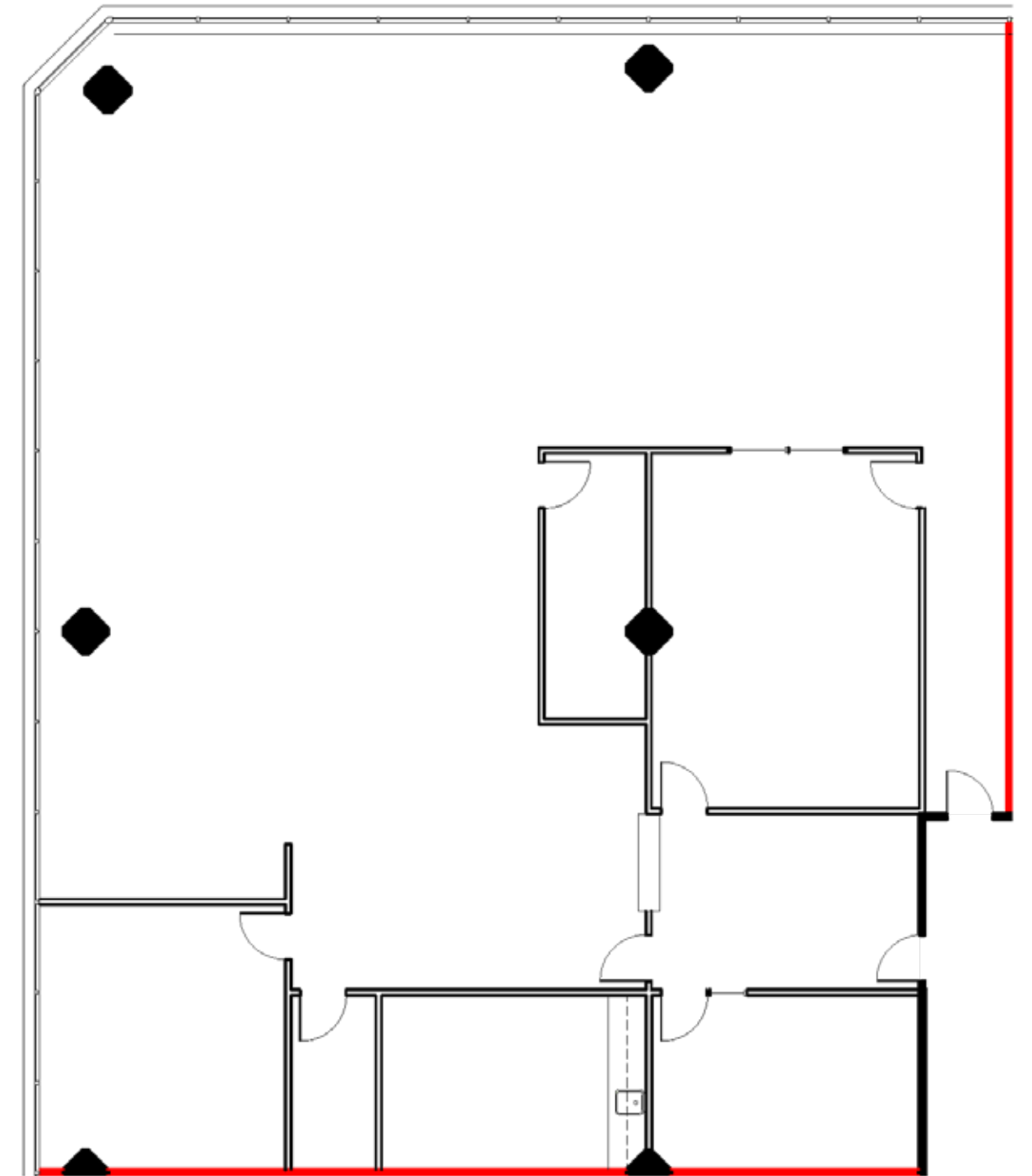
Manulife Corporate Park
6711 Mississauga Rd

Suite 306

3,858 sq. ft.

- ◇ Corner unit
- ◇ Mostly open concept
- ◇ Kitchenette

Available Immediately



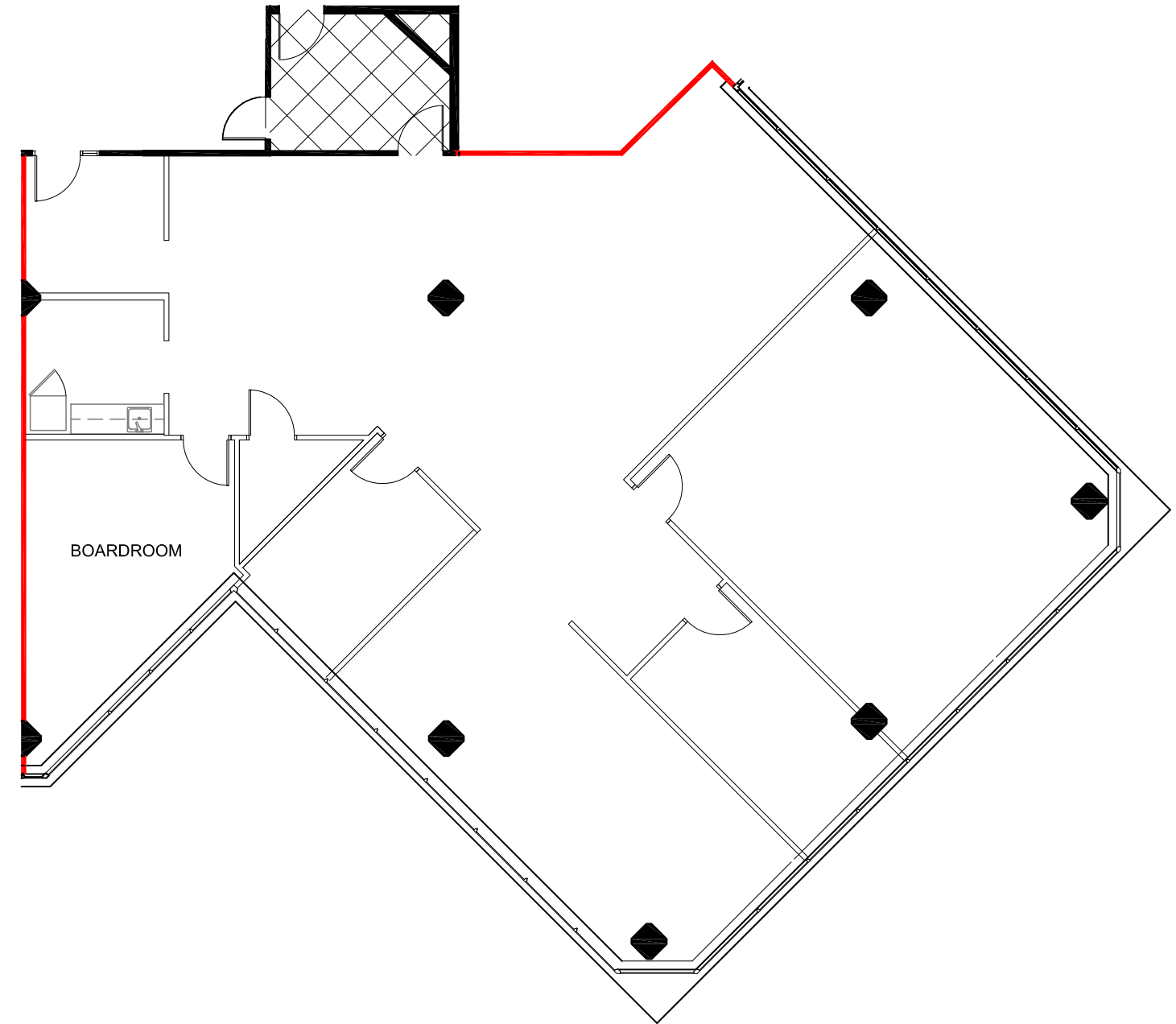
Manulife Corporate Park
6711 Mississauga Rd

Suite 312

3,750 sq. ft.

- ◇ Elevator exposure
- ◇ Small kitchenette
- ◇ Open area
- ◇ 2 boardrooms
- ◇ Currently demised into 3,750 sq. ft. and 774 sq. ft.

Available Immediately



Manulife Corporate Park
6711 Mississauga Rd

Suite 400

13,517 sq. ft.

- ◆ Built-out suite
- ◆ Mix of private offices, boardrooms, open/collaborative work areas, and eat-in kitchen

Available Immediately



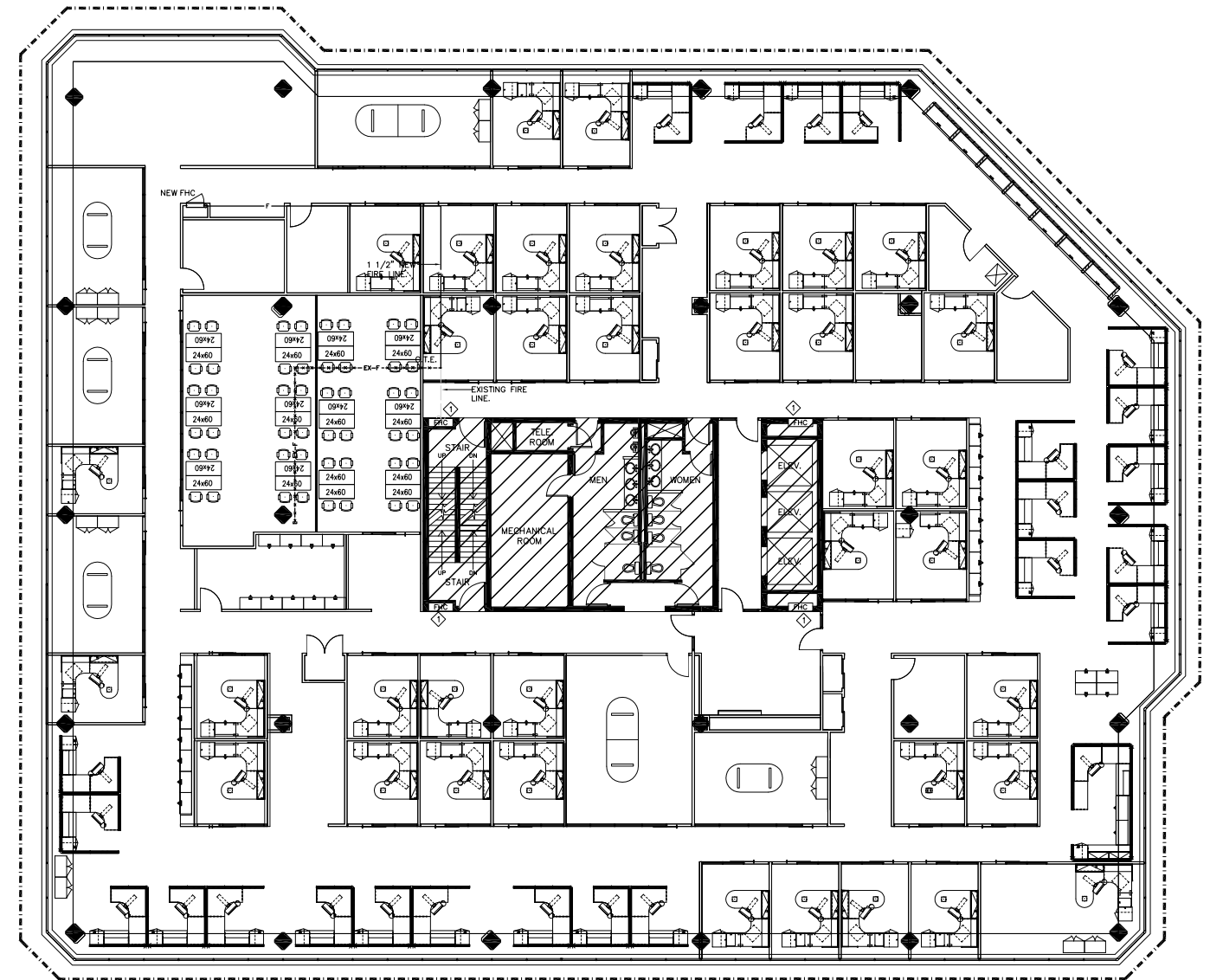
Manulife Corporate Park
6711 Mississauga Rd

Suite 600

19,949 sq. ft.

- ◇ Built-out suite
- ◇ Mix of private offices, boardrooms, open/collaborative work areas, and eat-in kitchen

Available Immediately



Manulife Corporate Park
6711 Mississauga Rd

Suite 710

2,365 sq. ft.

- ◇ Built-out suite
- ◇ Mix of private offices, boardroom, open/collaborative work area, and kitchen

Available Immediately

