

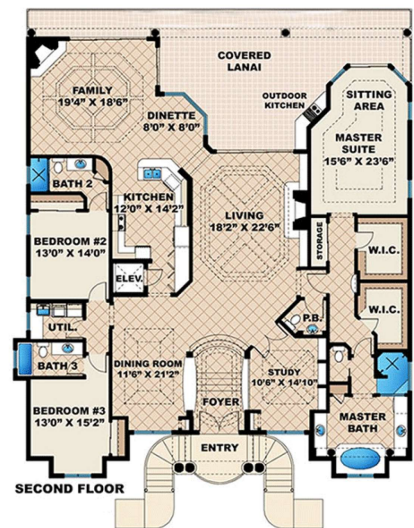
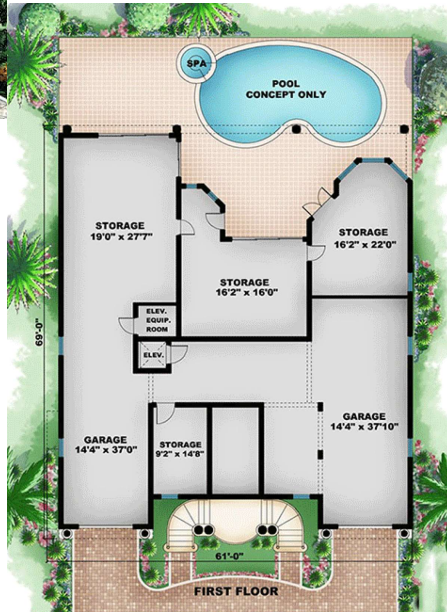
MEDITERRANEAN HOUSE PLAN 1018-00070

SQ FT	BEDS	BATHS	1/2 BATHS	STORIES	CARS	WIDTH	DEPTH
3,351	3	3	1	2	3	61' 0"	69' 0"



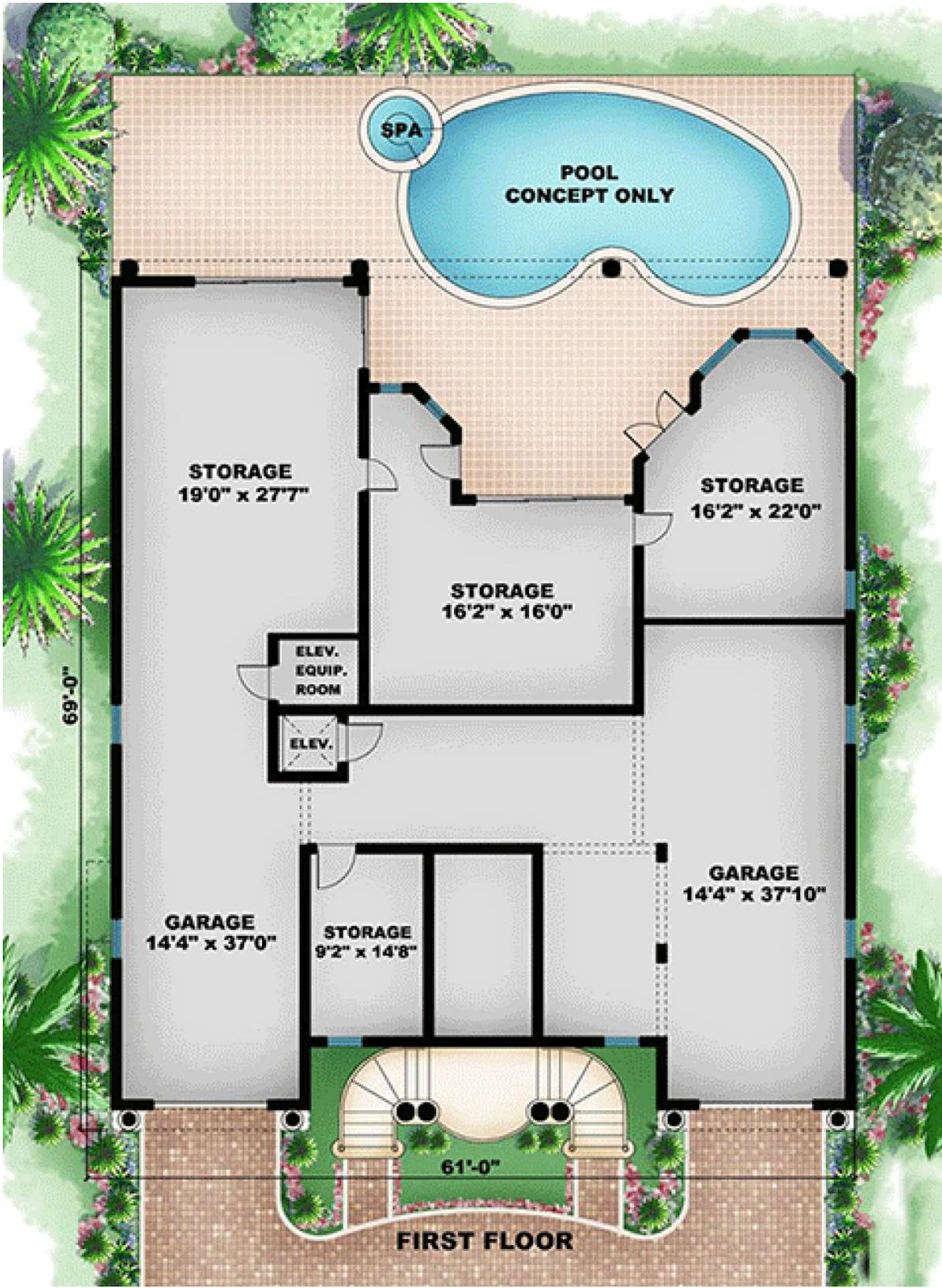
FLOORPLAN 1

FLOORPLAN 2

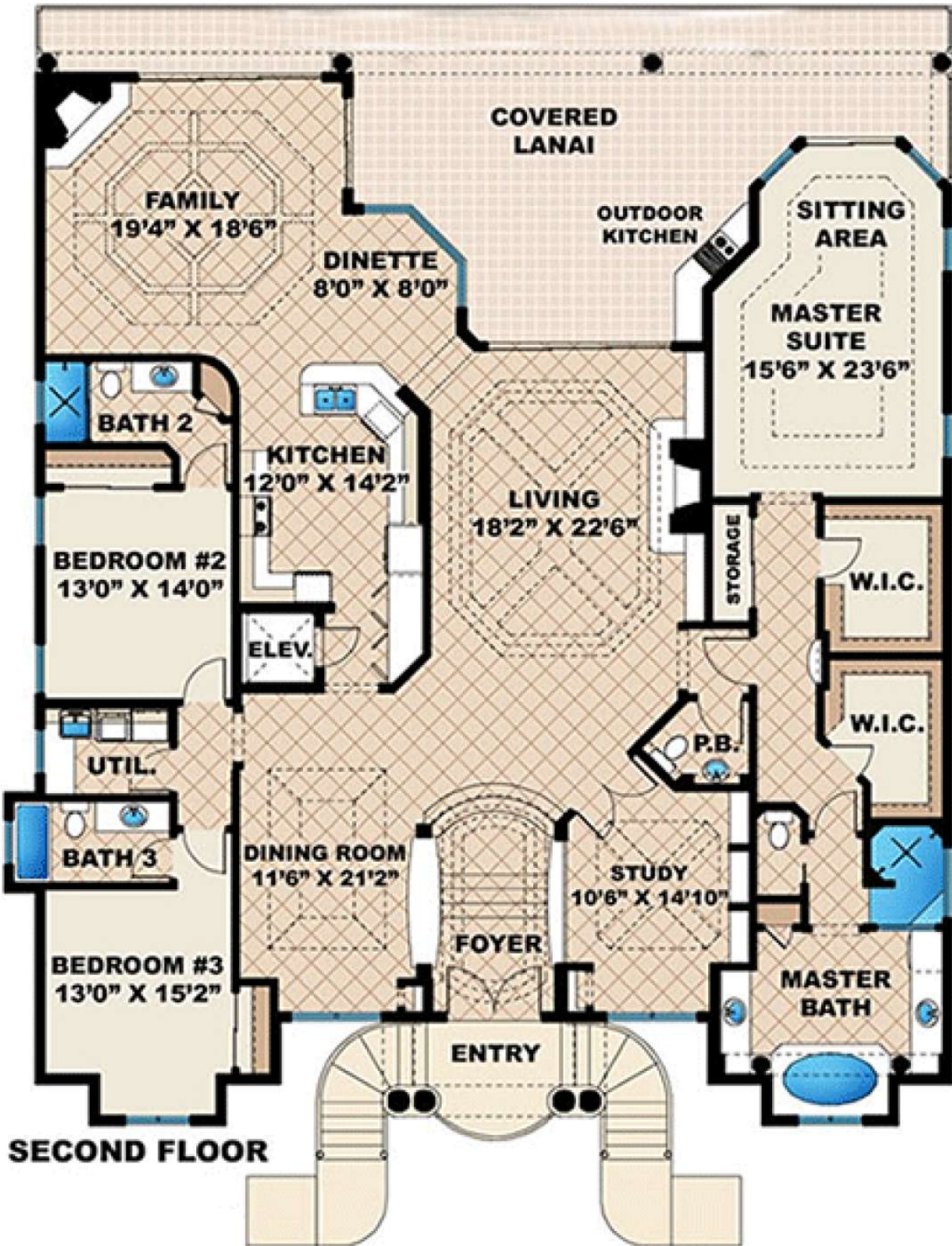


Images copyrighted by the designer. Photographs may reflect a homeowner modification.

FLOORPLAN 1



FLOORPLAN 2



FEATURES

BEDROOMS:	Master Up Split Bedrooms
HOME FEATURES:	Elevator
GARAGE:	Front Entry Garage
KITCHEN:	Breakfast Nook Open Floor Plan
LAUNDRY:	Laundry Second Floor
OUTDOOR:	Lanai
ROOMS:	Formal Living Room Study

DETAILS

TOTAL HEATED AREA:	3,351 sq. ft.
-- FIRST FLOOR:	3,351 sq. ft.
-- ENTRY:	82 sq. ft.
-- GARAGE:	3,303 sq. ft.
FLOORS:	2
BEDROOMS:	3
BATHROOMS:	3
HALF BATHS:	1
GARAGES:	3 car
WIDTH:	61ft.
DEPTH:	69ft.
HEIGHT:	39ft.-2in.
FOUNDATION:	Piling Foundation
MAIN ROOF PITCH:	6:12
FRAMING:	CMU
ADDITIONAL SPECS:	Show Room Dimensions

FREQUENTLY ASKED QUESTIONS

WHAT'S INCLUDED IN THESE PLANS?

- **Elevations:** Drawn at 1/8" to 1/4" = 1'-0" Scale, and Includes, Material Labels, Floor-to-Floor Heights, Roof Slope Indicators
- **Floor Plans:** Drawn at 1/8" to 1/4" = 1'-0" Scale, and Includes, Door and Window Sizes, Completely Dimensioned Floor Plan, Room Labels and Interior Room Sizes
- **Electrical Layouts:** Building Section Markers, All Electrical Outlets, Fixtures, and Switching
- **Slab Plan:** Drawn at 1/8" to 1/4" = 1'-0" Scale, and Includes, Floor and Deck Joist Size and Spacing, Rough-in Plumbing Location (if applicable), Mechanical Equipment Locations (if applicable), Electrical Locations (if applicable)
- **Roof Design Plan:** Drawn at 1/8" to 1/4" = 1'-0" scale, and Includes, All Beam and Header Heights and Locations, All Hips, Gables, Ridges and Valleys, Building Section Markers
- **Building Sections:** Drawn at 1/8" to 1/4" = 1'-0" Scale, and Includes, Floor Joist Size and Spacing, Floor-to-Floor Heights, Non-Typical Plate Heights Indicated
- **Typical Wall Sections:** Drawn at 1/8" to 1/2" = 1'-0" Scale, and Includes, All Labels Indicating Wall Construction, Foundation Wall Thickness and Reinforcing, Insulation Type and Thickness
- **Miscellaneous Notes and Details:** Miscellaneous General Notes, Stairway details (if applicable)