



**ONE GLOVER**  
**2121 WISCONSIN, N.W.**

2121 Wisconsin, N.W.

# AN ELEVATED OFFICE EXPERIENCE



BRAND NEW

*lobby*



# PRIME GLOVER PARK

*location*

One Glover is a six-story, 110,000 SF office building nestled in the heart of Glover Park, a bustling neighborhood with plenty to eat and explore.

Tenants enjoy expansive views of the Washington Monument and the National Cathedral.



# ENJOY CONVENIENT *access*



Parking  
Garage



Courtyard



Renovated  
Lobby



Accessibility



River  
Views



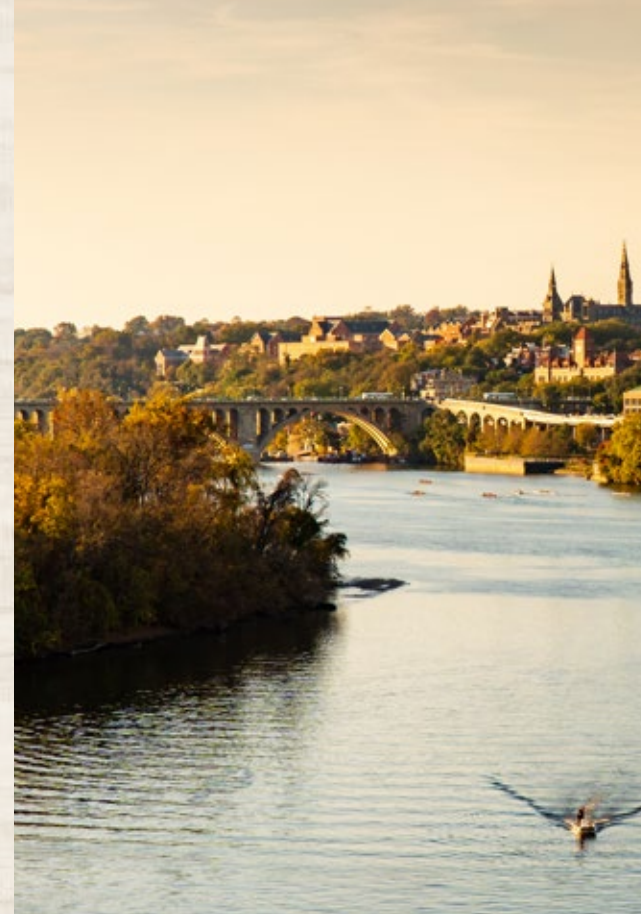
Balance  
Gym



In the Heart  
of Glover Park



Wisconsin Ave  
Retail Nearby



# ACTIVE

# *lifestyle*

## ABUNDANT RETAIL IN THE NEIGHBORHOOD

### Arts & Entertainment

Dumbarton Oaks  
Glover Park Hotel Georgetown  
Tudor Place Historic House & Garden  
Taste of Georgetown

### Bakeries

Patisserie Poupon  
Fresh Baguette  
Breadsoda  
The Fountain Inn  
Janti Cafe

### Health Clubs/Gyms

CVS Pharmacy  
Balance Gym Glover Park

### Restaurants & Retail

PhoWheels  
Dumplings & Beyond  
Simply Banh Mi  
Sprig and Sprout: Pho and Viet Sandwich Shop  
Old Europe  
Wingo's  
Shanghai Lounge  
Bistrot Lepic & Wine Bar  
Erkin's Uyghur Cuisine  
Rocklands Barbeque and Grilling  
Cafe Divan  
Jaco Juice and Taco Bar  
Sushi Keiko  
Paisano's  
Glover Park Grill  
Lavazza  
Pizza Movers and Calzones  
Marios Trattoria  
All About Burger

### Shopping

Glover Park Ace Hardware  
Georgetown Massage and Bodywork  
Market Street Diamonds  
Everard's Clothing  
Lovely Bride  
Field English Custom Tailors



**ONE GLOVER**  
2121 WISCONSIN, N.W.



**15 FOOT CEILLINGS**

# Floor Plans

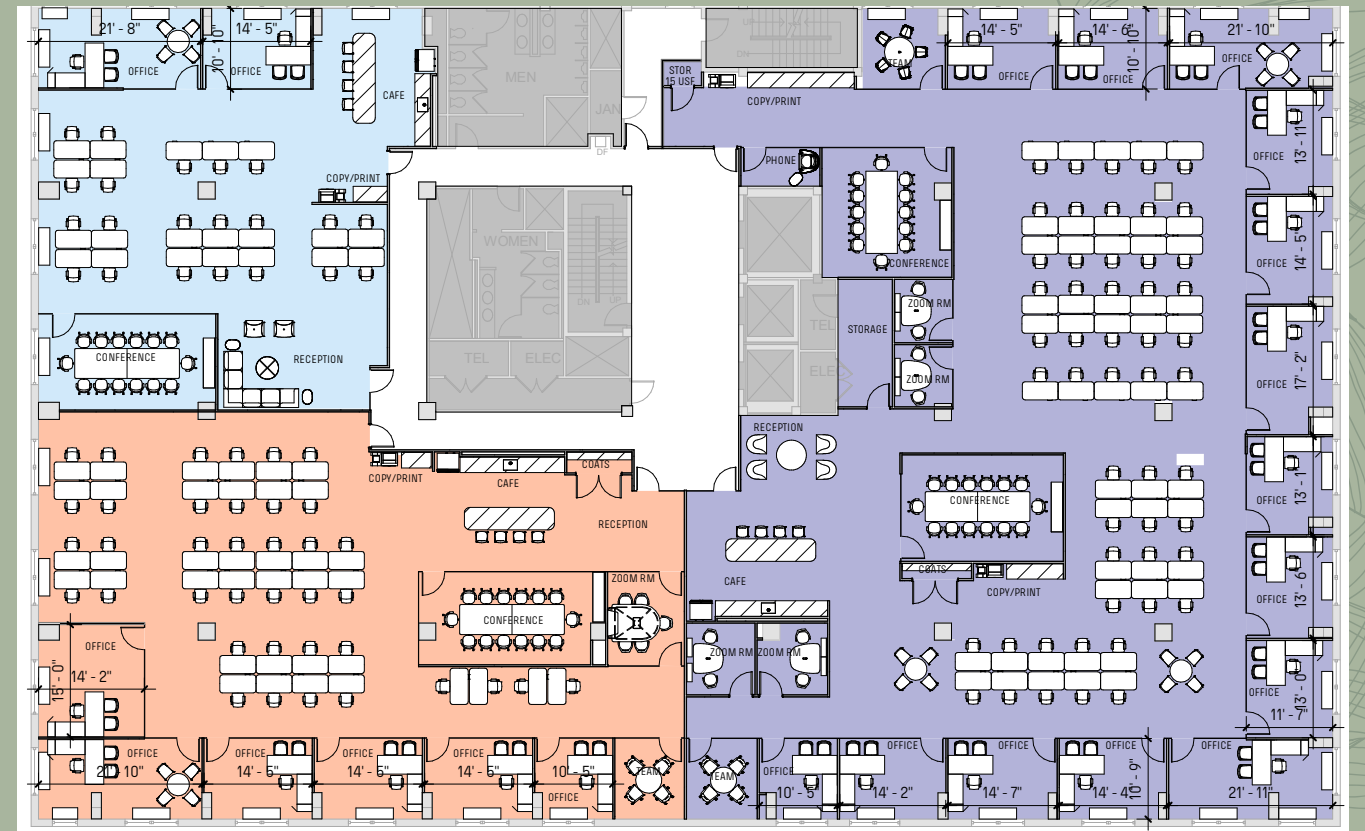
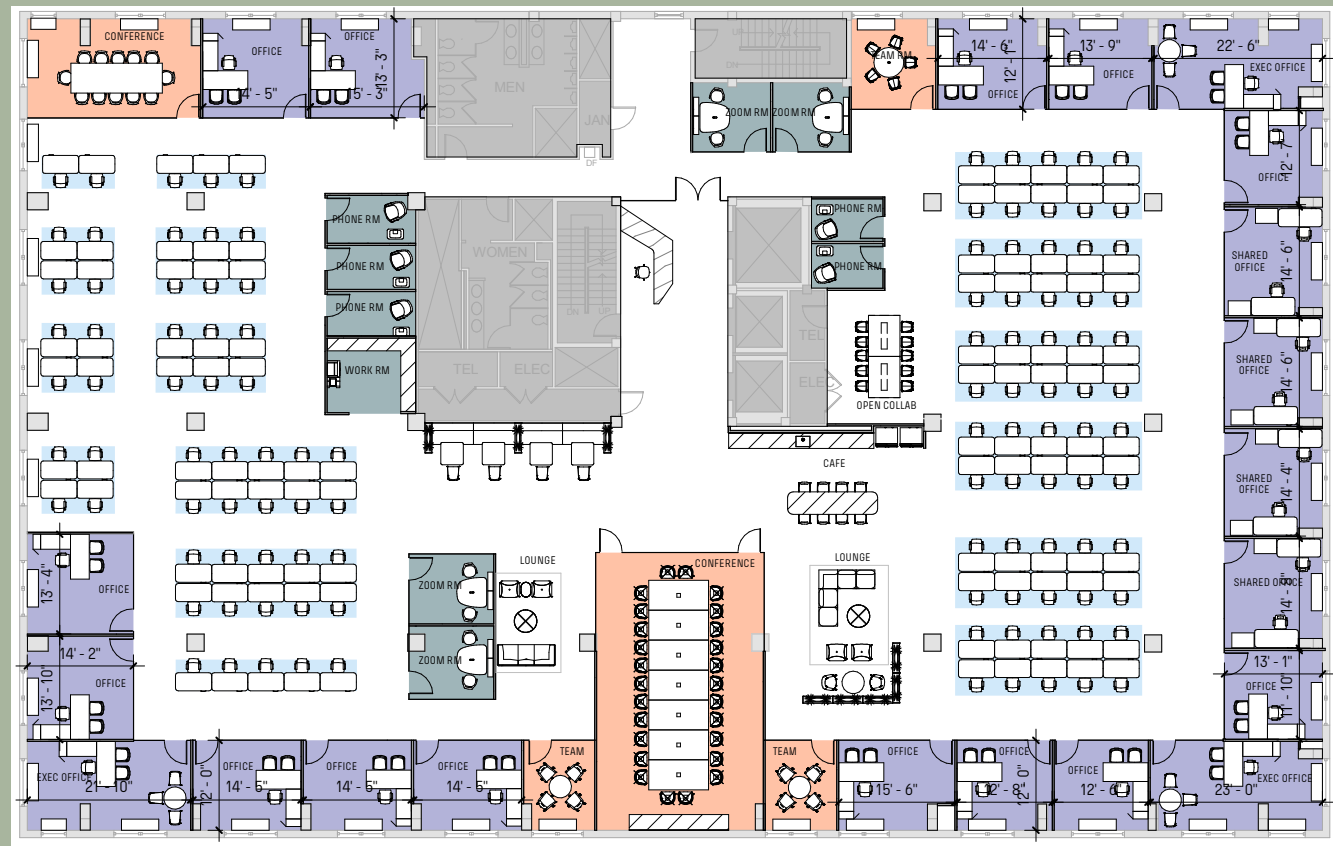


FULL 4TH FLOOR  
20,322 SF

SINGLE TEST FIT

VIEW VIRTUAL TOUR HERE

MULTI TEST FIT



Views Into  
Naval  
Observatory

4

Sides of Glass



Incredible  
River Views

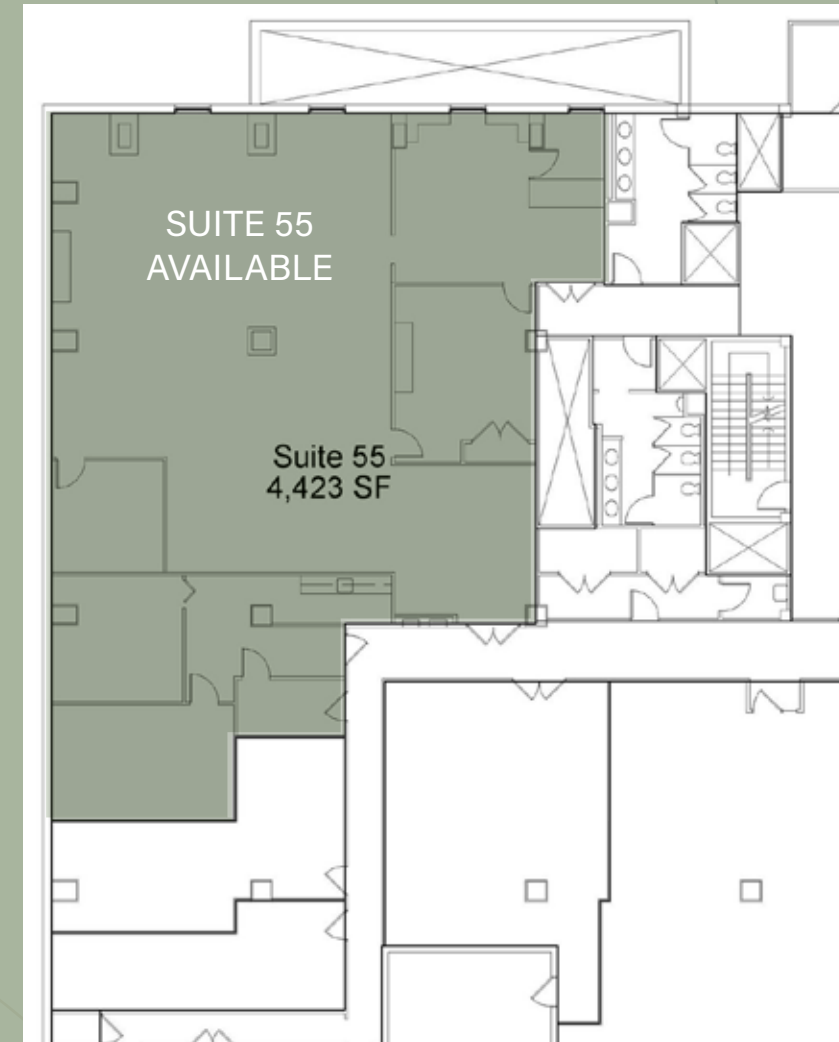
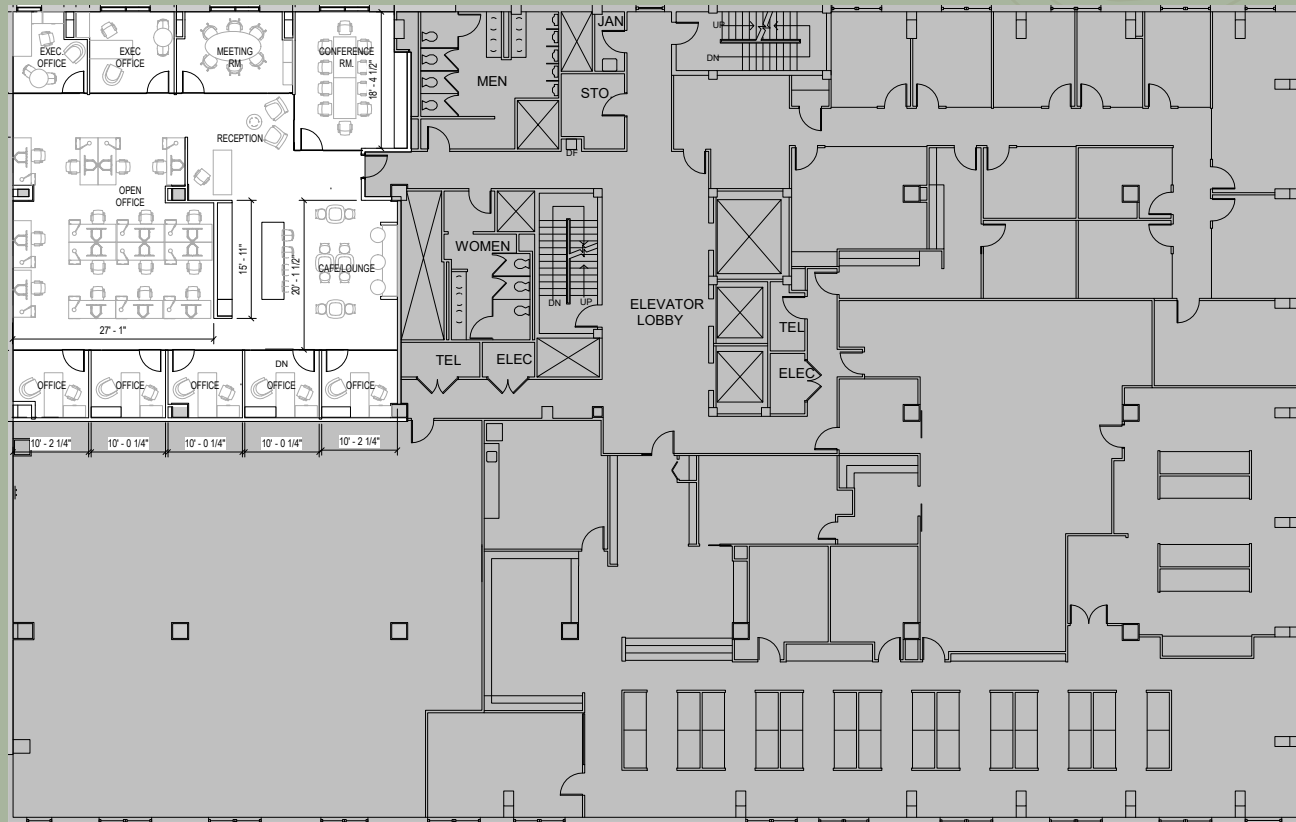


Remarkable  
ceiling heights

# floor Plans

2ND FLOOR  
4,079 SF

LOWER LEVEL  
6,111 SF



15 FOOT CEILINGS



Views Into  
Naval  
Observatory

4

Sides of Glass

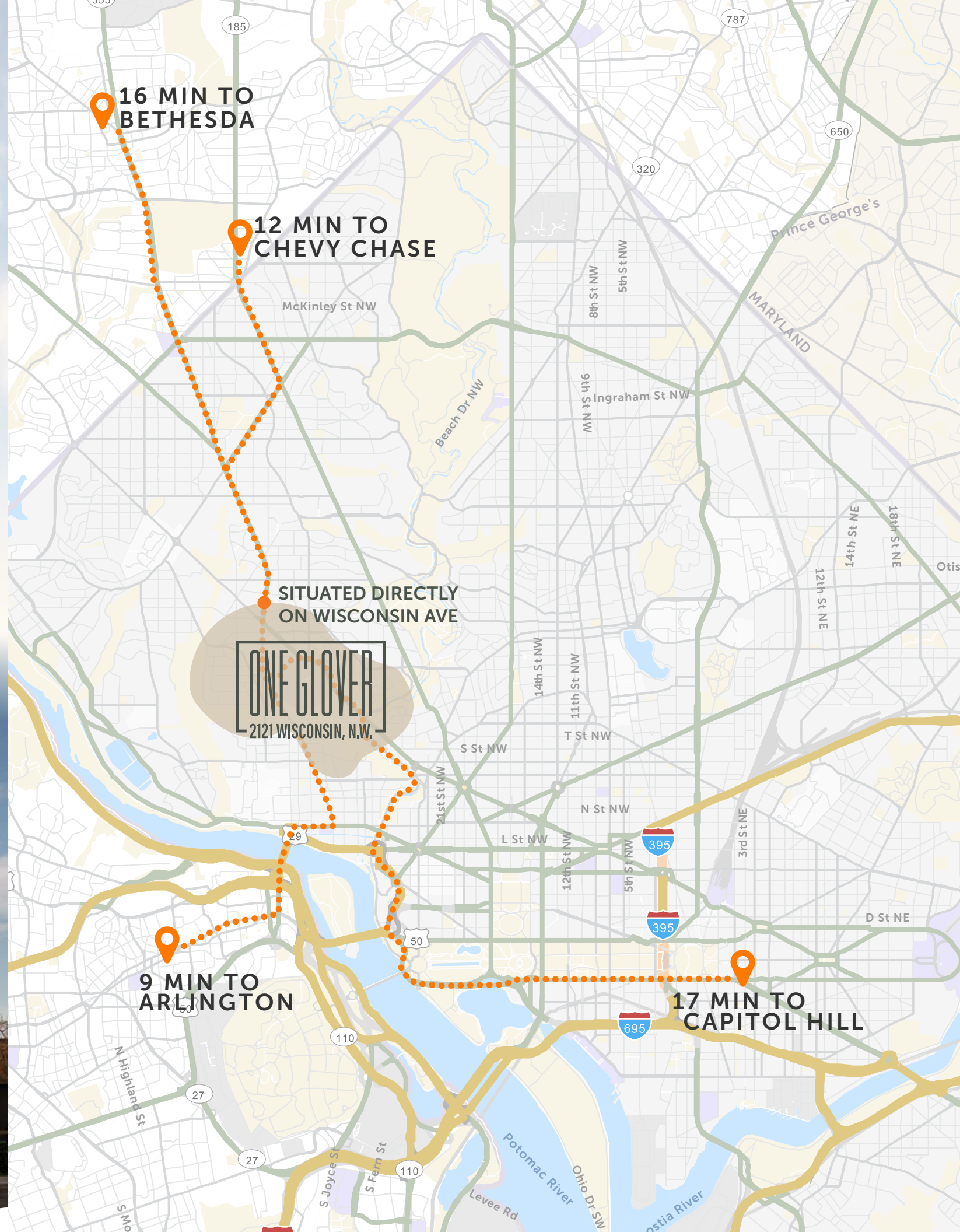


Incredible  
River Views



Remarkable  
ceiling heights

**A QUICK  
COMMUTE FROM**  
*anywhere*



# ONE GLOVER

2121 WISCONSIN, N.W.

**MARK WOOTERS**

+1 202 739 0363  
mark.wooters@cushwake.com

**JAMES COLLINS**

+1 202 266 1188  
james.collins@cushwake.com

**GINA DAMOND**

+1 202 407 8127  
gina.damond@cushwake.com

