

Pacific Arts Plaza

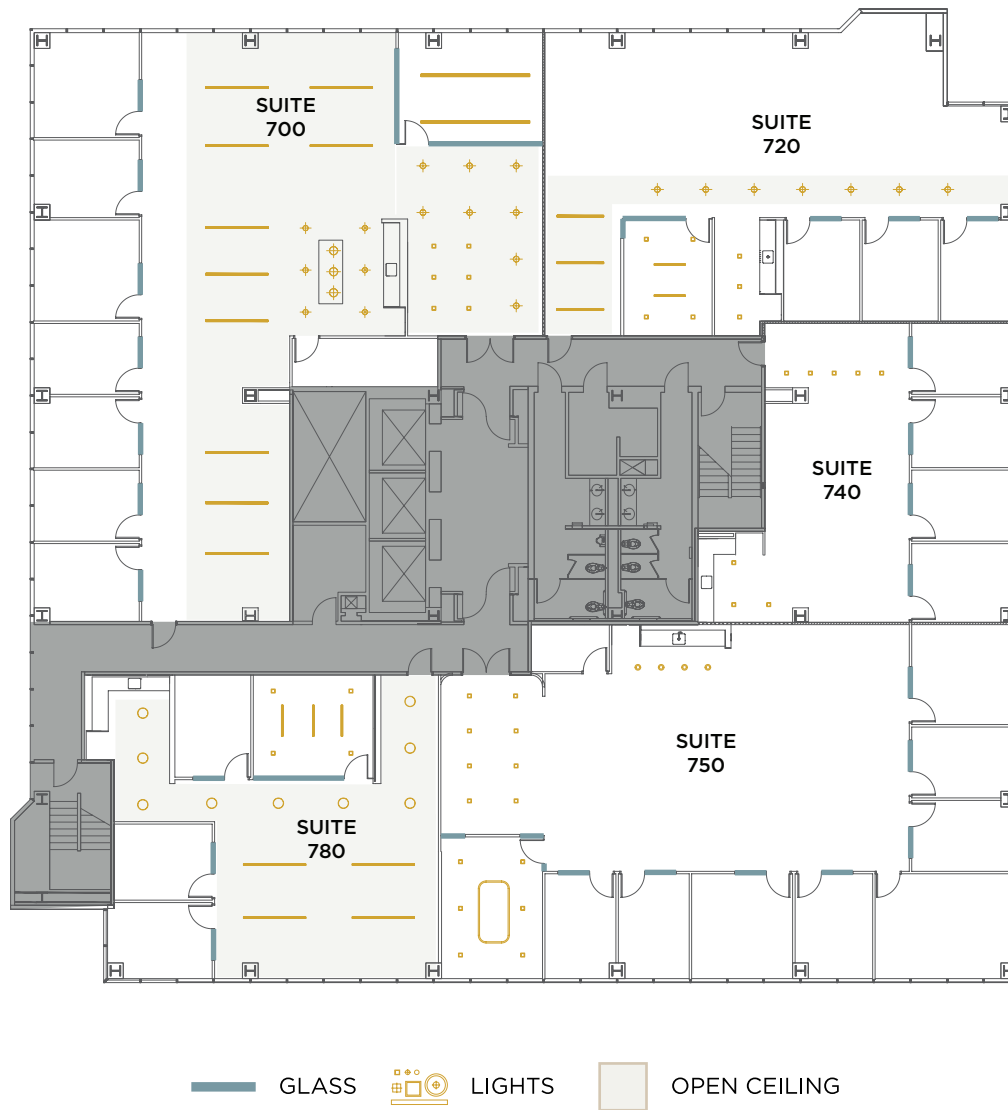
3200 Bristol Street | 7th Floor

Flex+[®]
BY IRVINE COMPANY



3200 Bristol Street

7th Floor Overview



- 5 new, premium move-in ready suites ranging from 1.6K - 4.7K SF (Available February 2026)
- High-end suite finishes including open ceiling, specialty lighting and premium break areas
- Convenient access to onsite amenities, including casual and fine-dining options, Kinetic fitness center and an upgraded Venue Meetings & Events Center

3200 Bristol Street

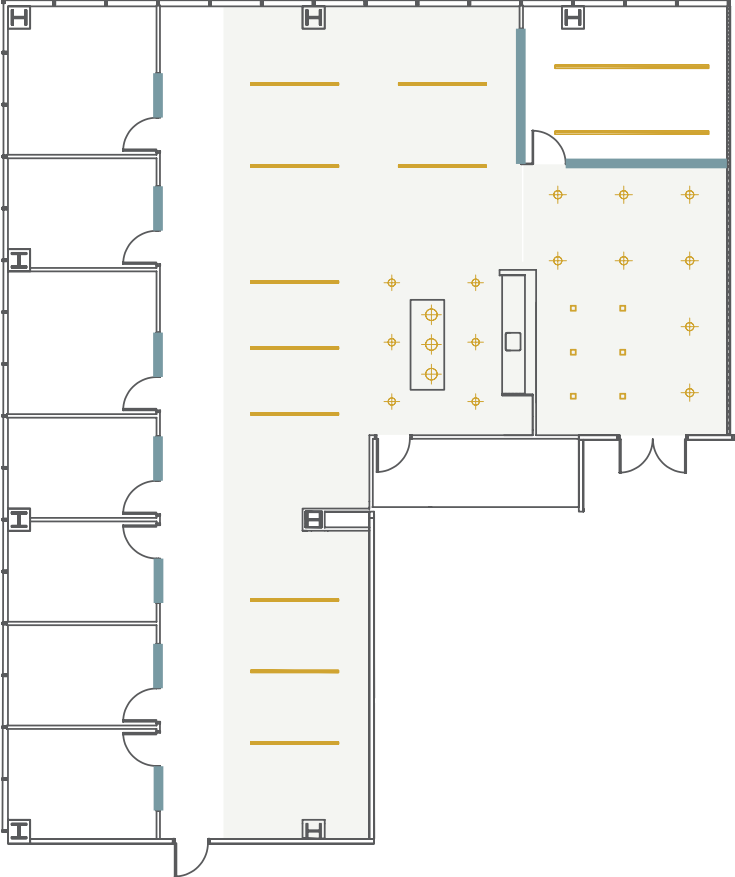
Suite 700

Total Size
±4,767 sqft

Team Size
22-28

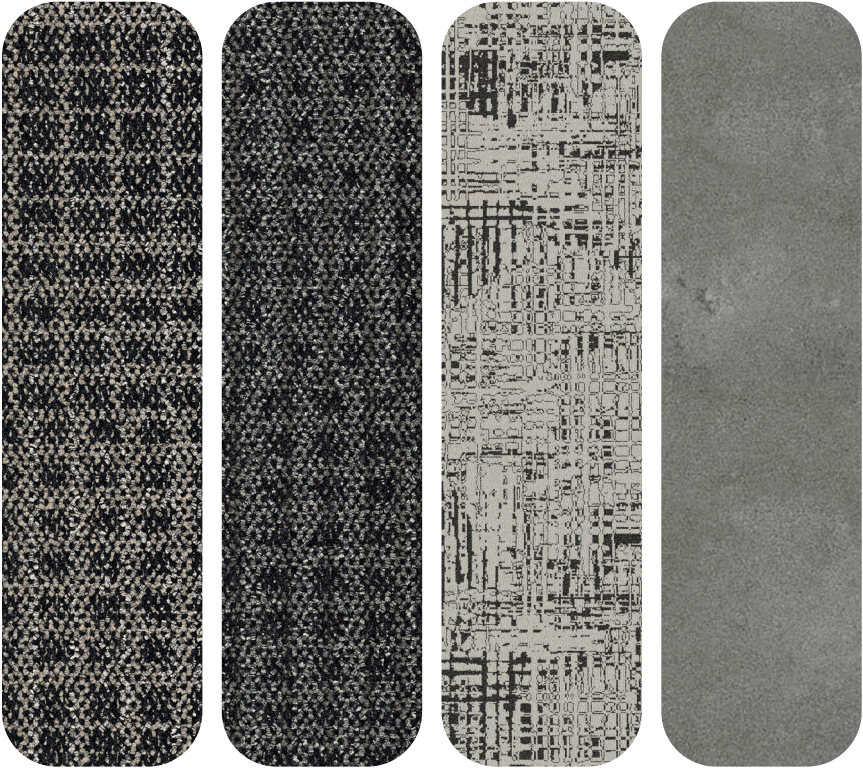
Private Offices
7

Meeting Room
1



GLASS LIGHTS OPEN CEILING

finish palette



Flooring



Break Room



Paint Scheme

3200 Bristol Street

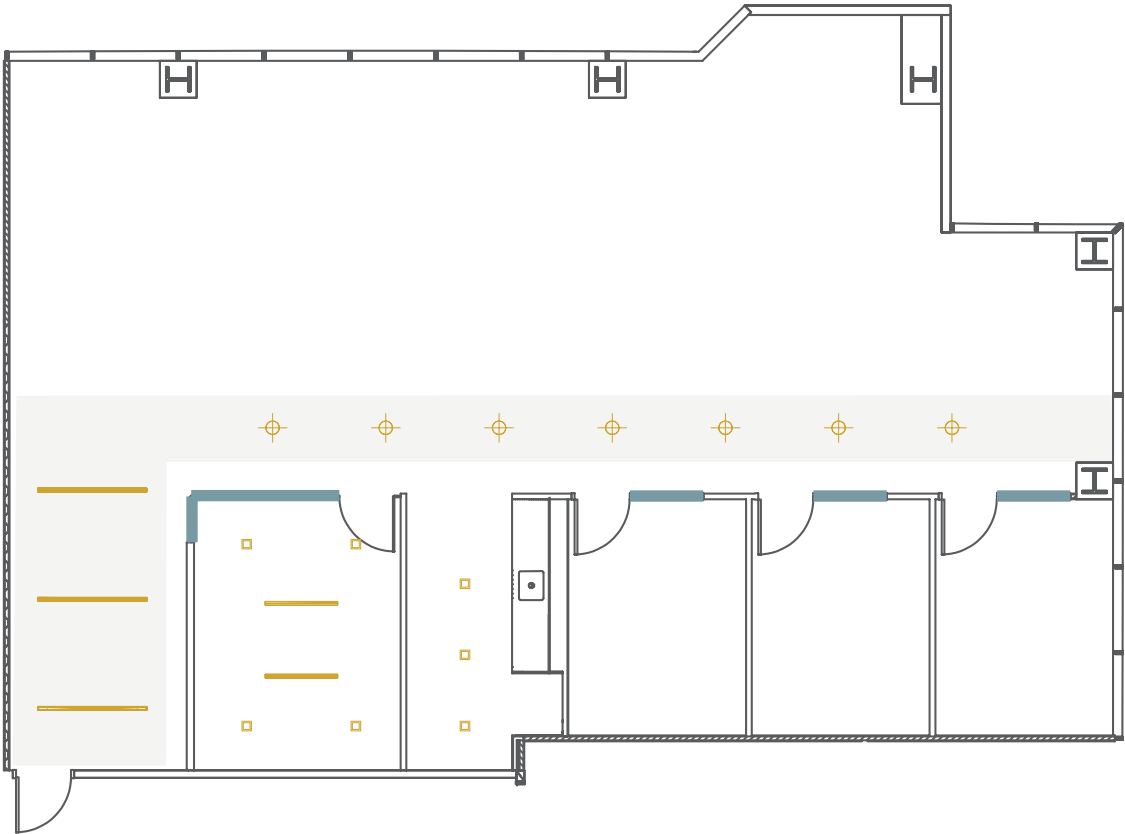
Suite 720

Total Size
±2,751 sqft

Team Size
12-16

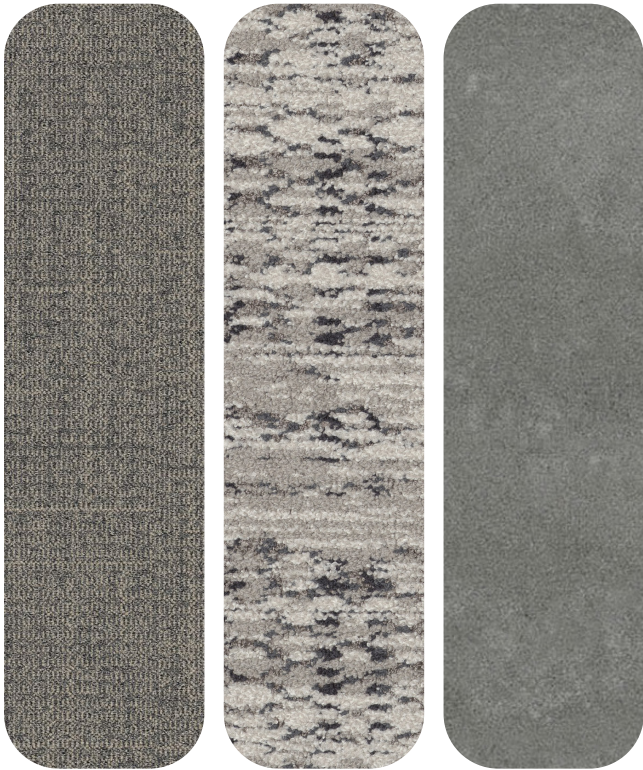
Private Offices
3

Meeting Room
1

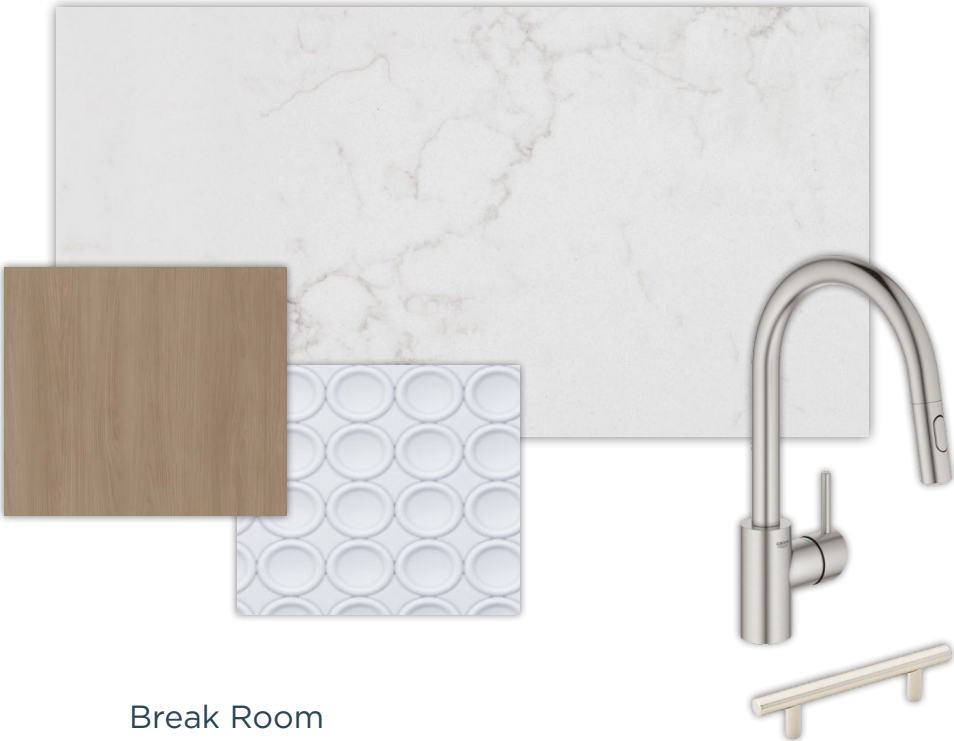


GLASS LIGHTS OPEN CEILING

finish palette



Flooring



Break Room



Paint Scheme

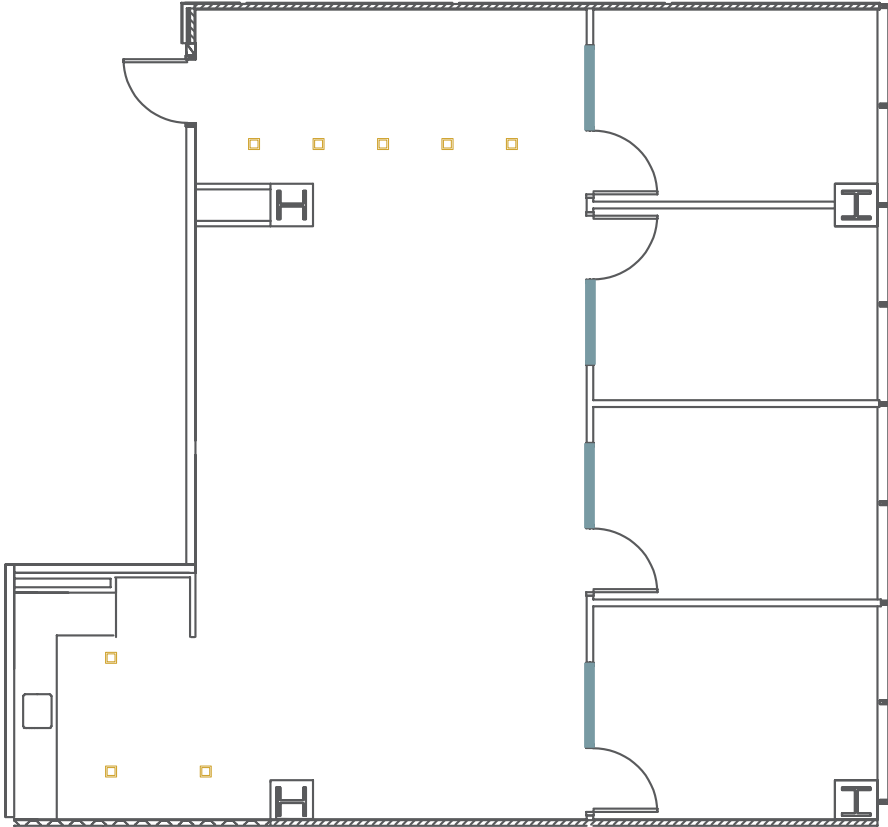
3200 Bristol Street Suite 740

Total
Size
±1,684 sqft

Team
Size
8-10

Private
Offices
3

Meeting
Room
1

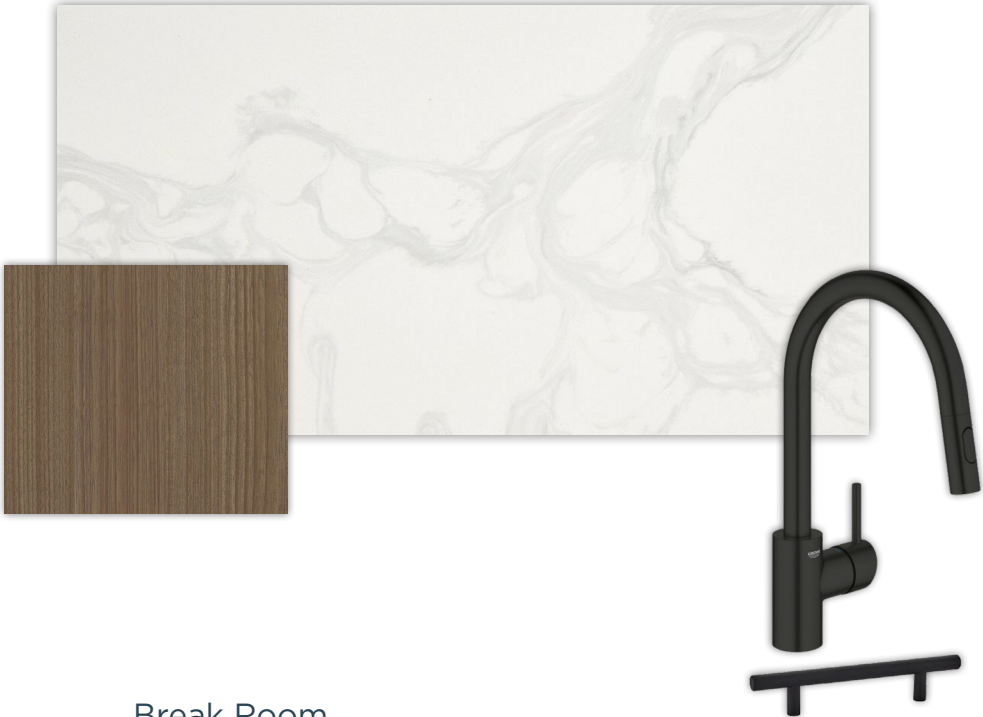


— GLASS  LIGHTS

finish palette



Flooring



Break Room



Paint Scheme

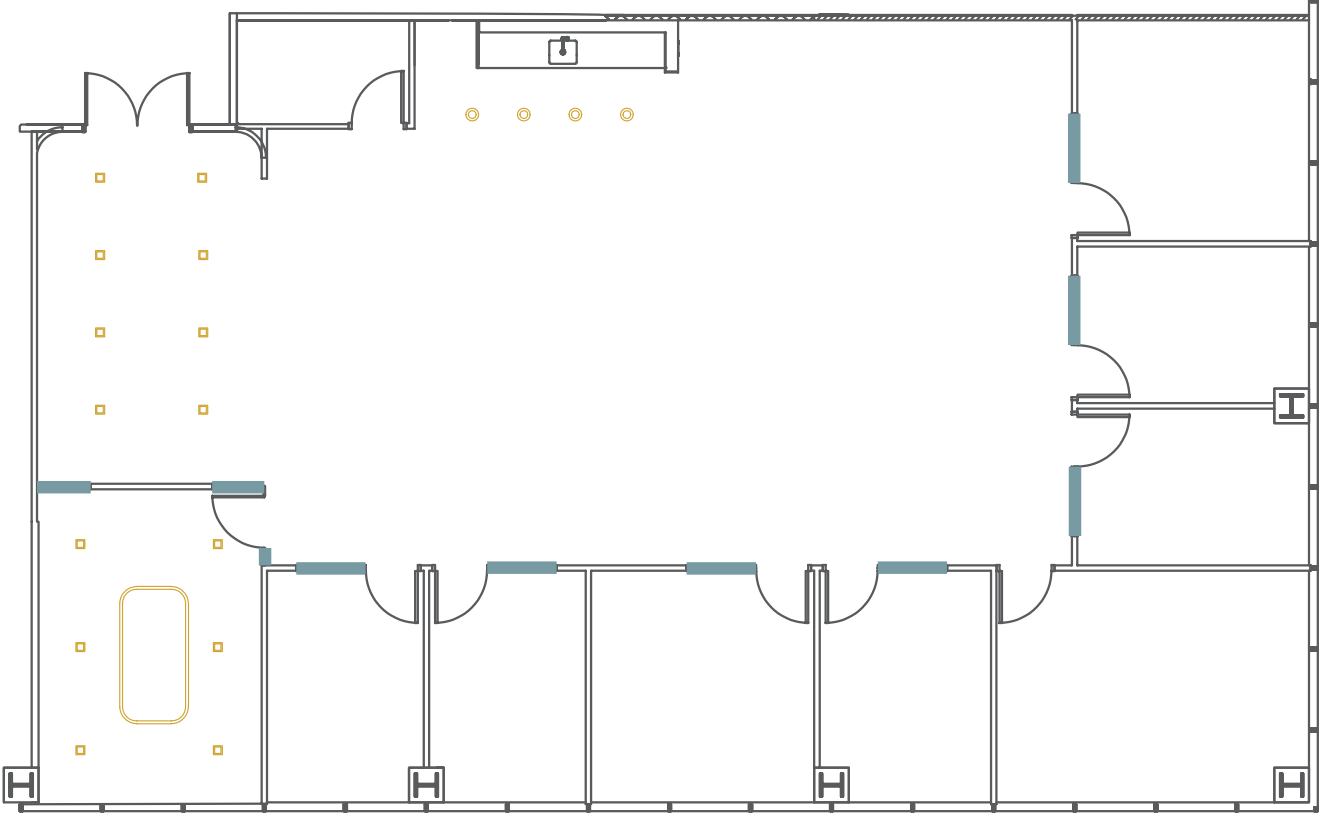
3200 Bristol Street Suite 750

Total
Size
±4,050 sqft

Team
Size
18-24

Private
Offices
8

Meeting
Room
1

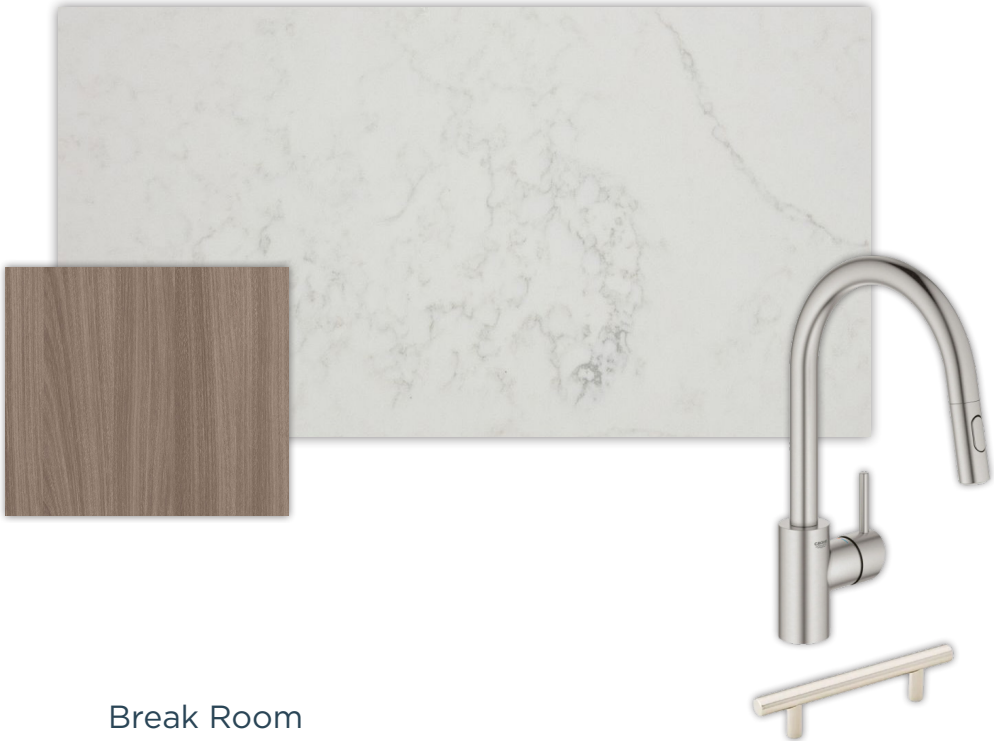


GLASS LIGHTS

finish palette



Flooring



Break Room



Paint Scheme

3200 Bristol Street

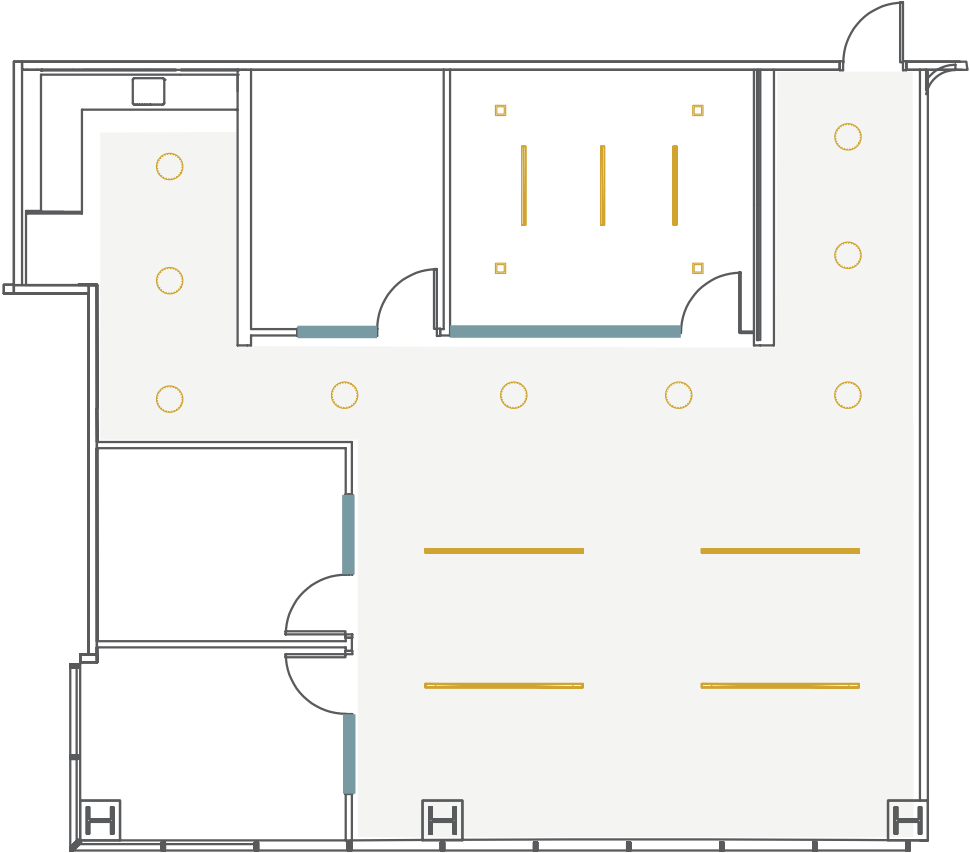
Suite 780

Total Size
±2,050 sqft

Team Size
10-12

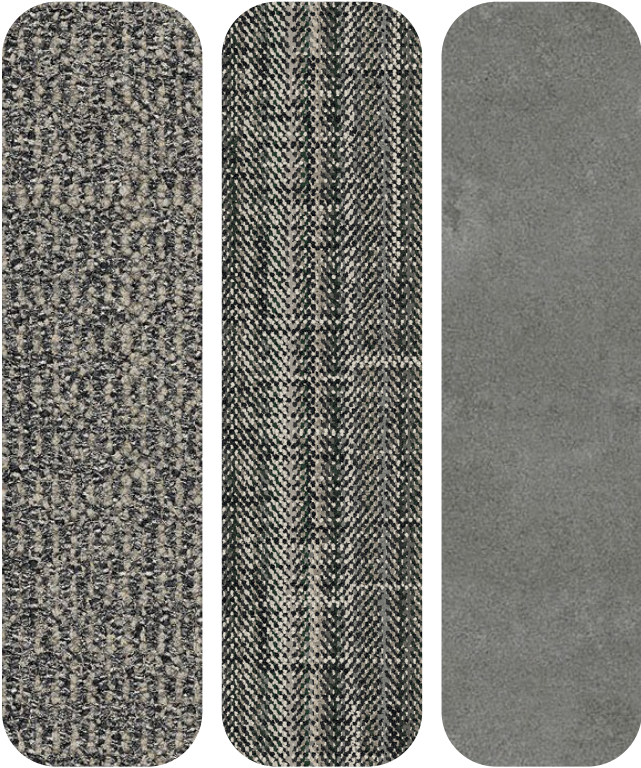
Private Offices
3

Meeting Room
1

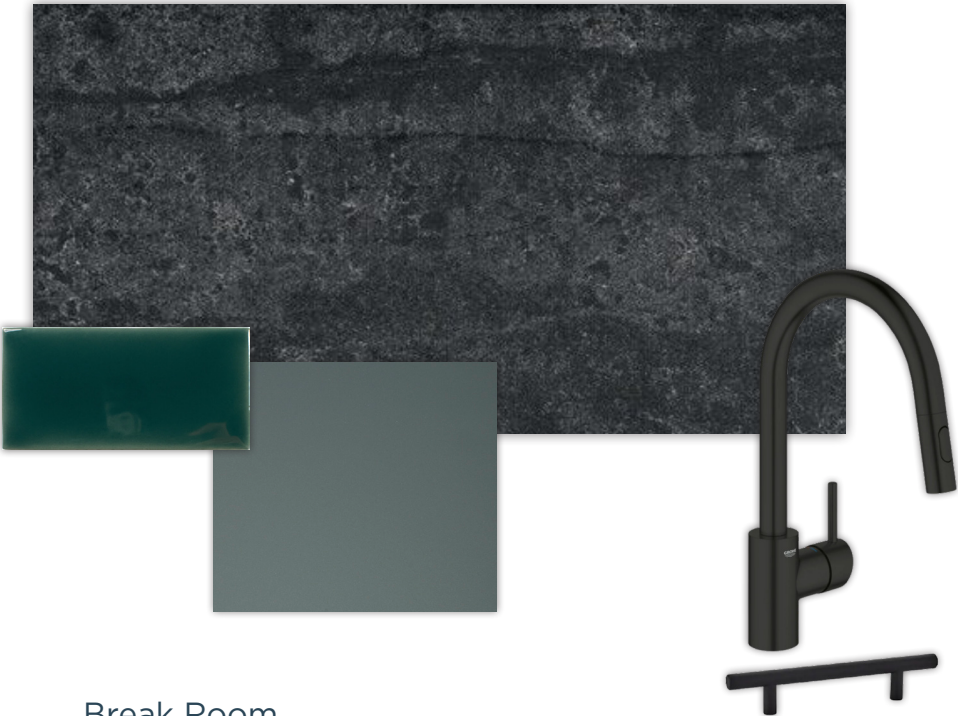


— GLASS  LIGHTS  OPEN CEILING

finish palette



Flooring

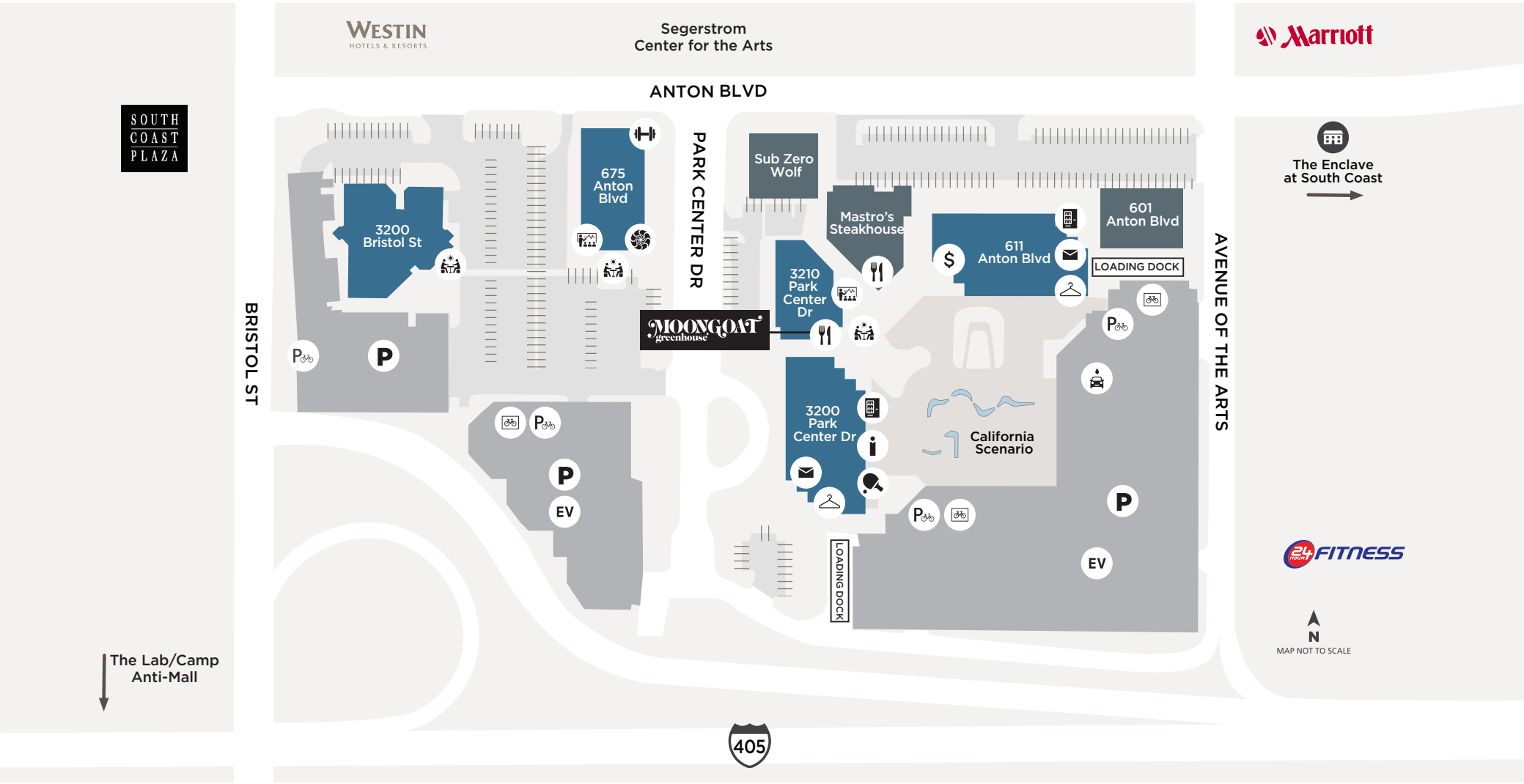



















Break Room



Paint Scheme

Pacific Arts Plaza



- | | | | | | | | | |
|---|--|--|---|--|---|---|--|--|
| 
ACE PARKING OFFICE | 
APARTMENTS | 
ATM | 
AUTO DETAILING | 
BIKE LOCKERS | 
BIKE RACKS | 
CUSTOMER RESOURCE CENTER | 
DRY CLEANING | 
EV CHARGING |
| 
FITNESS CENTER | 
GAME LOUNGE | 
MAIL ROOM | 
OUTDOOR WORKSPACE (WIFI-ENABLED) | 
PARKING STRUCTURE | 
CAFE OR RESTAURANT | 
VENDING MACHINE | 
VENUE MEETINGS & EVENTS | |



Modern Venue Meeting & Event Center

flexplus.com | 949.720.2550

All properties for lease by Irvine Management Company, a licensed real estate broker, DRE LIC. #02041810. Product and amenities are subject to availability. Images may not be to scale. Not all features available in all communities. Not a representation or warranty. Flex+ is a registered trademark of Irvine Management Company. ©2025 Irvine Management Company. All Rights Reserved. The Sunwave, Irvine Company, and Success Works Here are registered trademarks of Irvine Management Company.