



# MARSH BUSINESS PARK EAST - BLDG A

## INDUSTRIAL/FLEX FOR LEASE • FROM 1,112 - 1,988 SF

3770-3794 ARAPAHO ROAD, ADDISON, TEXAS 75001

### Availability

#### 3774 Arapaho

- 1,343 total sf
- 770 sf office
- One (1) grade level door

#### 3778 Arapaho

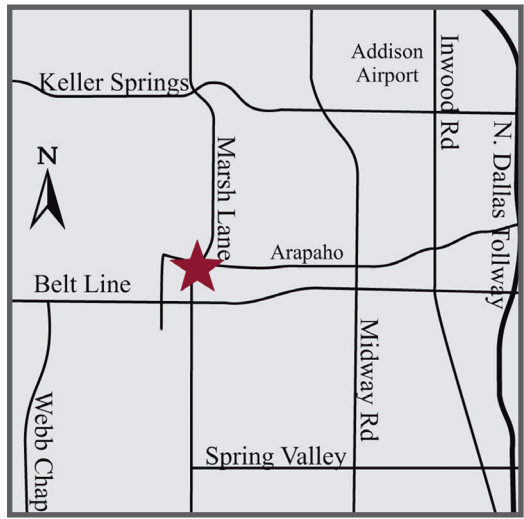
- 1,112 total sf
- 634 sf office
- 100% air conditioned
- Grade level loading

#### 3782 Arapaho

- 1,912 total sf
- 1,034 sf office
- 100% air conditioned

### Property Highlights

- 16' clear height
- Ample parking
- Minutes from Addison Airport
- Located near Addison's restaurant row
- Easy access to N. Dallas Tollway, President George Bush Turnpike and I-35



**Brian Pafford, CCIM**  
972.389.9002  
bpafford@bradford.com

#### Owned & Managed By:



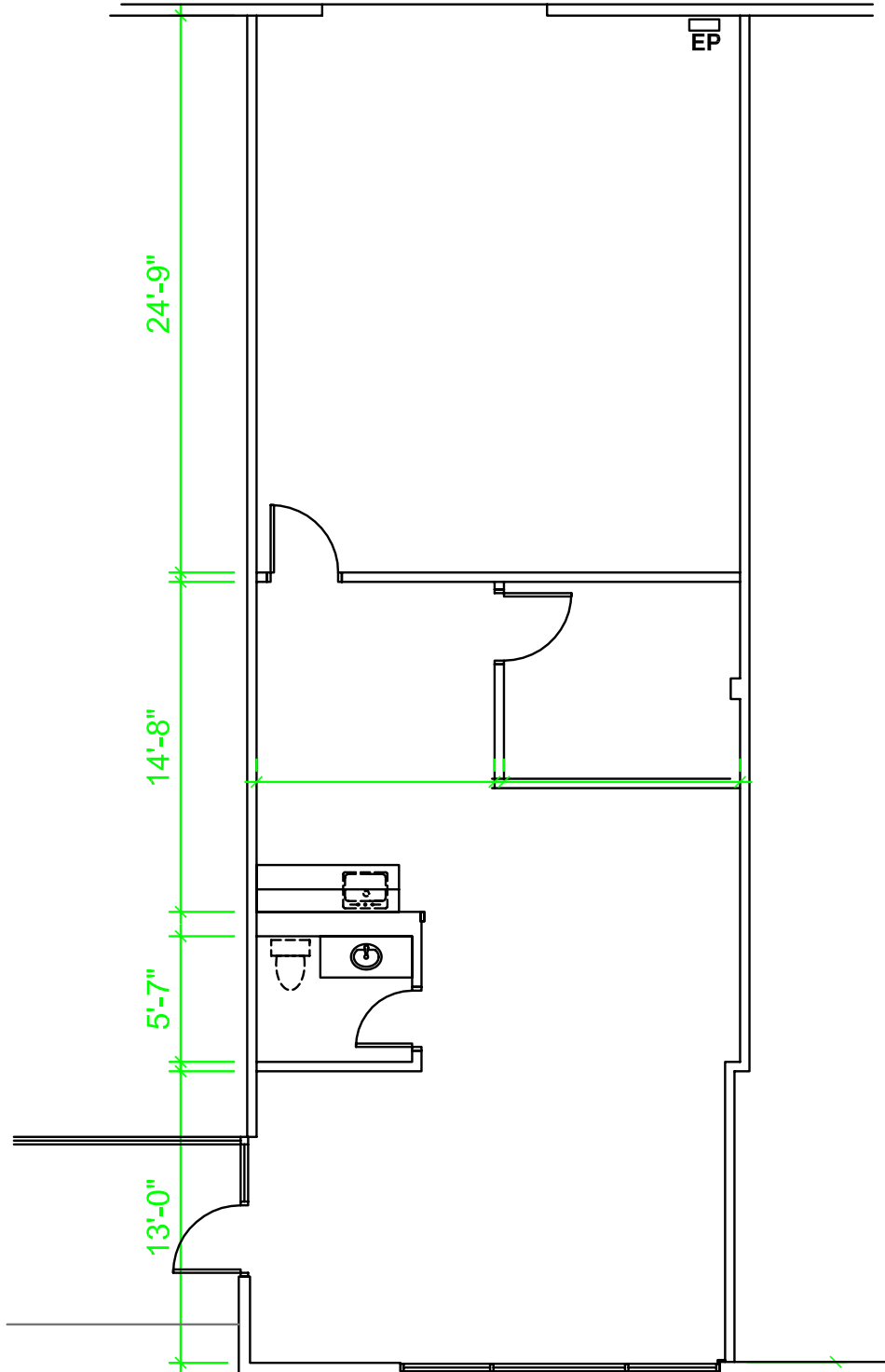
The information contained herein was obtained from sources believed reliable; however, Bradford Companies makes no guarantees, warranties, or representation as to the completeness or accuracy thereof. The presentation of this property is submitted subject to errors, omissions, change of price or conditions prior to sale or lease or withdrawal without notice.

# MARSH BUSINESS PARK EAST BLDG A

3774 ARAPAHO ROAD, ADDISON, TX 75001



1,343 Total SF

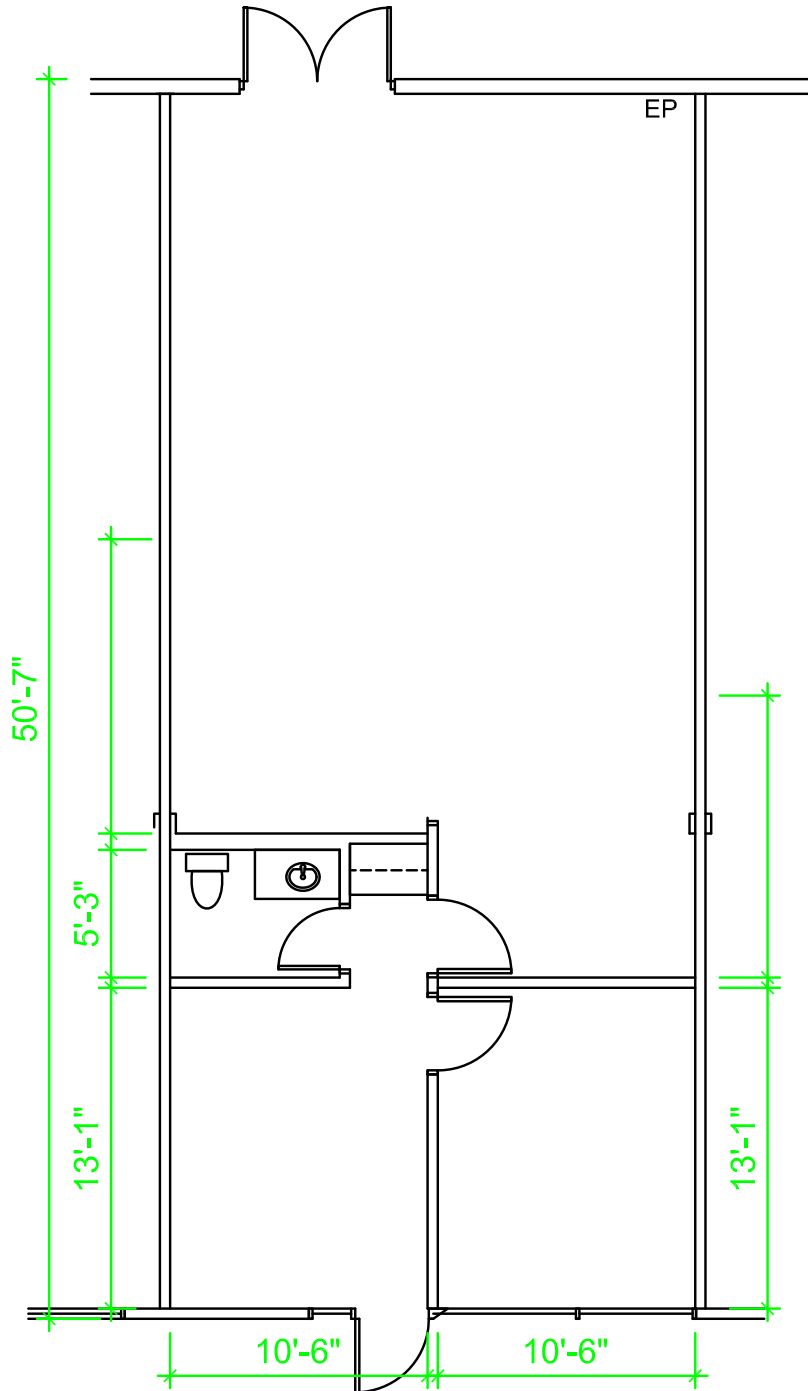


# MARSH BUSINESS PARK EAST BLDG A

3778 ARAPAHO ROAD, ADDISON, TX 75001



1,112 Total SF



# MARSH BUSINESS PARK EAST BLDG A

3782 ARAPAHO ROAD, ADDISON, TX 75001



1,912 Total SF

