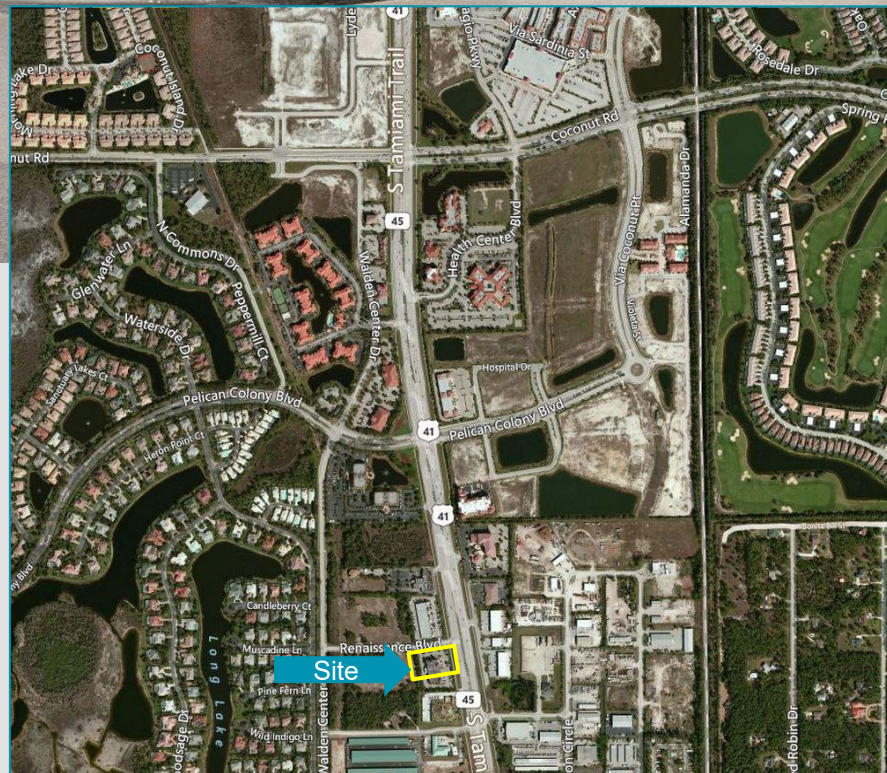


**2ND FLOOR EXECUTIVE SUITES
ABOVE WILSON LIGHTING**


BUILDING FEATURES	
LEASE RATES	\$31.00 PSF
UNIT SIZES	270 SF
YEAR BUILT	2001
ZONING	CPD
PARCEL ID	16-47-25-B2-02200.C000

Property Highlights

- Units are all on the 2nd floor, above the Wilson Lighting Store
- Includes a shared conference room, elevator, mailbox & 24/7 access. No Wi-Fi or Phone Incl.
- On-site building management
- Building fronts on US-41
- Easy access to FGCU, I-75, three regional malls, Naples & Fort Myers
- Not all uses will apply here – call for details



For more information, please contact:

GARY TASMAN
 CEO/Principal Broker
 239.489.3600
qtasman@cpswfl.com
HANNA RAY
 Director
 239.489.3600
hray@cpswfl.com

 5220 Summerlin Commons Blvd. Ste. 500
 Fort Myers, FL 33907
 239.489.3600
www.cpswfl.com

FOR LEASE

OFFICE SPACE

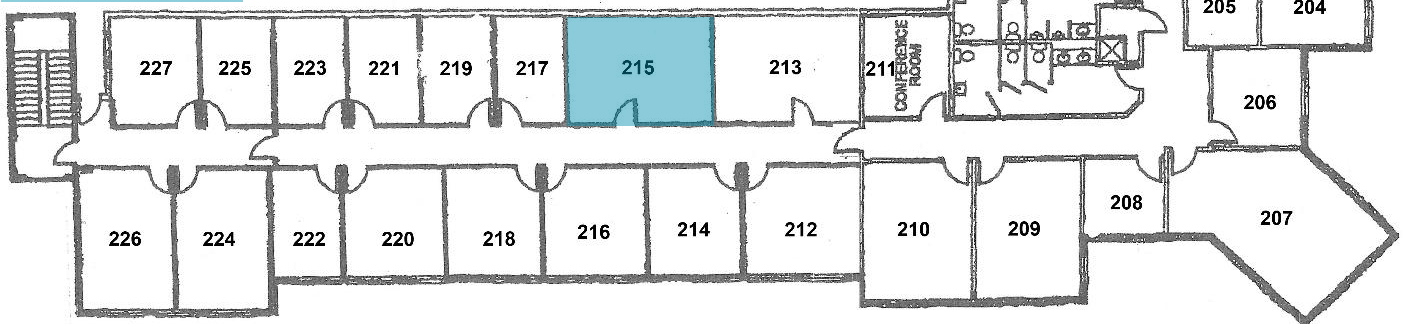
3333 Renaissance Blvd.
Bonita Springs, FL 34134



UNIT #	UNIT SIZE	MONTHLY TOTAL
215	270 SF	\$697.50

*No massage or aesthetician uses allowed

AVAILABLE SUITES



US 41 SIDE

GARY TASMAN
CEO/Principal Broker
239.489.3600
gtasman@cpswfl.com

HANNA RAY
Director
239.489.3600
hray@cpswfl.com

5220 Summerlin Commons Blvd. Ste. 500
Fort Myers, FL 33907
239.489.3600
www.cpswfl.com