

For Lease

NAIDESCO

16075 Manchester Rd.
Ellisville, MO 63011



Property Highlights



For Lease
3,150 SF



Retail
Shopping Center



Building and
Monument Signage



Lease Rate:
\$18.00 / SF, NNN

For more information, please contact:



John Sheahan, Jr., SIOR
d (314) 994 - 4176
c (314) 402 - 1031
jsheahan@naidesco.com



Emily Ackley
d (314) 994 - 4093
c (816) 560 - 6386
eackley@naidesco.com

NAIDESCO

8112 Maryland Ave, Suite 300
St. Louis, MO 63105
(314) 994 - 4800
naidesco.com

Property Features

- 3,150 SF available
- Building and monument signage available
- Ample parking
- Located at the corner of Manchester Rd. & Hutchinson Rd.
- Manchester Rd. VPD: 50,032

Lease Rate:
\$18.00 / SF, NNN

NNN Fees:
\$6.36 / SF



Demographics



POPULATION



DAYTIME
POPULATION



AVG. HH
INCOME



HOUSEHOLDS

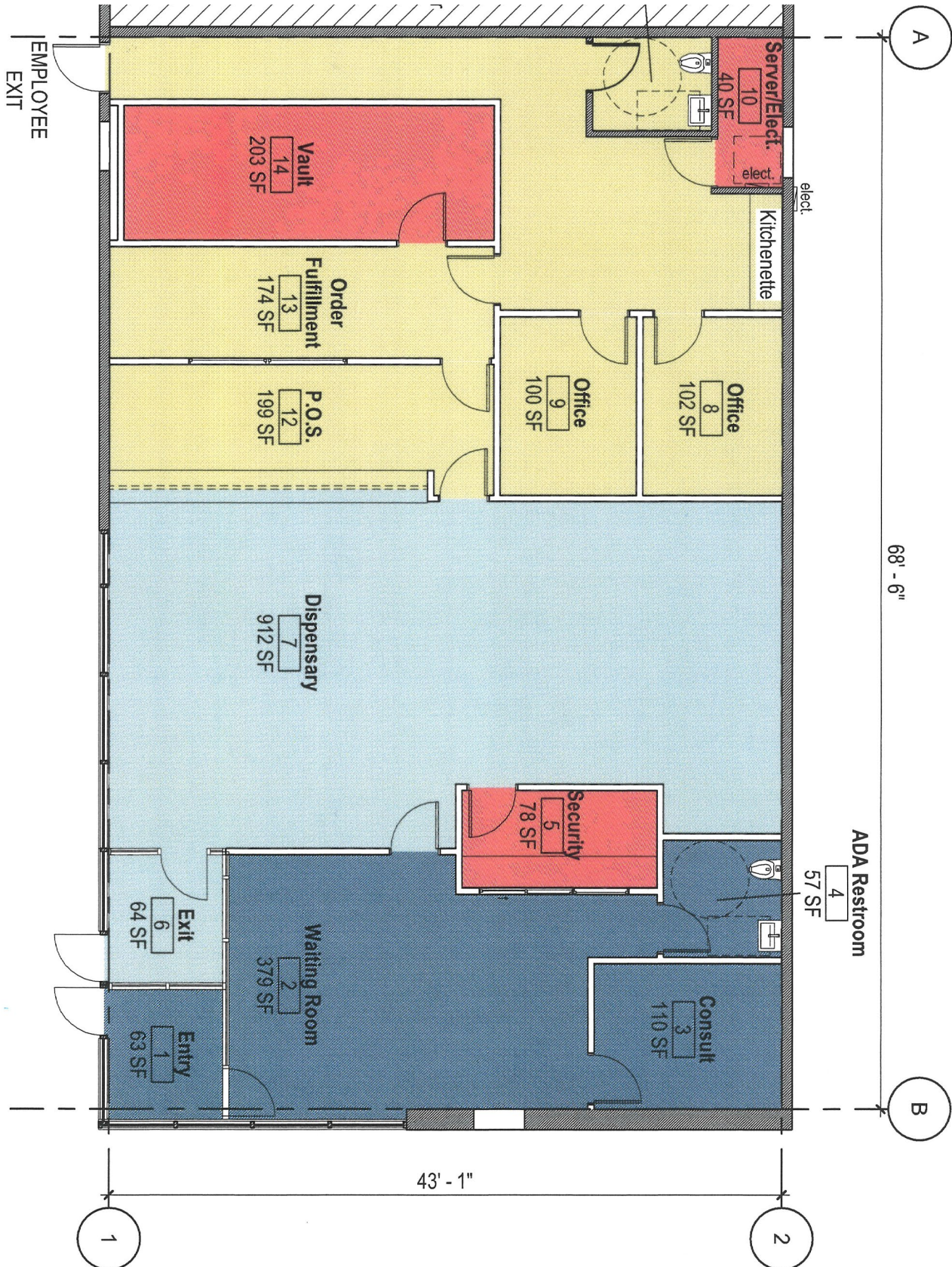
1 MILE	7,702	8,068	\$173,109	3,254
3 MILES	60,582	32,565	\$188,561	23,274
5 MILES	125,865	71,116	\$196,788	48,972

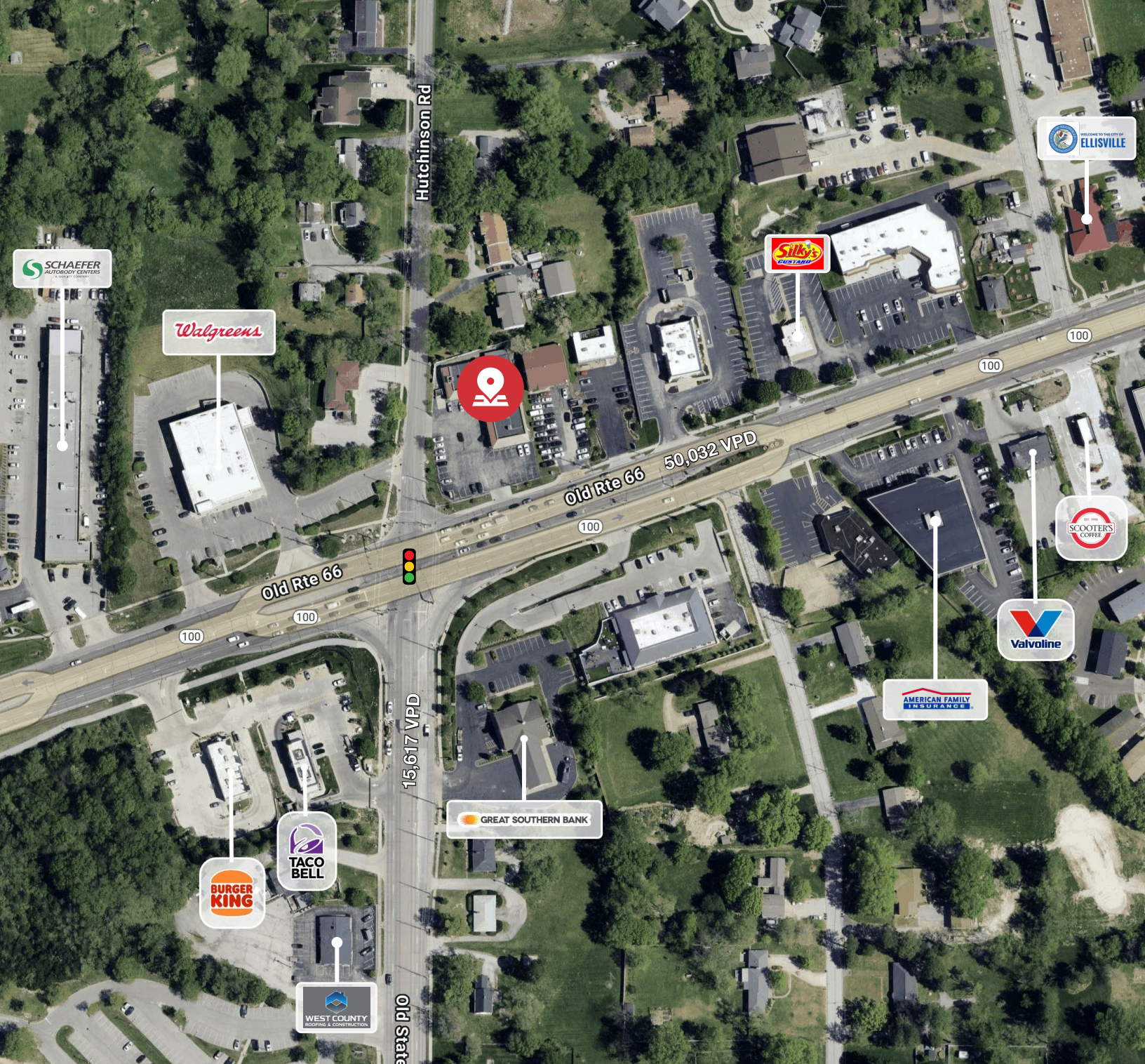
Floor Plan

Suite 10675
3,150 SF

- PUBLIC ACCESS
- PATIENT ACCESS
- RESTRICTED ACCESS - ALL EMPLOYEES
- RESTRICTED ACCESS - CERTAIN EMPLOYEES

-  NEW PARTITION
-  EXISTING PARTITION
-  NEW DOOR OR STOREFRONT WINDOW
-  EXISTING DOOR OR STOREFRONT WINDOW





John Sheahan, Jr., SIOR

d (314) 994 - 4176
 c (314) 402 - 1031
 jsheahan@naidesco.com



Emily Ackley

d (314) 994 - 4093
 c (816) 560 - 6386
 eackley@naidesco.com



NAIDESCO

8112 Maryland Ave, Suite 300
 St. Louis, MO 63105
 (314) 994 - 4800

naidesco.com