

FOR LEASE

Red 20

20 6th St NE, Minneapolis, MN 55413

Situated at the crux of Central Ave and E Hennepin Ave in Northeast, the Red 20 apartment building offers prominent storefronts for neighborhood retailers.



Building Size	222,142 SF
Year Built	2014
Space Available	1,316 SF
Rent Rate	Negotiable

- ✓ Highly visible storefronts
- ✓ Tenant sign band and personalized canopy signage option
- ✓ Commercial covered parking spaces & metered public parking
- ✓ Vibrant co-tenancy
- ✓ Internal access to residents

Red 20

About the Property

Discover the perfect blend of convenience and luxury at Red 20, a dynamic mixed-use development in the vibrant neighborhood of Northeast Minneapolis. With 1,316 square feet of street-level retail/office space available, this site offers a prime location for businesses. The building features a harmonious combination of retail space on the first floor and four additional floors housing 130 luxury apartments. Immerse yourself in the diverse urban environment and enjoy the area amenities that Red 20 brings to this thriving community.

Location

Nestled at the corner of Central Avenue NE and E Hennepin Ave, this prime location places you at the heart of the action. Just four blocks away from the scenic Mississippi River, the location has easy access to parks and walking paths, providing a perfect blend of urban and natural surroundings. Enjoy the convenience of sharing the space with esteemed co-tenants such as local favorite Saturday Dumpling, Yoga Fit, Lu's Sandwich, Timeless Tattoo, and Lulu & Lo Salon. With its excellent co-tenancy and proximity to Downtown Minneapolis, St. Paul, surrounding neighborhoods, and 35W, this location offers a strategic and vibrant setting for both businesses and residents alike.



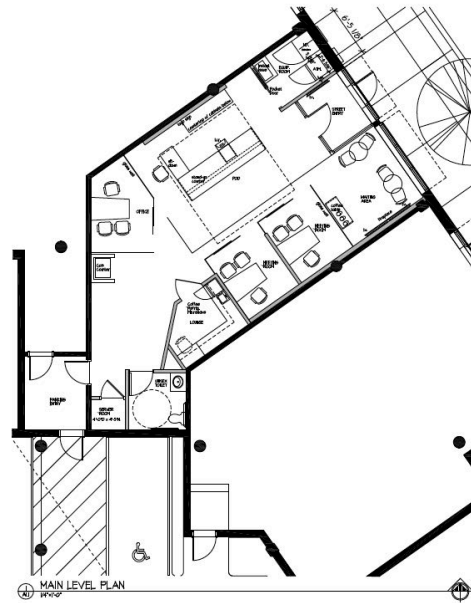
Red 20

527 Central Ave NE

Rentable Area: **1,316 RSF**

Availability: **Within 60 Days**

Lease Rate: **Negotiable**



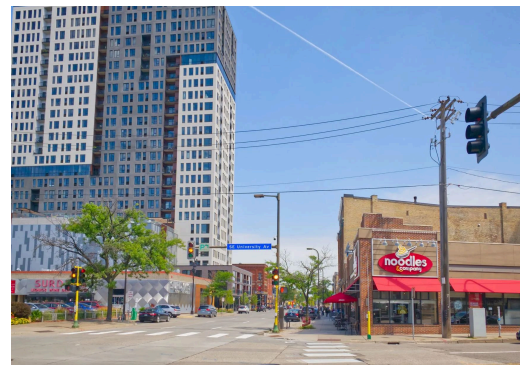
Former bank space located in Red 20 apartments on a highly visible intersection in Northeast Minneapolis.

- Inline space with personalized canopy signage option
- Functional layout with waiting area, front counter 3 semi-private meeting rooms, and lounge with kitchenette
- Single unisex restroom in place
- Modern buildout with tile flooring & wood accents
- Rear access to covered parking ramp for employees
- Co-tenants include Lu's Sandwich, Saturday Dumpling, Highbrow Studio, and YogaFit Suddios

The Neighborhood

Northeast

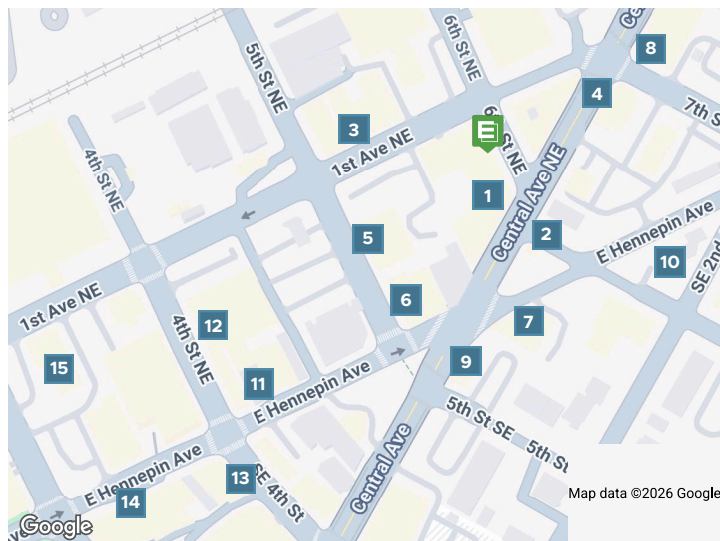
The Heart of Northeast Minneapolis provides a small-town feel nestled in the city. You will find a mix of old and new which fit together well here. The history of the area coupled with the modern amenities that abound has made this part of Northeast a desirable place to be.



 **95**
WALK SCORE

 **64**
TRANSIT SCORE

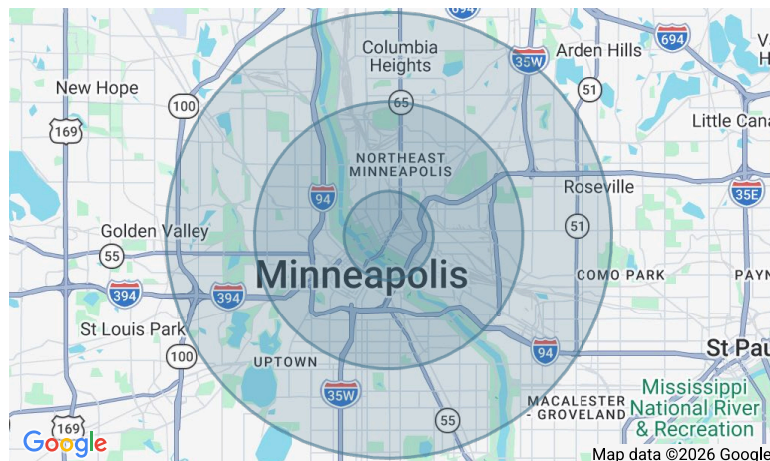
 **98**
BIKE SCORE



- 1** Lu's Sandwiches
- 2** White Castle
- 2** Slice Brothers Pizza
- 3** Zhora Darling
- 3** The Herbivorous Butcher
- 3** Harmony Coffee
- 4** Otter's Saloon
- 4** Holiday Stationstores
- 5** Gardens of Salonica
- 6** Conga Latin Bistro
- 7** Rusty Taco
- 7** Spitz - Minneapolis Restaurant | Bar - Mediterranean Food & More
- 8** Relish
- 9** Ray J's American Grill
- 10** Brasa Premium Rotisserie- Northeast Minneapolis
- 11** Mill City Running
- 11** The Terminal Bar
- 11** Stray Dog
- 12** Gorkha Palace
- 12** Ground Zero Nightclub
- 13** Whitey's Old Town Saloon
- 13** Masu Sushi & Robata
- 13** The Nomu Room
- 14** Sidebar at Surdyk's
- 14** Surdyk's Liquor & Cheese Shop
- 14** Mac's Industrial Sports Bar
- 14** Fletcher's Ice Cream & Cafe
- 15** West Photo

Demographics	1 Mile	3 Miles	5 Miles
Total population	34,996	230,348	488,377
Median age in years	30.6	31.0	33.9
Total households	18,041	103,384	214,543
Median household income	\$79,943	\$57,628	\$67,031
Average household size	1.84	2.07	2.16
Average home value	\$549,183	\$424,603	\$411,590

Data Source: ESRI/ArcGIS (2023)



Neighborhood Photos

