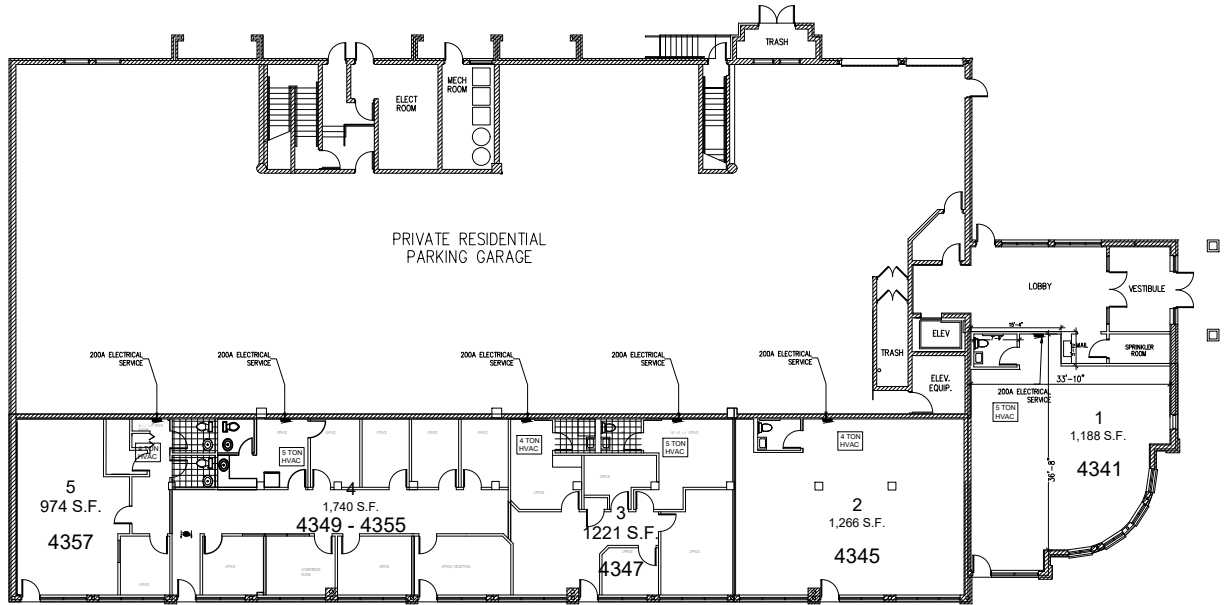




**WEST ELEVATION**

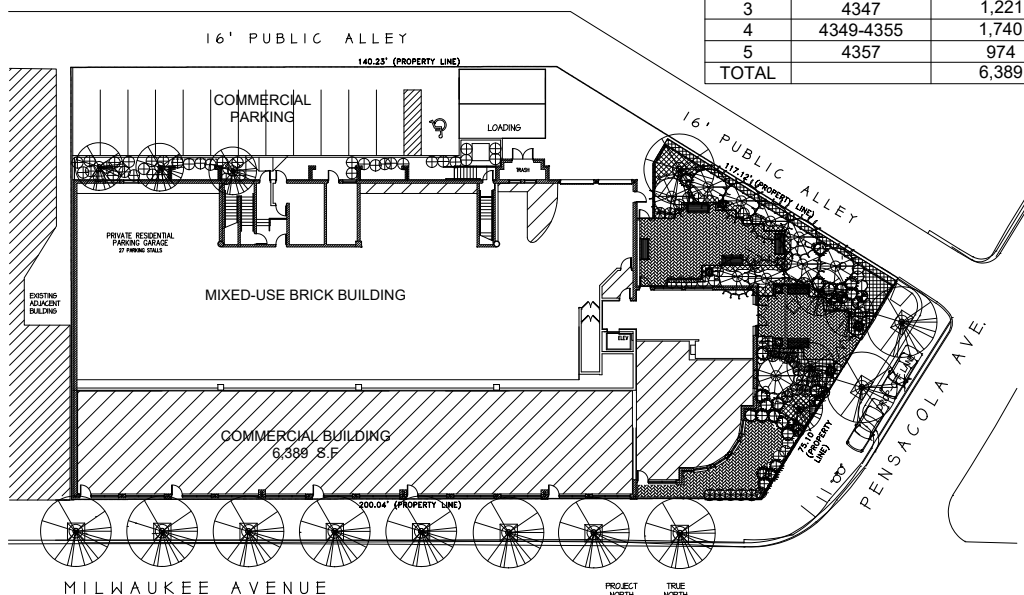


**FLOOR PLAN**

**PENSACOLA PLACE**

4339 - 4357 NORTH MILWAUKEE AVENUE CHICAGO, ILLINOIS

UNIT	ADDRESS	SIZE (S.F.)	TENANT
1	4341	1,188	VACANT
2	4345	1,266	CONGRESSMAN QUIGLEY
3	4347	1,221	VACANT
4	4349-4355	1,740	REPRESENTATIVE LAPOINTE
5	4357	974	VACANT
<b>TOTAL</b>		<b>6,389</b>	



**SITE PLAN**

