

1552

eureka road
suite 150

roseville, ca

OFFICE SUITE FOR LEASE



CBRE



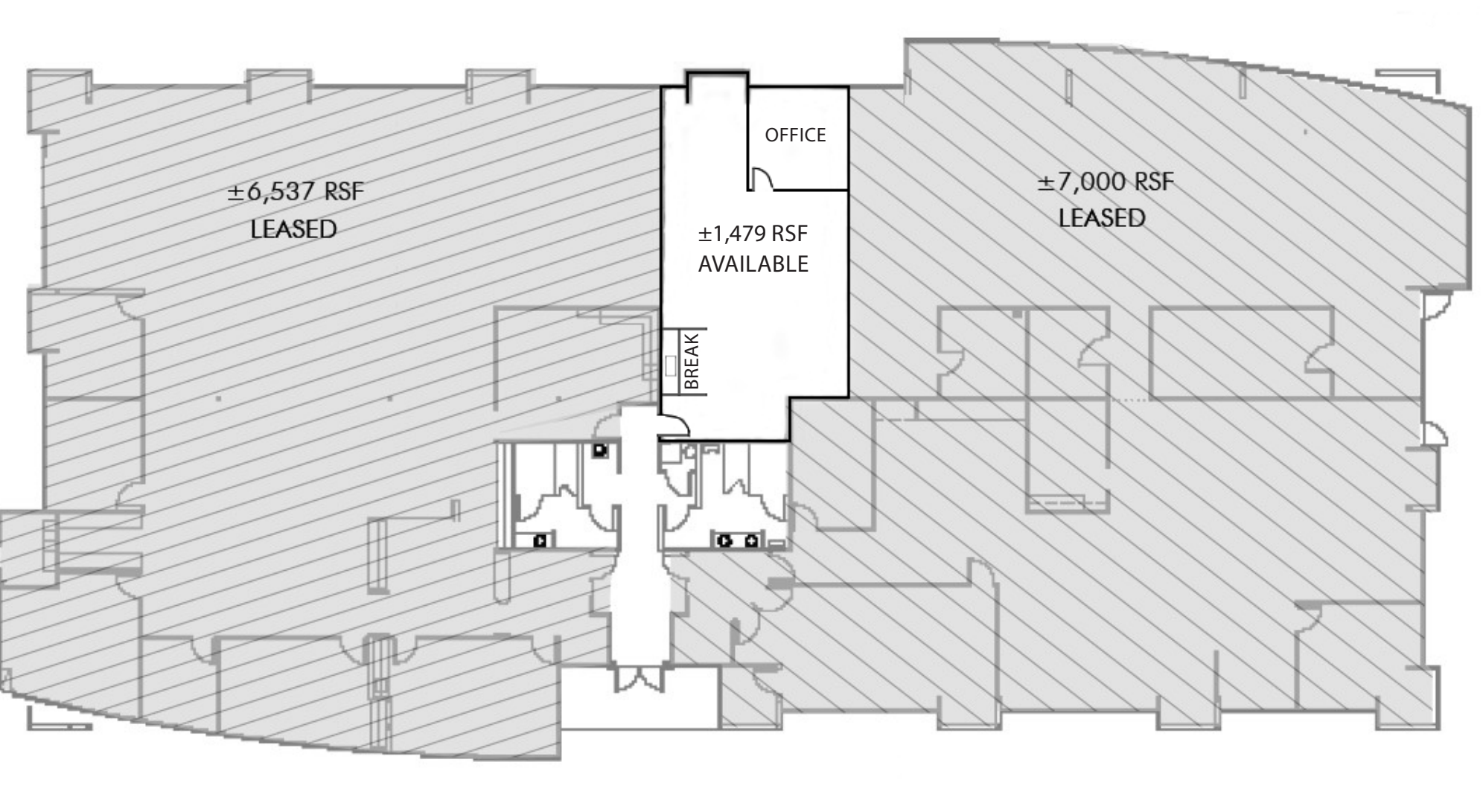
executive summary

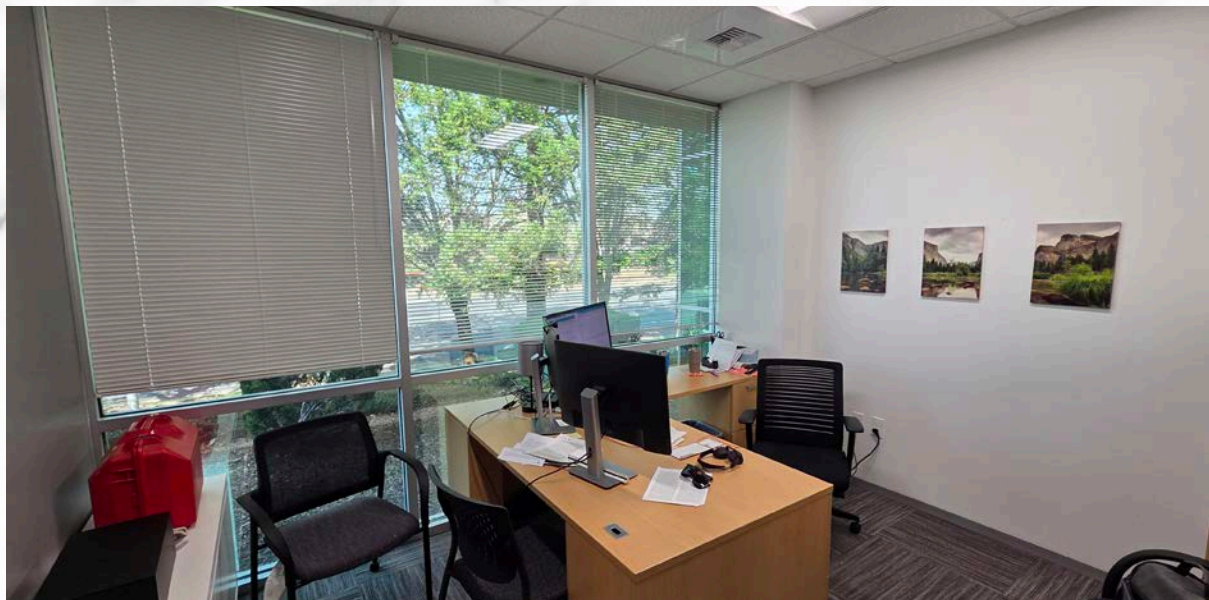
1552 Eureka Road, Suite 150

Roseville, CA 95661

- **±1,479 SF**
- **Lease Rate:** \$2.15 PSF
- **Lease Type:** Full Service Gross
- Located in the prestigious **Eureka Corporate Center**
- Single Story
- Built in **1999**
- Multi Tenant Occupancy
- **Parking Ratio:** 4/1,000 SF

BUILDING FLOOR PLAN





1552

eureka road
suite 150

CONTACT US

Scott Rush
First Vice President
+1 916 412 6170
scott.rush@cbre.com
Lic. 01228497

Phillip Larscheid
Sales Associate
+1 916 781 4848
phillip.larscheid@cbre.com
Lic. 02434984

Kevin Larscheid
Executive Vice President
+1 916 768 9329
kevin.larscheid@cbre.com
Lic. 00816790

CBRE, Inc.
1512 Eureka Road, Suite 100
Roseville, CA 95661
+1 916 781 2400

© 2026 CBRE, Inc. All rights reserved. This information has been obtained from sources believed reliable, but has not been verified for accuracy or completeness. You should conduct a careful, independent investigation of the property and verify all information. Any reliance on this information is solely at your own risk. CBRE and the CBRE logo are service marks of CBRE, Inc. All other marks displayed on this document are the property of their respective owners, and the use of such logos does not imply any affiliation with or endorsement of CBRE. Photos herein are the property of their respective owners. Use of these images without the express written consent of the owner is prohibited.



CBRE