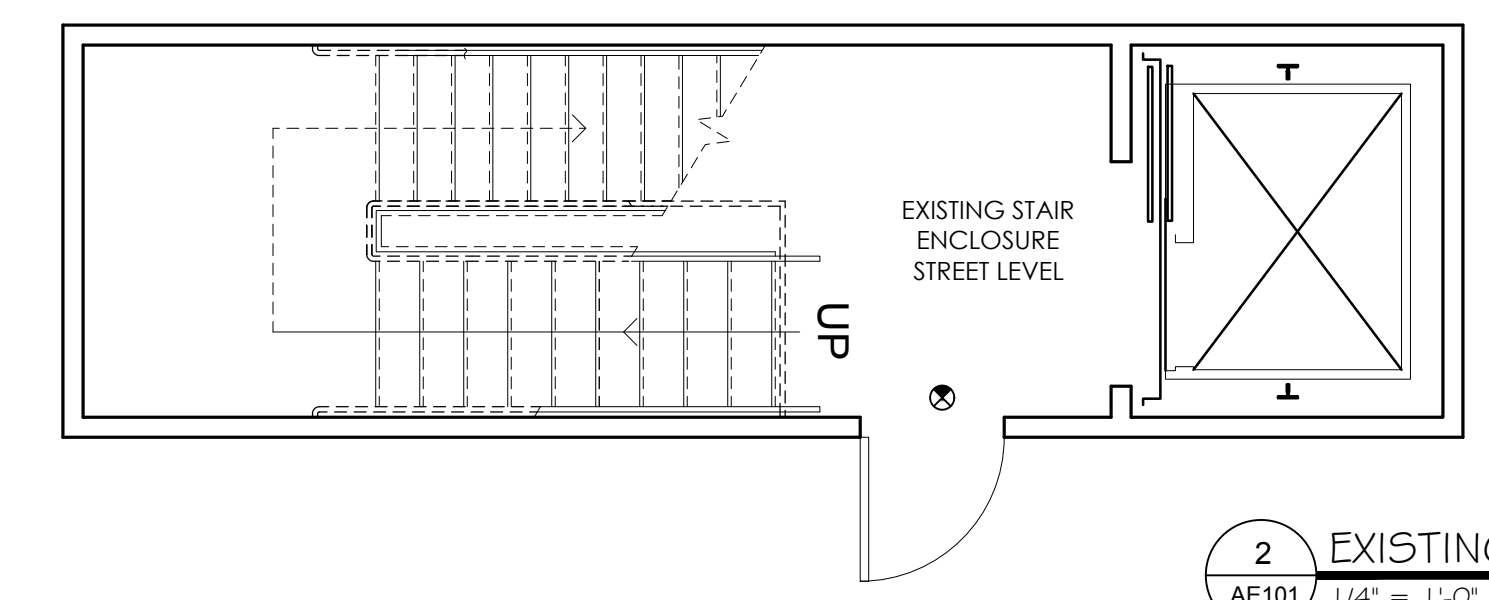


1 PROPOSED FLOOR PLAN - UPPER  
AE101 1/4" = 1'-0"



2 EXISTING STAIR ENCLOSURE - LOWER  
AE101 1/4" = 1'-0"

**LEGEND:**

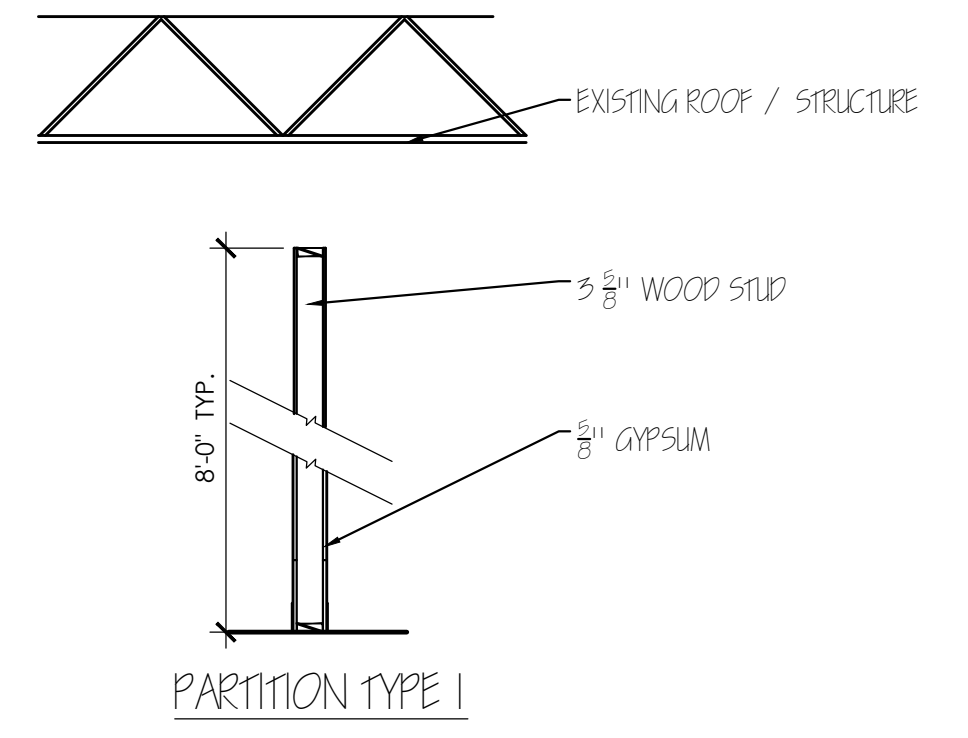
- NEW PARTITIONS
- EXISTING PARTITIONS
- DEMOLISH
- STROBES
- FIRE EXTINGUISHER
- EMERGENCY LIGHT
- EXIT SIGN
- PARTITION TYPE

**GENERAL NOTE:**

- PANIC HARDWARE TO BE ADD TO ALL EXIT DOORS.
- FIRE ALARM SYSTEM WITH VOICE EVACUATION IS REQUIRED WHERE THE CALCULATION LOAD OF THE ENTIRE SUITE IS MORE THAN 299 OCCUPANTS. BASED ON LOAD OF 318, SYSTEM IS TO BE PROVIDED.

OCCUPANCY: A-3  
OCCUPANT LOAD - (LSC TABLE 7.3.1.2)

SANCTUARY	1,856SQ.FT / 75SQ.FT
CLASS ROOM	3355SQ.FT / 205SQ.FT
TOILET ROOMS	200SQ.FT / 100SQ.FT
OFFICE	240SQ.FT / 100SQ.FT
BREAK ROOM	120SQ.FT / 15SQ.FT
MECHANICAL	110SQ.FT / 300SQ.FT
SUPPLY CLOSET	13SQ.FT / 300SQ.FT
INFANTS	92SQ.FT / 15SQ.FT
TODDLERS	249SQ.FT / 15SQ.FT
ELEMENTARY AGE	277SQ.FT / 15SQ.FT
<b>TOTAL =</b>	<b>318</b>



3 PARTITION TYPE  
AE101 1/4" = 1'-0"

ARCHITECT OF RECORD:  
THOMAS E. MORGAN, JR.  
ARCHITECT  
423 FISCHER TRAIL  
ELLIJAY, GEORGIA 30540

**MRP**  
DESIGN GROUP  
3450 Acworth Due West Road  
Building 100, Suite 120  
Kennesaw, Georgia 30144  
P. 770-917-9172  
F. 770-917-9470  
www.mrpdesign.com

RELEASED FOR CONSTRUCTION

ISSUES / REVISIONS:

DATE	DESCRIPTION	FOR PERMIT
09/21/17		

DRAWN BY: QB  
CHKD BY: TM  
PROJECT TITLE:

**ENCOUNTER CHURCH**  
3450 ACHWORTH DUE WEST ROAD SUITE 360  
KENNESAW GA, 30144

SHEET TITLE:

PROPOSED FLOOR PLAN

PROJECT NO: 17065

**A101**