



1,937 - 2,045 SF For Lease

88 Field Point Road, Greenwich, CT

Premise	Suite 102: 1,937 RSF Suite 203: 2,045 RSF		
Asking Rent	Upon Request		
Possession	All Suites: Immediate	Term	3 – 5 Years
Features	<ul style="list-style-type: none"> • Unique downtown Greenwich opportunity with a mix of built suites • 9' finished ceilings • 24/7 tenant-controlled HVAC • Prominent monument signage 	<ul style="list-style-type: none"> • Directly across from town hall • Walk to train and all amenities of Greenwich Avenue • 2.5 per 1,000 surface parking • Recent renovations include a new elevator, HVAC, windows, etc. 	

Gil Ohls
+1 203 2498600
gil.ohls@jll.com

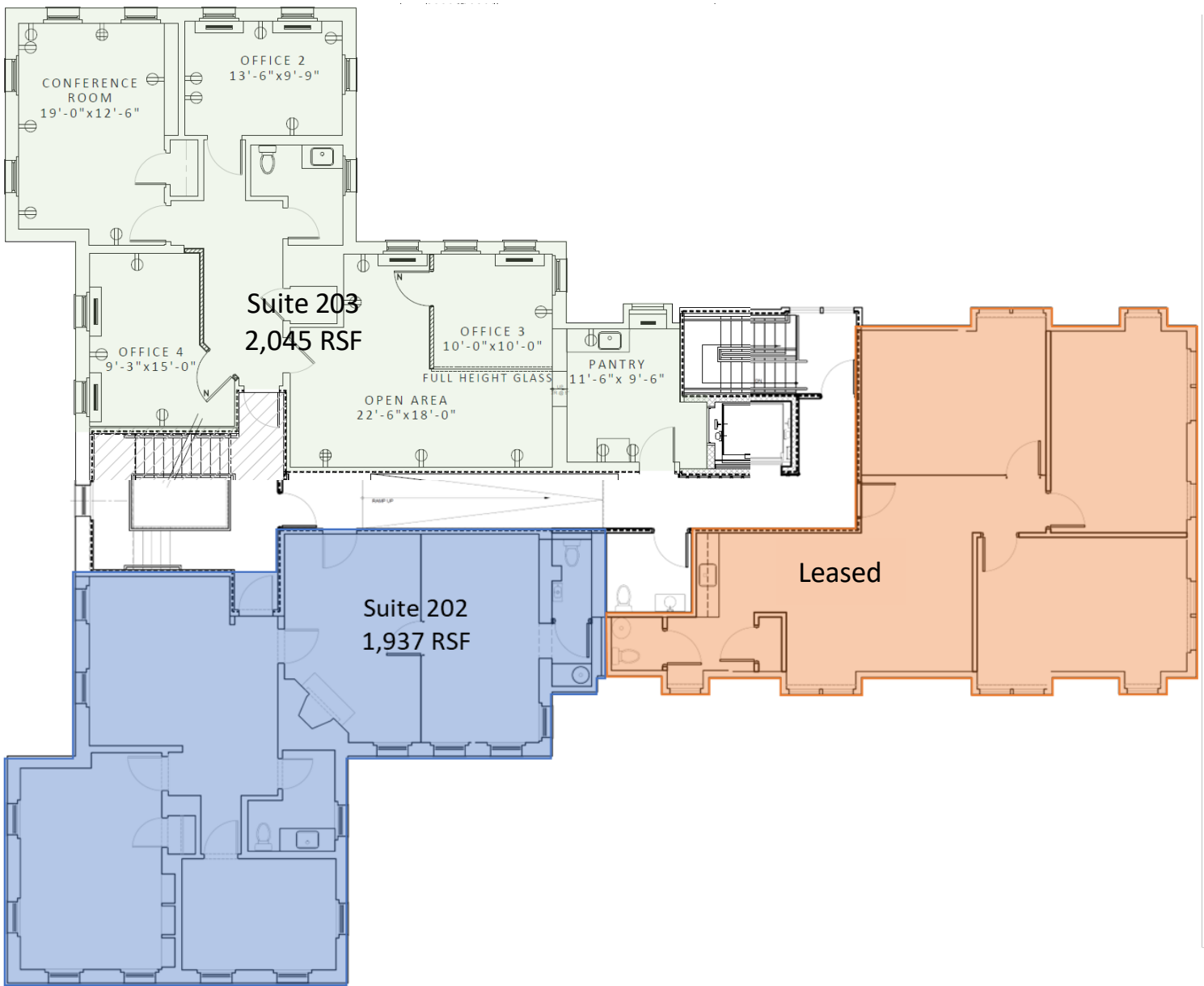
Matthew Felice
+1 203 5060905
matt.felice@jll.com

Although information has been obtained from sources deemed reliable, JLL does not make any guarantees, warranties or representations, express or implied, as to the completeness or accuracy as to the information contained herein. Any projections, opinions, assumptions or estimates used are for example only. There may be differences between projected and actual results, and those differences may be material. JLL does not accept any liability for any loss or damage suffered by any party resulting from reliance on this information. If the recipient of this information has signed a confidentiality agreement with JLL regarding this matter, this information is subject to the terms of that agreement.
©2025. Jones Lang LaSalle IP, Inc. All rights reserved.



For Lease

2nd Floor



For more information, contact:

Gil Ohls
+1 203 2498600
gil.ohls@jll.com

Matthew Felice
+1 203 5060905
matt.felice@jll.com

Although information has been obtained from sources deemed reliable, JLL does not make any guarantees, warranties or representations, express or implied, as to the completeness or accuracy as to the information contained herein. Any projections, opinions, assumptions or estimates used are for example only. There may be differences between projected and actual results, and those differences may be material. JLL does not accept any liability for any loss or damage suffered by any party resulting from reliance on this information. If the recipient of this information has signed a confidentiality agreement with JLL regarding this matter, this information is subject to the terms of that agreement.
©2025. Jones Lang LaSalle IP, Inc. All rights reserved.

