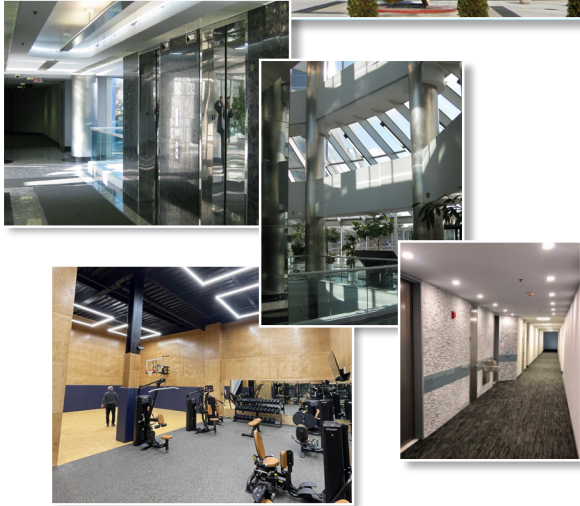


# PRIME OFFICE SPACE FOR LEASE

• 1400 old country road • westbury, new york



## LOCATION

- westbury, new york 11590
- central nassau submarket

## SPACE AVAILABLE

- 2,692 square feet | fourth floor | N-407
- 9,881-20,839 square feet | third floor |
- 2,500-9,990 square feet | second floor | N-203

## Multi-Million Dollar Renovation Completed

• 4 story building • 250,000 square feet •

### COMMENTS:

- Conveniently located off the Wantagh Parkway, Old Country Road exit ramp
- NICE bus stop at corner
- 4:1000 parking ratio with covered parking deck
- 24 / 7 building access
- Fitness center recently updated & renovated
- Café with seating for 50, serving hot & cold foods
- Conference rooms available for tenants use

### FOR INFORMATION CONTACT:

**ROGER W. WOOSTER**

401 broad hollow road • suite L1  
melville, new york 11747

main - 516.935.8300 direct - 516.441.7230

roger.wooster@therochlinorganization.com

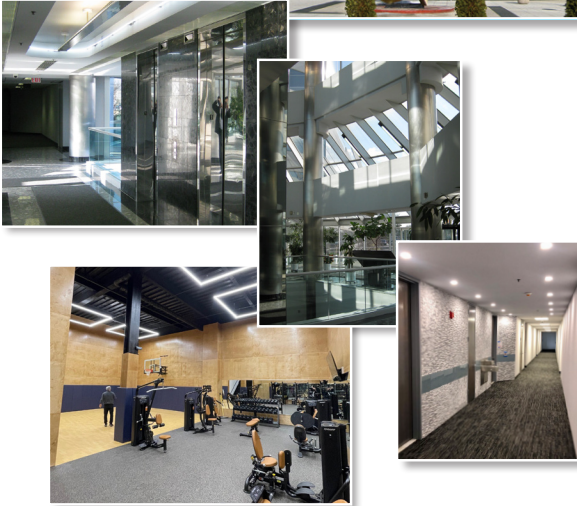
[www.therochlinorganization.com](http://www.therochlinorganization.com)



All information furnished is from sources deemed reliable. No representation or warranty is made as to the accuracy thereof and is submitted subject to errors, omissions, change of price, prior sales or lease, or withdrawal without notice, and any negligence on this part of the writer.

## PRIME OFFICE SPACE FOR LEASE

• 1400 old country road • westbury, new york



### LOCATION

- westbury, new york 11590
- central nassau submarket

### SPACE AVAILABLE

- 2,692 square feet | fourth floor | N-407
- 9,881-20,839 square feet | third floor |
- 2,500-9,990 square feet | second floor | N-203

### Multi-Million Dollar Renovation Completed

• 4 story building • 250,000 square feet •

### COMMENTS:

- Conveniently located off the Wantagh Parkway, Old Country Road exit ramp
- NICE bus stop at corner
- 4:1000 parking ratio with covered parking deck
- 24 / 7 building access
- Fitness center recently updated & renovated
- Café with seating for 50, serving hot & cold foods
- Conference rooms available for tenants use

### FOR INFORMATION CONTACT:

**ADAM E. ROCHLIN**

401 broad hollow road • suite L1  
melville, new york 11747

main - 516.935.8300 direct - 516.441.7373

adam.rochlin@therochlinorganization.com

[www.therochlinorganization.com](http://www.therochlinorganization.com)

