



649 S County Center Dr | Visalia, CA

Property For Sale

1005 N Demaree Street
Visalia, California 93291
O | 559.754.3020
F | 559.429.4016
www.mdgre.com

GRAHAM | & ASSOCIATES

Matt Graham
Lic# 01804235
www.mdgre.com

to learn more, visit: www.mdgre.com

PROPERTY DETAILS

Address: 649 S. County Center Drive | Visalia, CA

APN: 095-010-063

Building Size: 21,482 +/- Sq. Ft.

Lot Size: 2.18 +/- Acres

Zoning CSO

Minimun Bid Price: \$5,900,000.00



Additional Comments:

Well-maintained single story office building in a professionally managed shopping center, Visalia Marketplace. Currently used as an educational facility, it would be ideal for a variety of uses. Ample parking surrounding the building. Extremely well located off of W Noble Ave with direct access to Highway 198. Please call for further details.



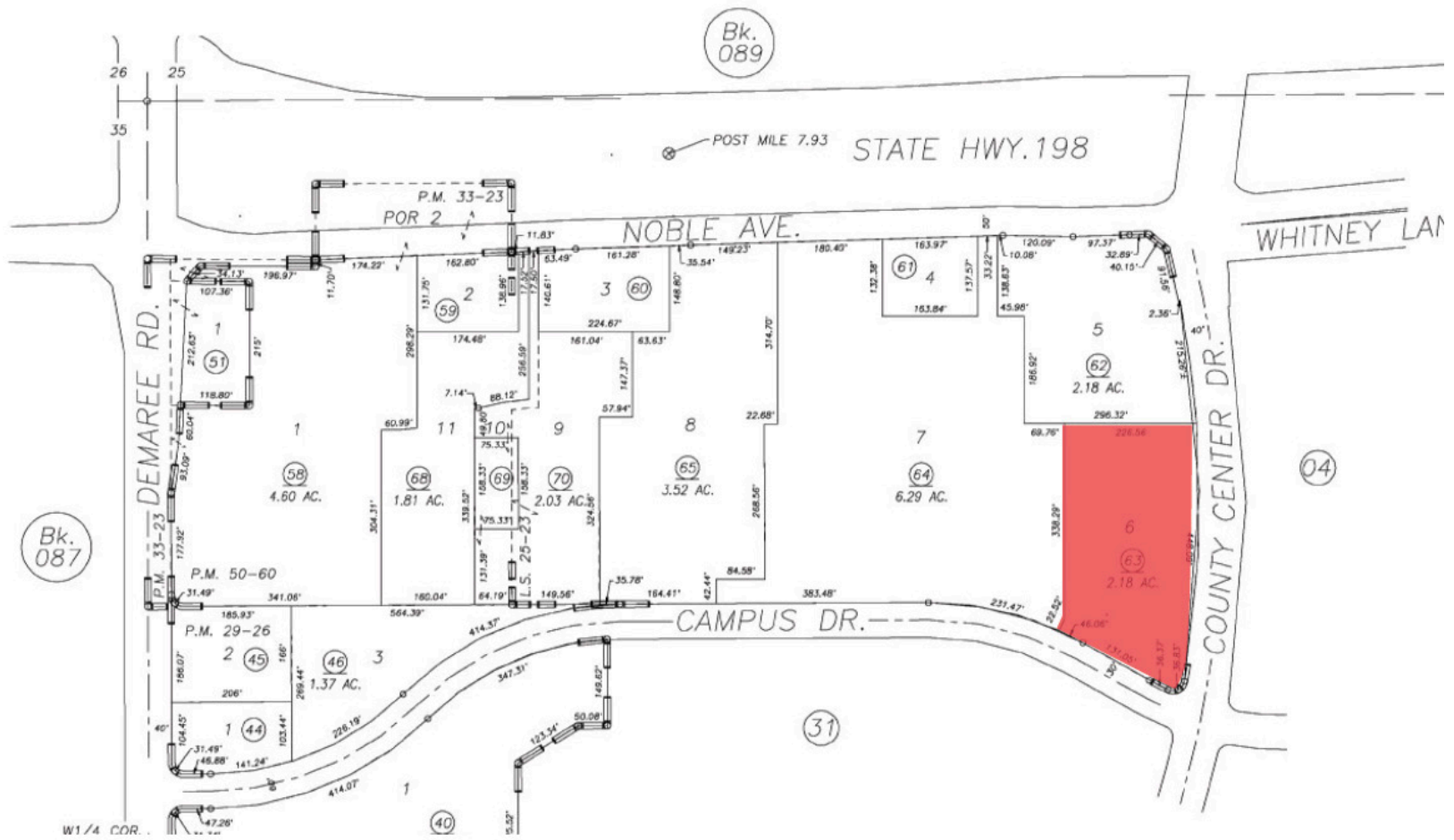
Contact Broker:
Matt Graham
Lic# 01804235

to learn more, visit: www.mdgre.com

1005 N Demaree Street
Visalia, California 93291
O | 559.754.3020

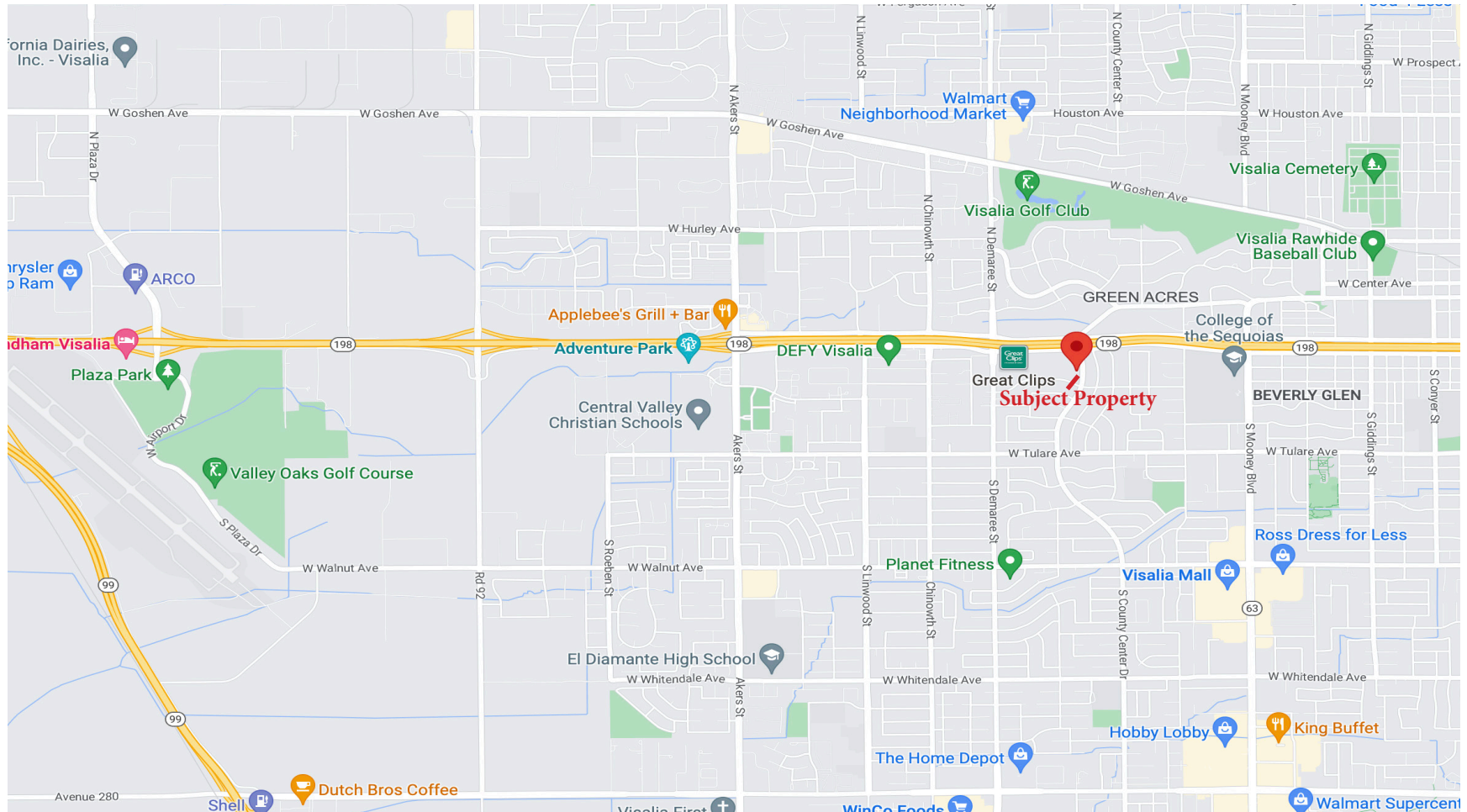
PLEASE NOTE: ALL INFORMATION AND REPRESENTATION MADE HEREIN, WHILE NOT GUARANTEED, HAVE BEEN SECURED FROM SOURCES WE BELIEVE TO BE RELIABLE, HOWEVER, THEY ARE NOT WARRANTED BY MATT GRAHAM & ASSOCIATES AND ARE SUBJECT TO CHANGE WITHOUT NOTICE.

PARCEL MAP



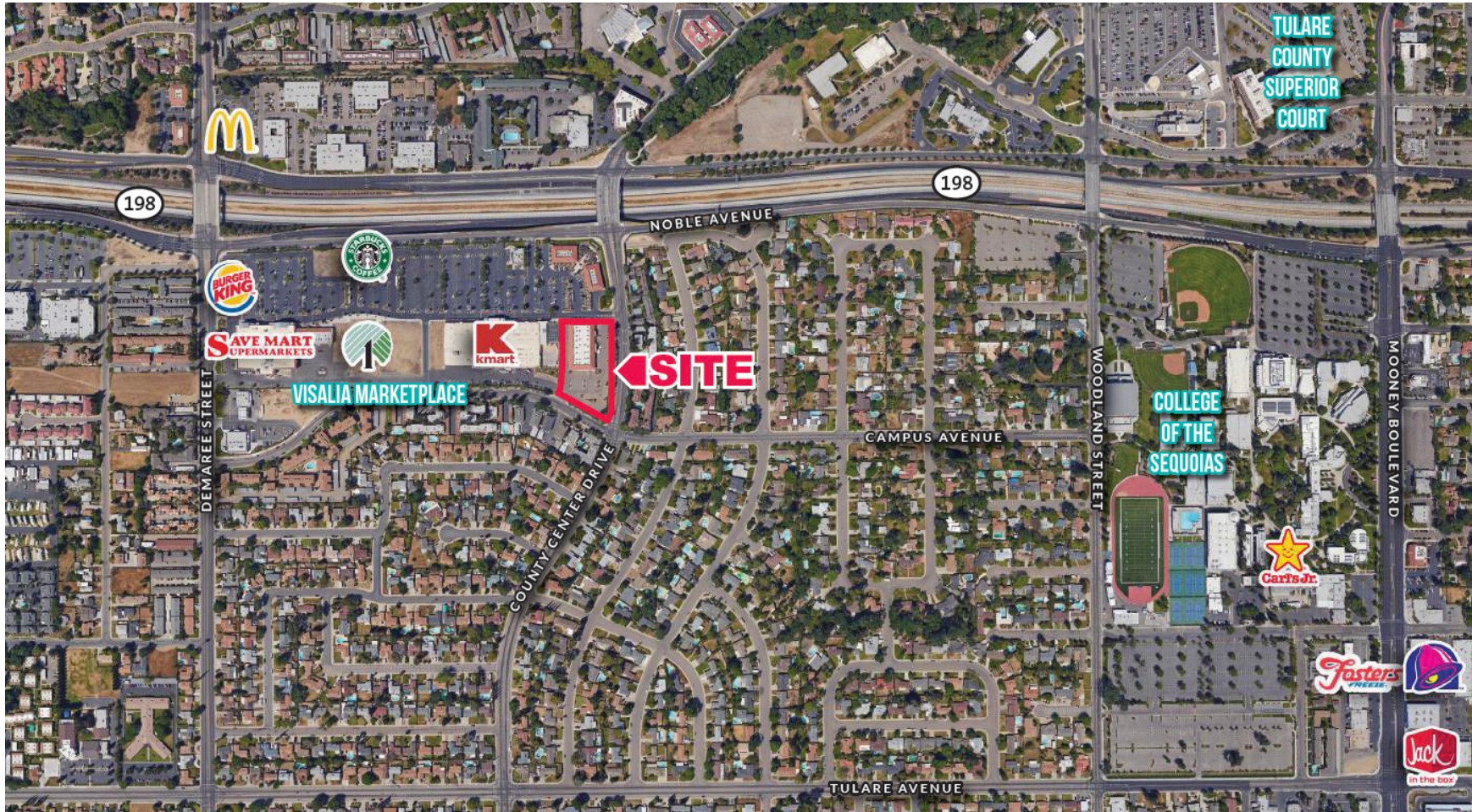
PLEASE NOTE: ALL INFORMATION AND REPRESENTATION MADE HEREIN, WHILE NOT GUARANTEED, HAVE BEEN SECURED FROM SOURCES WE BELIEVE TO BE RELIABLE, HOWEVER, THEY ARE NOT WARRANTED BY MATT GRAHAM & ASSOCIATES AND ARE SUBJECT TO CHANGE WITHOUT NOTICE.

LOCATION MAP



PLEASE NOTE: ALL INFORMATION AND REPRESENTATION MADE HEREIN, WHILE NOT GUARANTEED, HAVE BEEN SECURED FROM SOURCES WE BELIEVE TO BE RELIABLE, HOWEVER, THEY ARE NOT WARRANTED BY MATT GRAHAM & ASSOCIATES AND ARE SUBJECT TO CHANGE WITHOUT NOTICE.

PROPERTY LAYOUT



PLEASE NOTE: ALL INFORMATION AND REPRESENTATION MADE HEREIN, WHILE NOT GUARANTEED, HAVE BEEN SECURED FROM SOURCES WE BELIEVE TO BE RELIABLE, HOWEVER, THEY ARE NOT WARRANTED BY MATT GRAHAM & ASSOCIATES AND ARE SUBJECT TO CHANGE WITHOUT NOTICE.

PROPERTY PHOTOS



PLEASE NOTE: ALL INFORMATION AND REPRESENTATION MADE HEREIN, WHILE NOT GUARANTEED, HAVE BEEN SECURED FROM SOURCES WE BELIEVE TO BE RELIABLE, HOWEVER, THEY ARE NOT WARRANTED BY MATT GRAHAM & ASSOCIATES AND ARE SUBJECT TO CHANGE WITHOUT NOTICE.

PROPERTY PHOTOS



PLEASE NOTE: ALL INFORMATION AND REPRESENTATION MADE HEREIN, WHILE NOT GUARANTEED, HAVE BEEN SECURED FROM SOURCES WE BELIEVE TO BE RELIABLE, HOWEVER, THEY ARE NOT WARRANTED BY MATT GRAHAM & ASSOCIATES AND ARE SUBJECT TO CHANGE WITHOUT NOTICE.