

MEDICAL PLAZA: 1036 MAIN STREET PATERSON 07503



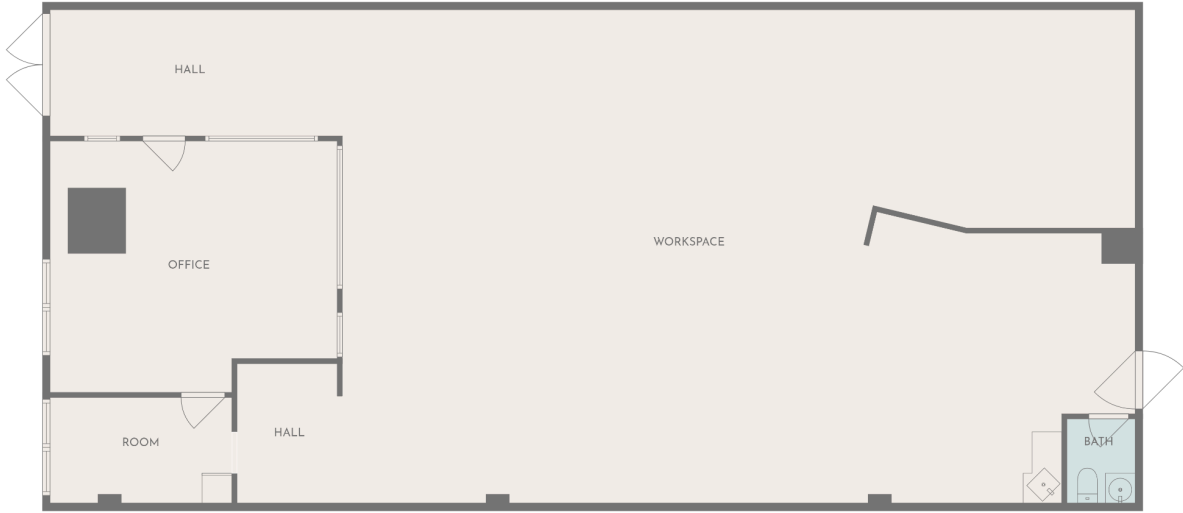
Property Overview:

A medical plaza with a retail pharmacy that has been there since 1996, doctors that have been there since the early 2000s, down the road from St Joseph's hospital, and has a very strong referral network.

Offering summary:

1. 2,400 sqft
2. Available immediately
3. Requires build out
4. Parking available in the back of the building
5. Additional private parking for tenants and their staff

Floor Plan:



FLOOR PLAN CREATED BY CUBICASA APP. MEASUREMENTS DEEMED HIGHLY RELIABLE BUT NOT GUARANTEED.

Additional Parking for Tenants and Staff:

