

# FOR SUBLEASE | 1,380 SF LEVAN MEDICAL CENTER



**15130-15148 LEVAN ROAD**  
**LIVONIA, MI 48154**

## PROPERTY HIGHLIGHTS:

- First class medical facility
- Directly across from St. Mary's Hospital
- 1,380 SF corner suite
- Three exam rooms
- Immediate occupancy
- \$2,500/Month
- Separately metered utilities
- Available Option for Equity in Partnership
- Basement storage

The information provided herein along with any attachment(s) was obtained from sources believed to be reliable, however, Friedman Real Estate makes no guarantees, warranties, or representations as to the completeness or accuracy of such information and legal counsel is advised. All information provided is subject to verification and no liability for reliance on such information or errors or omissions is assumed. The presentation of this property is submitted subject to errors, omissions, change of price or conditions, prior sale or lease, or withdrawal without notice. Copyright © 2024 Friedman Real Estate. All rights reserved.

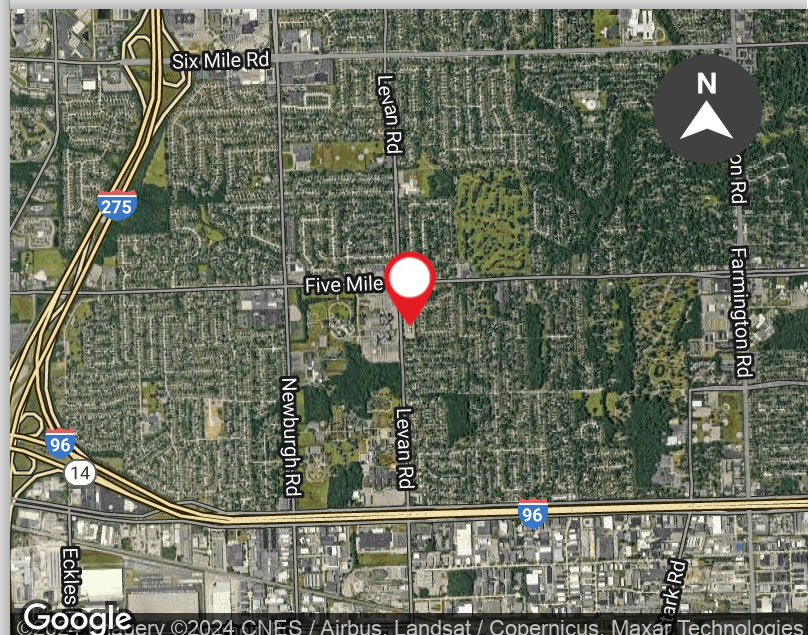
FOR MORE INFORMATION PLEASE CONTACT:



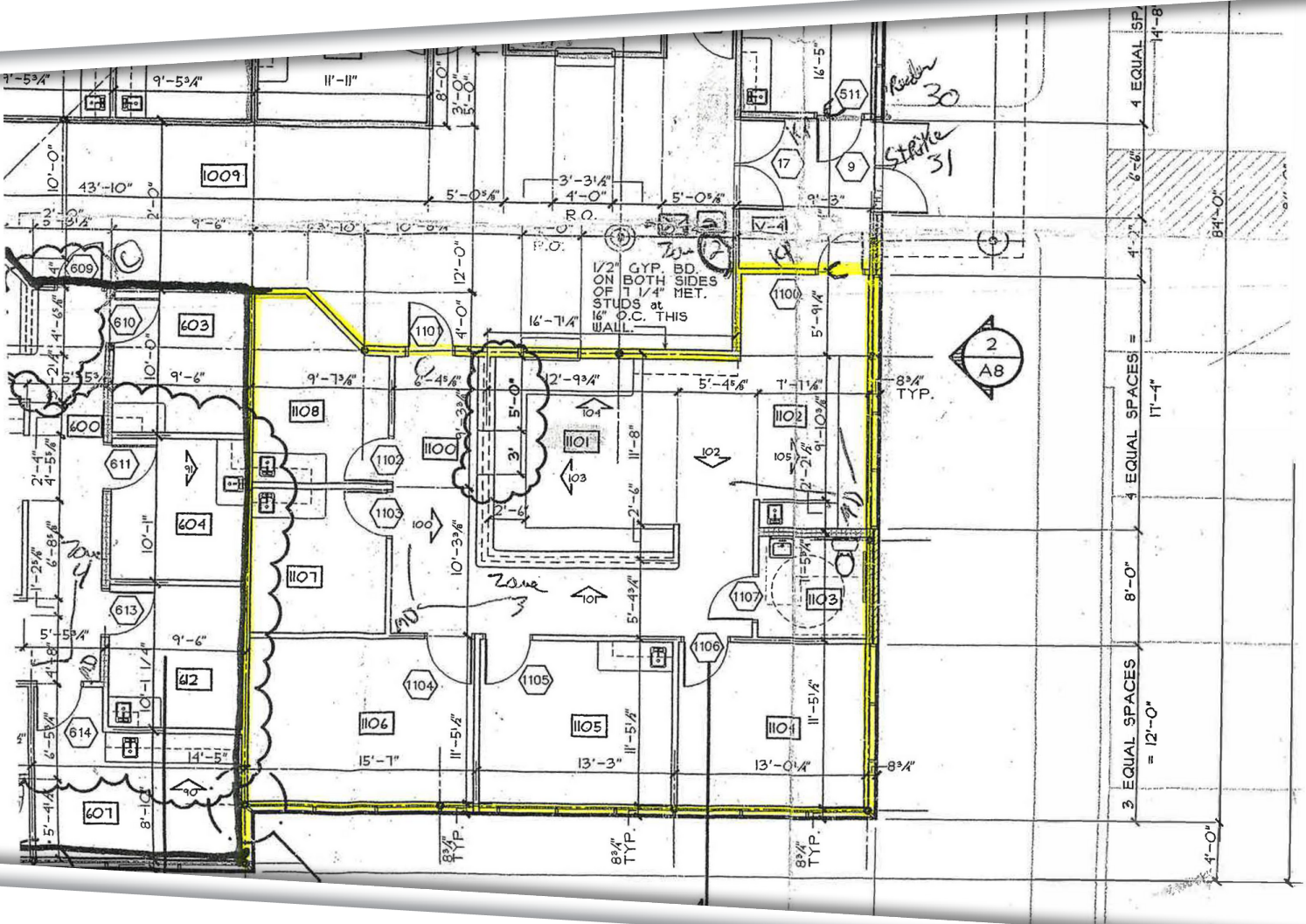
**ROBERT MOON**  
robert.moon@freg.com

**248.324.2000**

**eCODE 053**



**LEVAN MEDICAL CENTER**  
**SUITE 42 FLOOR PLAN**



FOR MORE INFORMATION PLEASE CONTACT:



**ROBERT MOON**  
robert.moon@freg.com