

MEDICAL
OFFICE
SPACE

FOR
LEASE

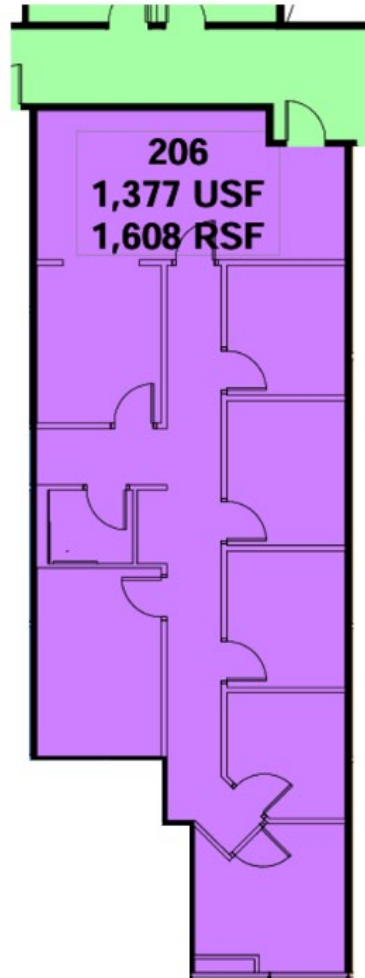
4100 LAKE OTIS PKWY
ANCHORAGE, AK



UMED ANCHORAGE MEDICAL OFFICE SPACE

\$1.60/RSF

Suite 206 – 1,608 RSF



2nd Floor Medical Plaza

NNN Lease

Private Restroom

Mountain Views

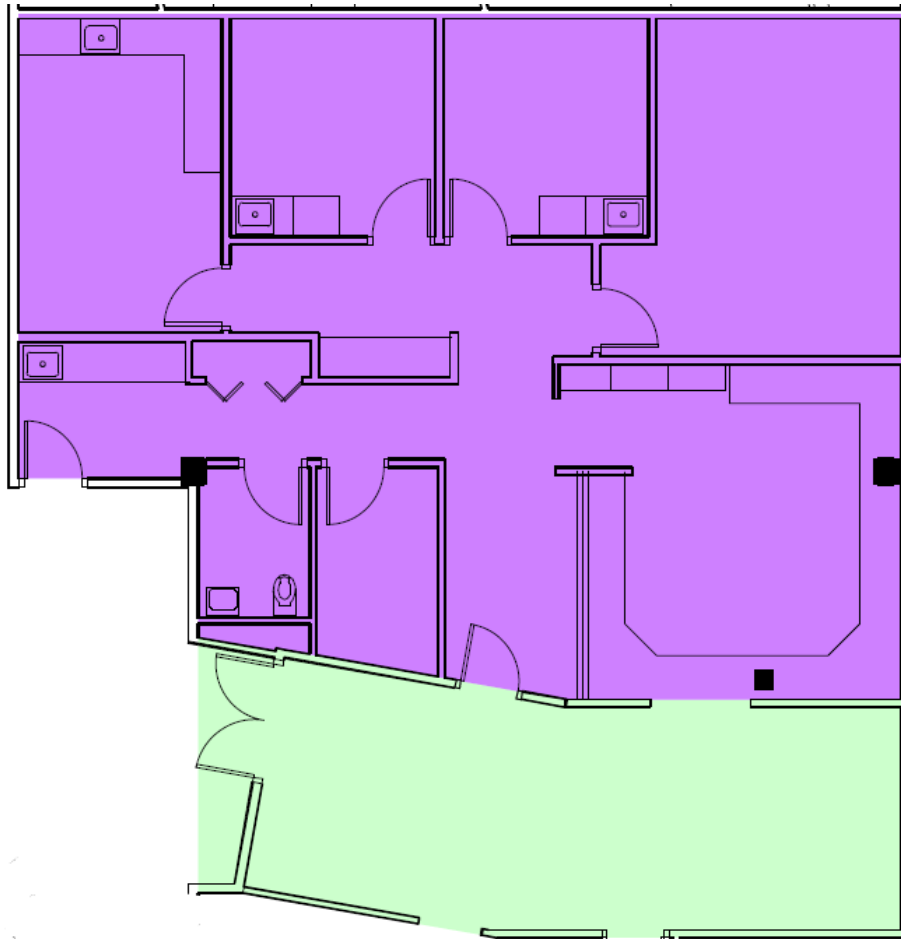
Scan for interior walk through



UMED ANCHORAGE MEDICAL OFFICE SPACE

\$1.60/RSF

Suite 300 – 1,993 RSF



3rd Floor Lake Otis Medical Plaza in

Midtown

NNN Lease

Shared Lobby Seating

Private Restroom

Mountain Views

Scan for interior walk through

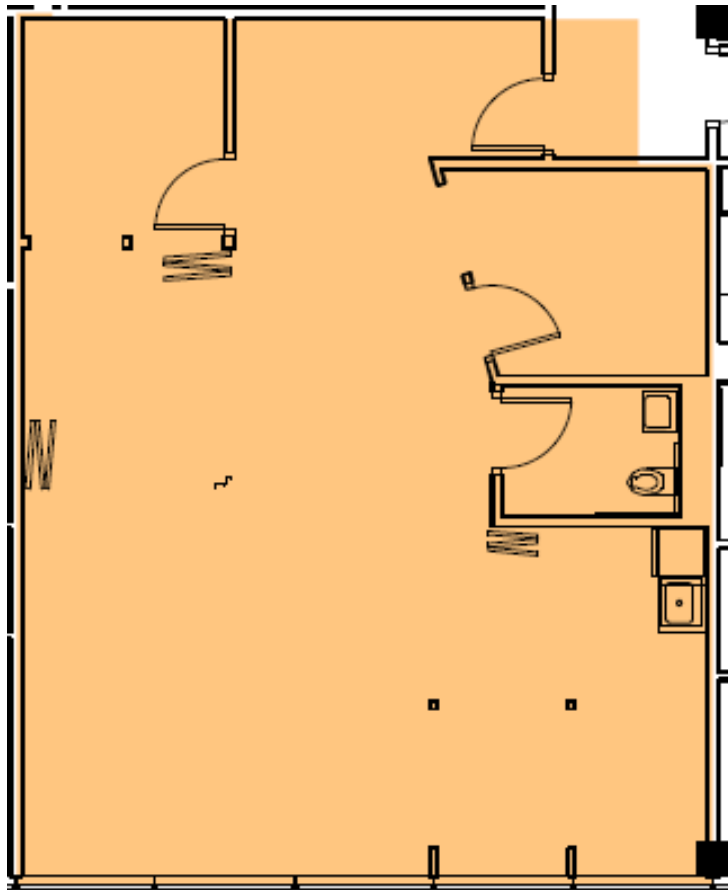


PTP MANAGEMENT

UMED ANCHORAGE MEDICAL OFFICE SPACE

\$1.60/RSF

Suite 304 – 1,282 RSF



3rd Floor Lake Otis Medical Plaza in Midtown

NNN Lease

Private Restroom

South Facing Suite

Large Open Floorplan

Scan for interior walk through

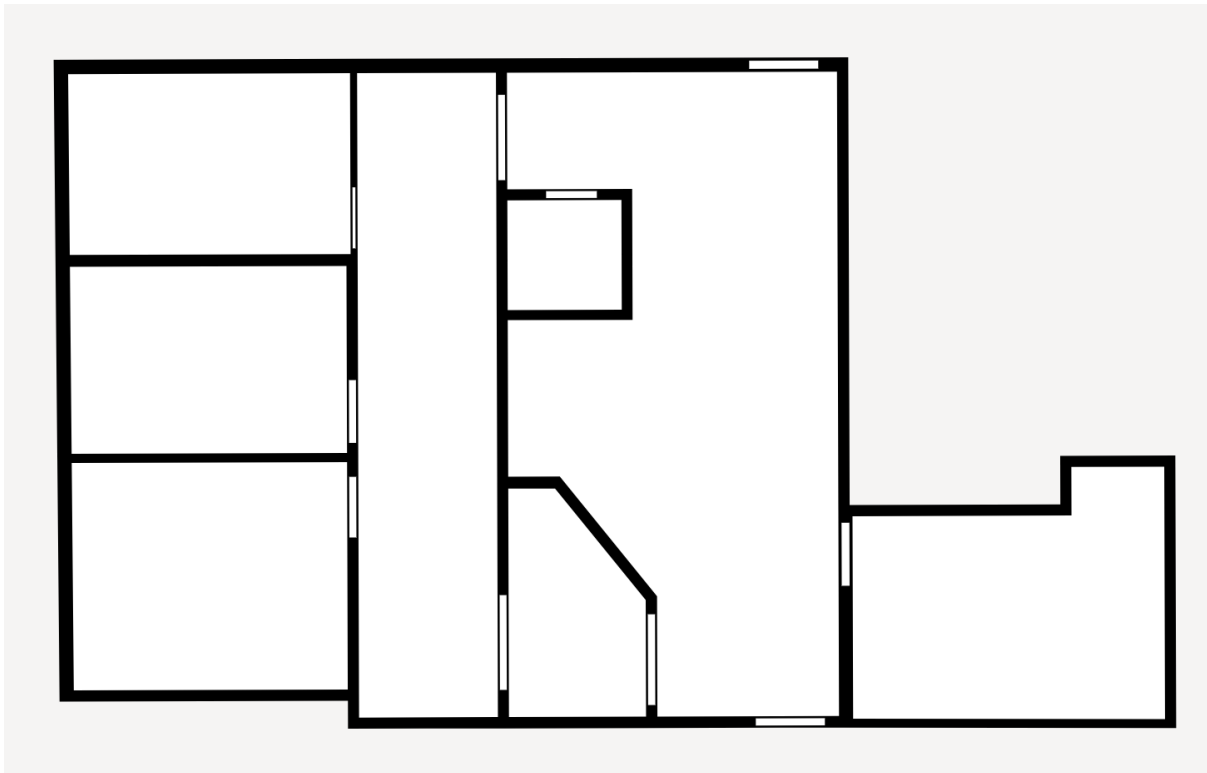


PTP MANAGEMENT

UMED ANCHORAGE MEDICAL OFFICE SPACE

\$1.60/RSF

Suite 307 – 1,307RSF



3rd Floor Lake Otis

Medical Plaza in Midtown

NNN Lease

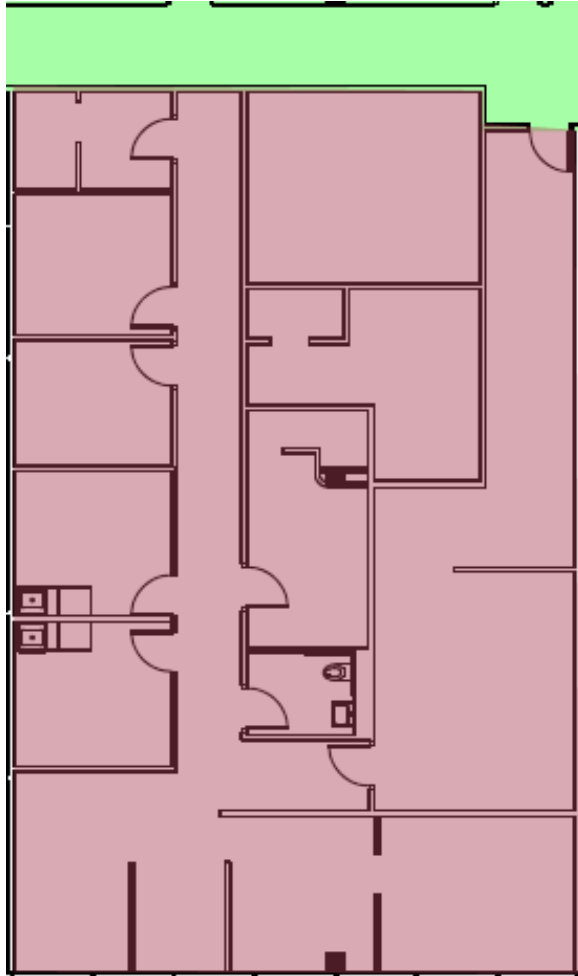
Scan for interior walk through



UMED ANCHORAGE MEDICAL OFFICE SPACE

\$1.60/RSF

Suite 308 – 3,212 RSF



3rd Floor Medical Plaza

NNN Lease

6 Exam Rooms

Private Restroom

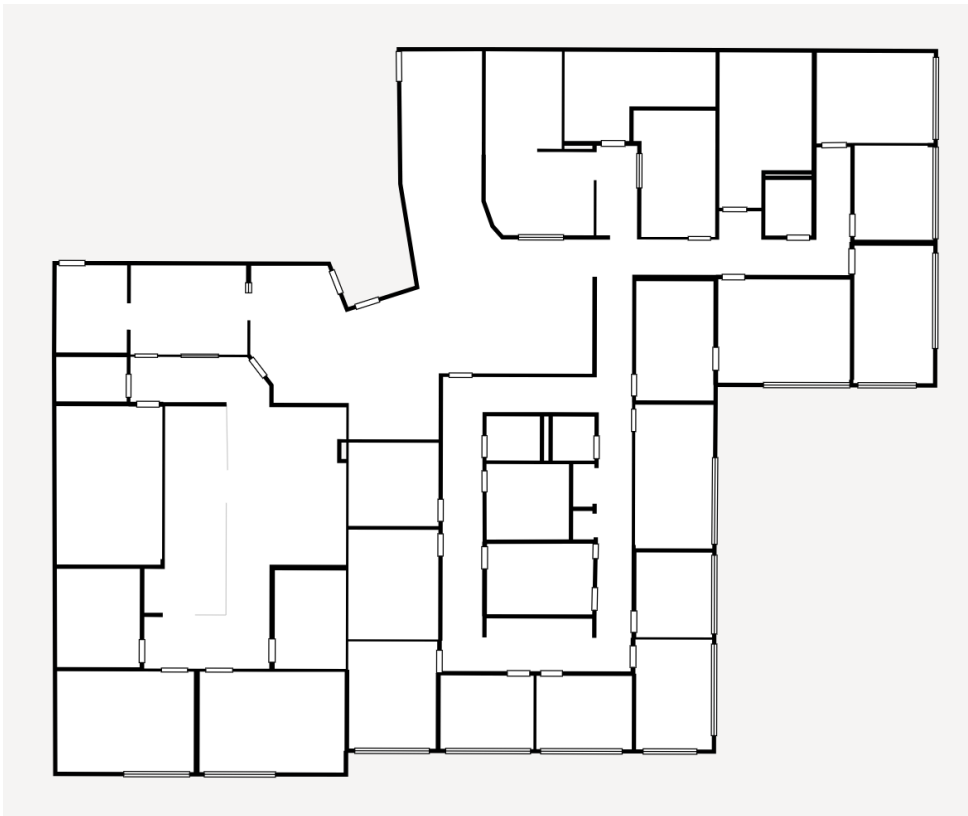
Scan for interior walk through



UMED ANCHORAGE MEDICAL OFFICE SPACE

\$1.60/RSF

Suite 312 – 8,126 RSF



3rd Floor Medical Plaza in Midtown

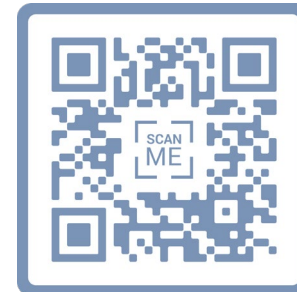
NNN Lease

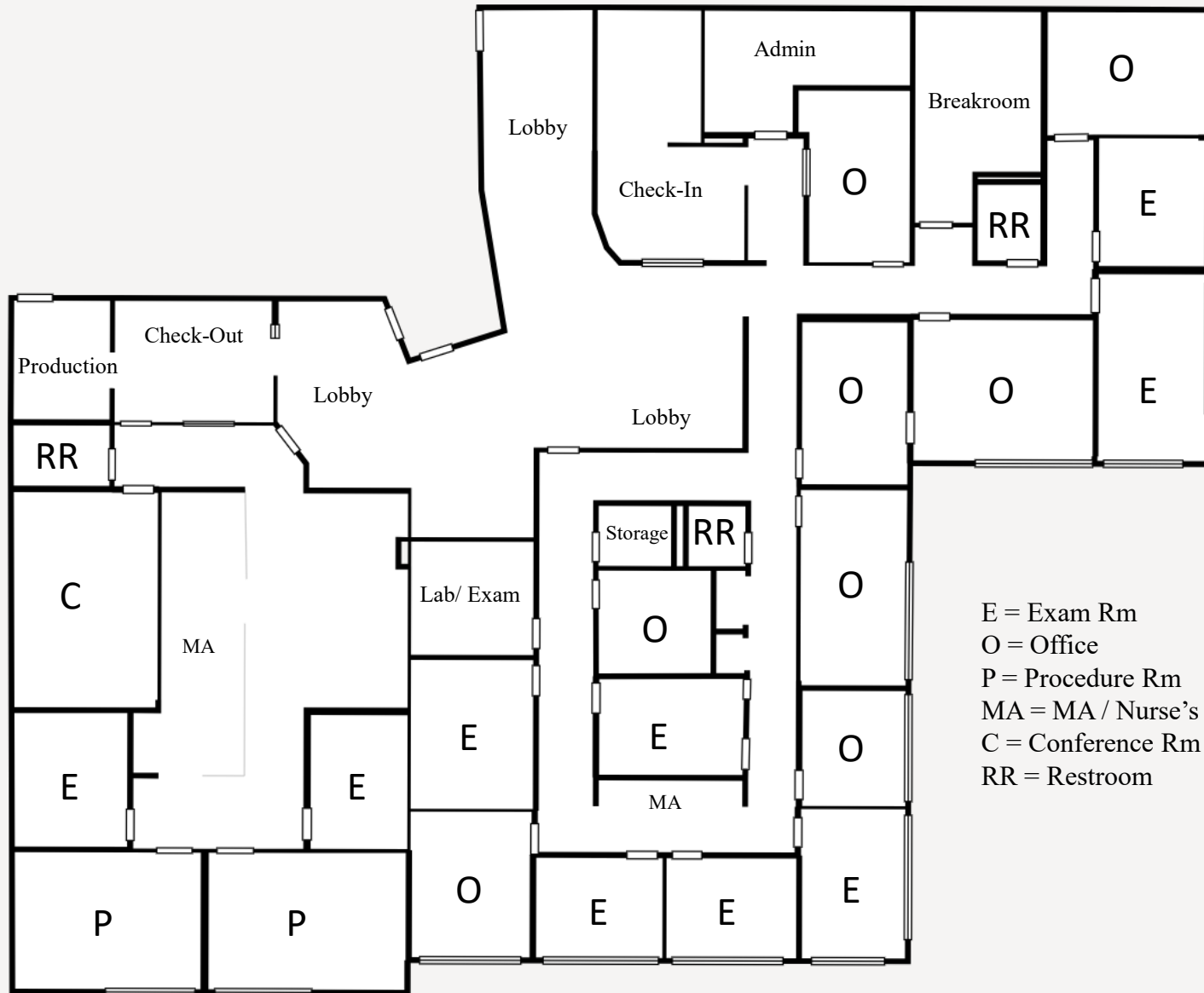
8 Exam Rooms

8 Offices

3 Private Restrooms

Scan for interior walk through





E = Exam Rm
 O = Office
 P = Procedure Rm
 MA = MA / Nurse's Station
 C = Conference Rm
 RR = Restroom

Matterport Property Report:

4100 Lake Otis Pkwy #312

Floor 1

Sizes and dimensions are approximate, actual may vary

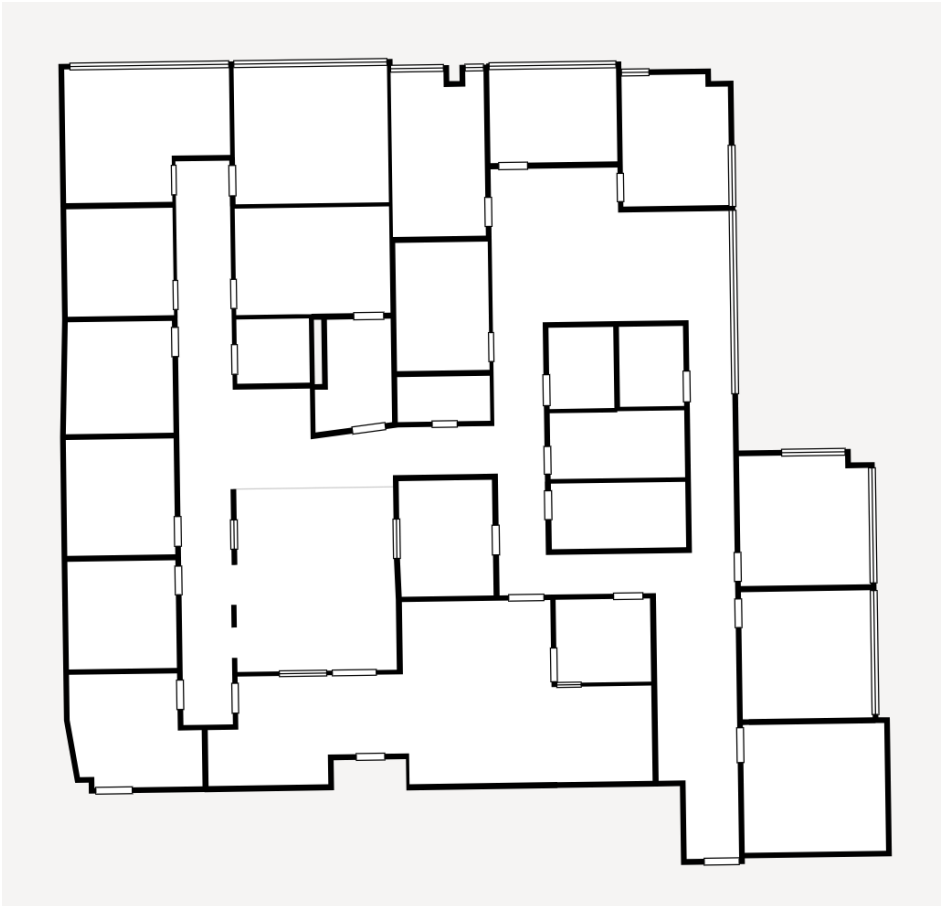
Visit 3D space on
 Matterport



UMED ANCHORAGE MEDICAL OFFICE SPACE

\$1.60/RSF

Suite 320 – 5,280 RSF



3rd Floor Medical Plaza in Midtown

NNN Lease

8 Exam Rooms

Kitchenette

Private Restroom

Scan for interior walk through



UMED ANCHORAGE MEDICAL OFFICE SPACE

\$1.60/RSF

Suite 330 – 1,940RSF



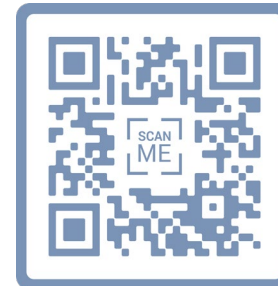
3rd Floor Lake Otis Medical Plaza in Midtown

NNN Lease

Private Restroom

Mountain Views

Scan for interior walk through



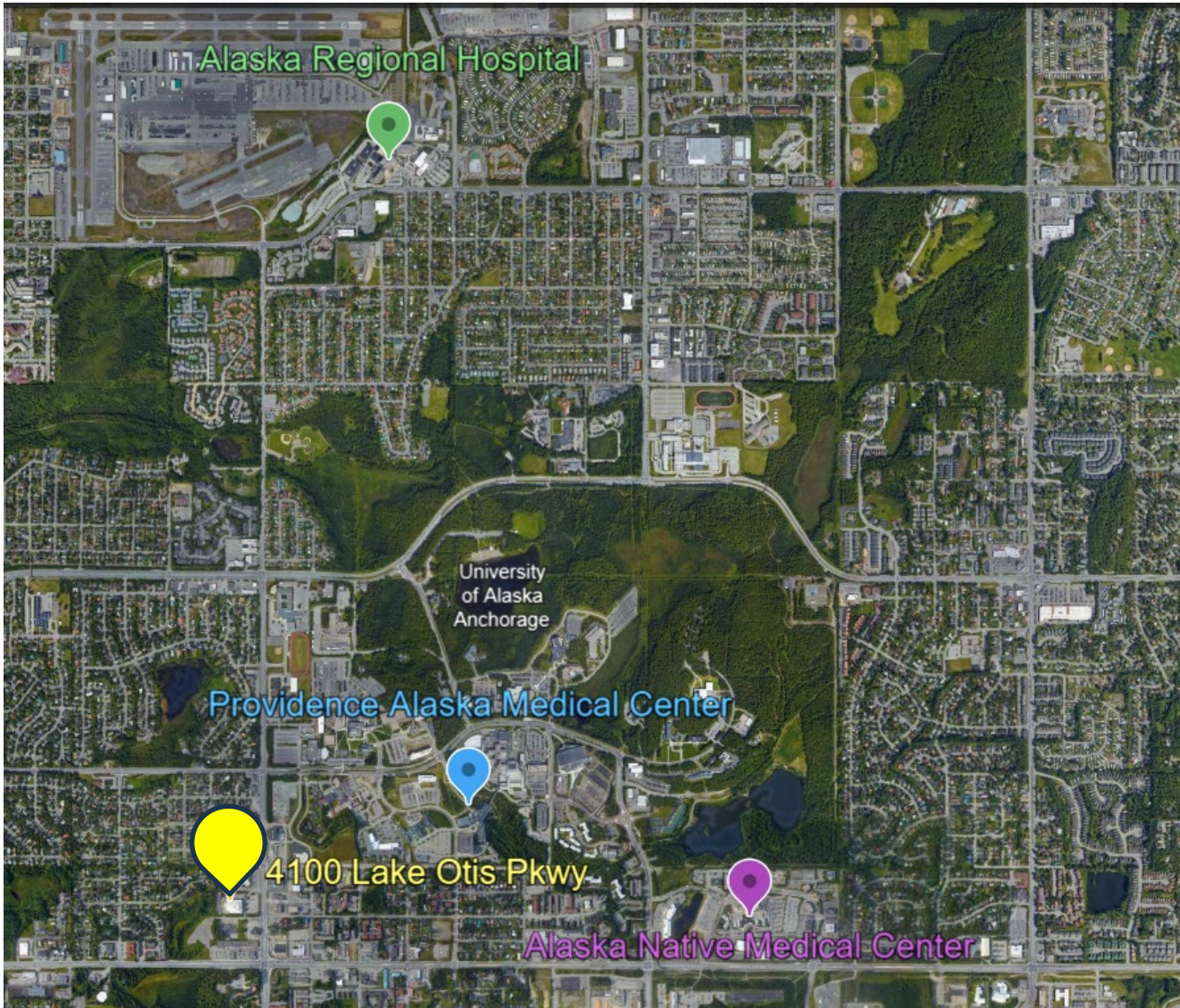
UMED ANCHORAGE CLASS A MEDICAL OFFICE

4100 Lake Otis Parkway



UMED ANCHORAGE CLASS A MEDICAL OFFICE

4100 Lake Otis Parkway



Alaska Regional Hospital

2.1 miles

Providence Medical Center

1.1 mile

Alaska Native Medical Center

1.8 miles



ERIK TAYLOR

Director of Real Estate

907.360.0579

etaylor@ptpmanagement.com

CORI BRYAN

Real Estate Specialist

907.759.9338

cbryan@ptpmanagement.com

Document has been prepared for marketing purposes and general information only. All information is deemed reliable but is not guaranteed. Interested parties are advised to independently verify all information contained herein. Lessee is responsible for conducting appropriate due-diligence and research. PTP Management, Inc. makes no guarantees, representations or warranties of any kind, expressed or implied regarding provided information including but not limited to warranties of information, accuracy and reliability.



PTP

MANAGEMENT



Real Estate Commission
550 West 7th Avenue, Suite 1500, Anchorage, AK 99501
Phone: (907) 269-8160

Email: RealEstateCommission@Alaska.Gov
Website: ProfessionalLicense.Alaska.Gov/RealEstateCommission

Alaska Real Estate Commission Consumer Disclosure

This is not a contract. This disclosure, as required by law, outlines the obligations of the licensee to the consumer and does not obligate the consumer to the licensee. This disclosure outlines the duties of the types of licensee relationships identified by Alaska State law. (AS 08.88.600 - 08.88.995). The consumer understands that they will be working with the licensee under the relationship initiated below:

Specific Assistance	Representation
<p>The consumer is receiving Specific Assistance without Representation. The licensee does not represent the consumer. Rather, the licensee is simply responding to requests for information, and the licensee may "represent" another party in the transaction while providing you with Specific Assistance. Unless you and the licensee agree otherwise, information you provide the licensee is not confidential. Duties owed to the consumer by the licensee include:</p> <ul style="list-style-type: none"> a. Exercise of reasonable skill and care; b. Honest and good faith dealing; c. Timely presentation of all written communications; d. Disclosing all material information known by the licensee regarding the physical condition of a property; and e. Timely accounting of all money and property received by the licensee. <p>Consumer Initials: _____ / _____ Date: _____</p>	<p>The licensee represents only the consumer(s) listed in this disclosure unless otherwise agreed to in writing by all consumers in a transaction. Duties owed to the consumer by the licensee include:</p> <ul style="list-style-type: none"> a. All duties owed by the licensee providing Specific Assistance; b. Not intentionally taking actions which are adverse or detrimental to the consumer; c. Timely disclosure of conflicts of interest to the consumer; d. Advising the consumer to seek independent expert advice if a matter is outside the expertise of the licensee; e. Not disclosing confidential information during or after representation without written consent of the consumer unless required by law; and f. Making a good faith and continuous effort. <p>Consumer Initials: _____ / _____ Date: _____</p>
Neutral Licensee	
<p>Alaska law allows for a licensee to assist the Seller/Lessor AND the Buyer/Lessee in a real estate transaction. It is understood that a Neutral Licensee is NOT representing either party and duties are limited. Duties owed to the consumer by a Neutral Licensee include:</p> <ul style="list-style-type: none"> a. All duties owed by the licensee providing Specific Assistance; b. Duties a, b, c, d, and e, owed by the licensee providing Representation; and c. Not disclosing the terms or the amount of money the consumer is willing to pay or accept for a property if different than what the consumer has offered or accepted for a property. <p>Consumer Initials: _____ / _____ Date: _____ (Must attach Waiver of Right to be Represented)</p>	
Duties Not Owed by Licensee	
<p>AS 08.88.630 - Duties not owed by licensee. Unless agreed otherwise, a real estate licensee does not owe a duty to a person with whom the licensee has established a licensee relationship to</p> <ul style="list-style-type: none"> (1) conduct an independent inspection of the real estate that is the subject of the licensee relationship; (2) conduct an independent investigation of a person's financial condition; or (3) independently verify the accuracy or completeness of a statement made by a party to a real estate transaction or by a person reasonably believed by the licensee to be reliable. 	

Acknowledgment: The below consumer has read the information provided in the Alaska Real Estate Disclosure and understands the different types of relationships available by an Alaska Real Estate Licensee. For full description of Licensee Relationships refer to AS 08.88.600 - 08.88.695.

Brokerage Name:	PTP Management, Inc		
Licensee Name:	Erik Taylor	Signature:	<i>Erik Taylor</i>
		Date:	01/08/2025
Consumer Name:		Signature:	
		Date:	
Consumer Name:		Signature:	
		Date:	

An addendum X IS IS NOT attached. If more than one licensee is involved, a Consumer Disclosure Addendum shall be attached naming all licensees and specifying the relationship.

- THIS CONSUMER DISCLOSURE IS NOT A CONTRACT -



Real Estate Commission
550 West 7th Avenue, Suite 1500, Anchorage, AK 99501
Phone: (907) 269-8160

Email: RealEstateCommission@Alaska.Gov
Website: ProfessionalLicense.Alaska.Gov/RealEstateCommission

Alaska Real Estate Commission Consumer Disclosure Addendum

This form shall be attached to the Alaska Real Estate Commission Consumer Disclosure if there is more than one licensee in a relationship with the consumer, in a single transaction.

Relationship(s) MUST be indicated for each licensee listed below.

Specific Assistance without Representation = S

Representation = R

Neutral Licensee Relationship = N*

*If Neutral, the Waiver of Right to be Represented form (#08-4212) must be attached for each licensee.

Name	Signature	Date	Relationship		
			S	R	N*
Cori Bryan	<i>Cori Bryan</i>	01/08/2025		X	

TEAMS: If the aforementioned license(s) are a part of a team, the team name shall be listed below. The consumer understands that the team below is NOT acting as a brokerage. "Team" means two or more licensees within the same brokerage who work together as one unit under a collective name and provide services or perform activities that require a professional license in real estate.

Brokerage Name:	PTP Management, Inc
Team Name:	

Acknowledgment: The below consumer has read the information provided in the Alaska Real Estate Disclosure and understands the different types of relationships available by an Alaskan Real Estate Licensee. The consumer further understands that the duties owed by a licensee are limited by the relationship indicated.

Consumer Name:		Signature:		Date:	
Consumer Name:		Signature:		Date:	

- THIS CONSUMER DISCLOSURE IS NOT A CONTRACT -