

SANDY COVE SHOPPING CENTER RETAIL END CAP LOCATION FOR LEASE

NEC OF HWY 4 AND BIXLER RD., DISCOVERY BAY, CA

LISTING DATA

AVAILABLE SF: 2,650± SF (pad location)

COMMENTS:

- Dominant neighborhood shopping center in Discovery Bay, California – captive shopping audience!
- Successful anchor tenants include Safeway and CVS Drugs
- Great access, exposure, and visibility to Highway 4
- Ideal for general retail, soft goods, fast food restaurants, sit down restaurants, and other retail uses
- Cotenants include: McDonalds, Chase Bank, Supercuts and Starbucks Coffee



DEMOGRAPHICS AND TRAFFIC COUNTS

DEMOGRAPHICS:	Population:	16,820
	Income:	\$170,949
TRAFFIC COUNTS:	Highway 4:	24,700± Cars ADT (2017)

ECONOMIC DATA

LEASE RATE: Call for lease rate

CONTACT

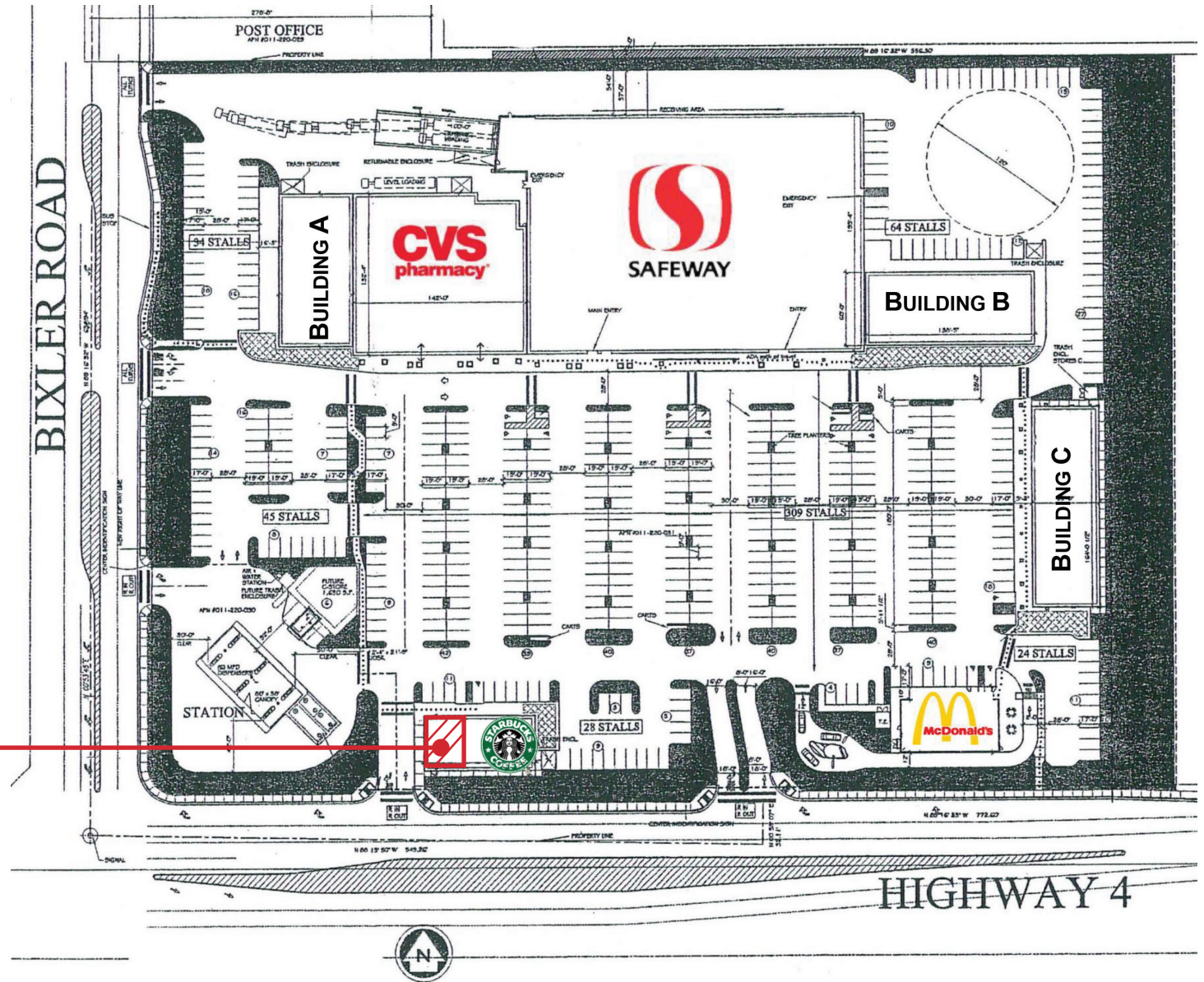
Christopher W. Sill
BRE # 01188616
csill@lee-associates.com
D 209.983.6837



All information furnished regarding property for sale, rental or financing is from sources deemed reliable, but no warranty or representation is made to the accuracy thereof and same is submitted to errors, omissions, change of price, rental or other conditions prior to sale, lease or financing or withdrawal without notice. No liability of any kind is to be imposed on the broker herein.

SANDY COVE SHOPPING CENTER RETAIL END CAP LOCATION FOR LEASE

NEC OF HWY 4 AND BIXLER RD., DISCOVERY BAY, CA



2,650± SF
Available

CONTACT

Christopher W. Sill
BRE # 01188616
csill@lee-associates.com
D 209.983.6837

All information furnished regarding property for sale, rental or financing is from sources deemed reliable, but no warranty or representation is made to the accuracy thereof and same is submitted to errors, omissions, change of price, rental or other conditions prior to sale, lease or financing or withdrawal without notice. No liability of any kind is to be imposed on the broker herein.

**SANDY COVE SHOPPING CENTER
RETAIL END CAP LOCATION FOR LEASE**
NEC OF HWY 4 AND BIXLER RD., DISCOVERY BAY, CA



**Sandy Cove
Shopping Center
Discovery Bay, CA**



CONTACT

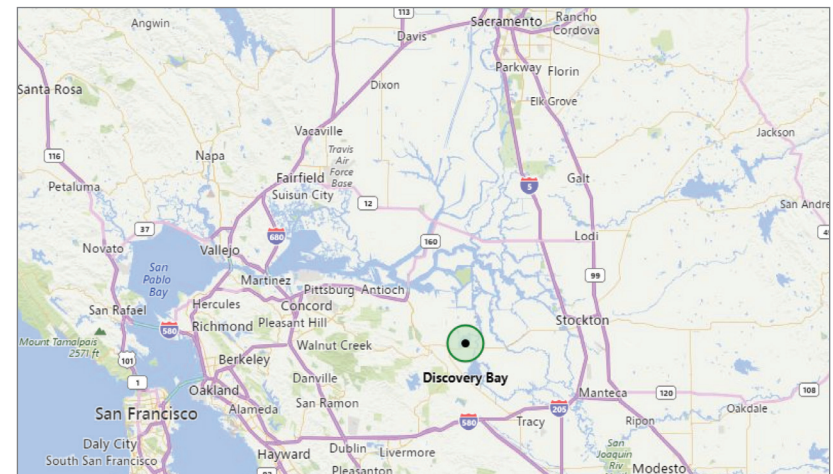
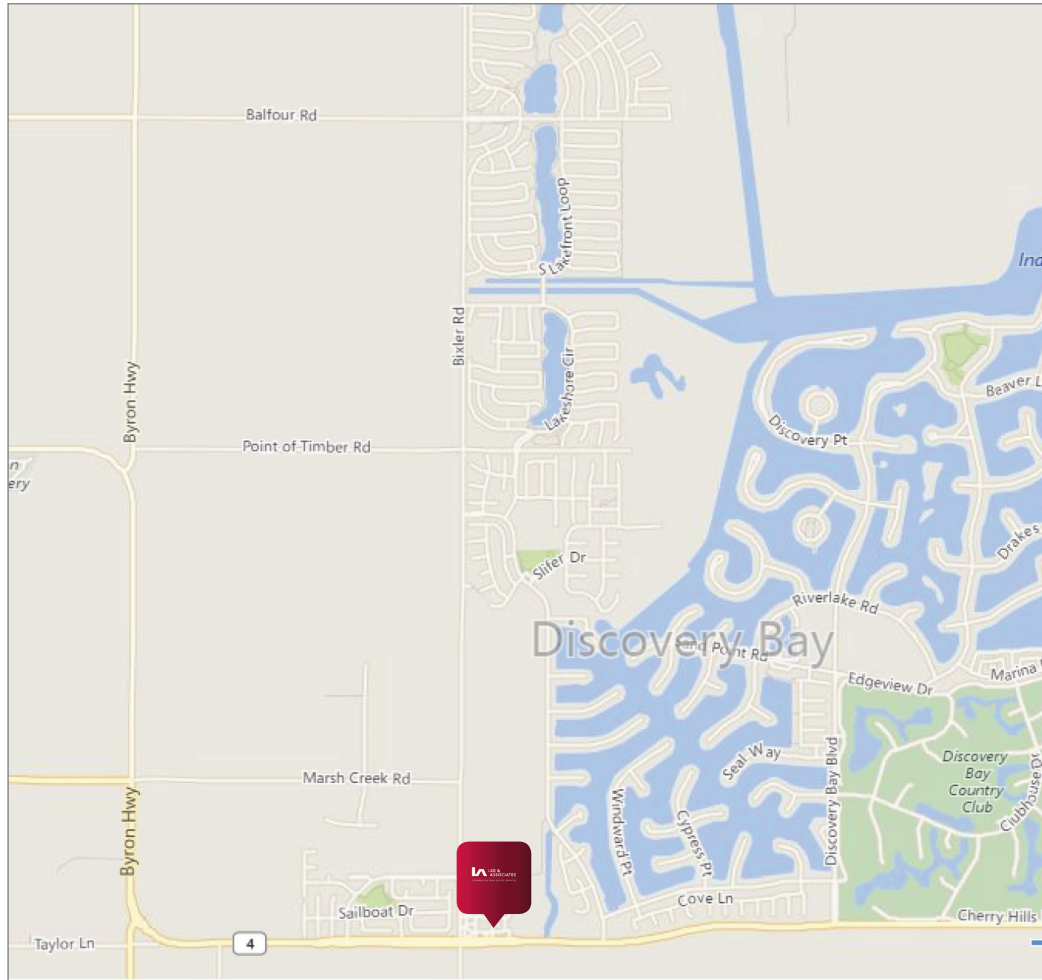
Christopher W. Sill
BRE # 01188616.
csill@lee-associates.com
D 209.983.6837



All information furnished regarding property for sale, rental or financing is from sources deemed reliable, but no warranty or representation is made to the accuracy thereof and same is submitted to errors, omissions, change of price, rental or other conditions prior to sale, lease or financing or withdrawal without notice. No liability of any kind is to be imposed on the broker herein.

SANDY COVE SHOPPING CENTER RETAIL END CAP LOCATION FOR LEASE

NEC OF HWY 4 AND BIXLER RD., DISCOVERY BAY, CA



CONTACT

Christopher W. Sill

BRE # 01188616

csill@lee-associates.com

D 209.983.6837

All information furnished regarding property for sale, rental or financing is from sources deemed reliable, but no warranty or representation is made to the accuracy thereof and same is submitted to errors, omissions, change of price, rental or other conditions prior to sale, lease or financing or withdrawal without notice. No liability of any kind is to be imposed on the broker herein.