

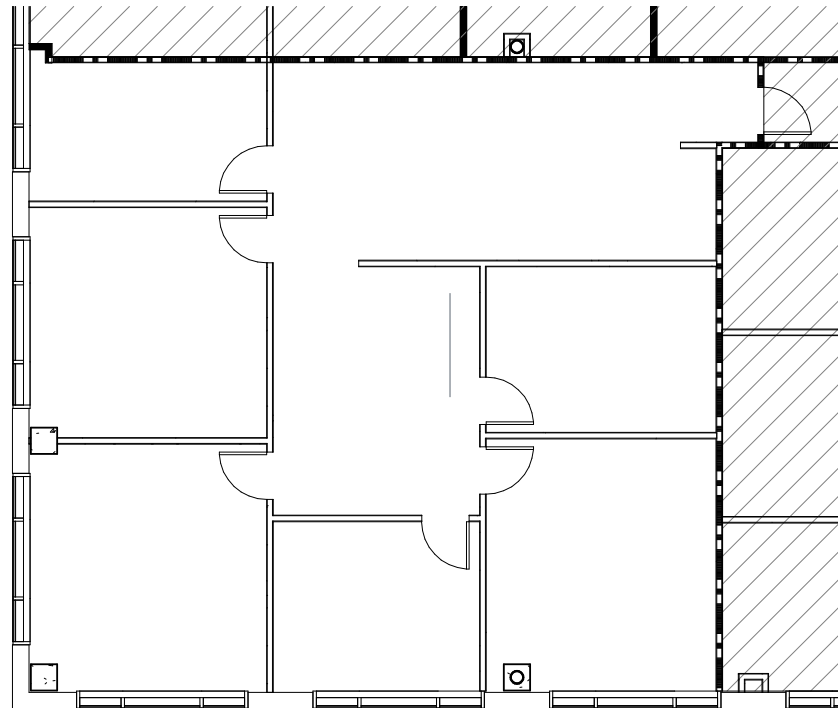
MILTON
PARK



200 MILTON PARK

11175 CICERO DRIVE, ALPHARETTA, GEORGIA, 30022

SUITE 475 | 2,144 SF AVAILABLE



**AVISON
YOUNG**

Kirk Rich, CCIM, SIOR, Principal
770.916.6112
kirk.rich@avisonyoung.com

Chris Godfrey, Principal
404.865.3678
chris.godfrey@avisonyoung.com

Monica Speak, Vice President
404.454.1904
monica.speak@avisonyoung.com