

# Private Commissary Space with Dedicated Cold Storage



For Lease  
6,072-19,401 RSF

5801 W. Dickens Avenue  
Chicago, Illinois

One Oakbrook Terrace  
Suite 400  
Oakbrook Terrace, Illinois 60181  
+1 630 932 1234

[hiffman.com](http://hiffman.com)

**Sale Terms:** Contact Listing Broker for Details

## PROPERTY HIGHLIGHTS

- Available Size: 6,072 SF - 19,401 RSF
- Building Size: 117,000 SF
- USDA and SQF-ready
- Ideal space for Commercial Kitchens, Commissaries, CPG Production, R&D Test Kitchen, Meal Delivery, Bakeries & more
- Shared Amenities
- Additional on-site freezer, refrigerated and dry storage
- On-site staff
- Open to short and long-term requirements



6,072 RSF UNIT 1  
13,329 RSF UNIT 2



COOLERS  
FREEZERS



100 OFF STREET  
PARKING SPACES



14' CLEAR  
HEIGHT

## Contact

John Basile  
+1 630 693 0641  
[jbasile@hiffman.com](mailto:jbasile@hiffman.com)

Pat Clifford  
+1 630 317 0753  
[pclifford@hiffman.com](mailto:pclifford@hiffman.com)

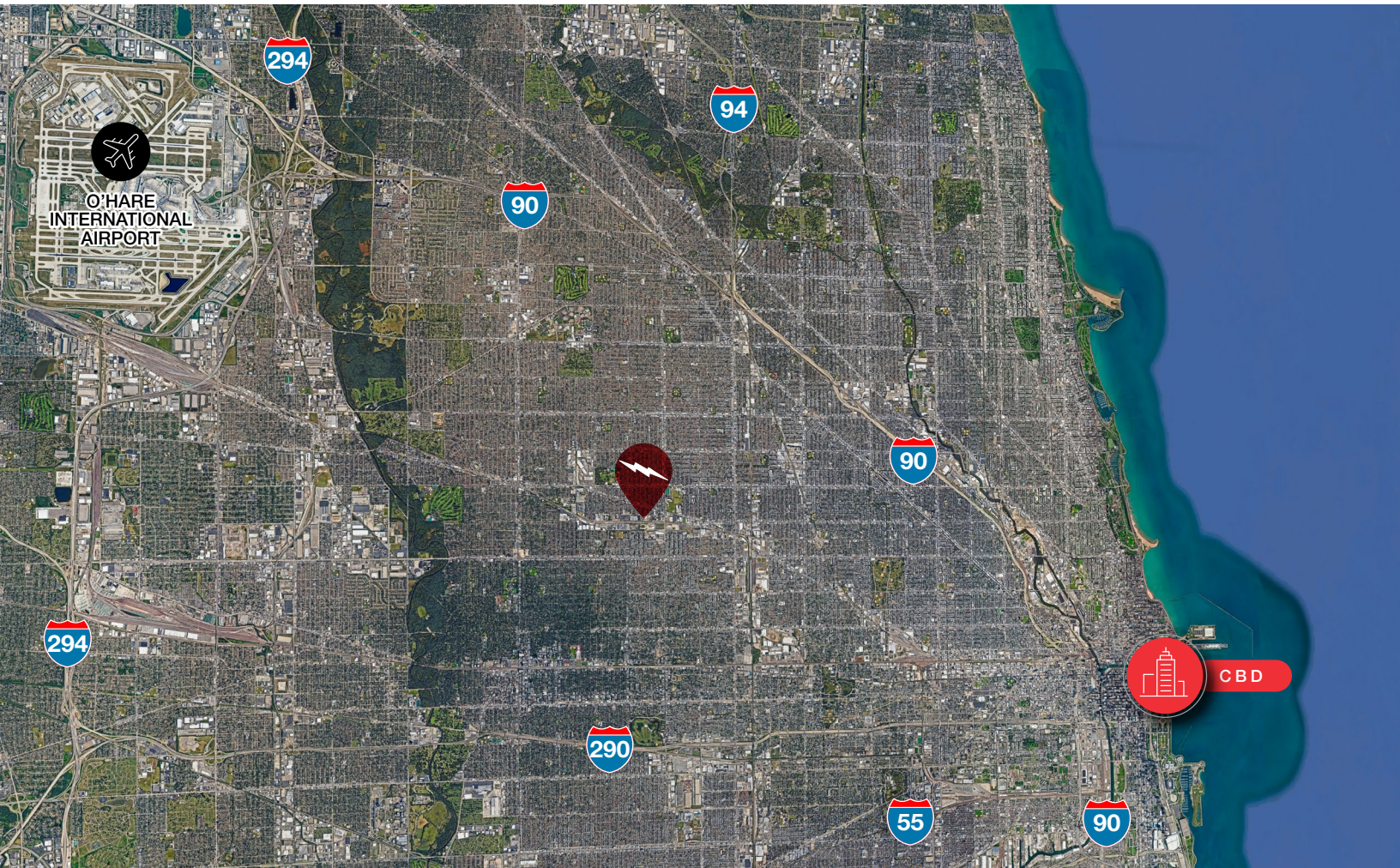


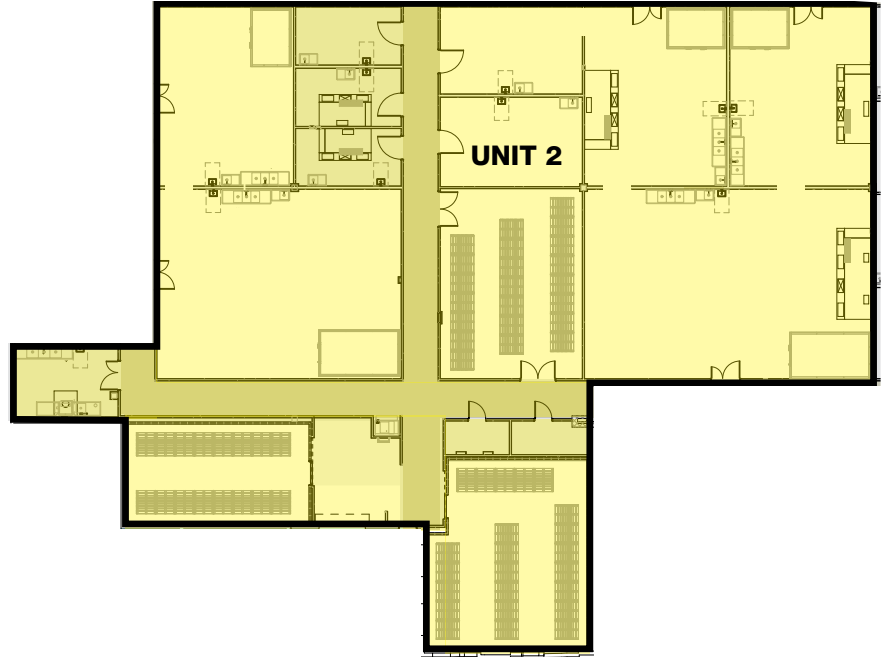
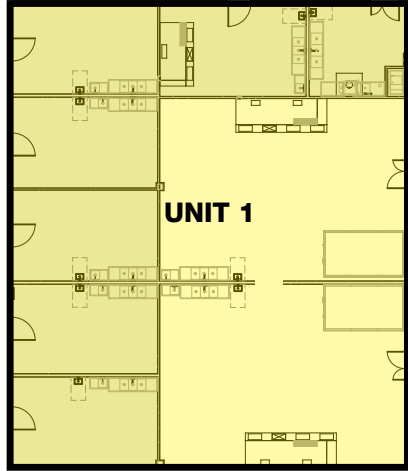
5 EXTERIOR  
DOCKS



4 ACRE  
SITE SIZE

NO WARRANTY OR REPRESENTATION, EXPRESS OR IMPLIED, IS MADE AS TO THE ACCURACY OF THE INFORMATION CONTAINED HEREIN, AND THE SAME IS SUBMITTED SUBJECT TO ERRORS, OMISSIONS, CHANGE OF PRICE, RENTAL OR OTHER CONDITIONS, PRIOR SALE, LEASE OR FINANCING, OR WITHDRAWAL WITHOUT NOTICE, AND OF ANY SPECIAL LISTING CONDITIONS IMPOSED BY OUR PRINCIPALS NO WARRANTIES OR REPRESENTATIONS ARE MADE AS TO THE CONDITION OF THE PROPERTY OR ANY HAZARDS CONTAINED THEREIN ARE ANY TO BE IMPLIED.





### UNIT 1 - 6,072 SF

- Private warewash station (high-temp unit)
- Dedicated Dock
- 2 walk-in coolers (100 SF each)
- Hood Lengths: 38-ft Type I
- Additional on-site cold, frozen and dry storage available
- 100% fresh makeup air (allergen control)
- Shared support spaces: restrooms, locker rooms, offices
- Configurations and pass throughs can be adjusted to suit.

### UNIT 2 - 13,329 SF

- Private 221 SF (not including the hallway) warewash station (high-temp-unit)
- (1) Private Dock + (1) dedicated dock
- Private storage: frozen 853 SF | cold 543 SF | dry 806 SF
- 5 walk-in coolers (~500 SF)
- Additional on-site cold, frozen and dry storage available
- 100% fresh makeup air (allergen control)
- Hood Lengths: 50-ft Type I + (2) Type II
- Shared support spaces: restrooms, locker rooms, offices
- Configurations and pass throughs can be adjusted to suit.

## Contact

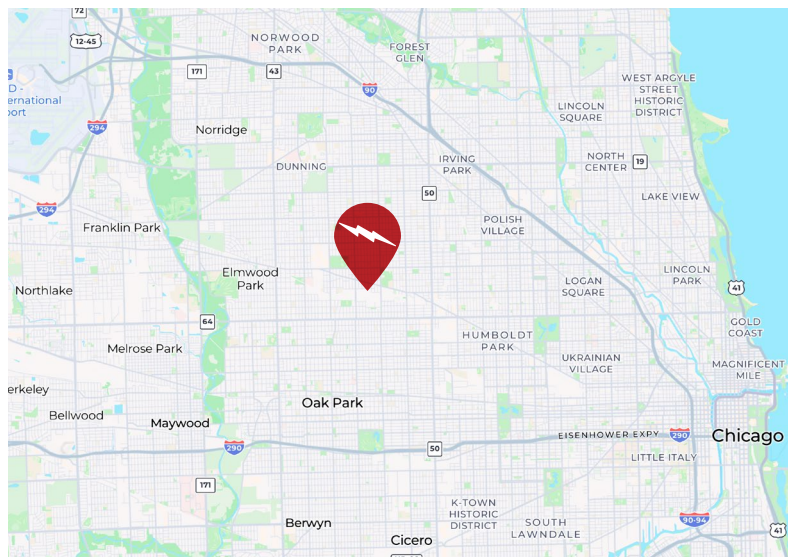
John Basile  
+1 630 693 0641  
jbasile@hiffman.com

Pat Clifford  
+1 630 317 0753  
pclifford@hiffman.com



One Oakbrook Terrace  
Suite 400  
Oakbrook Terrace, IL 60181  
+1 630 932 1234

[hiffman.com](http://hiffman.com)



## CONVENIENCE IS KEY

Parking, public transportation, freeways/expressways and trucking lines are all close by.

Minutes from Logan Square, West Loop, Oak Park and O'Hare/Rosemont.

## Contact

John Basile  
+1 630 693 0641  
jbasile@hiffman.com

Pat Clifford  
+1 630 317 0753  
pclifford@hiffman.com



One Oakbrook Terrace  
Suite 400  
Oakbrook Terrace, IL 60181  
+1 630 932 1234

[hiffman.com](http://hiffman.com)