

FOR LEASE | 2,800 SF OFFICE SPACE (DIVISIBLE)
11775 W. 112TH STREET, OVERLAND PARK, KS

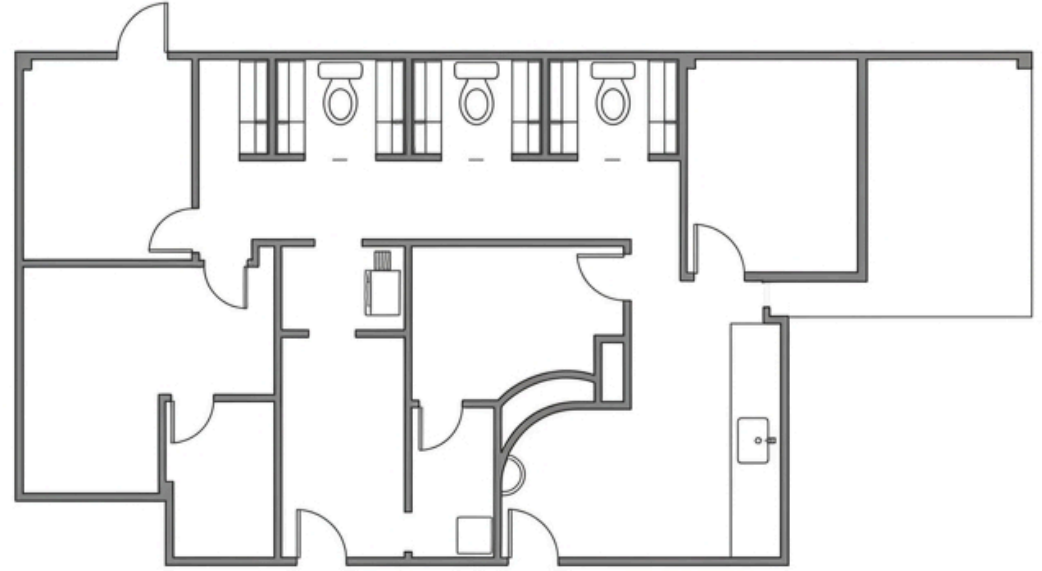


FOR LEASE | 2,800 SF OFFICE SPACE

11775 W. 112TH STREET OVERLAND PARK, KANSAS

PROPERTY HIGHLIGHTS

- College Boulevard and Quivira
- One block from Ride KC Bus Stop
- Great location near highways
- Nicely appointed office space
- Expansive Windows throughout
- Excellent natural light
- Private offices and open area
- Conference room and break room
- Potential exterior signage



PRICE: \$21.00/FT. FULL SERVICE



ANN JORDEN-SPENCER, CCIM

CELL: 913.205.5909

OFFICE: 913.384.6666

ANN@JACKJORDENREALESTATE.COM

Jack Jordan Real Estate, LLC

