

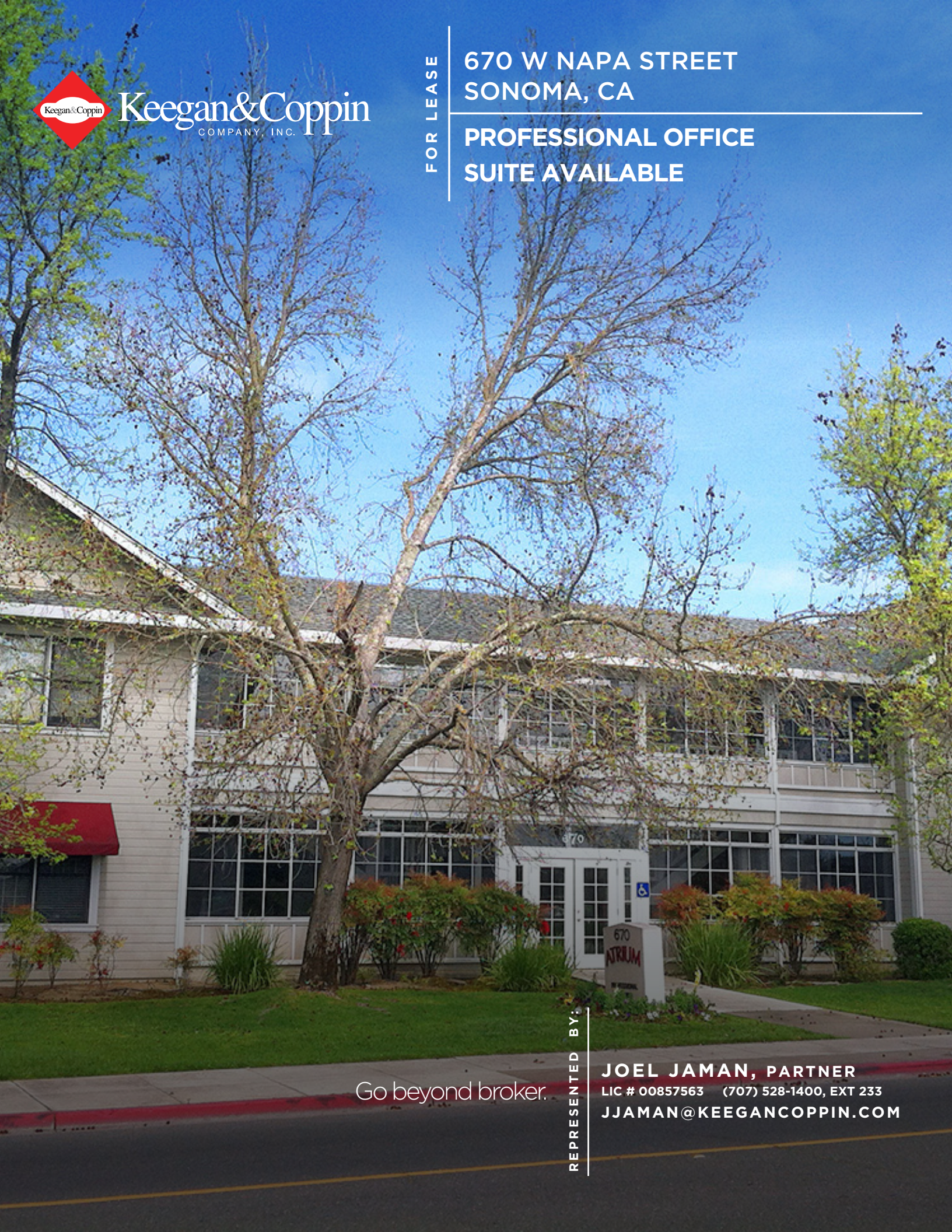


Keegan & Coppin
COMPANY, INC.

FOR LEASE

670 W NAPA STREET
SONOMA, CA

PROFESSIONAL OFFICE
SUITE AVAILABLE



Go beyond broker.

REPRESENTED BY:

JOEL JAMAN, PARTNER
LIC # 00857563 (707) 528-1400, EXT 233
JJAMAN@KEEGANCOPPIN.COM



670 W NAPA STREET
SONOMA, CA

**PROFESSIONAL
OFFICE SPACE
FOR LEASE**

PROPERTY DETAILS

PROPERTY HIGHLIGHTS

Two Suites Available:

Suite H: 850+/- sf of Space (Second Floor Walk-up)

- Includes: Four Private Offices, Reception, File/Store Area
- Extensive Glass-line with Operable Windows
- Excellent Location with Easy Access to Downtown Business District
- Ideal for: Attorney, Accountant, & Other Small Professional Office Users

PROPERTY INFORMATION

Lease Rate

\$1,912.50/Month Modified Gross (\$2.25 PSF)

Tenant pays utilities and interior janitorial.

Lease Term

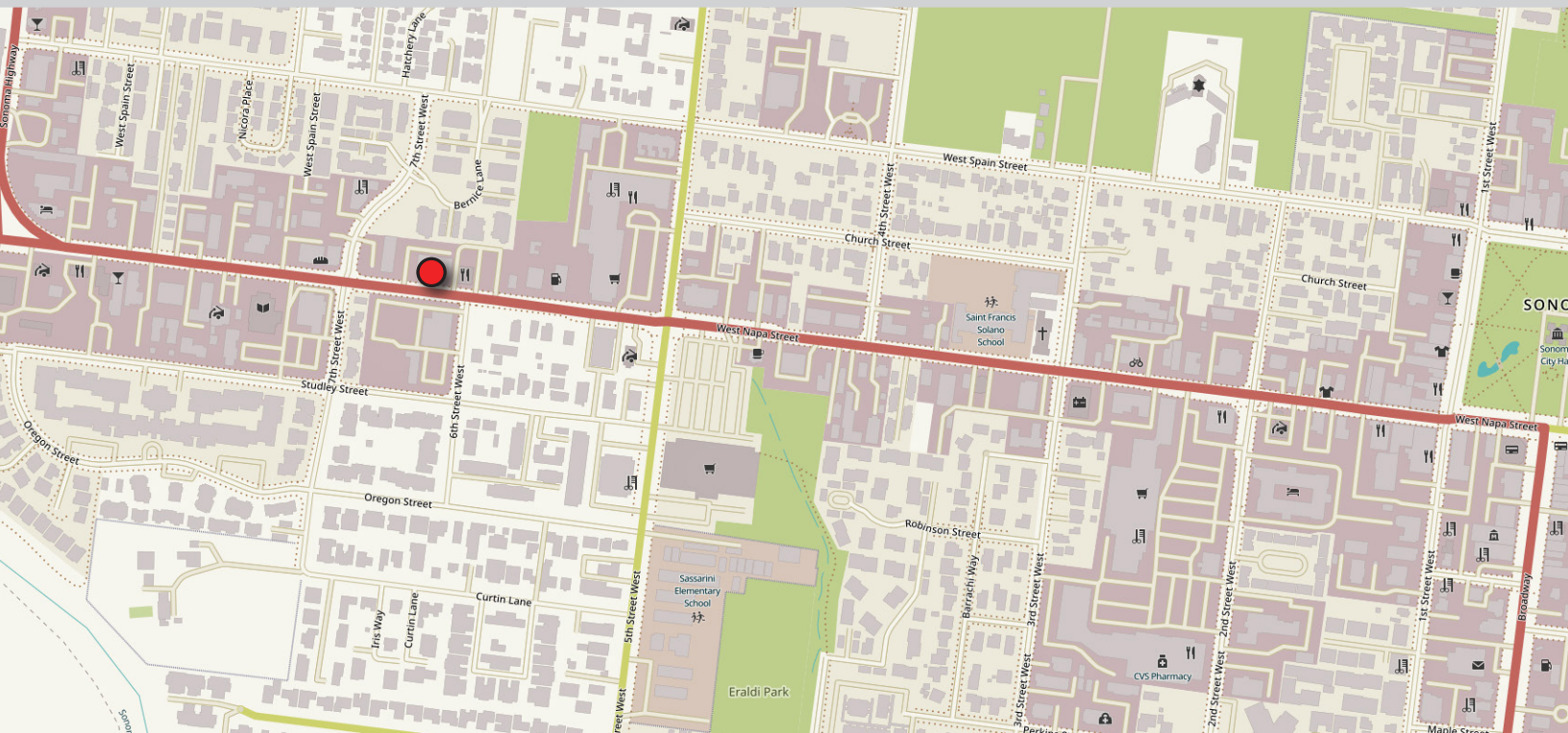
Negotiable

Parking

40 On-Site Parking Spaces

Building Type

Office



REPRESENTED BY: JOEL JAMAN, PARTNER
 KEEGAN & COPPIN CO., INC.
 LIC # 00857563 (707) 528-1400, EXT 233
 JJAMAN@KEEGANCOPPIN.COM

The above information, while not guaranteed, has been secured from sources we believe to be reliable. Submitted subject to error, change or withdrawal. An interested party should verify the status of the property and the information herein.



Keegan & Coppin
COMPANY, INC.

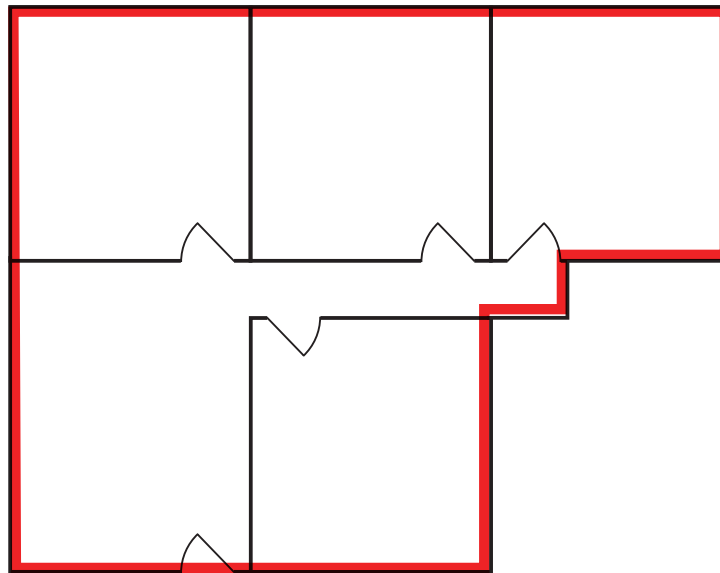


670 W NAPA STREET
SONOMA, CA

**PROFESSIONAL
OFFICE SPACE
FOR LEASE**

FLOOR PLAN

SUITE H
850+/- SF



NOT TO SCALE

REPRESENTED BY: JOEL JAMAN, PARTNER
KEEGAN & COPPIN CO., INC.
LIC # 00857563 (707) 528-1400, EXT 233
JJAMAN@KEEGANCOPPIN.COM

The above information, while not guaranteed, has been secured from sources we believe to be reliable. Submitted subject to error, change or withdrawal. An interested party should verify the status of the property and the information herein.



670 W NAPA STREET
SONOMA, CA

PROFESSIONAL
OFFICE SPACE
FOR LEASE

VICINITY AERIAL



Keegan & Coppin Co., Inc.
1355 N Dutton Ave., Suite 100
Santa Rosa, CA 95401
keegancoppin.com
P: (707) 528-1400

REPRESENTED BY:

JOEL JAMAN, PARTNER
LIC # 00857563 (707) 528-1400, EXT 233
JJAMAN@KEEGANCOPPIN.COM