



## 3033 Whipple Ave NW Canton, Ohio 44718

SQ FT OFFICE	120/SF -150/SF
LEASE RATE	\$1,000-\$1,200/month
LEASE TYPE	Gross
YEAR BUILT	1998
ZONING	B3

### Property Details

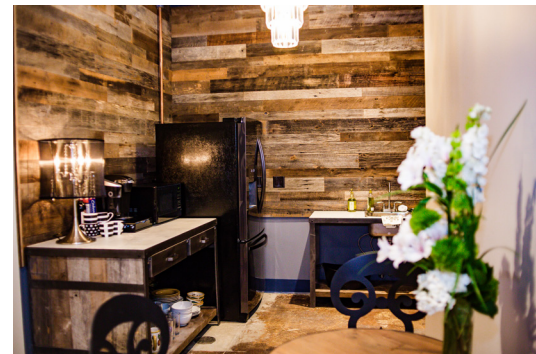
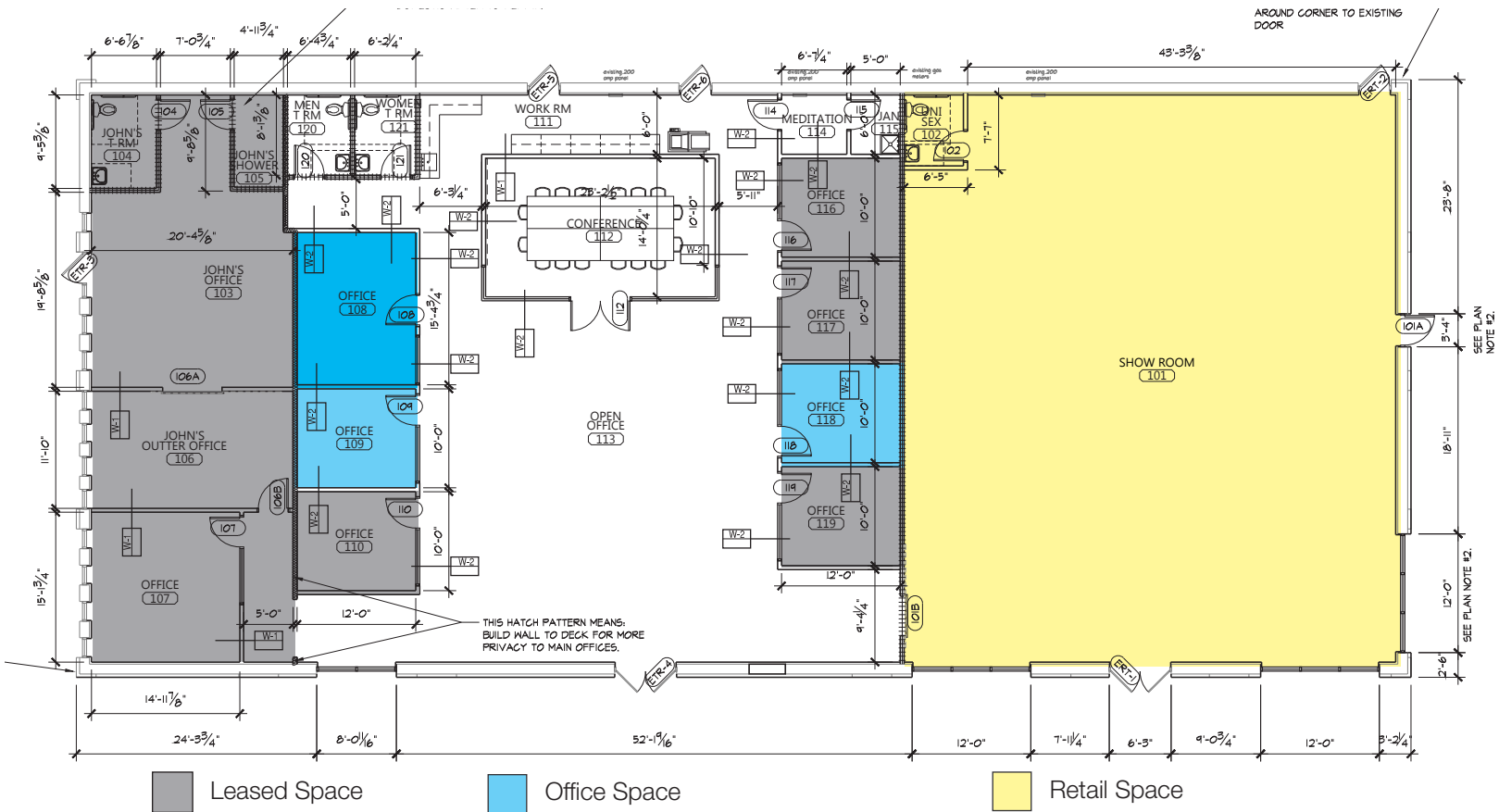
- New build out features single private office designed to be leased out individually or as a group.
- A beautiful furnished waiting area, conference room and kitchen is included when leasing an office.
- Common areas and offices have been professionally decorated with high end furniture and decor.
- This property is a must see! You will never want to work from home again.

### Kelly Sober, CCIM

P 330 497 9837  
kelly@naispring.com

### Dan Spring, SIOR

P 330 497 6249  
dan@naispring.com



NO WARRANTY OR REPRESENTATION, EXPRESS OR IMPLIED, IS MADE AS TO THE ACCURACY OF THE INFORMATION CONTAINED HEREIN, AND THE SAME IS SUBMITTED SUBJECT TO ERRORS, OMISSIONS, CHANGE OF PRICE, RENTAL OR OTHER SALE CONDITIONS, PRIOR SALE, LEASE OR FINANCING, OR WITHDRAWAL WITHOUT NOTICE, AND OF ANY SPECIAL LISTING CONDITIONS IMPOSED BY OUR PRINCIPALS NO WARRANTIES OR REPRESENTATIONS ARE MADE AS TO THE CONDITION OF THE PROPERTY OR ANY HAZARDS CONTAINED THEREIN ARE ANY TO BE IMPLIED.

8234 Pittsburg Ave NW  
North Canton, OH 44720  
+1 330 966 8800  
naispring.com