

(A)

OCCUPIED SUITE 2600  
1,050 RSF

(B)

OCCUPIED SUITE 2705  
150 USF

(C)

VACANT SUITE 2700  
150 USF

(D)

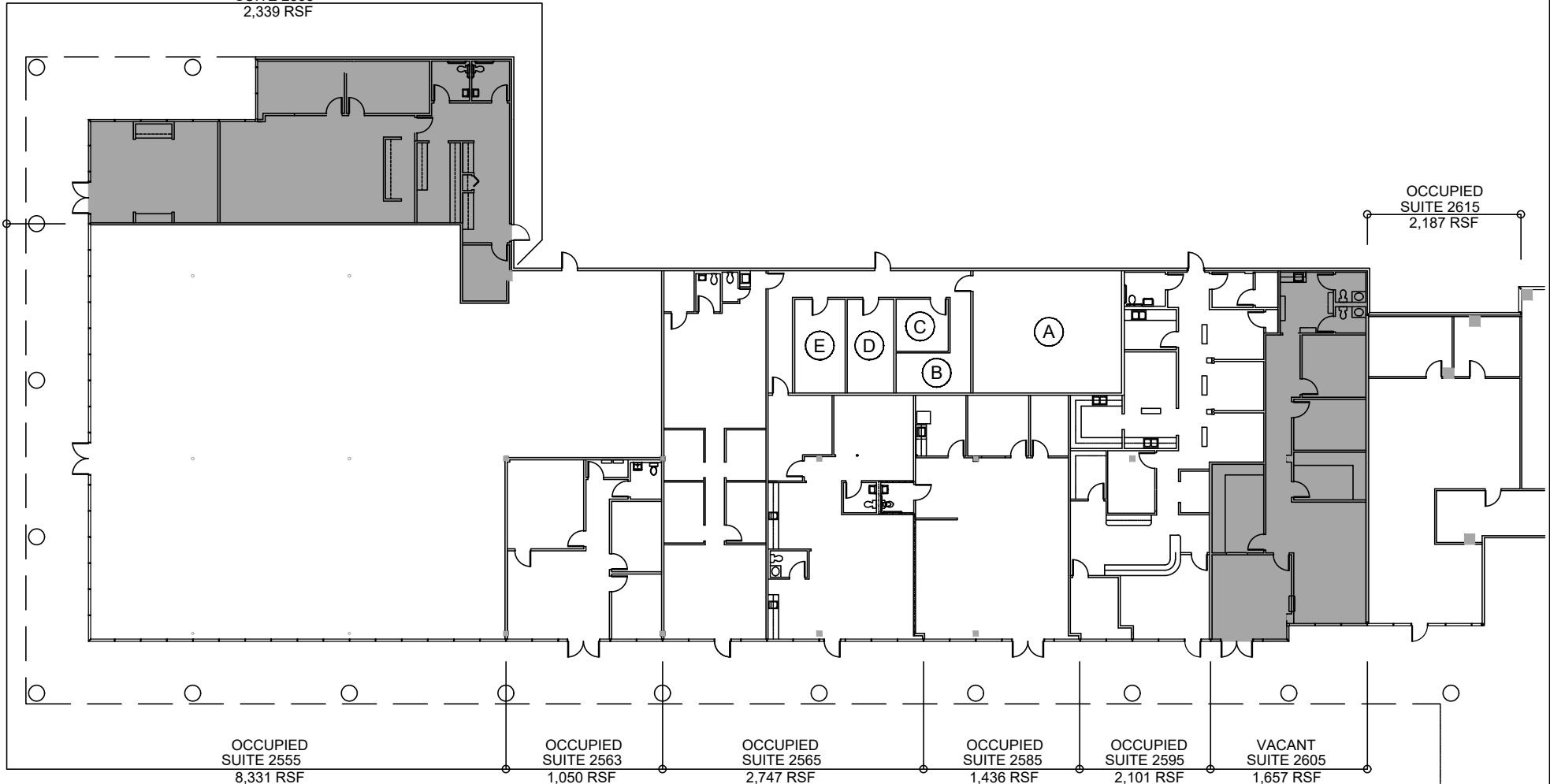
VACANT SUITE 2601  
162 RSF

(E)

VACANT SUITE 2602  
180 RSF

VACANT SUITE 2535  
2,339 RSF

OCCUPIED SUITE 2615  
2,187 RSF



Floor plans are for conceptual purposes only; they are not to scale and may not reflect existing conditions. As-builts must be verified. Not for regulatory approval, permitting, or construction.



**2625 BAY AREA BLVD.**  
**TWO CORPORATE PLAZA**  
**LEVEL 01 RETAIL CENTER**

CB224403.01-YH APRIL 11, 2024



**LEASING CONTACT**

DAVID LEE  
 (713)270-3335  
 DAVID.LEE@TRANSWESTERN.COM

DOUG LITTLE  
 (713)272-1284  
 DOUG.LITTLE@TRANSWESTERN.COM

JACK SCHARNBERG  
 (713)407-8717  
 JACK.SCHARNBERG@TRANSWESTERN.COM



**PROPERTY MANAGEMENT**  
 (281)480-6876



**CONTACT**  
 5065 Westheimer Rd., Ste #1100, Houston, TX 77056  
 Phone: (713) 783-5900 | Fax: (713) 783-6066  
 www.cdi-douglas-pye.com