

**PORTA  
& CO.**

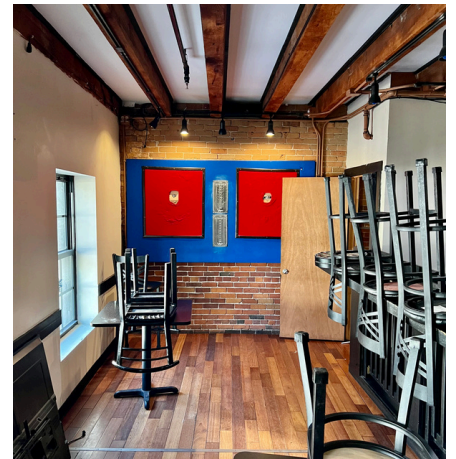
**FOR LEASE: Old Port Retail**

420 Fore Street | Portland, ME



## Property Highlights

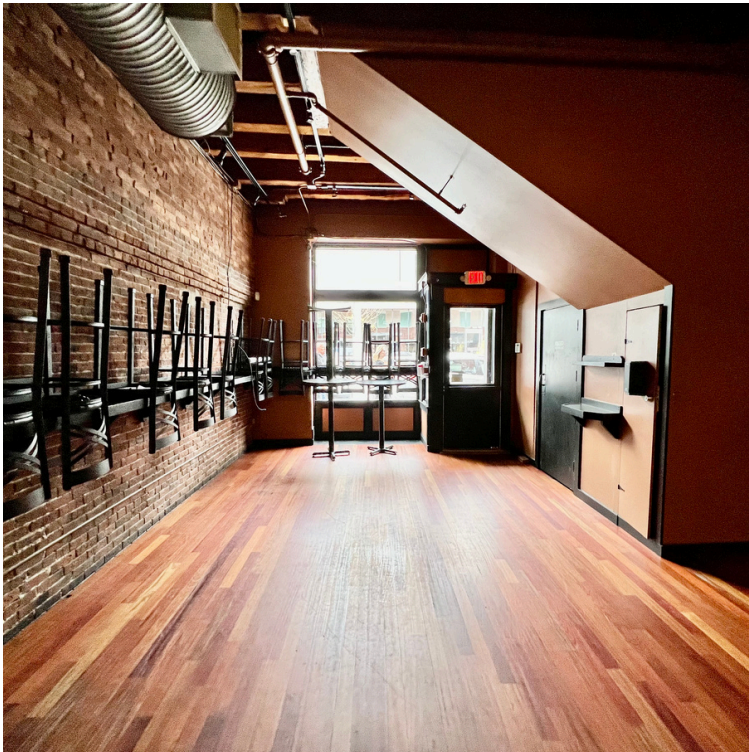
- 2,200 ± SF of retail/bar space on Fore Street with excellent visibility.
- Located in the heart of the Old Port with restaurants, hotels, local and national retailers
- Lease Rate: \$50.00/SF MG



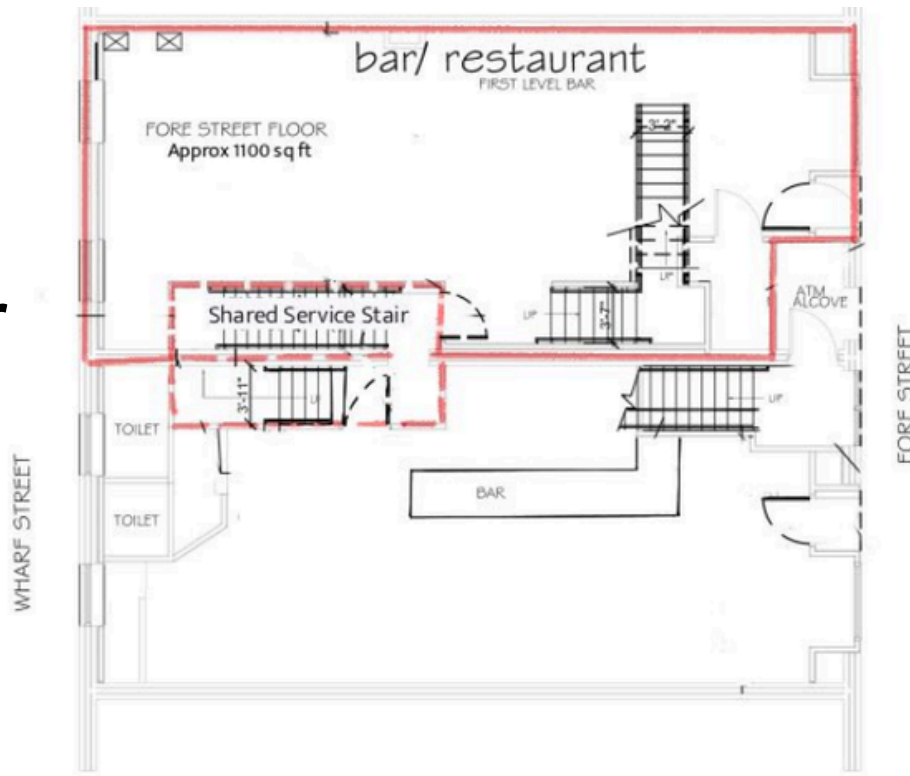
**PORTA & CO.** | 30 Milk Street, Second Floor | Portland, ME 04101 | (207)-747-1515

[www.portacompany.com](http://www.portacompany.com)

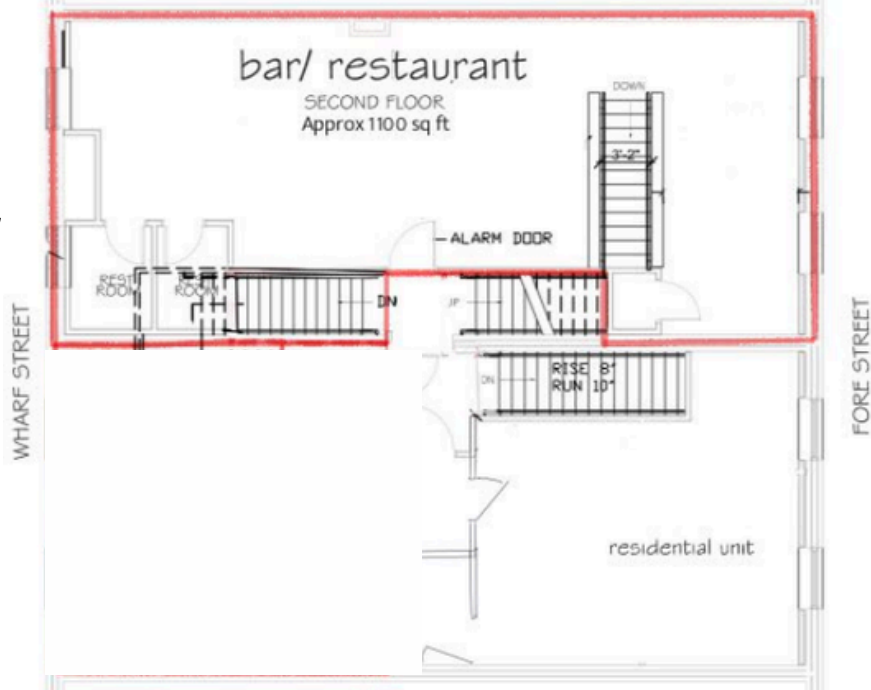
<b>Owner</b>	416 FORE STREET HOLDINGS, LLC
<b>Suite Size</b>	2,200 ± SF
<b>Utilities</b>	Municipal water/sewer, Natural Gas, Electric
<b>HVAC</b>	Hot water baseboard heat
<b>Parking</b>	On street, garage across the street
<b>Floor Plan</b>	Traditional bar lay out
<b>Signage</b>	Building Mounted/ Awning
<b>Zoning</b>	B3 DEOZ
<b>Lease Rate</b>	\$50.00/SF MG



## First Floor



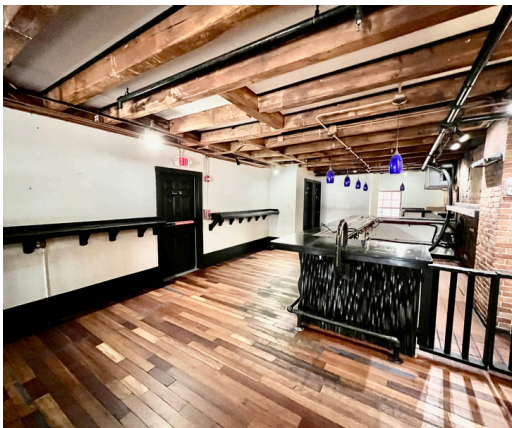
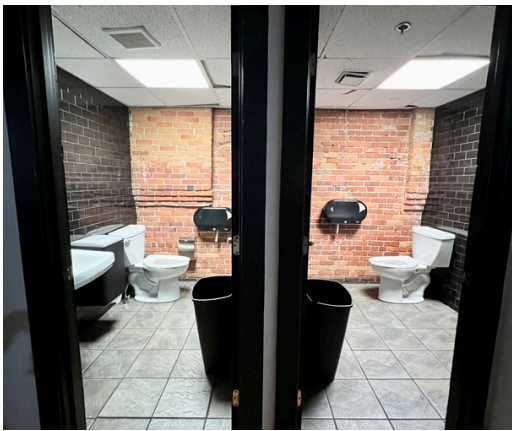
## Second Floor

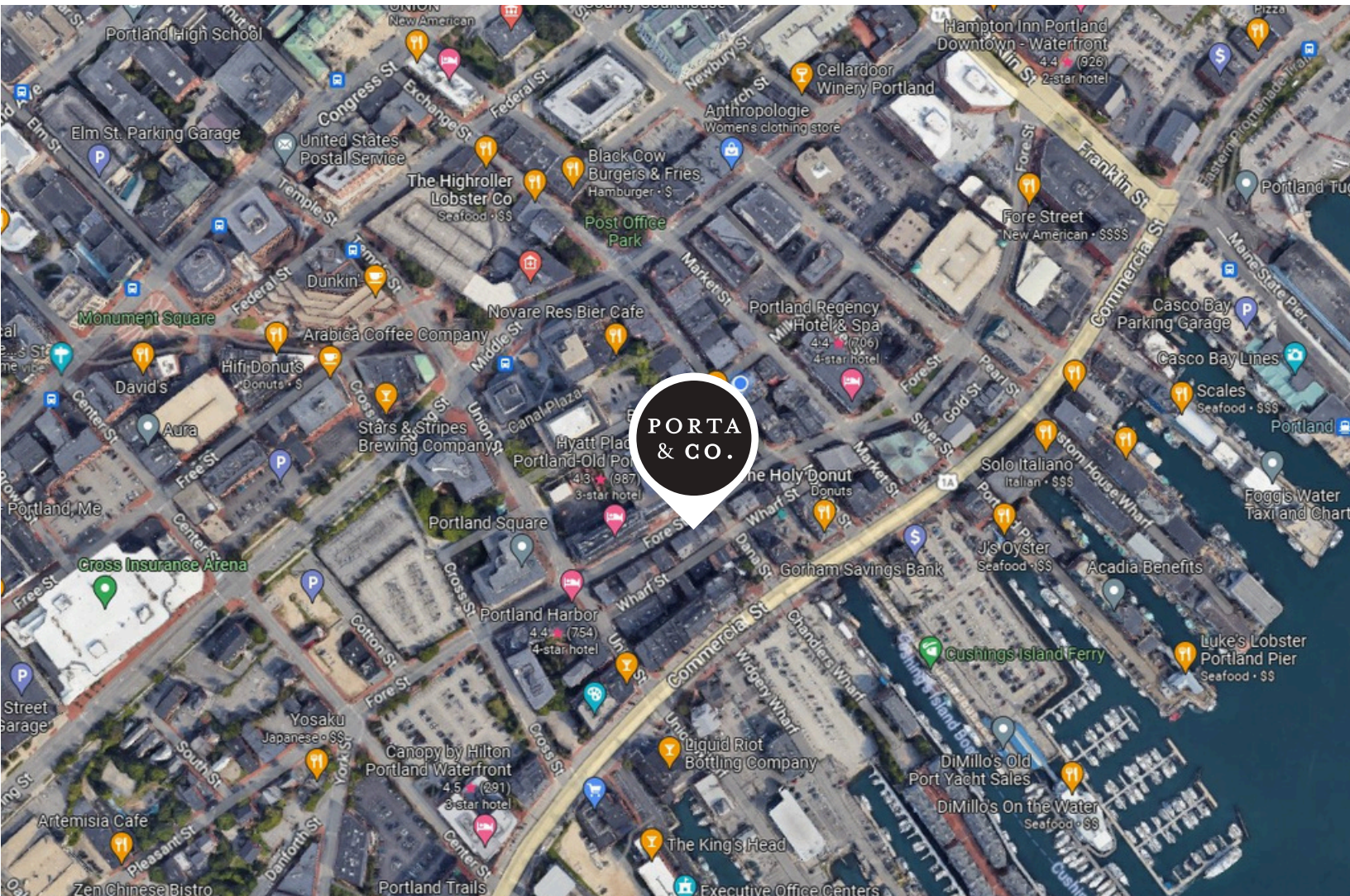


PORTA  
& CO.

# Property Photos

420 Fore Street | Portland, ME





## CONTACT



**Mackenzie Simpson**

Broker

C: 207-310-0221

O: 207-558-0885

[msimpson@portacompany.com](mailto:msimpson@portacompany.com)

This information has been obtained from sources believed reliable and is intended for informational use only. The information contained herein has not been verified for accuracy or completeness. It is recommended that prospective tenants and buyers conduct their own inspection of the property and verify all information. Any reliance on this information is solely at your own risk. Photos herein are the property of their respective owners. Use of these images without the express written consent of the owner is prohibited.

**PORTA & CO.**

COMMERCIAL REAL ESTATE

30 Milk Street, Second Floor  
Portland, ME 04101

207-747-1515

[www.portacompany.com](http://www.portacompany.com)