



WICKFIELD

COMMERCIAL REAL ESTATE



4,529 - 18,124 SF of Office Space

111 N Ashley,
Ann Arbor

www.wickfieldcre.com

111 N Ashley St.



PROPERTY DETAILS

- Excellent Location with Panoramic Views of Downtown Ann Arbor
- Move-in Ready
- Flexible Floor Plans with Build to Suit Opportunity
- Large Windows Providing Natural Light
- Walkable to Nearby Restaurants, Cafés, and Retail
- On-Site Parking
- Locally Owned & Managed



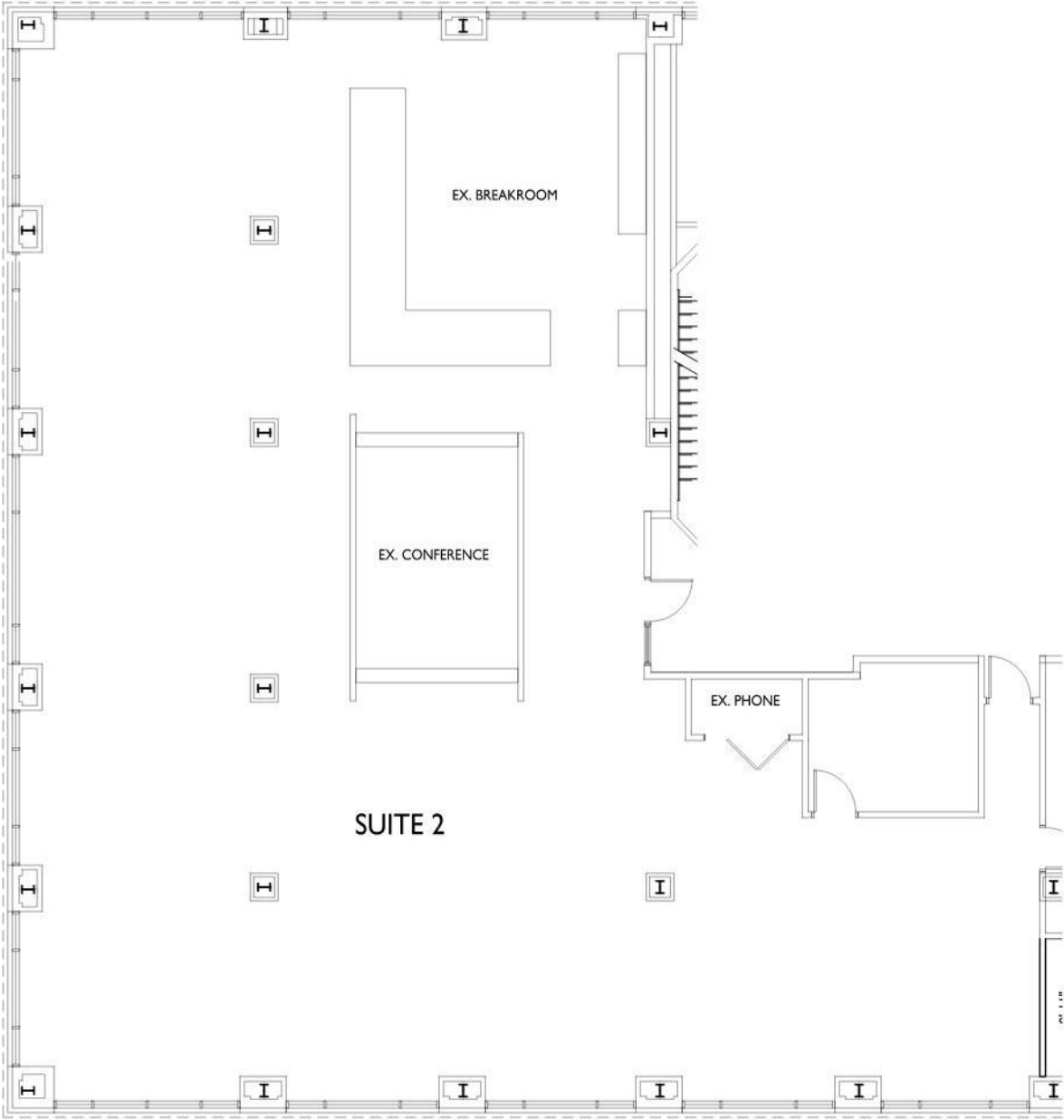
4,529 SF - 18,124 SF

Starting Base Rental Rate: \$30/SF

Type: Modified Gross



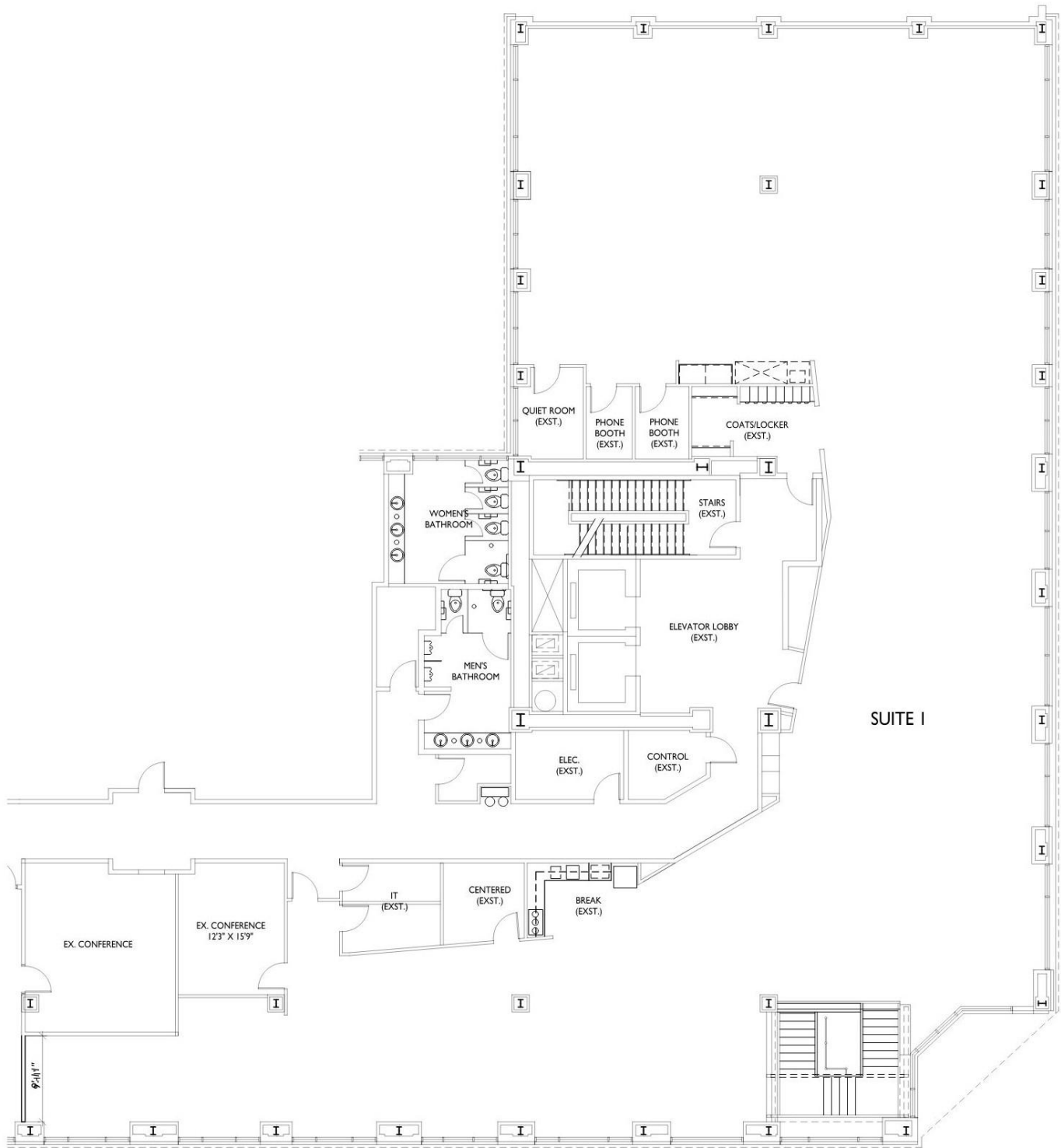
Suite 200 A - 4,529 SF



SUITE 2 FLOOR PLAN

SCALE: 1/8" = 1'-0"

Suite 200 B - 9,101 SF



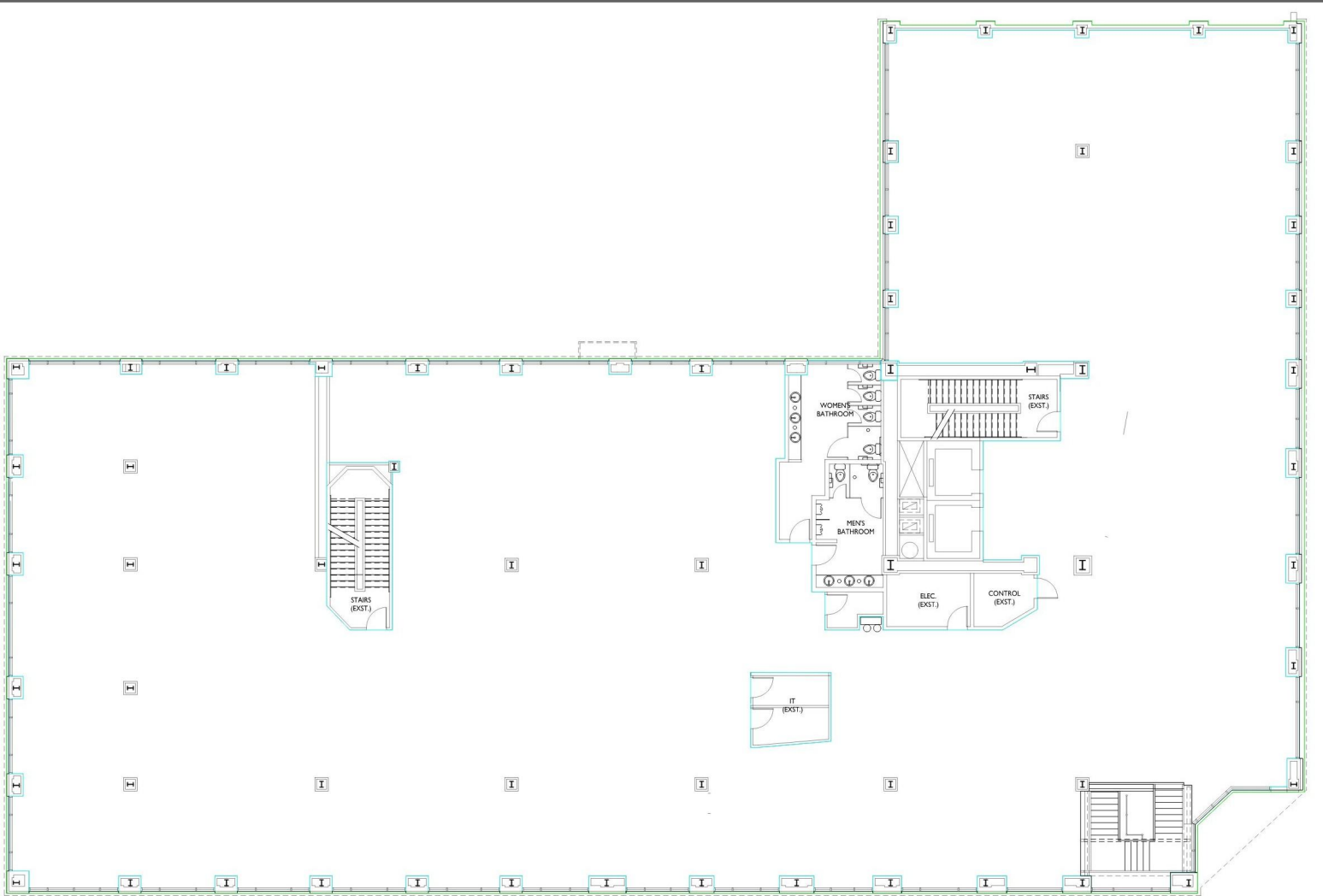
SUITE I FLOOR PLAN

SCALE: 1/8" = 1'-0"

Suite 200 - 13,630 SF



Entire 2nd Floor - 18,124 SF

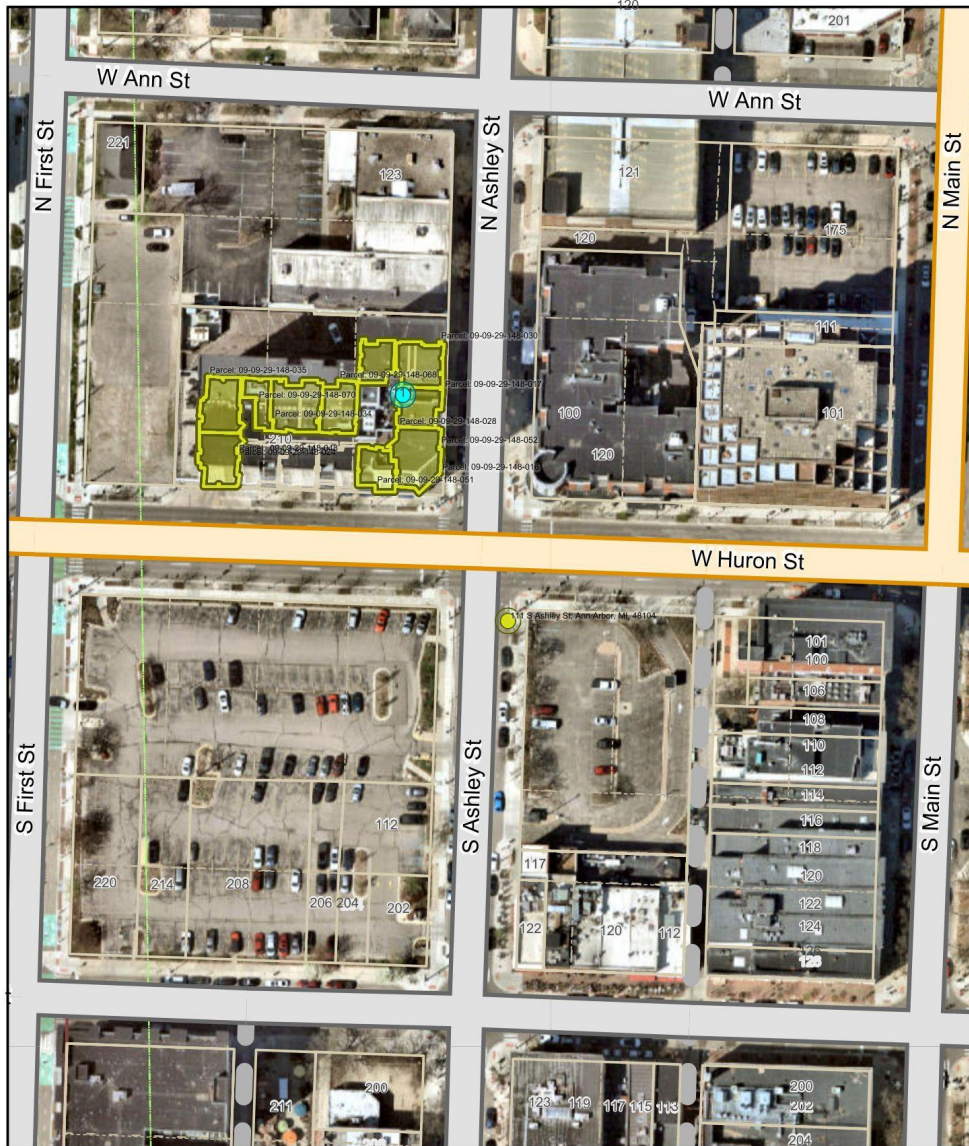




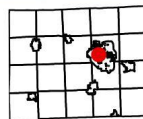
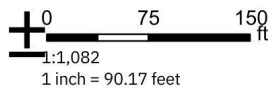
WICKFIELD

COMMERCIAL REAL ESTATE

LOCATION



111 N Ashley



Created 10/1/2025



This is user-generated output from a Washitena County mapping application and is for reference only. Data layers that appear on this map may or may not be accurate, current, or otherwise reliable. Parcels may not be to scale and should not be construed as a "survey description." Conclusions drawn from such information are solely the responsibility of the user. Any assumption of legal status of this data is hereby disclaimed.

Eric Rudland, Director of CRE
517-812-0628 / erudland@wickfieldproperties.com

www.wickfieldcre.com