



**CUSHMAN &
WAKEFIELD**

Iowa Commercial Advisors

2520

**SE ENCOMPASS DR
WAUKEE, IA**

CLASS A OFFICE SPACE FOR LEASE

Drone Footage

[Click Here](#)



AVAILABILITY

2520 SE Encompass Dr, Waukee, IA

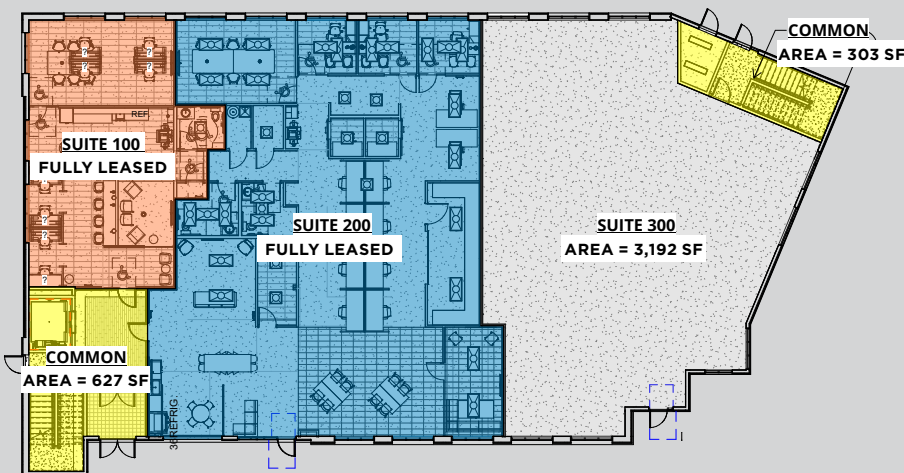
Position your business for success in one of Waukee's premier Class A office buildings. 2520 SE Encompass Drive is a modern, high-end workspace designed to foster innovation, collaboration, and accessibility. This newly constructed building (2020) features premium finishes and a strong anchor tenant, Myriad Advisor Solutions, occupying the second floor. There are currently three suites available on the first floor:

- Suite 100 - Fully Leased
- Suite 200 - Fully Leased
- Suite 300 - 3,192 SF - Unfinished space; customizable to fit tenant needs

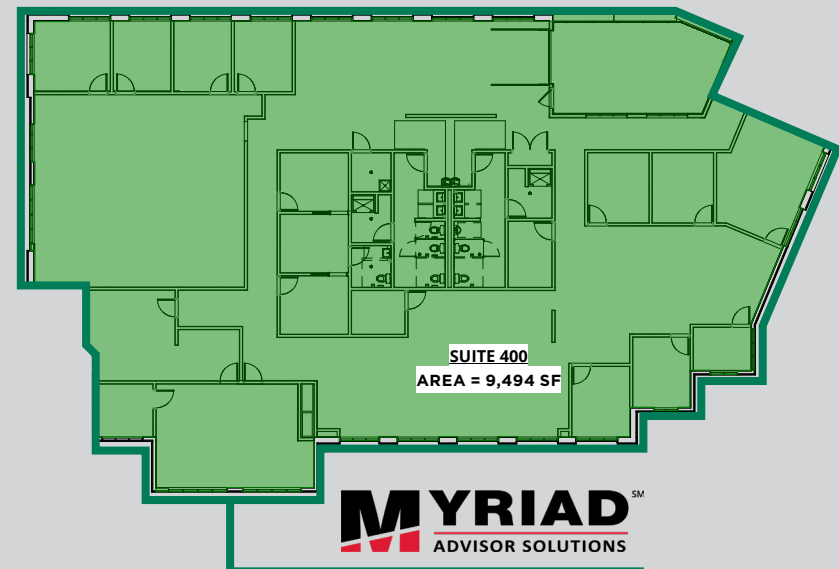
FIRST FLOOR:	3,192 SF
SECOND FLOOR:	LEASED
POSSESSION:	IMMEDIATE
TERM:	5-10 YEARS
LEASE TYPE:	TRIPLE NET
ASKING RENT:	\$22.00 PSF

Property is also for sale – Inquire with our brokerage team for details.

First Floor Availability



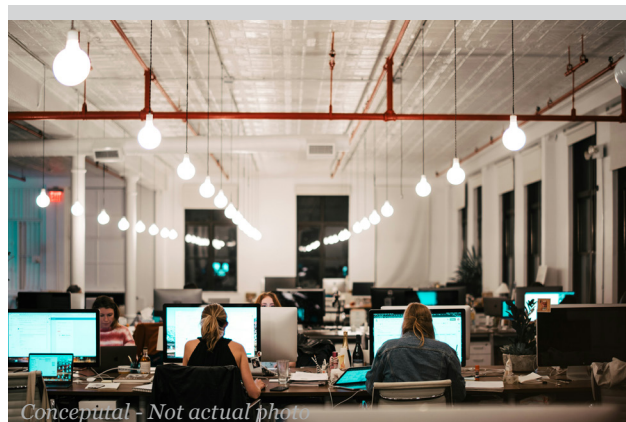
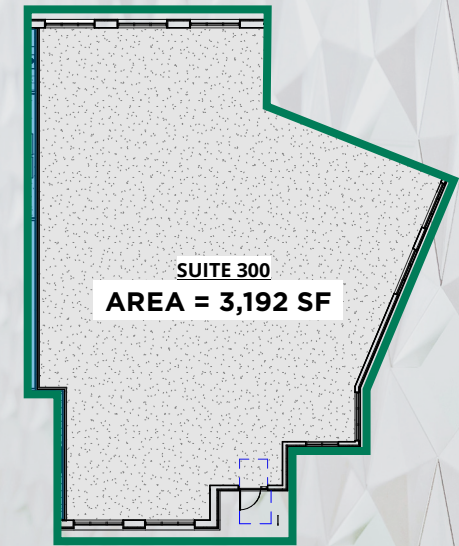
Second Floor - Fully Leased



AVAILABILITY

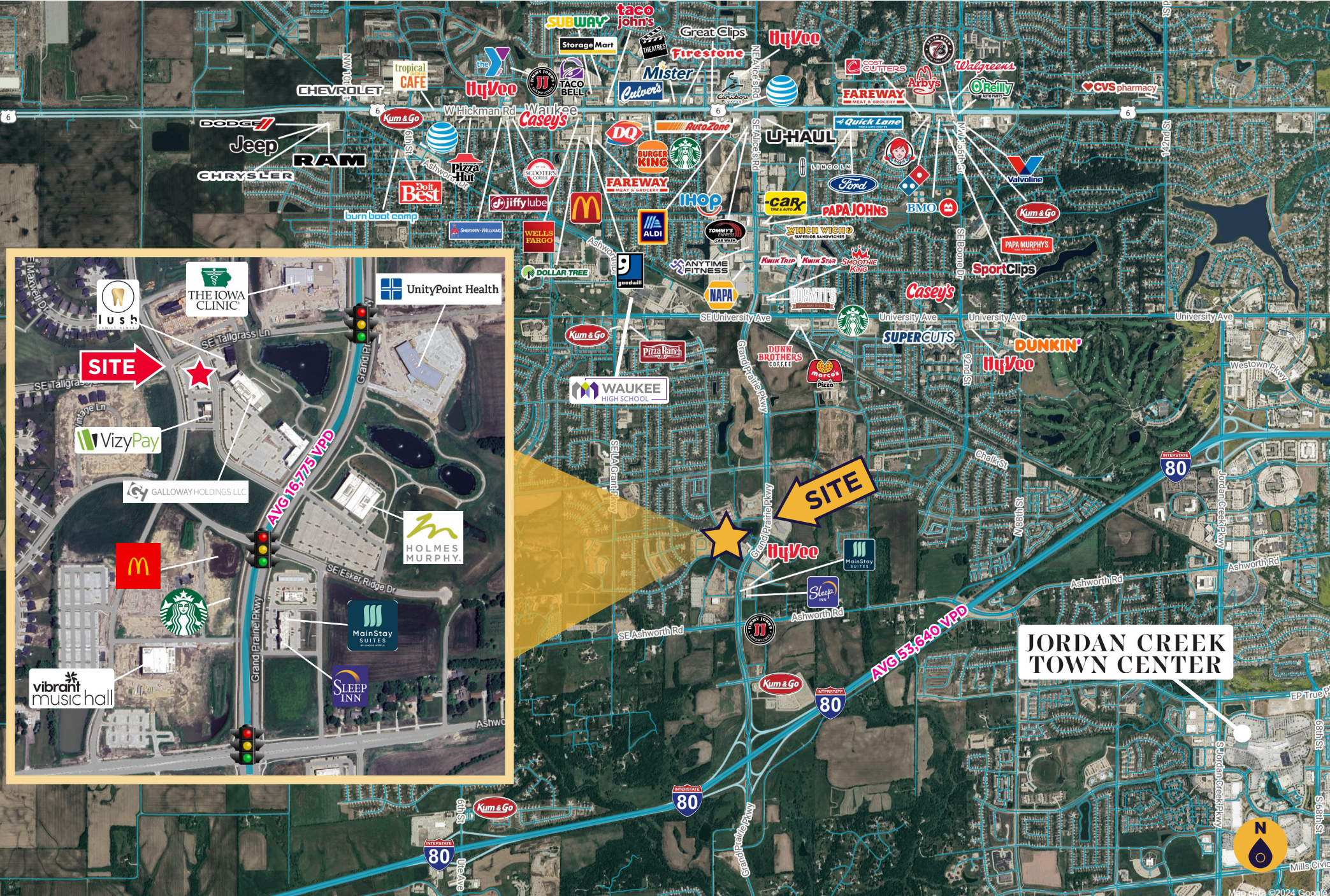
Suite 300 - 3,192 SF

Transform this expansive 3,192square feet of unfinished space into the perfect environment for your business. Suite 300 offers two private entrances and endless possibilities for customization, allowing you to design a layout that truly fits your unique needs. Whether you're looking for open-concept offices, a specialized workspace, or a tailored retail environment, this suite is ready to be reimagined.





LOCATION



WAUKEE, IA

Thriving Business Ecosystem

Surrounded by professional service firms, tech companies, and healthcare providers, creating natural business synergies.

Unmatched Accessibility

Quick access to I-80 & I-35, ensuring a seamless commute for employees and clients.

Work-Life Balance

Close to Waukee's growing entertainment, dining, and retail options, including KeeTown Loop, The Palms Theatres & IMAX, and All Iowa Attack, a premier fitness and training facility.

Growing Community

Waukee's highly rated school district and strong community infrastructure make it an attractive place for businesses and employees alike.

The City of Waukee is recognized as the fastest-growing (large) city in Iowa and is located in Dallas County—the fourth fastest growing county in the U.S. Waukee offers a friendly, community-oriented vibe featuring quality schools, parks, trails, entertainment and enrichment opportunities. The City is also dedicated to economic development and business opportunities, including the expansion of both the mixed-use development Kettlestone and the highly traveled Hickman Road corridor.

WAUKEE DISTINCTIONS

Top 10 Fastest-Growing U.S. Suburbs, Realtor.com

Top 50 Best Places to Live in America, "Money Magazine"

Top 10 Best Towns for Families, "FamilyCircle"

Top 50 Best Suburbs in America, BusinessInsider.com

Top 10 Safest Places in Iowa, Moveto.com

Best City in Iowa for Home Ownership, NerdWallet.com

Best Local Community to Live In, "Cityview"



2520
SE ENCOMPASS DR
WAUKEE, IA

CONTACT

Brandon Fitz
Senior Associate
+1 319 400 0202
bfitz@iowaca.com

Jordan Bouslog
Vice President
+1 515 402 9131
jbouslog@iowaca.com

Mark E. Timmins, J.D.
Vice President
+1 515 988 2765
mtimmins@iowaca.com

©2025 Cushman & Wakefield. All rights reserved. The information contained in this communication is strictly confidential. This information has been obtained from sources believed to be reliable but has not been verified. NO WARRANTY OR REPRESENTATION, EXPRESS OR IMPLIED, IS MADE AS TO THE CONDITION OF THE PROPERTY (OR PROPERTIES) REFERENCED HEREIN OR AS TO THE ACCURACY OR COMPLETENESS OF THE INFORMATION CONTAINED HEREIN, AND SAME IS SUBMITTED SUBJECT TO ERRORS, OMISSIONS, CHANGE OF PRICE, RENTAL OR OTHER CONDITIONS, WITHDRAWAL WITHOUT NOTICE, AND TO ANY SPECIAL LISTING CONDITIONS IMPOSED BY THE PROPERTY OWNER(S). ANY PROJECTIONS, OPINIONS OR ESTIMATES ARE SUBJECT TO UNCERTAINTY AND DO NOT SIGNIFY CURRENT OR FUTURE PROPERTY PERFORMANCE.

 **CUSHMAN &
WAKEFIELD**
Iowa Commercial Advisors

