

140 Mendel Drive SW

ATLANTA, GA 30336

31,310 sq. ft.
AVAILABLE

5 total
DOCK DOORS

3,664 sq. ft.
OFFICE AREA

2 total
DRIVE IN DOORS

19'
CLEAR HEIGHT

200' (cross-dock)
BUILDING DEPTH

Features

A 31,310 sq. ft. stand-alone building area situated on a 2.96 AC lot.

Available Now

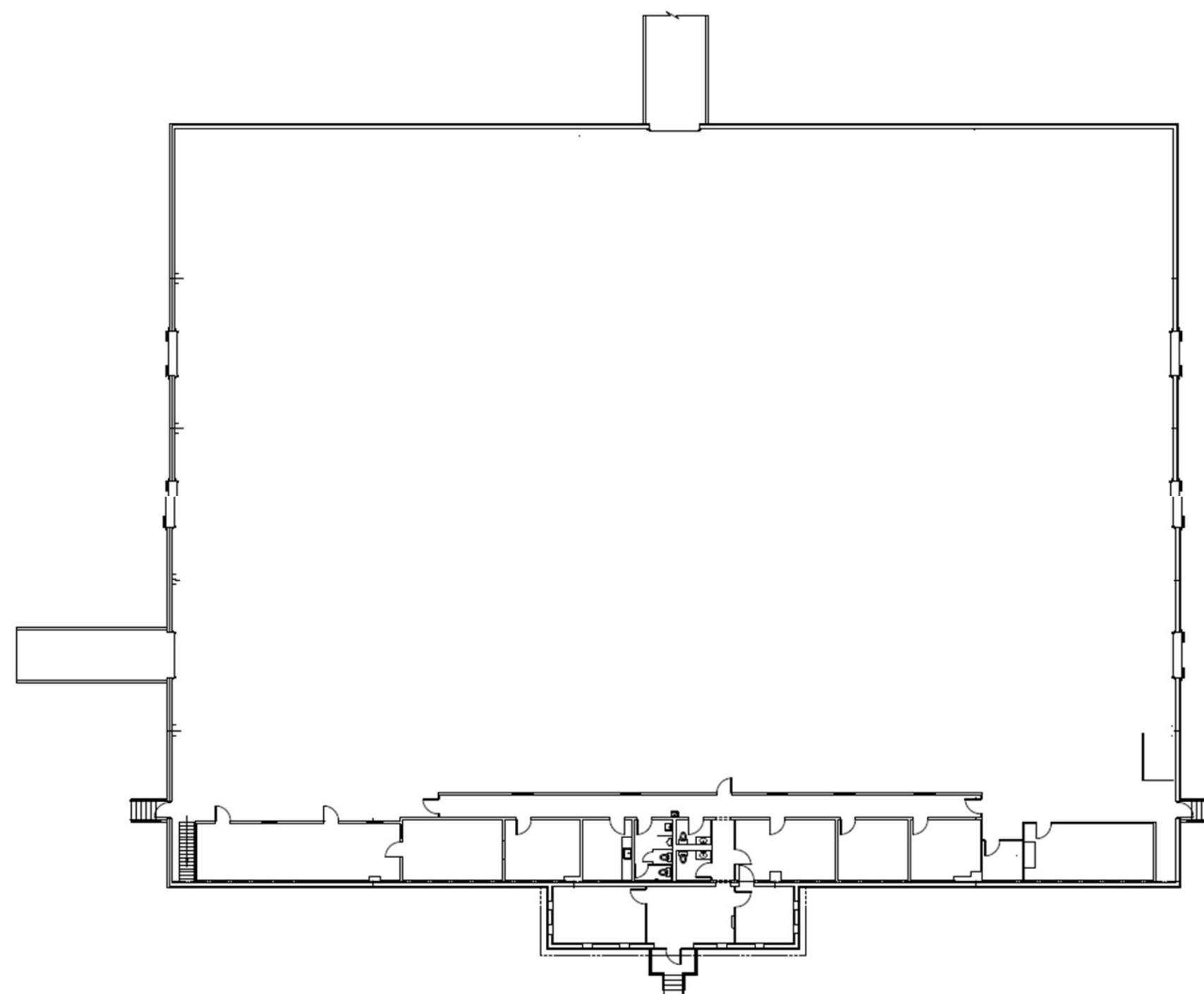
Efficient loading with 5 dock-high doors and 2 drive-in doors.

Close access to major interstates such as I-285 & I-20.



Building Specifications


Building Size	31,310 sq. ft.
Available	31,310 sq. ft.
Office Space	3,664 sq. ft.
Clear Height	19'
Dock High Doors	5 (2-edge of dock levelers)
Column Spacing	30' x 40'
Drive-In Doors	2
Power	700 Amps, 480 Volt, 3 Phase
Building Depth	200' (cross-dock)
Zoning	M-2 Industrial (Heavy Industrial)
Lighting	LED
Parking	±25 auto spaces
Comments:	<ul style="list-style-type: none"> • Whitebox warehouse space • New paint & carpet in office • New LED's in office/warehouse • 2018 TPO roof - 20 year warranty • ±0.25 AC outside storage



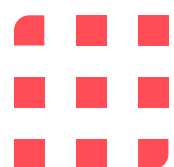
 **±25**
Automobile
Parking

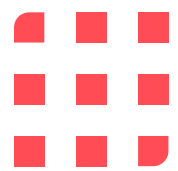
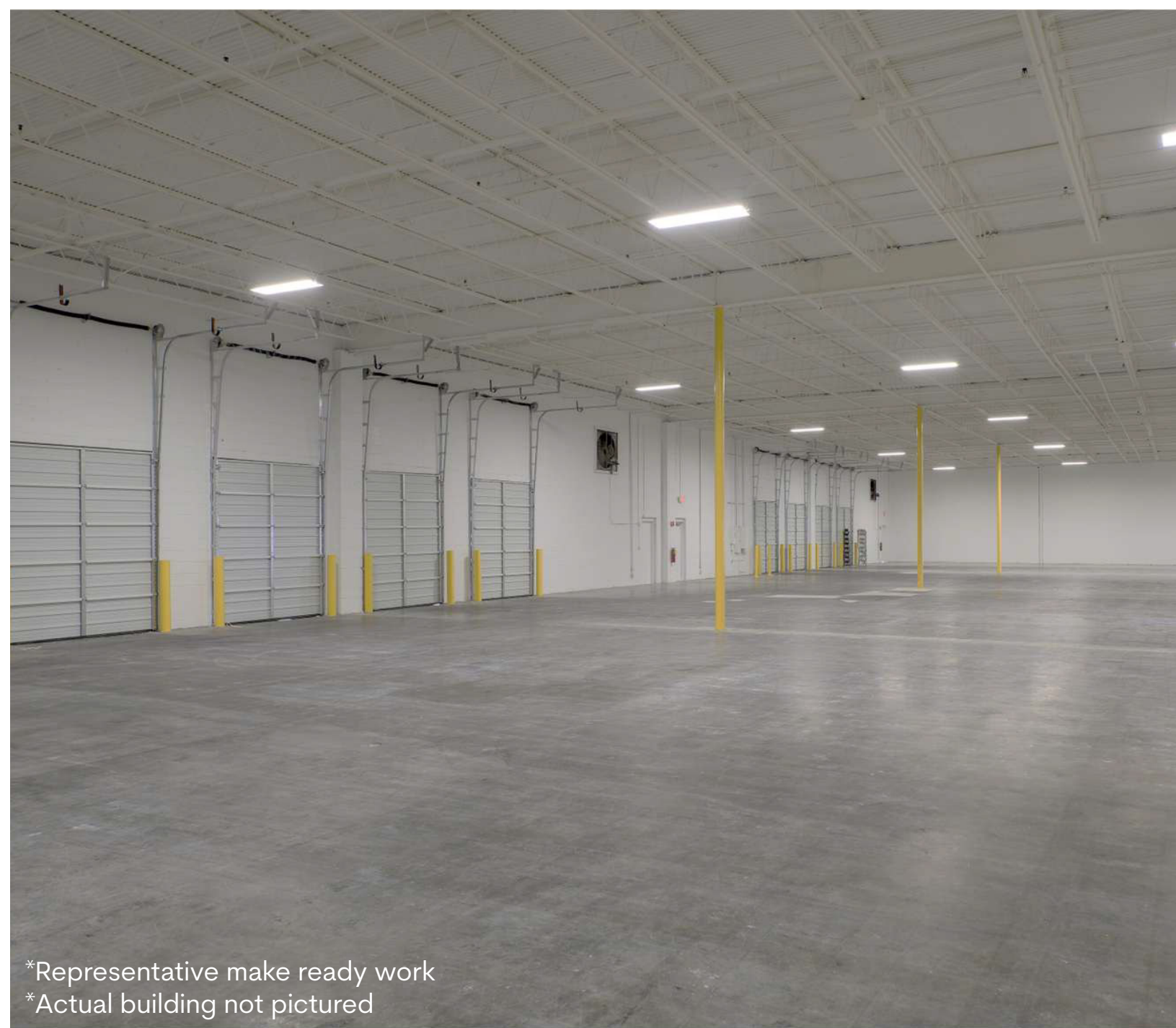
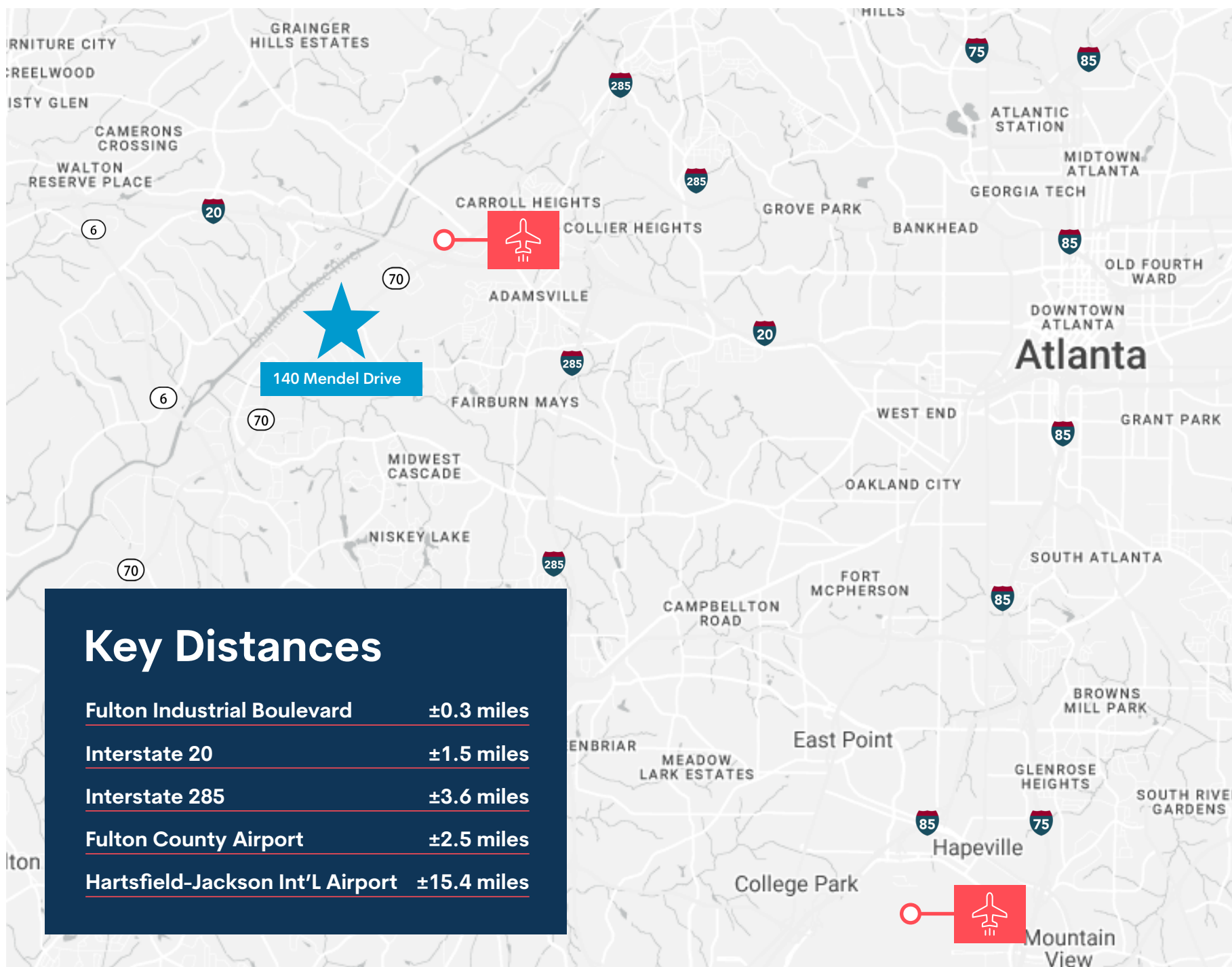
 **5**
Loading
Docks

 **19'**
Min. Clear
Height

 **2**
Drive In Doors
(9' x 10') (10' x 10')

 **200'**
Building
Depth





140 Mendel Drive SW

ATLANTA, GA 30336



Leasing Contacts

CONNOR WINKLER, SIOR

O: 404.442.2803

C: 318.393.8248

cwinkler@lee-associates.com

BOBBY LITTMAN

O: 404.442.2894

C: 720.999.5734

blittman@lee-associates.com



Brookfield Properties

Celeste Land

404.418.4168

celeste.land@brookfieldproperties.com

