

FOR LEASE

**9,746
SQ.FT.**
**Premier
Northwest
Location**
**BROOKHOLLOW WEST
BUSINESS PARK**

9777 W. Gulf Bank Road | Suite 600 | Houston, TX 77040

SPACE FEATURES

- 9,746 SF Total
- 5,112 SF Office | 4,634 SF Warehouse
- One (1) dock-high loading door
- 18' Clear height
- 100% Climate controlled
- Front-park / Rear-load configuration
- Excellent access to Highway 290 and Beltway 8
- Located outside the City of Houston in Harris County
- Professionally managed by responsive, hands-on ownership



CONTACT US **Craig Bean**
P: 713.490.3784
E: Craig.Bean@transwestern.com

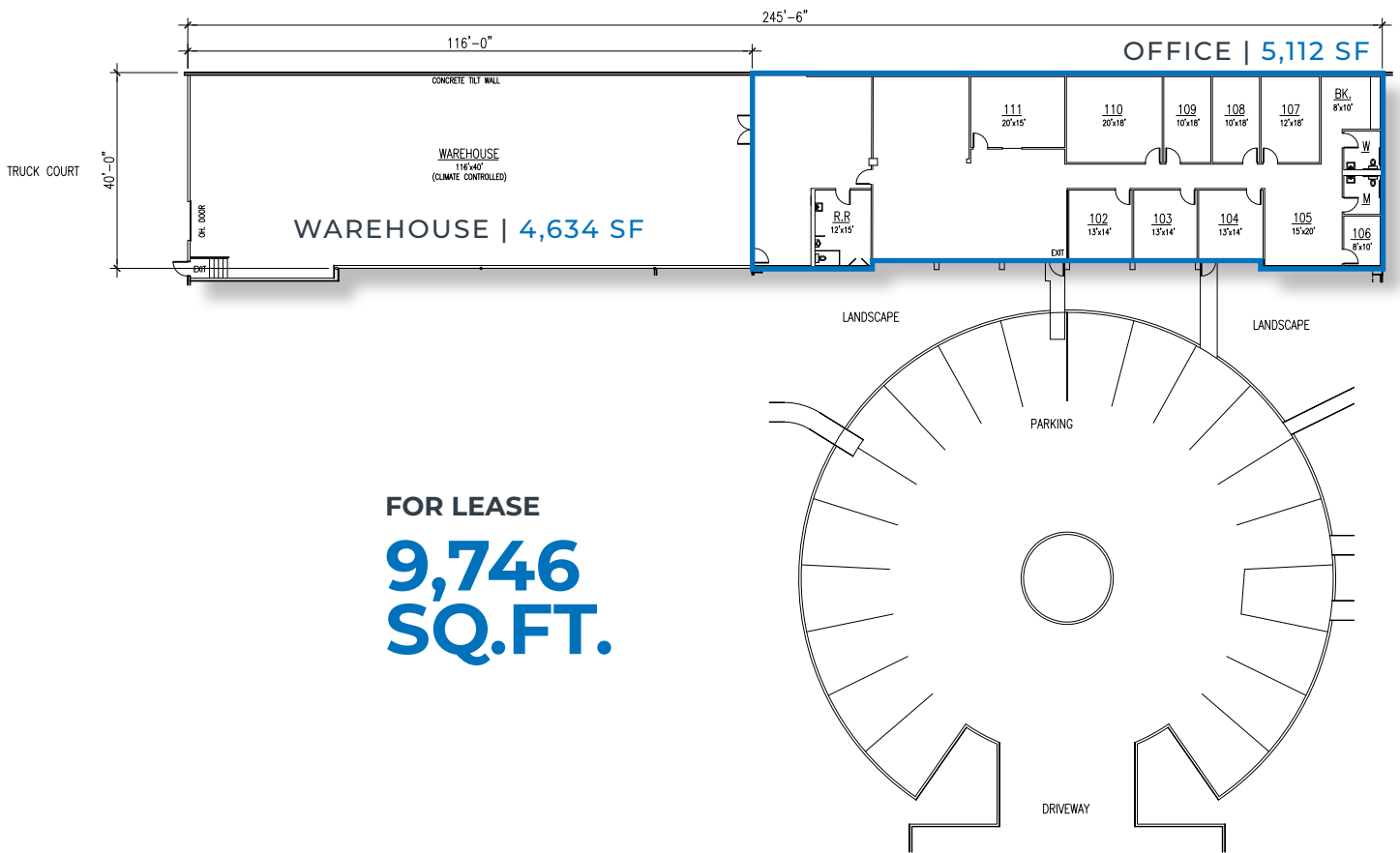
Matthew Morrison
P: 713.270.3350
E: Matthew.Morrison@transwestern.com

Carter Jones
P: 713.401.5190
E: Carter.Jones@transwestern.com

The information provided herein was obtained from sources believed reliable; however, Transwestern makes no guarantees, warranties or representations as to the completeness or accuracy thereof. The presentation of this property is submitted subject to errors, omissions, change of price or conditions, prior sale or lease, or withdrawal without notice. Copyright © 2023 Transwestern.

9777 W. Gulf Bank Road | Suite 600 | Houston, TX 77040

BROOKHOLLOW WEST BUSINESS PARK



FOR LEASE
9,746
SQ.FT.

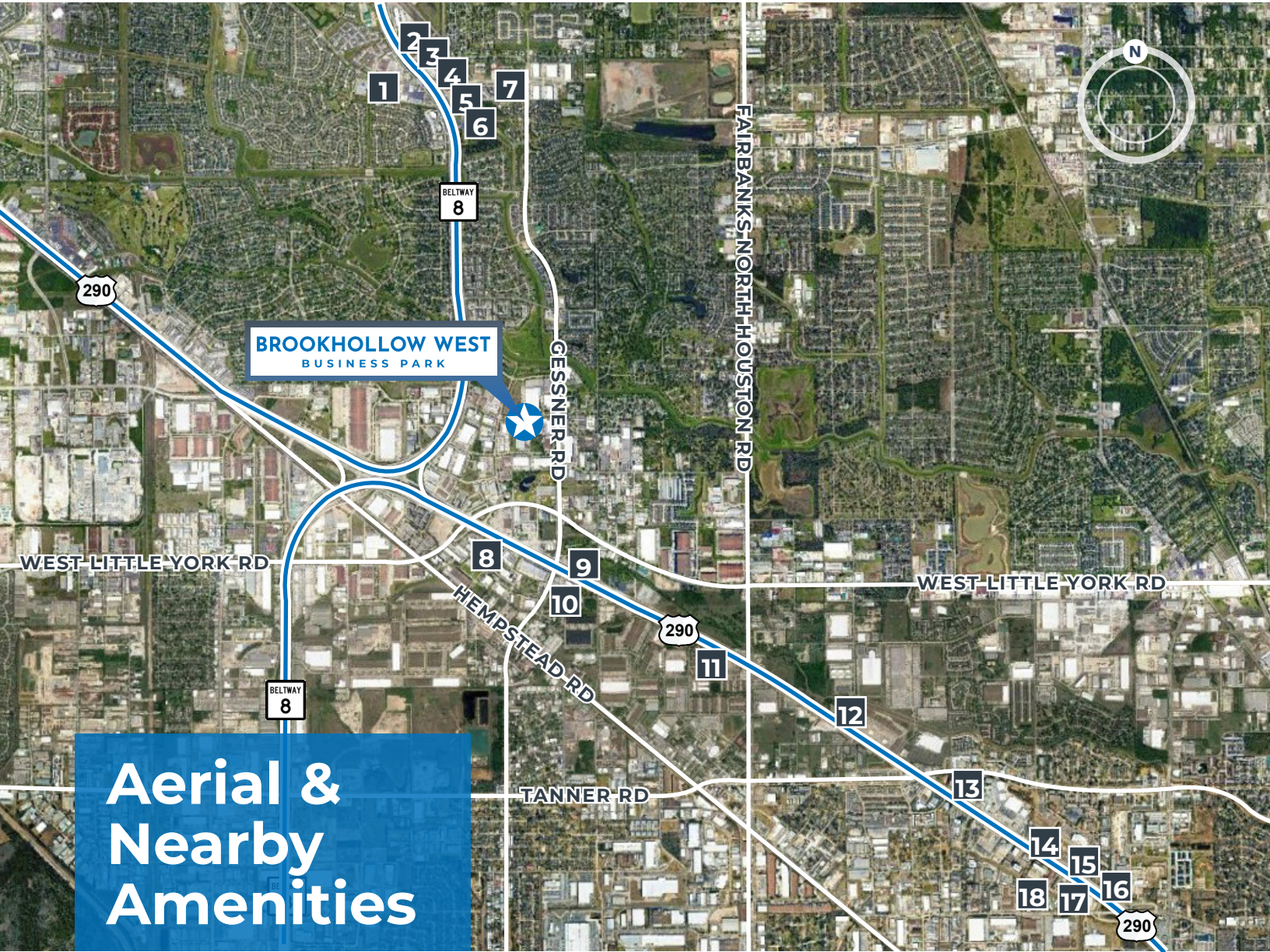
CONTACT US **Craig Bean**
P: 713.490.3784
E: Craig.Bean@transwestern.com

Matthew Morrison
P: 713.270.3350
E: Matthew.Morrison@transwestern.com

Carter Jones
P: 713.401.5190
E: Carter.Jones@transwestern.com

The information provided herein was obtained from sources believed reliable; however, Transwestern makes no guarantees, warranties or representations as to the completeness or accuracy thereof. The presentation of this property is submitted subject to errors, omissions, change of price or conditions, prior sale or lease, or withdrawal without notice. Copyright © 2023 Transwestern.

9777 W. Gulf Bank Road | Suite 600 | Houston, TX 77040



- | | | | | | | | | |
|---------------|---------------|---------------|---------------|---------------|---------------|---------------|---------------|---------------|
| 1
 | 2
 | 3
 | 4
 | 5
 | 6
 | 7
 | 8
 | 9
 |
| 10
 | 11
 | 12
 | 13
 | 14
 | 15
 | 16
 | 17
 | 18
 |

CONTACT US	<p>Craig Bean P: 713.490.3784 E: Craig.Bean@transwestern.com</p>	<p>Matthew Morrison P: 713.270.3350 E: Matthew.Morrison@transwestern.com</p>	<p>Carter Jones P: 713.401.5190 E: Carter.Jones@transwestern.com</p>
-------------------	--	--	--

The information provided herein was obtained from sources believed reliable; however, Transwestern makes no guarantees, warranties or representations as to the completeness or accuracy thereof. The presentation of this property is submitted subject to errors, omissions, change of price or conditions, prior sale or lease, or withdrawal without notice. Copyright © 2023 Transwestern.